



CI-0704

TAB 7: TECHNICAL DISCIPLINES
Communications

FIGURE: PRESTO SYSTEM ARCHITECTURE – P2

SECTION:
Tab 7:
Technical
Disciplines

FIGURE:
Presto
System
Architecture
– P2

REFERENCE NOTES (CONTINUE):

- .6 120V, 5A CIRCUIT IN CONDUIT TO SFTP/CQD/FIBER TRANSCEIVER BY ELECTRICAL TRADE. EACH DEDICATED 120V, 5A CIRCUIT FROM UPS-2 TO FEED MAXIMUM 4 DEVICES.
- .7 CAT6 DATA CABLE IN CONDUIT BY ELECTRICAL TRADE.
- .8 6-STRAND MULTI-MODE FIBER OPTIC CABLE BY ELECTRICAL TRADE.
- .9 CAT6 PATCH CORDS BY ELECTRICAL TRADE.
- .10 MULTI-MODE FIBER OPTIC PATCH CORDS TERMINATED WITH LC CONNECTOR AT SWITCH; PROVIDED BY ELECTRICAL TRADE.
- .11 FIBER TRANSCEIVER TO SERVE DEVICES AT DISTANCES EXCEEDING 90m; SUPPLIED, INSTALLED AND CONNECTED BY PRESTO SUPPLIER. SEE DIAGRAM P5.
- .12 TRANSCEIVER ENCLOSURE BY ELECTRICAL TRADE. SEE DIAGRAM P5.
- .13 POWER JUNCTION BOX WITH FUSE HOLDER TERMINAL BLOCKS AND 5 AMP FAST BLOW FUSE FOR EACH CIRCUIT IN COMMUNICATION ROOM TO TERMINATE POWER WIRING AT CC RACK LOCATION; PROVIDED BY ELECTRICAL TRADE. SEE DIAGRAM P3.
- .14 DATA JUNCTION BOX IN COMMUNICATION ROOM TO TERMINATE DATA WIRING AT CC RACK LOCATION; PROVIDED BY ELECTRICAL TRADE. SEE DIAGRAM P4.
- .15 FIBER OPTIC DISTRIBUTION PANEL IN CC RACK BY ELECTRICAL TRADE.
- .16 CAT6 PATCH PANEL IN CC RACK BY ELECTRICAL TRADE.
- .17 SWITCH IN CC RACK; SUPPLIED, INSTALLED AND CONNECTED BY PRESTO SUPPLIER.
- .18 UPS-1 IN CC RACK TO PROTECT PRESTO NETWORK EQUIPMENT; SUPPLIED, INSTALLED AND CONNECTED BY PRESTO SUPPLIER.
- .19 UPS-2 IN CC RACK TO PROTECT THE PRODUCTION PRESTO DEVICES; SUPPLIED, INSTALLED AND CONNECTED BY PRESTO SUPPLIER.
- .20 NEMA 5-15R RECEPTACLE (WITH DEDICATED 120V, 15A CCT FROM NORMAL POWER); PROVIDED BY ELECTRICAL TRADE.
- .21 120V RECEPTACLE WITH DEDICATED CIRCUIT FROM NORMAL POWER BY ELECTRICAL TRADE. RECEPTACLE TO BE:
NEMA 5-15R (WITH DEDICATED 120V, 15A CCT.) AT RAIL STATIONS AND BUS TERMINALS.
NEMA L5-30R (WITH DEDICATED 120V, 30A CCT.) AT BUS DEPOTS WHEN A "WLAN" SOLUTION IS DEPLOYED.
NEMA L6-20R (WITH DEDICATED 2P, 208V, 20A CCT.) AT BUS DEPOTS AND ENFORCEMENT OFFICES THAT HAVE SERVER.
- .22 FLOOR/WALL MOUNTED RACK TO HOUSE CONCENTRATOR COMPLEX (CC); SUPPLIED AND INSTALLED BY ELECTRICAL TRADE.
- .23 DISCONNECT SWITCH IN TRANSCEIVER ENCLOSURE BY ELECTRICAL TRADE. "OFF" POSITION TO BE LABELED CLEARLY ON SWITCH.
- .24 SOW SERVICE CORD C/W COMMERCIAL SPECIFICATION GRADE PLUG TO FEED PRESTO DEVICES FROM UPS-2; BY ELECTRICAL TRADE.

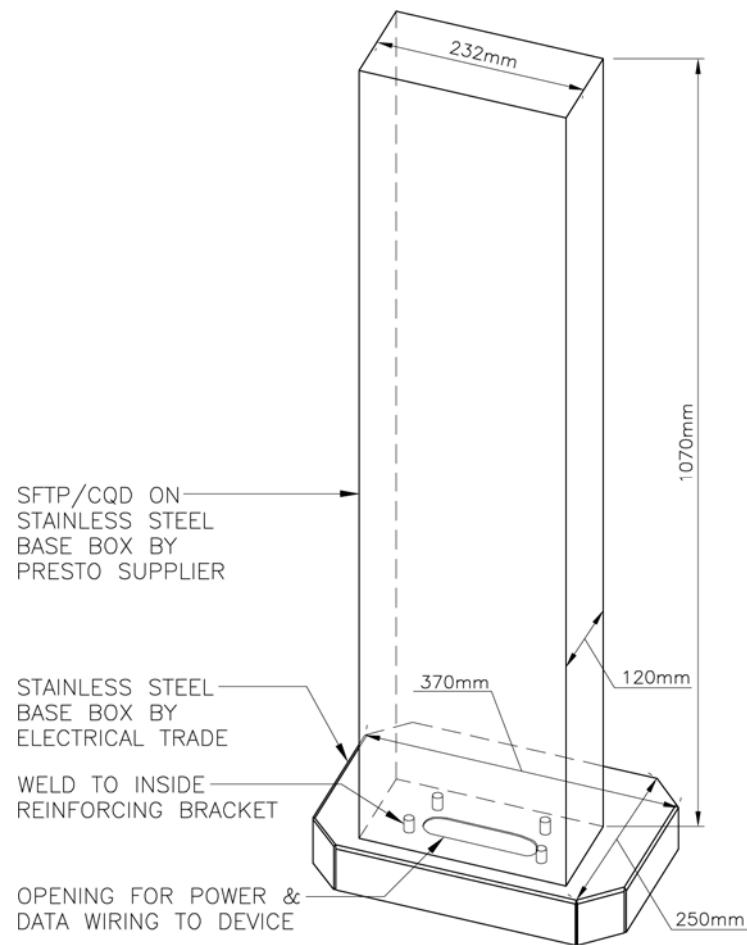


CI-0704

TAB 7: TECHNICAL DISCIPLINES
Communications

FIGURE: DETAIL – SFTP/CQD ON BASE BOX FRONT VIEW (CUSTOMER FACING)- P9

SECTION:
Tab 7: Technical
Disciplines



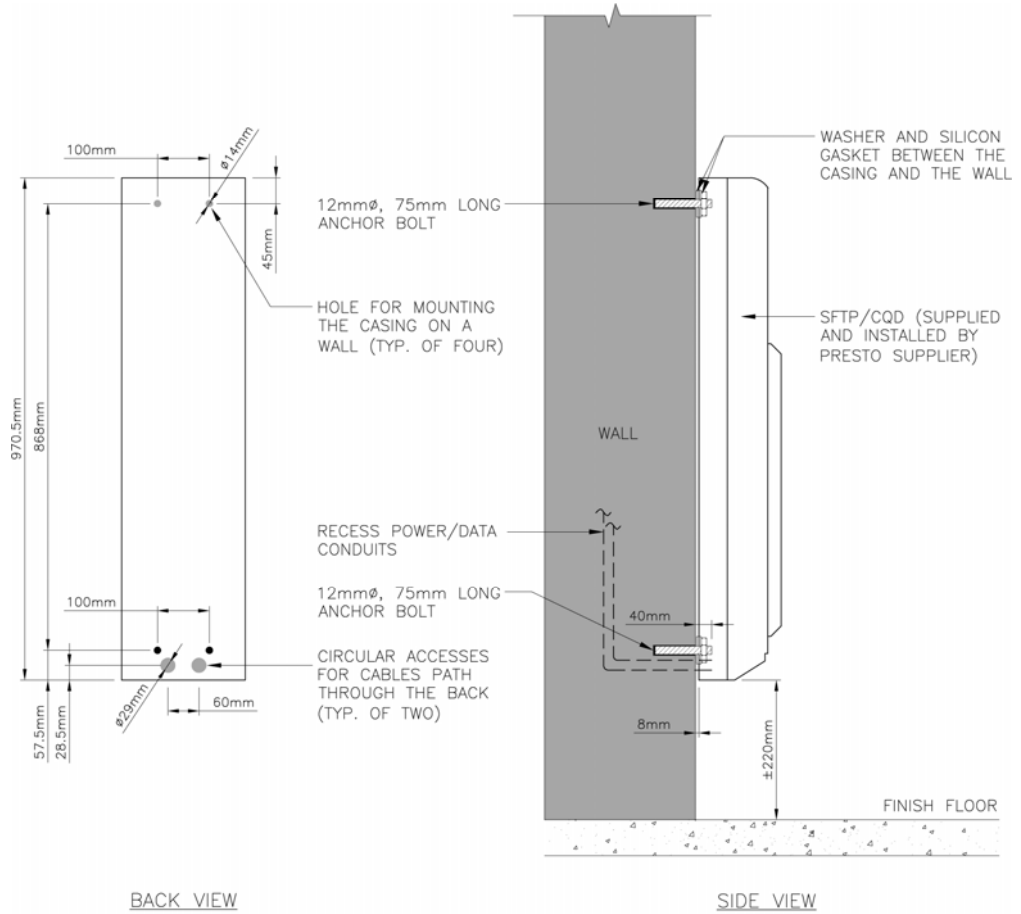


CI-0704

TAB 7: TECHNICAL DISCIPLINES
Communications

FIGURE: DETAIL – BACK ENTRY WALL MOUNTED CQD/SFTP INSTALLATION DETAIL -P10

SECTION:
Tab 7:
Technical
Disciplines



NOTES:

1. COIL 1m POWER WIRING AND DATA WIRING. FINAL CONNECTION BY DEVICE SUPPLIER. DATA CABLES (CAT6) TO BE PROVIDED WITH RJ-45 CONNECTOR.
2. PROVIDE TEMPORARY BOXES AT EACH DEVICE LOCATION TO PROTECT COILED-UP WIRING. COIL 1m POWER WIRING AND DATA WIRING. FINAL CONNECTION BY DEVICE SUPPLIER. DATA CABLES (CAT6) TO BE PROVIDED WITH RJ-45 CONNECTOR.