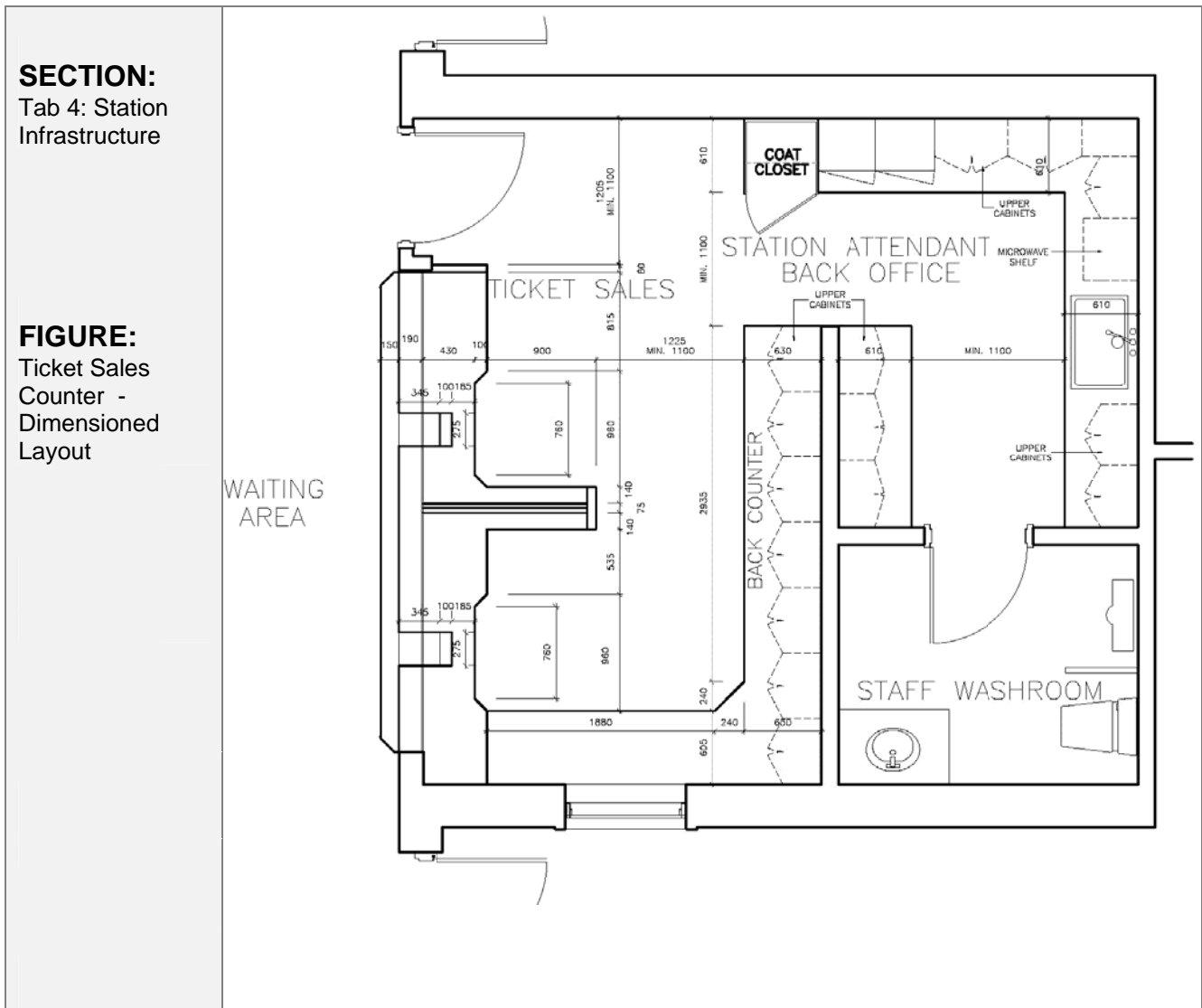




CI-0401

TAB 4: STATION INFRASTRUCTURE
Station Buildings

FIGURE: TICKET SALES COUNTER – DIMENSIONED LAYOUT

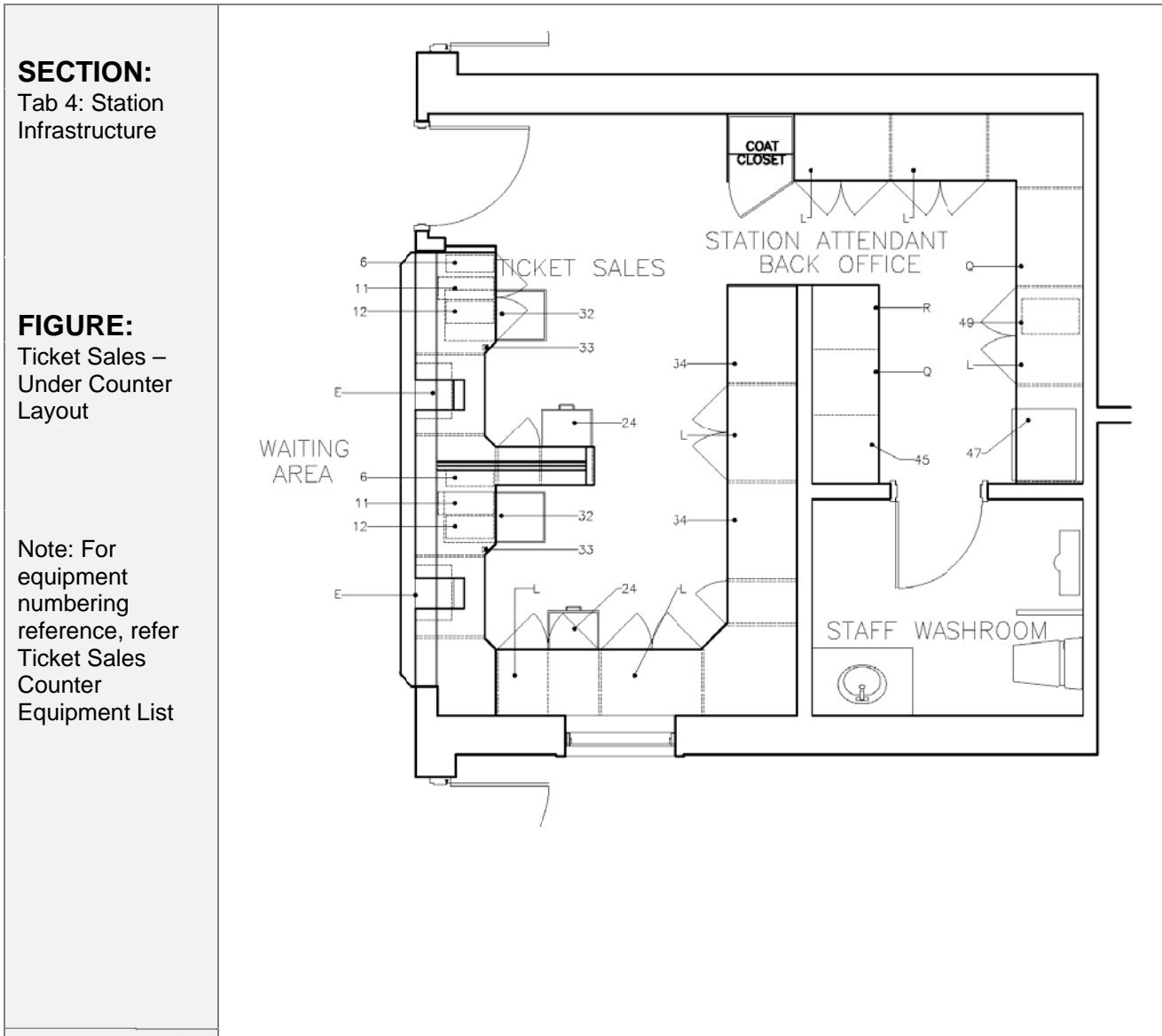




CI-0401

TAB 4: STATION INFRASTRUCTURE
Station Buildings

FIGURE: TICKET SALES – UNDER COUNTER LAYOUT

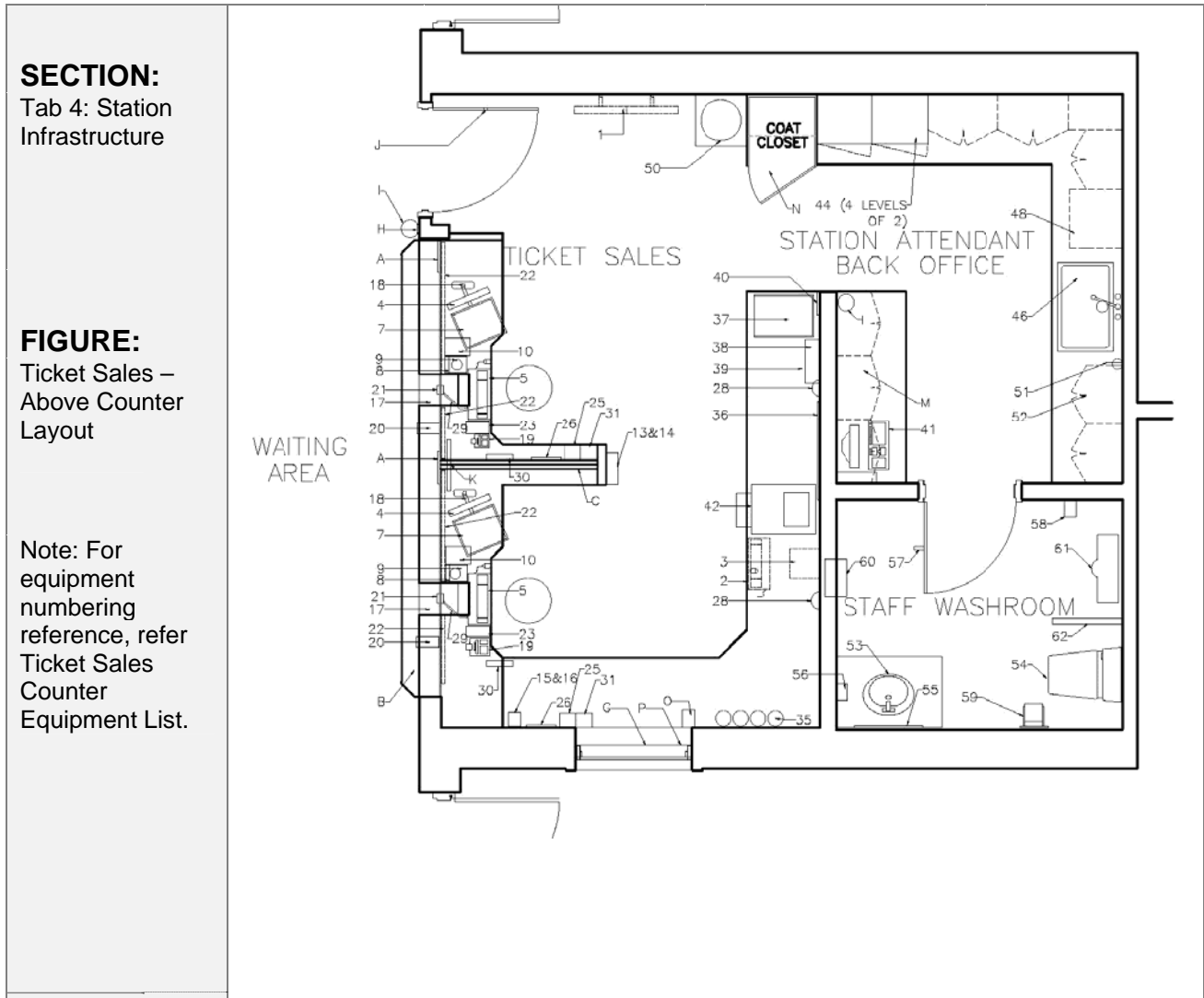




CI-0401

TAB 4: STATION INFRASTRUCTURE
Station Buildings

FIGURE: TICKET SALES – ABOVE COUNTER LAYOUT





CI-0401

TAB 4: STATION INFRASTRUCTURE
Station Buildings

TICKET SALES COUNTER EQUIPMENT LIST					
NO.	COUNTER TOP	UNDER COUNTER	BACK COUNTER	BACK OFFICE	GENERAL
CCTV security system					
1	2 ceiling mounted 485mm (19") monitors				For 3 or more ticket booths, 2 or more CCTV cameras needed
2	1 keyboard & mouse				
3		1 CPU 675x400mm (cable to monitor max 3.9m)			
Corporate PC					
4	1 - 485mm (19") monitor				1 system per booth; Includes ATLS, PC Whiteboard, & Fare Guarntee
5	1 keyboard & mouse	1 KVM switch (works with PRESTO)			
6		1 CPU 675x400mm (cable to monitor max 3.9m)			
PRESTO system					
7	1 - 485mm (19") Touch Screen monitor (mouse & keyboard shared with ATLS)				1 system per booth
8	1 - customer PRESTO balance display				
9	1 Card Interface Device (reader)				
10	1 receipt printer				
11		1 PRESTO CPU 177 x 400 x 530mm (cable to monitor max 1.8m)			



CI-0401

TAB 4: STATION INFRASTRUCTURE
Station Buildings

TICKET SALES COUNTER EQUIPMENT LIST					
NO.	COUNTER TOP	UNDER COUNTER	BACK COUNTER	BACK OFFICE	GENERAL
12		1 UPS 147 x 148 x 419mm			
Telephone System					
13	1 Red Phone				1 system per booth
14	1 Regular Phone				
15	1 Interpreter Handset located at primary ticket booth				
16	1 Handset Recharge Station				
GENERAL EQUIPMENT LIST					
17	1 cash scoop built into counter				1 of each at every booth
18	Monitor arm to accommodate 2 monitors (ATLS & PRESTO)				
19	1 Calculator with power plug				
20	1 Moneris Pin Pad (customer side of division glass)				
21	1 Voice link communication in the center of the ticket seller's position in division glass				
22	1 Semi-Transparent Booth Blinds				
23	1 Moneris Pad (booth side of division glass)				



CI-0401

TAB 4: STATION INFRASTRUCTURE
Station Buildings

TICKET SALES COUNTER EQUIPMENT LIST					
NO.	COUNTER TOP	UNDER COUNTER	BACK COUNTER	BACK OFFICE	GENERAL
24	General Stationary Storage space				
25	Presto card storage space				
26	GO Schedules storage space				
27	1 Button for Station PA System				
28	1 Hold-up Camera				
29	1 Microphone for a Phone/Radio connection				
30	1 Counterfeit Detector				
31	Receipt Organization Storage space				
32		1 cash drawer (right side of seller position)			
33		1 Chubb wired Hold-Up Button (located in proximity of cash drawer)			
34		1 - 914mm (36") Lateral Filing Drawer			
35			Rolls of paper		Drop/Float Safe must not be viewable by public
36			Cork Board wall mounted		
37			1 Courier Box (outgoing and inter-office mail)		
38			1 Defibrillator 340x300x150mm		
39			1 First Aid Kit 270x400x70mm		



CI-0401

TAB 4: STATION INFRASTRUCTURE
Station Buildings

TICKET SALES COUNTER EQUIPMENT LIST					
NO.	COUNTER TOP	UNDER COUNTER	BACK COUNTER	BACK OFFICE	GENERAL
40			1 Intercom AI Phone mounted on back wall of ticket office		
41			1 Back Room PC		
42			1 Multi Functional Printer & printer paper		
43				2 Filing Cabinets in back office	
44				8 - Half Sized Lockable Lockers (pad lock)	
45				Drop Safe and Float Safe w/300mm raised base	
KITCHENETTE					
46				1 Single Stainless steel sink	
47				1 mini fridge	
48				1 microwave	
49				Waste Bin	
50				1 Water Cooler	
51				15 Amp GFI receptacles	
52				1 designated cabinet for dish storage	
WASHROOM					
53				Vanity w/sink	



CI-0401

TAB 4: STATION INFRASTRUCTURE
Station Buildings

TICKET SALES COUNTER EQUIPMENT LIST					
NO.	COUNTER TOP	UNDER COUNTER	BACK COUNTER	BACK OFFICE	GENERAL
54				Floor mounted tank toilet	
55				Mirror	
56				Soap Dispenser	
57				Coat hook	
58				Wall mounted air freshener	
59				Single Roll toilet paper dispenser	
60				Stainless Steel Recessed Paper towel dispenser w/ waste receptacle	
61				Wall mounted Urinal Fixture	
62				Wall mounted Privacy Screen	
TICKET BOOTH AND OFFICE DESIGN REQUIREMENTS					
A	Provision for display on public side of divider glass				General design requirements to be considered
B	Public side of divider glass to be AODA compliant				
C	Slat wall and glass divider is potential option between booths (height can be determined by existing GO counters)				
D	Frosting on glazing facing public preferred by GO				



CI-0401

TAB 4: STATION INFRASTRUCTURE
Station Buildings

TICKET SALES COUNTER EQUIPMENT LIST					
NO.	COUNTER TOP	UNDER COUNTER	BACK COUNTER	BACK OFFICE	GENERAL
E	Substantial foot rest				
F	HVAC should not blow into faces of station attendants seated at ticket booths				
G	Anti-glare glass for heavy glass and glazing south of the ticket office				
H	Chubb alarm pin pad to be located by ticket office access door				
I	Fire Extinguisher to be installed below Chubb pin pad alarm by ticket office access door				
J	Solid Door with 'spy hole' for entry into ticket office				
K	GPS Digital Clock in ticket office				
L		Under counter cabinets w/adjustable shelves			
M			Lockable cabinets for Lost & Found		
N			A coat closet w/louvered doors		
O			Recharge station for flashlight(s)		
P			One-way glass in any exterior windows to the ticket office		
Q			Open shelves w/adjustable shelves		



CI-0401

TAB 4: STATION INFRASTRUCTURE
Station Buildings

TICKET SALES COUNTER EQUIPMENT LIST					
NO.	COUNTER TOP	UNDER COUNTER	BACK COUNTER	BACK OFFICE	GENERAL
R			Bank of drawers in cabinet		
3- 4 ZONE LIGHTING SYSTEM					
S	Ticket Booth Entry Lights				Guidelines for lighting
T	Counter Top Task Lights				
U				Back of office Lights	
V		Under Counter Lights			