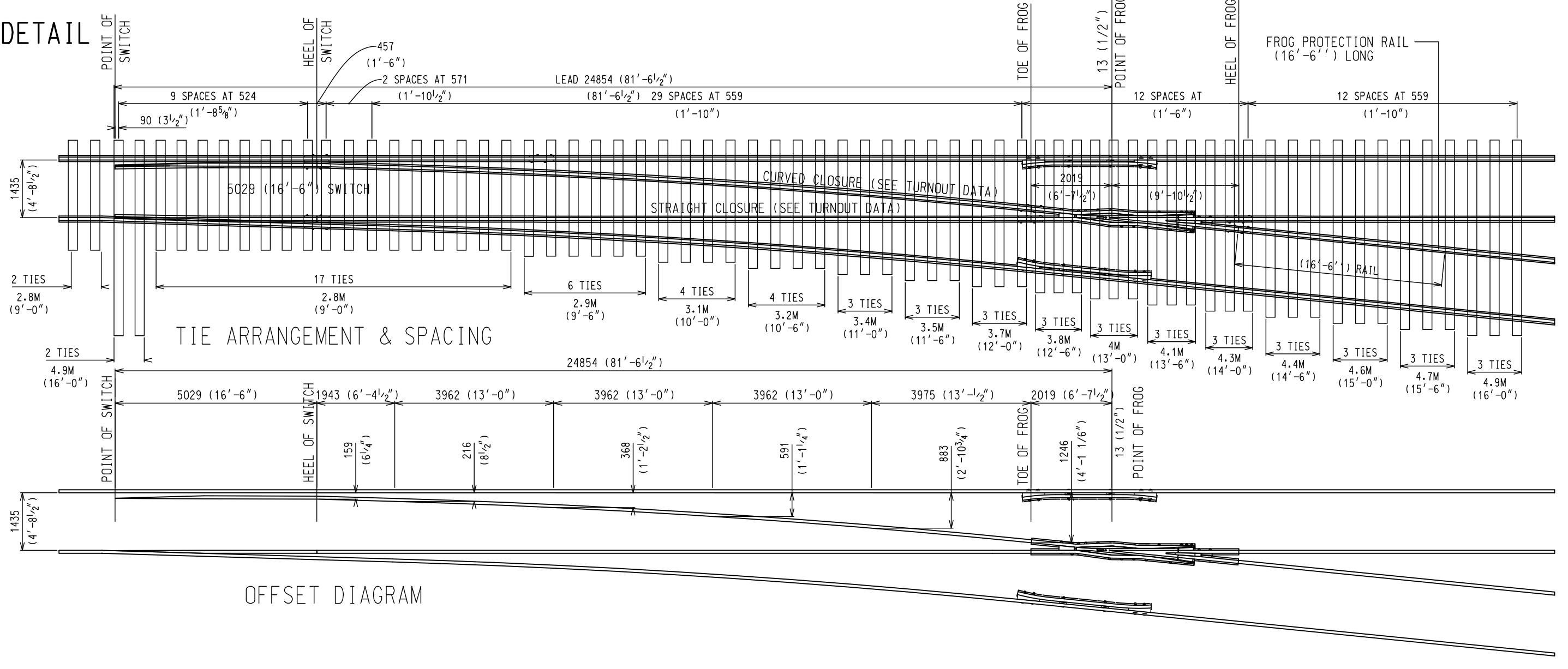
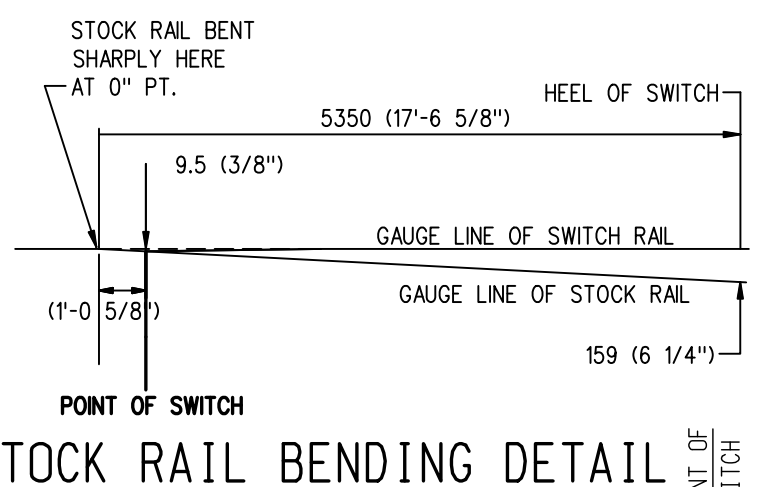


NOTES

- 1- FOR BILL OF MATERIAL, SEE REVERSE SIDE
- 2- TURNOUT TO BE INSTALLED ACCORDING TO RM-3500, LATEST ISSUE.
- 3- FOR OTHER GENERAL ARRANGEMENT TURNOUT DRAWINGS, SEE INDEX DRAWING GTS-0
- 4- WHEN REFERRING TO TURNOUTS, DRAWING NUMBER MUST BE STATED AS A OR B TO INDICATE RIGHT OR LEFT HAND TURNOUT.

A: RIGHT HAND TURNOUT
B: LEFT HAND TURNOUT

5- FOR GENERAL ARRANGEMENT OF SWITCH STAND SEE DRAWING GTS-701



TURNOUT DATA:

FROG NO -----10
 LENGTH OF SWITCH-----16'-6"
 HEEL SPREAD-----6 1/4"
 LEAD-----81'-6 1/2"
 PS TO H.F.-----91'-5"

58'-5" STRAIGHT CLOSURE LENGTH
 MADE UP BY A 58'-5" RAIL OR:
 A 39' AND 19'-5" RAIL
 A 36' AND 22'-5" RAIL
 A 33' AND 25'-5" RAIL
 A 30' AND 28'-5" RAIL

58'-7" CURVE CLOSURE LENGTH
 MADE UP BY A 58'-7" RAIL OR:
 A 39' AND 19'-7" RAIL
 A 36' AND 22'-7" RAIL
 A 33' AND 25'-7" RAIL
 A 30' AND 28'-7" RAIL

METRIC CONVERSION: 1 inch=25.4mm, 1 foot=304.8mm			
No.	Date	Revision	By Approved
1	18/07/27	ADDED IMPERIAL TO METRIC CONVERSION NOTE	
Standard		NO. 10 TURNOUT NON-INSULATED SAMSON POINTS R.B.M FROG-100LB. A.R.A.A. RAIL	
Drawn	Checked	Approved	
MG	GGG		
Date DEC 15, 2017		Plan Number GTS-0103	Rev 1
REFERENCE: TS-103 A/B		Sheet 1 OF 1	

BILL OF MATERIALS FOR GTS-0103

ITEM	DESCRIPTION	STANDARD DRAWING	MARK NO.	QUANTITY	
				A	B
SWITCH PACK					
1	1st. GAUGE PLATE	GTS-0520	G301	1	1
2	2nd. GAUGE PLATE	GTS-0520	G305R	1	-
3	2nd. GAUGE PLATE	GTS-0520	G305L	-	1
4	SWITCH ROD	GTS-0340A	340A	1	1
4	SWITCH ROD	GTS-0340D	340D	1	1
5	RIGHT SAMSON POINT RAIL	GTS-0309A	309A	-	1
	RIGHT POINT RAIL	GTS-0306A	306A	1	-
6	LEFT SAMSON POINT RAIL	GTS-0309B	309B	1	-
	LEFT POINT RAIL	GTS-0306B	306B	-	1
7	SWITCH PLATE	GTS-0508	SP300	8	8
8	SWITCH PLATE	GTS-0509	SP301	10	10
9	SWITCH PLATE	GTS-0504	SP123	2	2
10	SWITCH PLATE	GTS-0507	SP151	2	2
11	SWITCH PLATE	GTS-0507	SP157	2	2
12	SWITCH PLATE	GTS-0506	SP158	2	2
13	HOOK TWIN TIE PLATE	GTS-0503	LR27	8	8
14	HOOK TWIN TIE PLATE	GTS-0503	L27	8	8
15	HOOK TWIN TIE PLATE	GTS-0503	LR31	4	4
16	HOOK TWIN TIE PLATE	GTS-0503	L31	4	4
17	HEEL BLOCK (RIGHT HAND)	GTS-0358	16-6&22CP1-S	1	1
18	HEEL BLOCK (LEFT HAND)	GTS-0358	16-6&22CP2-S	1	1
19	BENT SPLICE BAR (4 HOLE) - 100 LB A.R.A.-A.	GTS-1204B	1204B	2	2
20	STRAIGHT SPLICE BAR (4 HOLE) - 100 LB A.R.A.-A.	GTS-1201	-	1	1
21	SPRING WASHER for 1" DIA. BOLT	GTS-1301	-	24	24
22	1" DIA. 8 NC OVAL NECK TRACK BOLT X 12" LG. C/W SQ. NUT	GTS-1319/9	-	8	8
23	PIPE THIMBLE - 1" DIA. X 2-1/32" LONG	GTS-0345B	B	2	2
24	1/4" COTTER PIN X 2" LG.	-	-	4	4
25	SPRING WASHER for 1 - 1/8" DIA BOLT	GTS-1301	-	4	4
26	1-1/8" DIA. 7 UNC HEX HD. BOLT X 5" LG. C/W HEX NUT	GTS-1311/2	-	4	4
27	ADJUSTABLE RAIL BRACE	GTS-0354	100M-7	12	12
28	7/8" DIA. - 9 UNC SQ. HD. BOLT X 3-3/4" LG.	GTS-1308/5	-	24	24
29	SPRING WASHER for 7/8" DIA. BOLT	GTS-1301	-	24	24
30	DOUBLE WASHER	GTS-0354	M-10	12	12
31	DOUBLE NUT	GTS-0354	M-9	12	12
32	1" DIA. - 8 NC OVAL NECK TRACK BOLT X 5-5/8" LG. C/W SQ. NUT	GTS-1319/1	-	16	16
33	UNDERCUT STOCK RAIL - 100 LB. A.R.A.-A. 39' - 0" LG.	GTS-1105A	1105A	1	1
FROG					
34	#10 - 100 LB. RAIL BOUND MANGANESE STEEL FROG	R11C-170.1	-	1	1
FROG PACK					
35	HOOK TWIN TIE PLATE	GTS-0503	L27	6	6
36	HOOK TWIN TIE PLATE	GTS-0543	L27J	2	2
37	HOOK TWIN TIE PLATE	GTS-0544	L23J	2	2
38	HOOK TWIN TIE PLATE	GTS-0545	L23	12	12
39	HOOK TWIN TIE PLATE	GTS-0503	LR23	2	2
40	HOOK TWIN TIE PLATE	GTS-0503	LR23J	2	2
41	HOOK TWIN TIE PLATE	GTS-0503	LR27J	2	2
42	HOOK TWIN TIE PLATE	GTS-0504	LR27	2	2
43	HOOK TWIN TIE PLATE	GTS-0505	LR31	2	2
44	STRAIGHT SPLICE BAR (4 HOLE) - 100 LB A.R.A.-A.	GTS-1201	-	4	4
45	1" DIA. 8 NC OVAL NECK TRACK BOLT X 5-5/8" LG. C/W SQ. NUT	GTS-1319/1	-	16	16
46	SPRING WASHER for 1" DIA. BOLT	GTS-1301	-	16	16
GUARD RAIL PACK					
47	FROG GUARD RAIL 11' - 0" LONG	GTS-1106	-	2	2
48	HOOK TWIN TIE PLATE	GTS-0503	L23	28	28
49	1-1/4" DIA. 7 UNC SQ. HD. BOLT X 9" LG. C/W SQ. NUT	GTS-1309/67	-	2	2
50	1-1/4" DIA. 7 UNC SQ. HD. BOLT X 9-1/2" LG. C/W SQ. NUT	GTS-1309/68	-	4	4
51	1-1/4" DIA. 7 UNC SQ. HD. BOLT X 10-1/2" LG. C/W SQ. NUT	GTS-1309/71	-	4	4
52	SPRING WASHER for 1 - 1/4" DIA BOLT	GTS-1301	-	10	10
53	HEAD WASHER	GTS-0836L	836L	10	10
54	END CASTING RIGHT HAND 100 LB. A.R.A.-A.	GTS-0846	CG2-S	2	2
55	END CASTING LEFT HAND 100 LB. A.R.A.-A.	GTS-0846	CG3-S	2	2
56	TAIL WASHER (BEVELLED)	GTS-0836H	836H	8	8
57	TAIL WASHER (NOT BEVELLED)	GTS-0836M	836M	2	2
58	ADJUSTABLE BLOCK 100 LB. A.R.A.-A.	GTS-0846	CG1-S	4	4
TURNOUT PACKAGES					
TURNOUT NUMBER	DESCRIPTION			QUANTITY PER TURNOUT	
GTS- 103A	FROG RBM 10-100			1	
	SW-PK NON - INS SAMSON HO NO. 10A-100 LBS.			1	
	GR-PK 100 11'-0"			1	
	FR-PK RBM 10-100			1	
GTS- 103B	FROG RBM 10-100			1	
	SW-PK NON - INS SAMSON HO NO. 10B-100 LBS.			1	
	GR-PK 100 11'-0"			1	
	FR-PK RBM 10-100			1	
ABBREAVATIONS					
SW - PK - SWITCH PAK		SAM - SAMSON		SGM - SELF GUARD MANGANESE	
FR - PK - FROG PAK		HO - HAND OPERATED		RBM - RAIL BOUND MANGANESE	
GR - PK - GUARD RAIL PAK		SO - SPRING OPERATED			
INS - INSULATED		PO - POWER OPERATED			
NOTE:					
1 - For a new installation, necessary rail, bonded insulated joints, splice bars, bolts, washers, rail anchors, connecting rod, switch stand, targe and reflectorized target kit may be required in addition to the materials listed above					
BILL OF SWITCH TIES FOR HAND AND SPRING OPERATION			BILL OF SWITCH FOR POWER OPERATION		
TIES 180 X 230 mm (7" X 9")			TIES 180 X 230 mm (7" X 9")		
LENGTH					
METRES	FEET/INCHES	NO. OF PIECES	METRES	FEET/INCHES	NO. OF PIECES
2.8	9' - 0"	19	2.8	9' - 0"	24
3.1	10' - 0"	10	3.1	10' - 0"	22
3.4	11' - 0"	7	3.4	11' - 0"	15
3.7	12' - 0"	6	3.7	12' - 0"	11
4	13' - 0"	6	4	13' - 0"	9
4.3	14' - 0"	6	4.3	14' - 0"	10
4.6	15' - 0"	6	4.6	15' - 0"	9
4.9	16' - 0"	8	4.9	16' - 0"	8
TOTAL NUMBER OF TIES - 68			TOTAL NUMBER OF TIES - 110		