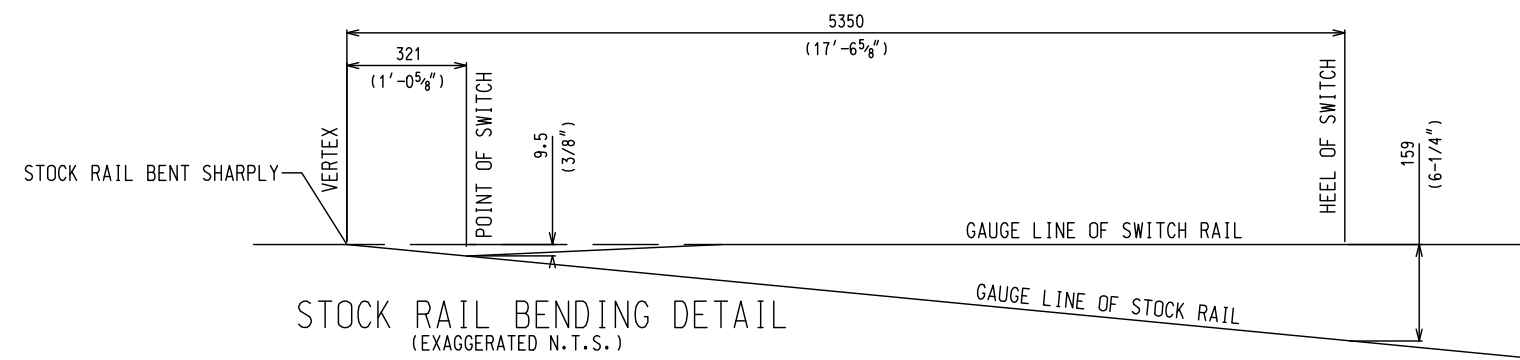


OFFSET DIAGRAM



STOCK RAIL BENDING DETAIL (EXAGGERATED N.T.S.)

TURNOUT DATA

FROG NO. 10
 LENGTH OF SW. PT. 5029 (16'-6")
 HEEL SPREAD 159 (6'-1/4")
 LEAD 24854 (81'-6 1/2")
 P.S. TO H.F. 28016 (91'-11")

17805 (58'-5") STRAIGHT CLOSURE LENGTH
 MADE UP BY A 17805 (58'-5") RAIL OR:
 A 11887 (39') & 5918 (19'-5") RAIL
 A 10973 (36') & 6833 (22'-5") RAIL
 A 10058 (33') & 7747 (25'-5") RAIL
 A 9144 (30') & 8661 (28'-5") RAIL

17856 (58'-7") CURVED CLOSURE LENGTH
 MADE UP BY A 17856 (58'-7") RAIL OR:
 A 11887 (39') & 5969 (19'-7") RAIL
 A 10973 (36') & 6883 (22'-7") RAIL
 A 10058 (33') & 7798 (25'-7") RAIL
 A 9144 (30') & 8712 (28'-7") RAIL

NOTES:

- TURNOUT TO BE INSTALLED AND MAINTAINED IN ACCORDANCE WITH THE LATEST ISSUE OF: GO TRANSIT TRACK STANDARDS RC-0506-02TRK SECTION 16-TURNOUT INSPECTION
- WHEN REFERRING TO MANUAL TURNOUTS, DRAWING NUMBER MUST BE STATED AS "A" OR "B" TO INDICATE:
 A - RIGHT HAND TURNOUT (ILLUSTRATED)
 B - LEFT HAND TURNOUT
- FOR GENERAL ARRANGEMENT OF SWITCH STAND & CONNECTING ROD SEE GTS-0701 AND GTS-0702
- FOR THE VARIOUS STANDARD TURNOUT COMBINATIONS SEE INDEX SHEET GTS-0000
- TURNOUT GEOMETRY, FOR TABLES OF DIMENSIONS AND OFFSETS SEE GTS-0002

ALL METRIC MEASUREMENTS, MILLIMETERS UNLESS STATED OTHERWISE, ARE A ROUNDED SOFT CONVERSION OF BRITISH UNITS SHOWN IN BRACKETS.

METRIC CONVERSION: 1 inch=25.4mm, 1 foot=304.8mm

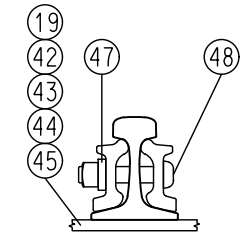
No.	Date	Revision	By Approved
1	18/07/27	ADDED IMPERIAL TO METRIC CONVERSION NOTE	

Standard/ NO. 10 TURNOUT-16'-6" POINTS
 INSULATED-SAMSON POINTS
 R.B.M. FROG-132 LB. R.E. RAIL

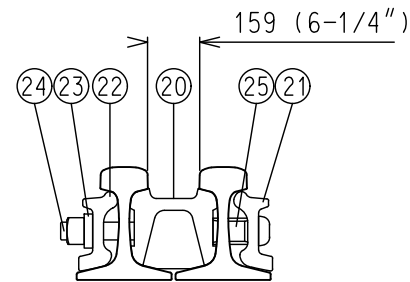
Drawn MC Checked BC Approved [Signature] VP Engineering & Asset Management



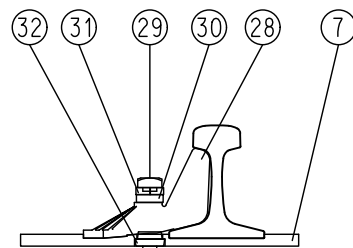
Date SEPT 15/2017 Plan Number GTS-0152 Rev 1



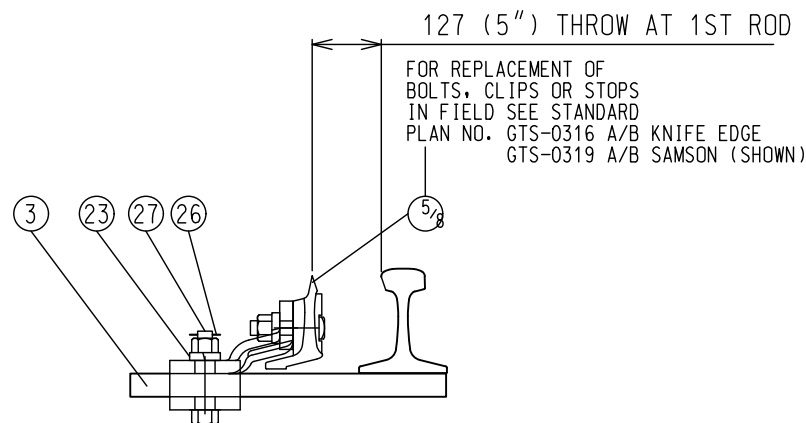
SPLICE BAR ASSEMBLY



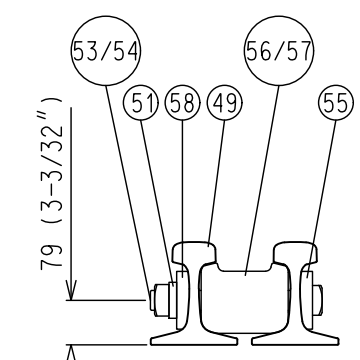
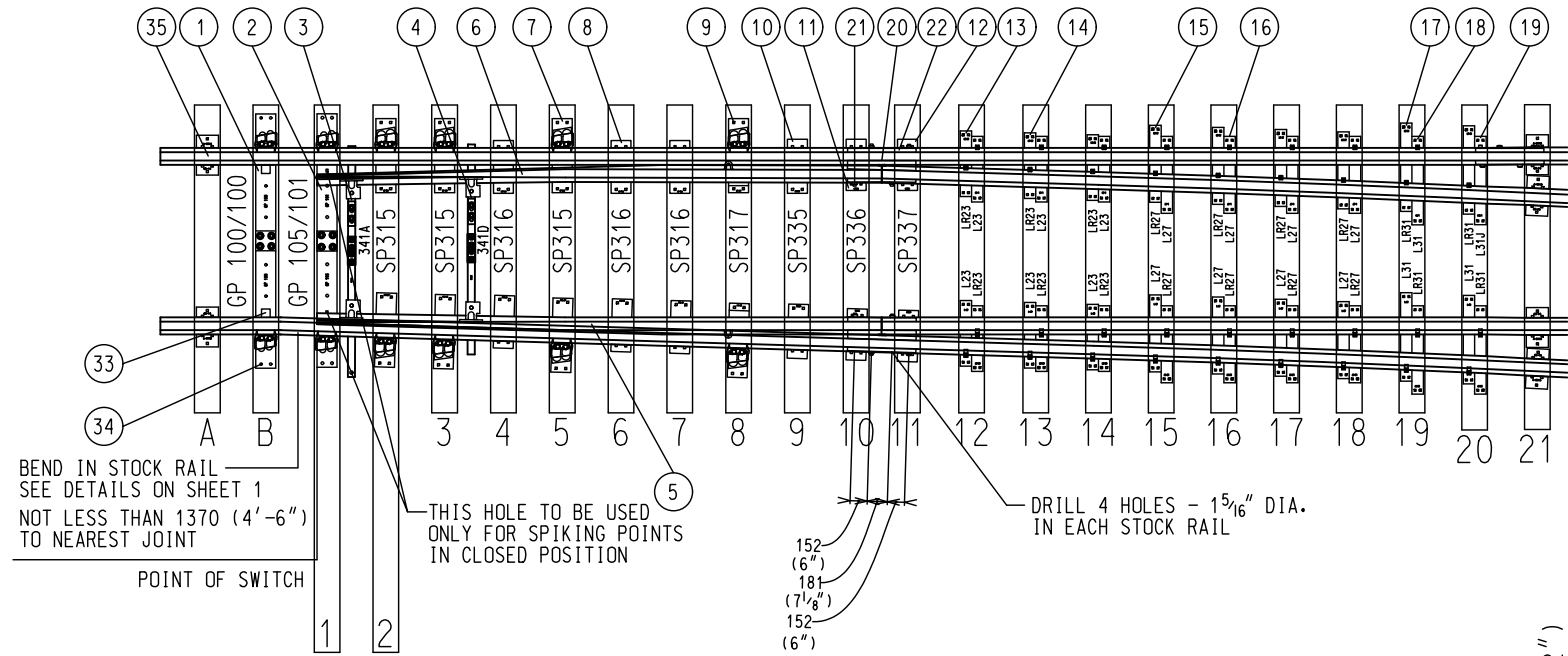
HEEL BLOCK ASSEMBLY



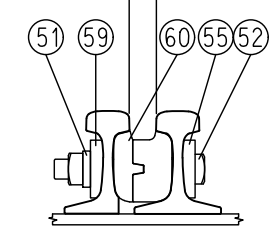
ADJUSTABLE RAIL BRACE ASSEMBLY



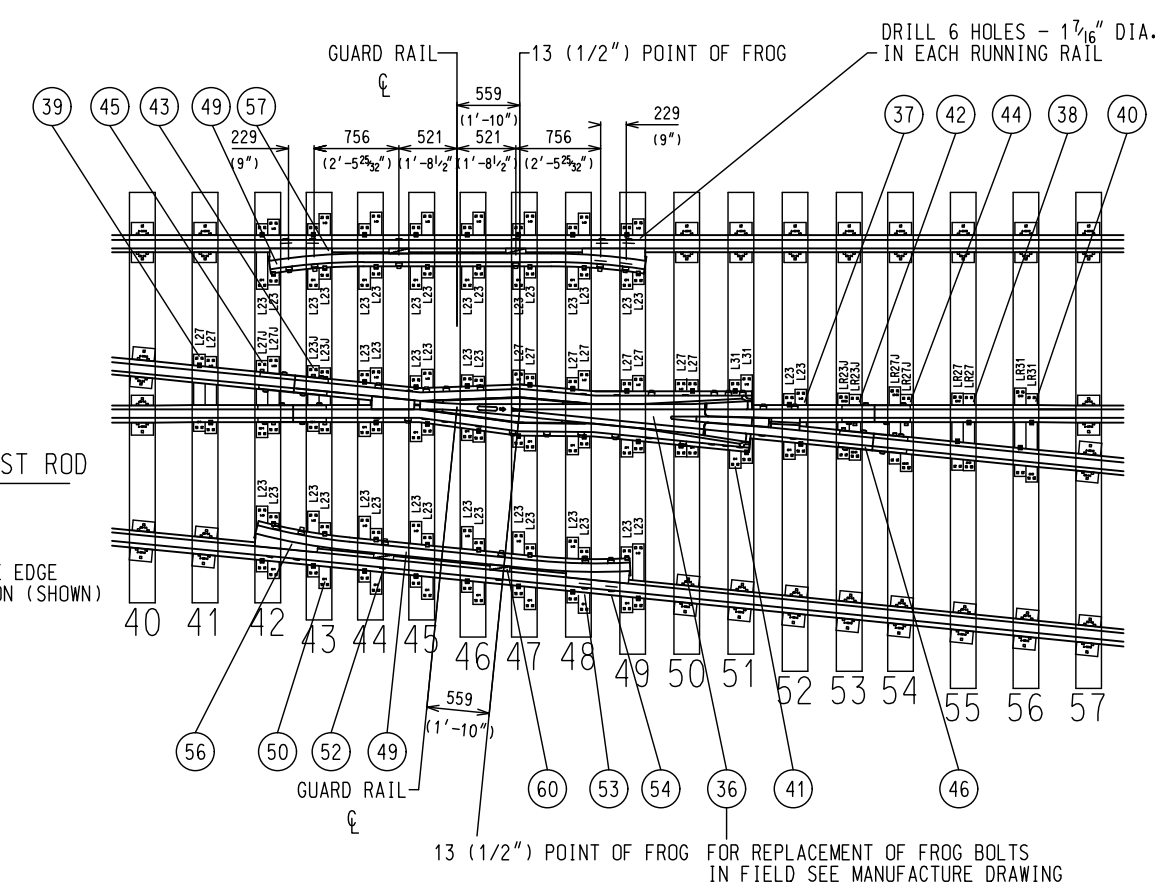
SWITCH CLIP ASSEMBLY



48 (1-7/8") FLANGEWAY
(REFER TO TRACK STANDARDS-RC-0506-02 TRK SECTION 16-TURNOUT INSPECTION)



GUARD RAIL ASSEMBLIES



ALL METRIC MEASUREMENTS, MILLIMETERS UNLESS STATED OTHERWISE, ARE A ROUNDED SOFT CONVERSION OF BRITISH UNITS SHOWN IN BRACKETS.

METRIC CONVERSION: 1 inch=25.4mm, 1 foot=304.8mm

No.	Date	Revision	By Approved
1	18/07/27	ADDED IMPERIAL TO METRIC CONVERSION NOTE	

Standard/ **NO. 10 TURNOUT-16'-6" POINTS
INSULATED-SAMSON POINTS
R.B.M. FROG-132 LB. R.E. RAIL**

Drawn MC Checked BC Approved *VP* Engineering & Asset Management



METROLINX

Date SEPT 15/2017 Plan Number GTS-0152 Rev 1

REFERENCE: CN-TS-152 Sheet 2 OF 2

BILL OF MATERIALS FOR GTS-0152

ITEM	DESCRIPTION	STANDARD DRAWING	MARK NO.	QUANTITY	
				A	B
SWITCH PACK					
1	1st. GAUGE PLATE C/W INSULATION PLATE 100/132	GTS-0522	GP100/GP100	1	1
2	2nd. GAUGE PLATE C/W INSULATION PLATE 100/132	GTS-0522	GP105/GP101	1	-
-	2nd. GAUGE PLATE C/W INSULATION PLATE 100/132	GTS-0522	GP101/GP102	-	1
3	SWITCH ROD	GTS-0341A	341A	1	1
4	SWITCH ROD	GTS-0341D	341D	1	1
5	RIGHT SAMSON POINT RAIL	GTS-0319A	319A	-	1
	RIGHT POINT RAIL	GTS-0316A	316A	1	-
6	LEFT SAMSON POINT RAIL	GTS-0319B	319B	1	-
	LEFT POINT RAIL	GTS-0316B	316B	-	1
7	SWITCH PLATE	GTS-0508	SP315	6	6
8	SWITCH PLATE	GTS-0509	SP316	6	6
9	SWITCH PLATE	GTS-0510	SP317	2	2
10	SWITCH PLATE	GTS-0511	SP335	2	2
11	SWITCH PLATE	GTS-0511	SP336	2	2
12	SWITCH PLATE	GTS-0511	SP337	2	2
13	HOOK TWIN TIE PLATE	GTS-0503	LR23	6	6
14	HOOK TWIN TIE PLATE	GTS-0503	L23	6	6
15	HOOK TWIN TIE PLATE	GTS-0503	LR27	8	8
16	HOOK TWIN TIE PLATE	GTS-0503	L27	8	8
17	HOOK TWIN TIE PLATE	GTS-0503	LR31	4	4
18	HOOK TWIN TIE PLATE	GTS-0503	L31	3	3
19	HOOK TWIN TIE PLATE	GTS-0503	L31J	1	1
20	HEEL BLOCK	GTS-0360	16-6&22GP1-S	2	2
21	BENT SPLICE BAR(4 HOLE) - 132/136 LB. R.E.	GTS-1204D	1204D	2	2
22	STRAIGHT SPLICE BAR (4 HOLE) - 132/136 LB. R.E.	GTS-1203	-	1	1
23	SPRING WASHER for 1 - 1/8" DIA. BOLT	GTS-1301	-	12	12
24	1 - 1/8"DIA. - 7 NC OVAL NECK TRACK BOLT X 12 - 1/2" LG. C/W SQ. NUT	GTS-1320/4	-	8	8
25	PIPE THIMBLE - 1 - 1/4" DIA. X 2 - 3/8" LONG	GTS-0345J	J	2	2
26	1/4" COTTER PIN X 2" LG.	-	-	4	4
27	1-1/8" DIA. - 7 UNC HEX HD. BOLT X 5" LG. C/W HEX NUT	GTS-1311/2	-	4	4
28	ADJUSTABLE RAIL BRACE	GTS-0354	132M-14	12	12
29	7/8" DIA. 9 UNC SQ. HD. BOLT X 3-3/4" LG.	GTS-1308/5	-	24	24
30	SPRING WASHER for 7/8" DIA. BOLT	GTS-1301	-	24	24
31	DOUBLE WASHER	GTS-0354	M-10	12	12
32	DOUBLE NUT	GTS-0354	M-9	12	12
33	PANDROL CLIP - PR 631A	GTS-1322	-	2	2
34	DOUBLE SPRING WASHER - TYPE FE6	GTS-1310	-	16	16
35	UNDERCUT STOCK RAIL - 132 LB. R.E. 39' - 0" LG.	GTS-1105C	1105C	1	1
FROG					
36	#10-132 LB. RAIL BOUND MANGANESE STEEL FROG	GTS-0823	-	1	1
FROG PACK					
37	HOOK TWIN TIE PLATE	GTS-0503	L23	8	8
38	HOOK TWIN TIE PLATE	GTS-0503	LR27	2	2
39	HOOK TWIN TIE PLATE	GTS-0503	L27	10	10
40	HOOK TWIN TIE PLATE	GTS-0503	LR31	2	2
41	HOOK TWIN TIE PLATE	GTS-0503	L31	2	2
42	HOOK TWIN TIE PLATE	GTS-0503	LR23J	2	2
43	HOOK TWIN TIE PLATE	GTS-0503	L23J	2	2
44	HOOK TWIN TIE PLATE	GTS-0503	LR27J	2	2
45	HOOK TWIN TIE PLATE	GTS-0503	L27J	2	2
46	STRAIGHT SPLICE BAR (4 HOLE) - 132/136 LB. R.E.	GTS-1203	-	4	4
47	SPRING WASHER for 1 -1/8" DIA. BOLT	GTS-1301	-	16	16
48	1 - 1/8" DIA. - 7 NC OVAL NECK TRACK BOLT X 5-7/8" LG. C/W SQ. NUT	GTS-1320/1	-	16	16
GUARD RAIL PACK					
49	FROG GUARD RAIL 11' - 0" LONG	GTS-1106	-	2	2
50	HOOK TWIN TIE PLATE	GTS-0503	L23	32	32
51	SPRING WASHER for 1 - 3/8" DIA. BOLT	GTS-1301	-	12	12
52	1-3/8" DIA. - 6 UNC SQ. HD. BOLT X 9 - 1/2" LG. C/W SQ. NUT	GTS-1309/100	-	4	4
53	1-3/8" DIA. - 6 UNC SQ. HD. BOLT X 10 - 1/2" LG. C/W SQ. NUT	GTS-1309/102	-	4	4
54	1-3/8" DIA. - 6 UNC SQ. HD. BOLT X 11" LG. C/W SQ. NUT	GTS-1309/104	-	4	4
55	HEAD WASHER	GTS-0837J	837J	12	12
56	END CASTING LEFT HAND 132 LB. R.E.	GTS-0848	GG2-S	2	2
57	END CASTING RIGHT HAND 132 LB. R.E.	GTS-0848	GG3-S	2	2
58	TAIL WASHER (BEVELLED)	GTS-0837B	837B	8	8
59	TAIL WASHER (NOT BEVELLED)	GTS-0837K	837K	4	4
60	ADJUSTABLE BLOCK 132 LB. R.E.	GTS-0848	GG1-S	8	8
<p align="center">***TO UPGRADE EXISTING TURNOUT, REPLACE 132 LB. PLATES WITH EQUIVALENT 136 LB. PLATES. ***</p> <p align="center">*** MINOR TIE SPACING ADJUSTMENTS MAY BE NECESSARY. ***</p>					
TURNOUT PACKAGES					
TURNOUT NUMBER	DESCRIPTION	QUANTITY PER TURNOUT			
GTS- 152A	FROG RBM 10 - 132	1			
	SW-PK INS SAMSON HO NO. 10A - 132 LBS.	1			
	GR-PK 132 11' - 0"	1			
	FR-PK RBM 10 - 132	1			
GTS- 152B	FROG RBM 10 - 132	1			
	SW-PK INS SAMSON HO NO. 10B - 132 LBS.	1			
	GR-PK 132 11' - 0"	1			
	FR-PK RBM 10 - 132	1			
ABBREAVATIONS					
SW - PK - SWITCH PAK		SAM - SAMSON MANGANESE		SGM - SELF GUARD	
FR - PK - FROG PAK		HO - HAND OPERATED MANGANESE		RBM - RAIL BOUND	
GR - PK - GUARD RAIL PAK		SO - SPRING OPERATED			
INS - INSULATED		PO - POWER OPERATED			
NOTE:					
1 - For a new installation, necessary rail, bonded insulated joints, splice bars, bolts, washers, rail anchors, connecting rod, switch stand, targe and reflectorized target kit may be required in addition to the materials listed above					
BILL OF SWITCH TIES FOR HAND AND SPRING OPERATION					
TIES 180 X 230 mm (7" X 9")					
LENGTH					
METRES	FEET/INCHES	NO. OF PIECES			
2.8	9' - 0"	19			
3.1	10' - 0"	10			
3.4	11' - 0"	7			
3.7	12' - 0"	6			
4.0	13' - 0"	6			
4.3	14' - 0"	6			
4.6	15' - 0"	6			
4.9	16' - 0"	8			
TOTAL NUMBER OF TIES - 68					