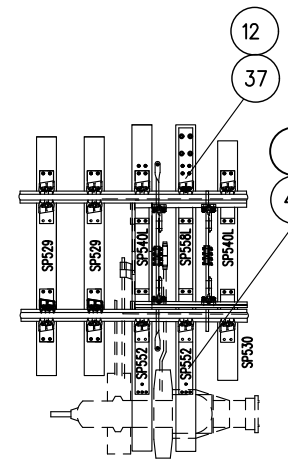
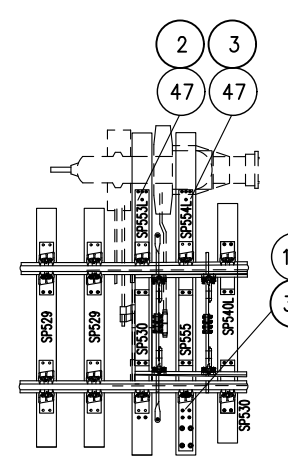


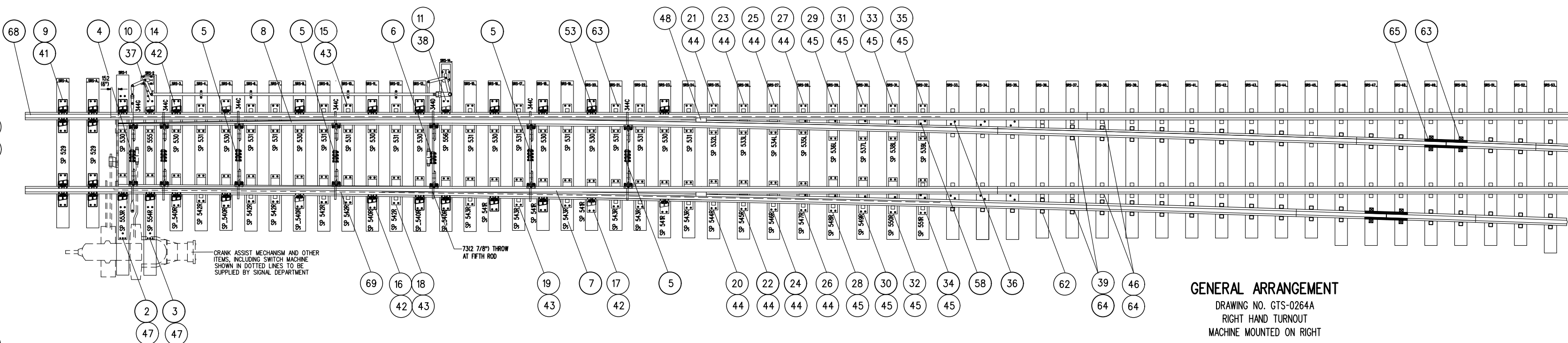
DRAWING NO. GTS-0264 B
RIGHT HAND TURNOUT
MACHINE MOUNTED ON LEFT



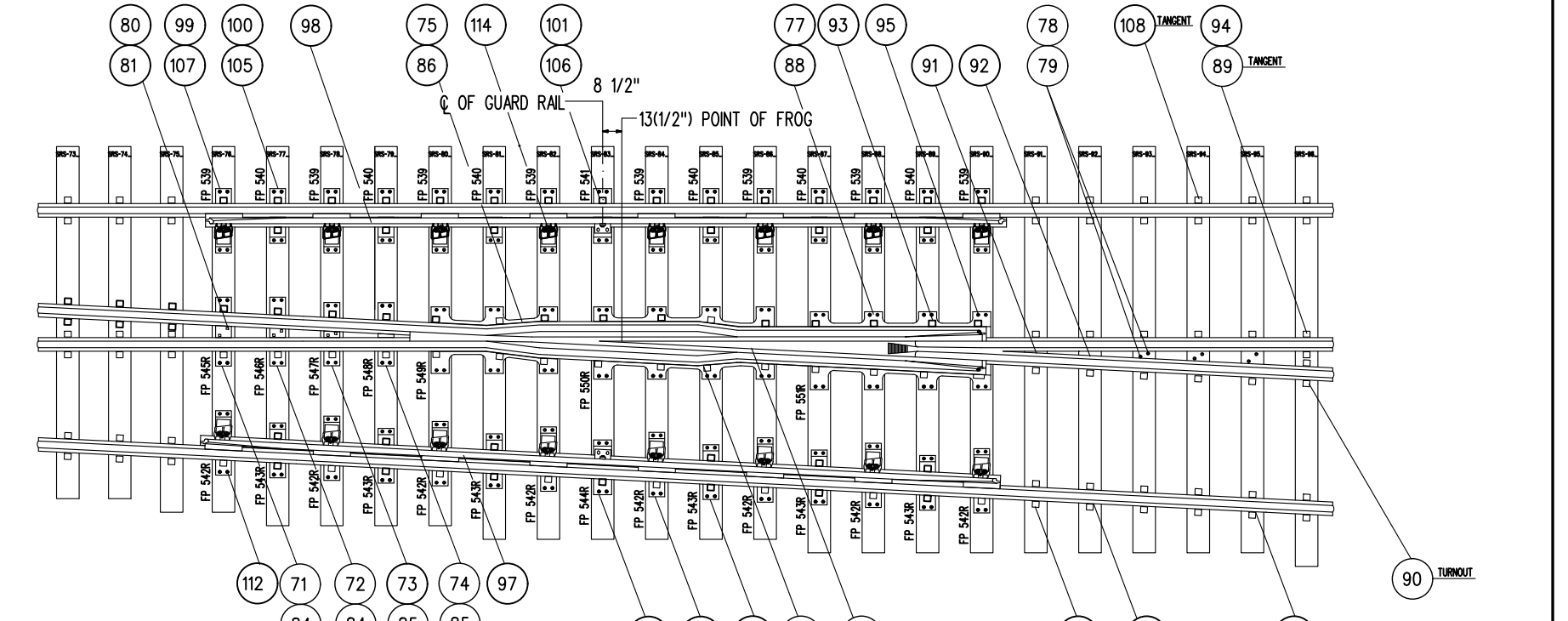
DRAWING NO. GTS-0264 C
LEFT HAND TURNOUT
MACHINE MOUNTED ON RIGHT



DRAWING NO. GTS-0264 D
LEFT HAND TURNOUT
MACHINE MOUNTED ON LEFT



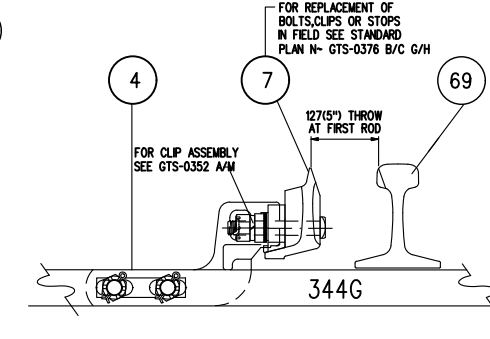
GENERAL ARRANGEMENT
DRAWING NO. GTS-0264A
RIGHT HAND TURNOUT
MACHINE MOUNTED ON RIGHT



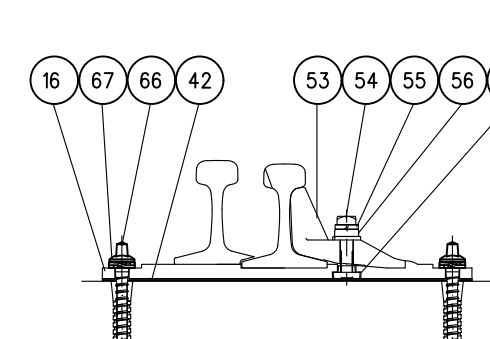
TURNOUT DATA

FROG NO.	20
LENGTH OF SWITCH POINT RAIL	17932(58'-10")
HEEL SPREAD AT 1887(39'-0")	15916(1'-4")
LEAD	47562(156'-0 1/2")
P.S. TO H.F.	54966(180'-4")
22453(73'-8") STRAIGHT CLOSURE MADE UP BY : 1887(39'-0") AND 10566(34'-8")	
22479(73'-9") CURVED CLOSURE MADE UP BY : 1887(39'-0"), 3658(12'-0") AND 6934(22'-9") RAIL	

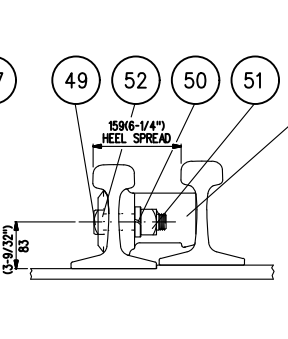
- NOTES:
- TURNOUT TO BE INSTALLED AND MAINTAINED IN ACCORDANCE WITH THE LATEST ISSUE OF :
GO TRACK STANDARDS 3500 TURNOUTS
GO TRACK STANDARDS 3502 POWER, SPRING AND INSULATED SWITCHES
GO TRACK STANDARDS 3506 SWITCH STANDS, SWITCH LAMPS AND TARGETS, WHERE APPLICABLE
 - WHEN REFERRING TO POWER OPERATED TURNOUTS, DRAWING NUMBER MUST BE STATED AS 'A, B, C' OR 'D' TO INDICATE :
A- RIGHT HAND TURNOUT P.O. MACHINE ON RIGHT
B- RIGHT HAND TURNOUT P.O. MACHINE ON LEFT
C- LEFT HAND TURNOUT P.O. MACHINE ON RIGHT
D- LEFT HAND TURNOUT P.O. MACHINE ON LEFT
 - FOR VARIOUS STANDARD TURNOUT COMBINATIONS SEE INDEX SHEET GTS-0000.



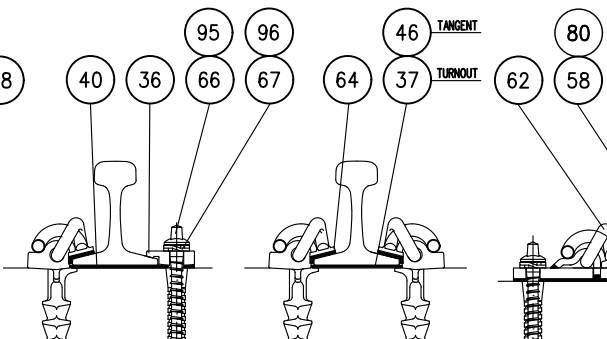
"MJS" CLIP ASSEMBLY



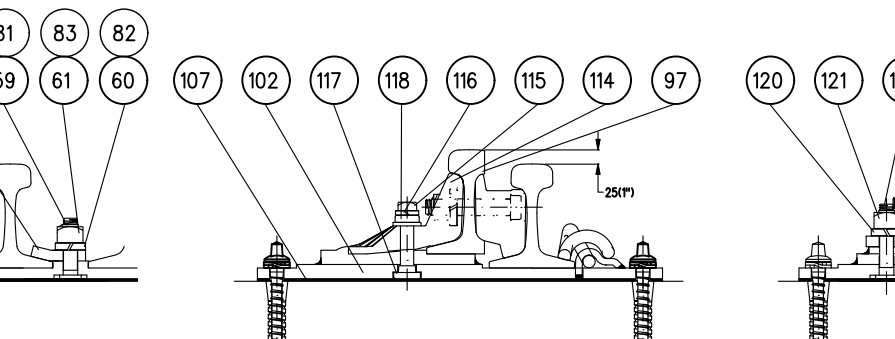
ADJUSTABLE RAIL BRACE ASSEMBLY



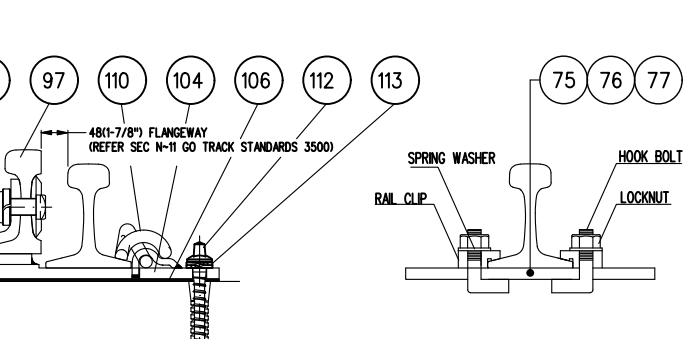
HEEL BLOCK ASSEMBLY



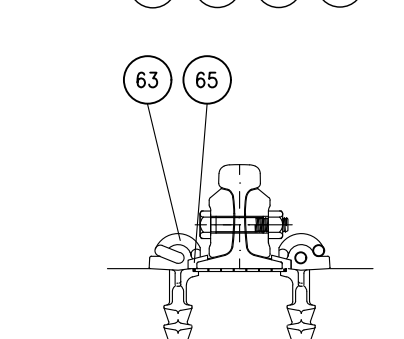
TYPICAL HOLD-DOWN ASSEMBLIES



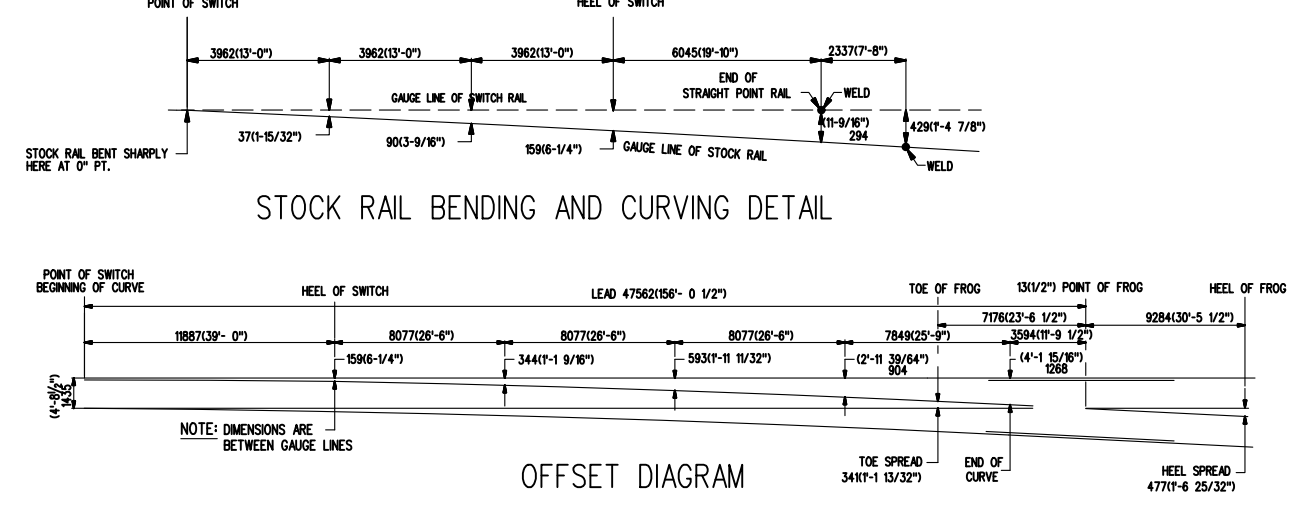
GUARD RAIL ASSEMBLY



FROG PROTECTION RAIL ASSEMBLY



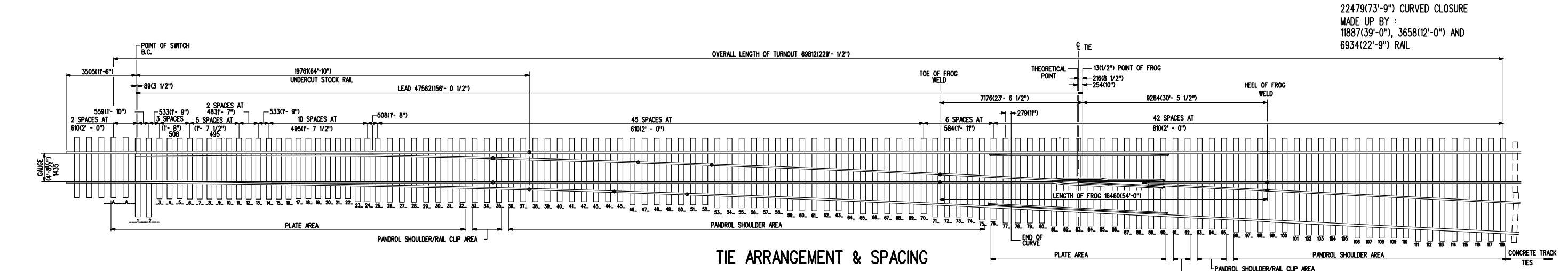
TYPICAL BONDED INSULATED RAIL JOINT



STOCK RAIL BENDING AND CURVING DETAIL



OFFSET DIAGRAM



TIE ARRANGEMENT & SPACING

METRIC CONVERSION: 1 inch=25.4mm, 1 foot=304.8mm

No.	Date	Revision	By Approved
1	18/07/27	ADDED IMPERIAL TO METRIC CONVERSION NOTE	

Standard
NO. 20 LATERAL TURNOUT-58'10"
POWER OPERATED-SAMSON POINT SWITCH
UNIFORM RISER DESIGN-ALL WELDED RAIL
RBM FROG-136LB. RE RAIL-CONCRETE TIES

Drawn RFP Checked RP Approved [Signature]
Date SEPT 15/2017 Plan Number GTS-0264 Rev 1

REFERENCE: TS-0264_R5 Sheet 1 OF 1

BILL OF MATERIALS FOR GTS-0264

ITEM	DESCRIPTION	STANDARD DRAWING	MARK NO.	QUANTITY			
				A	B	C	D
SWITCH PACK							
1	MOTOR SWITCH PLATE	GTS-0574	SP552	-	2	2	-
2	MOTOR SWITCH PLATE	GTS-0575	SP553R	1	-	-	-
	MOTOR SWITCH PLATE	GTS-0575	S6P553L	-	-	-	1
3	MOTOR SWITCH PLATE	GTS-0575	SP554R	1	-	-	-
	MOTOR SWITCH PLATE	GTS-0575	SP554L	-	-	-	1
4	SWITCH ROD	GTS-0344G	344G	1	1	1	1
5	SWITCH ROD	GTS-0344C	344C	1	1	1	1
6	SWITCH ROD	GTS-0-344D	344D	1	1	1	1
7	RIGHT SAMSON POINT RAIL	GTS-0382D	382D	1	1	-	-
	RIGHT SAMSON CURVED POINT RAIL	GTS-0382A	382A	-	-	-	1
8	LEFT SAMSON POINT RAIL	GTS-0382C	382C	-	-	-	1
	LEFT SAMSON CURVED POINT RAIL	GTS-0382B	382B	1	1	-	-
9	"A" TIE SWITCH PLATE	GTS-0562	SP529	4	4	4	4
10	SWITCH PLATE	GTS-0584	SP555	1	-	-	1
11	SWITCH PLATE	GTS-0584	SP556	1	-	-	1
12	SWITCH PLATE (RIGHT HAND)	GTS-0585	SP558R	-	1	-	-
	SWITCH PLATE (LEFT HAND)	GTS-0585	SP558L	-	-	1	-
13	SWITCH PLATE (RIGHT HAND)	GTS-0585	SP559R	-	1	-	-
	SWITCH PLATE (LEFT HAND)	GTS-0563	SP559L	-	-	1	-
14	SWITCH PLATE	GTS-0564	SP530	10	9	9	10
15	SWITCH PLATE	GTS-0568	SP531	12	12	12	12
16	SWITCH PLATE (RIGHT HAND)	GTS-0568	SP540R	6	6	-	-
	SWITCH PLATE (LEFT HAND)	GTS-0568	SP540L	-	-	6	6
17	SWITCH PLATE (RIGHT HAND)	GTS-0568	SP541R	4	4	-	-
	SWITCH PLATE (LEFT HAND)	GTS-0569	SP541L	-	-	4	4
18	SWITCH PLATE (RIGHT HAND)	GTS-0569	SP542R	6	6	-	-
	SWITCH PLATE (LEFT HAND)	GTS-0569	SP542L	-	-	6	6
19	SWITCH PLATE (RIGHT HAND)	GTS-0569	SP543R	6	6	-	-
	SWITCH PLATE (LEFT HAND)	GTS-0569	SP543L	-	-	6	6
20	SWITCH PLATE (RIGHT SIDE FOR RIGHT HAND TURNOUT)	GTS-0571	SP544R	1	1	-	-
	SWITCH PLATE (LEFT SIDE FOR LEFT HAND TURNOUT)	GTS-0571	SP544L	-	-	1	1
21	SWITCH PLATE (RIGHT SIDE FOR RIGHT HAND TURNOUT)	GTS-0565	SP532R	-	-	1	1
	SWITCH PLATE (LEFT SIDE FOR LEFT HAND TURNOUT)	GTS-0565	SP532L	1	1	-	-
22	SWITCH PLATE (RIGHT SIDE FOR RIGHT HAND TURNOUT)	GTS-0571	SP545R	1	1	-	-
	SWITCH PLATE (LEFT SIDE FOR LEFT HAND TURNOUT)	GTS-0571	SP545L	-	-	1	1
23	SWITCH PLATE (RIGHT SIDE FOR RIGHT HAND TURNOUT)	GTS-0565	SP533R	-	-	1	1
	SWITCH PLATE (LEFT SIDE FOR LEFT HAND TURNOUT)	GTS-0565	SP533L	1	1	-	-
24	SWITCH PLATE (RIGHT SIDE FOR RIGHT HAND TURNOUT)	GTS-0571	SP546R	1	1	-	-
	SWITCH PLATE (LEFT SIDE FOR LEFT HAND TURNOUT)	GTS-0571	SP546L	-	-	1	1
25	SWITCH PLATE (RIGHT SIDE FOR RIGHT HAND TURNOUT)	GTS-0565	SP534R	-	-	1	1
	SWITCH PLATE (LEFT SIDE FOR LEFT HAND TURNOUT)	GTS-0565	SP534L	1	1	-	-
26	SWITCH PLATE (RIGHT SIDE FOR RIGHT HAND TURNOUT)	GTS-0572	SP547R	1	1	-	-
	SWITCH PLATE (LEFT SIDE FOR LEFT HAND TURNOUT)	GTS-0572	SP547L	-	-	1	1
27	SWITCH PLATE (RIGHT SIDE FOR RIGHT HAND TURNOUT)	GTS-0566	SP535R	-	-	1	1
	SWITCH PLATE (LEFT SIDE FOR LEFT HAND TURNOUT)	GTS-0566	SP535L	1	1	-	-
28	SWITCH PLATE (RIGHT SIDE FOR RIGHT HAND TURNOUT)	GTS-0572	SP548R	1	1	-	-
	SWITCH PLATE (LEFT SIDE FOR LEFT HAND TURNOUT)	GTS-0572	SP548L	-	-	1	1
29	SWITCH PLATE (RIGHT SIDE FOR RIGHT HAND TURNOUT)	GTS-0566	SP536R	-	-	1	1
	SWITCH PLATE (LEFT SIDE FOR LEFT HAND TURNOUT)	GTS-0566	SP536L	1	1	-	-
30	SWITCH PLATE (RIGHT SIDE FOR RIGHT HAND TURNOUT)	GTS-0572	SP549R	1	1	-	-
	SWITCH PLATE (LEFT SIDE FOR LEFT HAND TURNOUT)	GTS-0572	SP549L	-	-	1	1
31	SWITCH PLATE (RIGHT SIDE FOR RIGHT HAND TURNOUT)	GTS-0566	SP537R	-	-	1	1
	SWITCH PLATE (LEFT SIDE FOR LEFT HAND TURNOUT)	GTS-0566	SP537L	1	1	-	-
32	SWITCH PLATE (RIGHT SIDE FOR RIGHT HAND TURNOUT)	GTS-0572	SP550R	1	1	-	-
	SWITCH PLATE (LEFT SIDE FOR LEFT HAND TURNOUT)	GTS-0572	SP550L	-	-	1	1
33	SWITCH PLATE (RIGHT SIDE FOR RIGHT HAND TURNOUT)	GTS-0566	SP538R	-	-	1	1
	SWITCH PLATE (LEFT SIDE FOR LEFT HAND TURNOUT)	GTS-0566	SP538L	1	1	-	-
34	SWITCH PLATE (RIGHT SIDE FOR RIGHT HAND TURNOUT)	GTS-0573	SP551R	1	1	-	-
	SWITCH PLATE (LEFT SIDE FOR LEFT HAND TURNOUT)	GTS-0573	SP551L	-	-	1	1
35	SWITCH PLATE (RIGHT SIDE FOR RIGHT HAND TURNOUT)	GTS-0567	SP539R	-	-	1	1
	SWITCH PLATE (LEFT SIDE FOR LEFT HAND TURNOUT)	GTS-0567	SP539L	1	1	-	-
36	RAIL CLIP	GTS-1335A	-	12	12	12	12
37	TIE PAD 555	GTS-0527	TP555	1	1	1	1
38	TIE PAD 559	GTS-0527	TP559	1	1	1	1
39	TIE PAD 553	GTS-0527	TP553	-	-	-	-
	TIE PAD 553 (GENSTAR ONLY)	GTS-0527	TP553	80	80	80	80
40	TIE PAD 554	GTS-0527	TP554	12	12	12	12
41	TIE PAD 529	GTS-0527	TP529	4	4	4	4
42	TIE PAD 530	GTS-0527	TP530	20	20	20	20
43	TIE PAD 531	GTS-0527	TP531	22	22	22	22
44	TIE PAD 532	GTS-0527	TP532	8	8	8	8
45	TIE PAD 536	GTS-0527	TP536	8	8	8	8
46	TIE PAD 556	GTS-0527	TP556	160	160	160	160
	TIE PAD 556 (GENSTAR ONLY)	GTS-0527	TP556	80	80	80	80
47	TIE PAD 552	GTS-0527	TP552	2	2	2	2
48	HEEL BLOCK - SYMMETRICAL	GTS-0583	CN383	2	2	2	2
49	1 - 1/8" DIA. - 7 UNC SQ. HD. BOLT X 4-1/2" LG. C/W SQ. NUT	GTS-1309/31	-	4	4	4	4
50	SPRING WASHER for 1 - 1/8" DIA. BOLT	GTS-1301	-	4	4	4	4
51	LOCKNUT FOR 1 - 1/8" DIA. - 7 UNC BOLT	GTS-1302	-	4	4	4	4
52	HEADWASHER FPR 1-3/16" DIA. BOLT (NOT BEVELLED)	GTS-0837Q	837Q	4	4	4	4
53	ADJUSTABLE RAIL BRACE	GTS-0354	132M-14	32	32	32	32
54	7/8" DIA. 9 UNC SQ. HD. BOLT X 3-3/4" LG.	GTS-1308/5	-	64	64	64	64
55	SPRING WASHER for 7/8" DIA. BOLT	GTS-1301	-	64	64	64	64
56	DOUBLE WASHER	GTS-0354	M-10	32	32	32	32
57	DOUBLE NUT	GTS-0354	M-9	32	32	32	32
58	HOLD DOWN CLIP	GTS-1334	FS156	12	12	12	12
59	1" DIA. - 8 UNC SQ. HEAD SW. NECK CARRIAGE BOLT X 3-1/2" LG.	GTS-1307/1	-	12	12	12	12
60	SPRING WASHER for 1" DIA. BOLT	GTS-1301	-	12	12	12	12
61	LOCKNUT FOR 1" DIA. - 8 UNC BOLT	GTS-1302	-	12	12	12	12
62	PANDROL CLIP - e2009	GTS-1322	-	366	366	366	366
63	PANDROL CLIP - e2063 (FOR INSULATED RAIL JOINTS))	GTS-1322	-	8	8	8	8
64	INSULATOR - HD8-3855-PANDROL DWG. NO. 3855	-	-	322	322	322	322
65	INSULATOR PANDROL - TYPE 2204 (FOR INSULATED RAIL JOINTS)	GTS-1206	-	8	8	8	8
66	TIE SCREW TYPE Ss8 (UNPOINTED) 24mm DIA. X 152mm LONG	GTS-1315	-	288	288	288	288
67	DOUBLE SPRING WASHER - TYPE FE6	GTS-1310	-	288	288	288	288
68	UNDERCUT STOCK RAIL - LEFT HAND - 136 LB. R.E. 78' - 0" LG.	GTS-1105U	1105U	-	-	1	1
	UNDERCUT STOCK RAIL - RIGHT HAND - 136 LB. R.E. 78' - 0" LG.	GTS-1105S	1105S	1	1	-	-
69	BENT UNDERCUT STOCK RAIL - R/H - 136 LB. R.E. 78' - 0" LG.	GTS-1109MM	1109MM	1	1	-	-
	BENT UNDERCUT STOCK RAIL - L/H - 136 LB. R.E. 78' - 0" LG.	GTS-1109NN	1109NN	-	-	1	1
FROG							
70	#20-136 LB. RAIL BOUND MANGANESE STEEL FROG	D-11922 NOR	-	1	1	1	1
	NOTE: THE FOLLOWING ITEMS ARE TO BE PACKED FOR THE FROG PROTECTION ASSEMBLY			-	-	-	-
	RAIL CLIP	GTS-1335A	-	16	16	16	16
	7/8" DIA. 9 UNC HOOK BOLT X 4" LG.	GTS-1312	-	16	16	16	16
	SPRING WASHER for 7/8" DIA. BOLT	GTS-1301	-	16	16	16	16
	LOCKNUT FOR 7/8" DIA. - 9 UNC BOLT	GTS-1302	-	16	16	16	16
FROG PACK							
71	FROG PLATE (RIGHT HAND)	GTS-0582	FP545R	1	1	-	-
	FROG PLATE (LEFT HAND)	GTS-0582	FP545L	-	-	1	1
72	FROG PLATE (RIGHT HAND)	GTS-0582	FP546R	1	1	-	-
	FROG PLATE (LEFT HAND)	GTS-0582	FP546L	-	-	1	1
73	FROG PLATE (RIGHT HAND)	GTS-0587	FP547R	1	1	-	-
	FROG PLATE (LEFT HAND)	GTS-0587	FP547L	-	-	1	1
74	FROG PLATE (RIGHT HAND)	GTS-0583	FP548R	1	1	-	-
	FROG PLATE (LEFT HAND)	GTS-0583	FP548L	-	-	1	1
75	FROG PLATE (RIGHT HAND)	FS-251	FP549R	1	1	-	-
	FROG PLATE (LEFT HAND)	FS-251	FP549L	-	-	1	1
76	FROG PLATE (RIGHT HAND)	FS-252	FP550R	1	1	-	-
	FROG PLATE (LEFT HAND)	FS-252	FP550L	-	-	1	1
77	FROG PLATE (RIGHT HAND)	FS-253	FP551R	1	1	-	-
	FROG PLATE (LEFT HAND)	FS-253	FP551L	-	-	1	1
78	RAIL CLIP	GTS-1335A	-	6	6	6	6
79	TIE PAD 554	GTS-0527	TP554	6	6	6	6
80	HOLD DOWN CLIP	GTS-1334	FS156	6	6	6	6
81	1" DIA. - 8 UNC SQ. HEAD SQ. NECK CARRIAGE BOLT X 3-1/2" LG. C/W SQ. NUT	GTS-1307/1	-	6	6	6	6
82	SPRING WASHER for 1" DIA. BOLT	GTS-1301	-	6	6	6	6
83	LOCKNUT FOR 1" DIA. - 8 UNC BOLT	GTS-1302	-	6	6	6	6
84	TIE PAD 545	GTS-0527	TP545	2	2	2	2
85	TIE PAD 547	GTS-0527	TP547	2	2	2	2
86	TIE PAD 549	GTS-0527	TP549	3	3	3	3
87	TIE PAD 550	GTS-0527	TP550	4	4	4	4
88	TIE PAD 551	GTS-0527	TP551	4	4	4	4
89	TIE PAD 556	GTS-0527	TP556	46	46	46	46
	TIE PAD 556 (GENSTAR ONLY)	GTS-0527	TP556	23	23	23	23
90	TIE PAD 553	GTS-0527	TP553	-	-	-	-
	TIE PAD 553 (GENSTAR ONLY)	GTS-0527	TP553	23	23	23	23
91	TIE PAD 591	GTS-0527	TP591	1	1	1	1
	TIE PAD 591	GTS-0527	TP591	1	1	1	1
92	TIE PAD 592	GTS-0527	TP592	1	1	1	1
	TIE PAD 592 (GENSTAR ONLY)	GTS-0527	TP592	1	1	1	1
93	PANDROL CLIP - e2009	GTS-1322	-	131	131	131	131
94	INSULATOR - HD8-3855-PANDROL DWG. NO. 3855	-	-	102	102	102	102
95	TIE SCREW TYPE Ss8 (UNPOINTED) 24mm DIA. X 152mm LONG	GTS-1315	-	66	66	66	66
96	DOUBLE SPRING WASHER - TYPE FE6	GTS-1310	-	66	66	66	66

