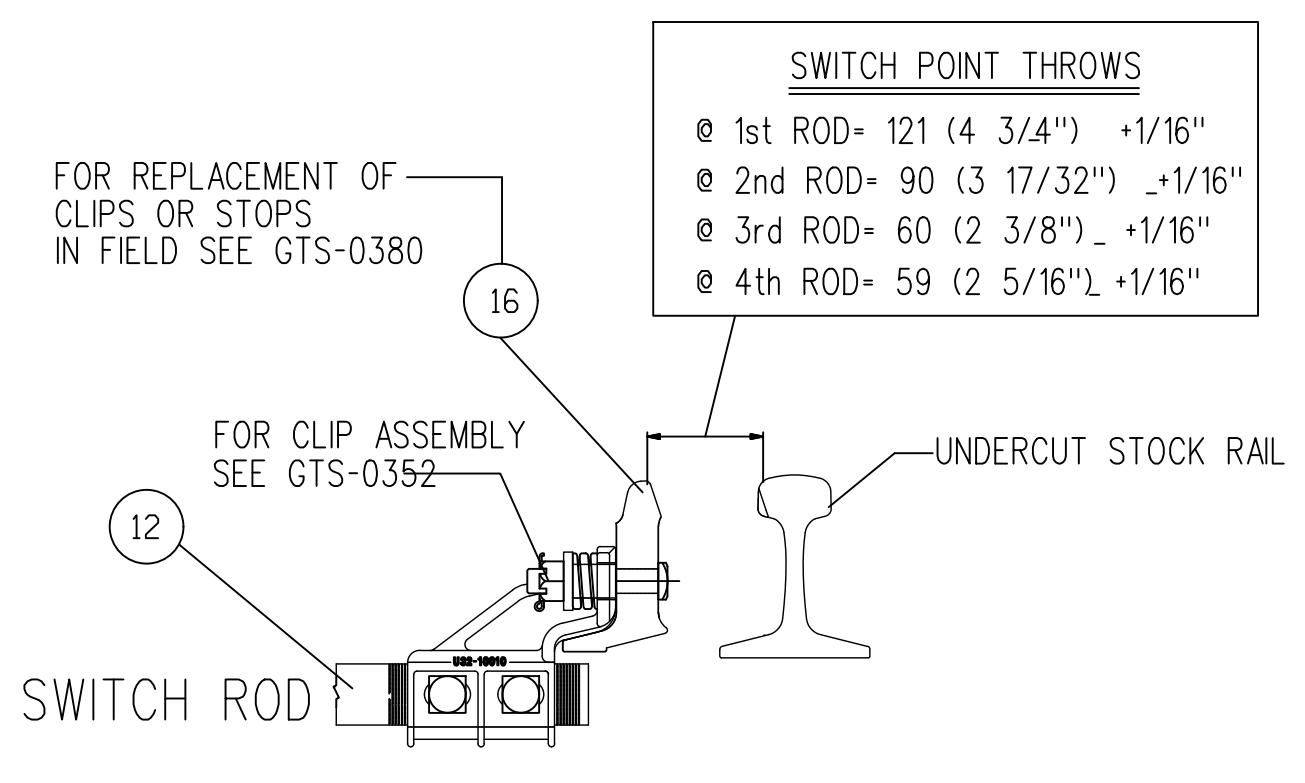
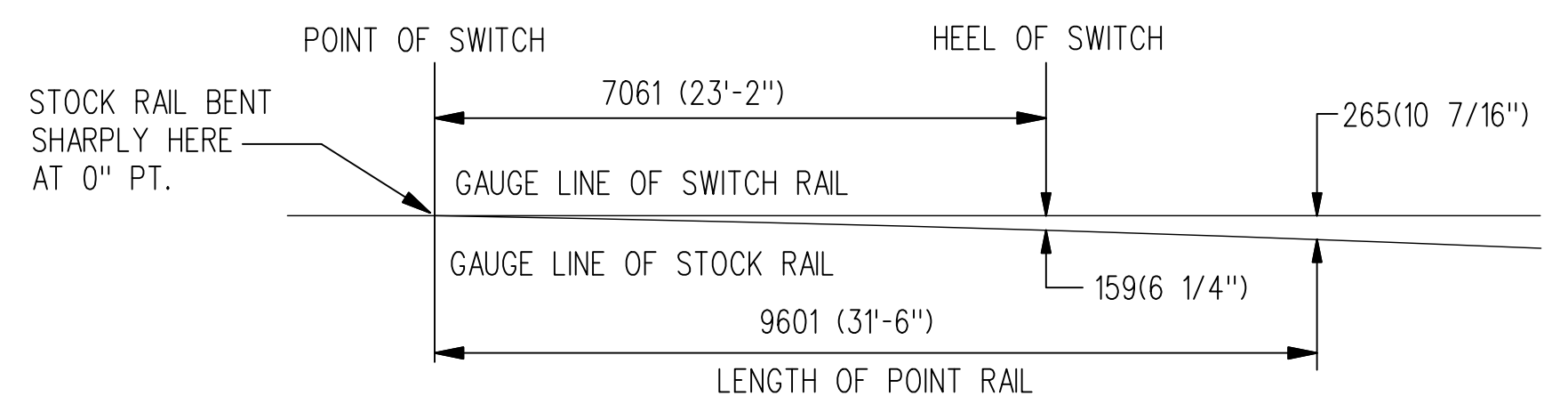


### TIE ARRANGEMENT & SPACING



### ROCKER CLIP ASSEMBLY

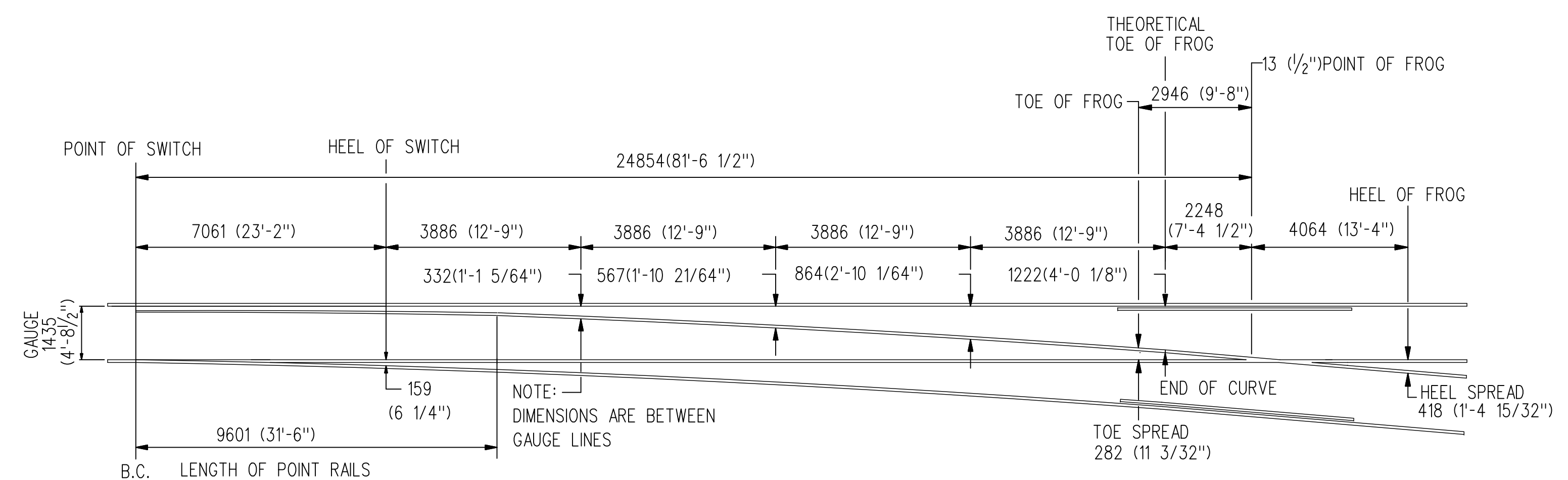


### STOCK RAIL BENDING DETAIL

| FROGS | RBM           | SPRING             | FLANGE BEARING |
|-------|---------------|--------------------|----------------|
| A     | 2946 (9'-8")  | 5210 (17'-1 1/8")  | 3556 (11'-8")  |
| B     | 4064 (13'-4") | 3606 (11'-10")     | 4064 (13'-4")  |
| C     | 7010 (23'-0") | 8816 (28'-11 1/8") | 7620 (25'-0")  |

### NOTES

- TURNOUT: TO BE INSTALLED AND MAINTAINED IN ACCORDANCE WITH THE LATEST ISSUE OF THE RM.
  - WHEN REFERRING TO POWER OPERATED TURNOUTS, DRAWING NUMBER MUST BE STATED AS A,B,C, OR D TO INDICATE:  
L-LEFT HAND TURNOUT P.O. MACHINE ON LEFT OR RIGHT - RBM FROG  
M-LEFT HAND TURNOUT P.O. MACHINE ON LEFT OR RIGHT - SPRING FROG  
R-RIGHT HAND TURNOUT P.O. MACHINE ON LEFT OR RIGHT - RBM FROG  
S-RIGHT HAND TURNOUT P.O. MACHINE ON LEFT OR RIGHT - SPRING FROG
  - FOR OTHER STANDARD TURNOUT COMBINATIONS SEE INDEX GTS-0000 SHEET 3 OF 3.
  - TURNOUT GEOMETRY, FOR TABLES OF DIMENSIONS AND OFFSETS SEE GTS-0002A NO. 10 ALL WELDED TURNOUTS.
- THIS PLAN SUPERSEDES PLAN OF SAME NUMBER DATED AUGUST '96



### OFFSET DIAGRAM

### TURNOUT DATA

FROG NO. 10

LENGTH OF SWITCH PT. 9601 (31'-6")

HEEL SPREAD 159 (6 1/4")

LEAD 24854 (81'-6 1/2")

P.S. TO H.F. 28461 (93'-4 1/2")

RBM

12306 (40'-4 1/2") STRAIGHT CLOSURE LENGTH

12342 (40'-5 29/32") CURVED CLOSURE LENGTH

SPRING

10042 (32'-11 3/8") STRAIGHT CLOSURE LENGTH

10078 (33'-0 25/32") CURVED CLOSURE LENGTH

FLANGE BEARING

11697 (38'-4 1/2") STRAIGHT CLOSURE LENGTH

11751 (38'-6 5/8") CURVED CLOSURE LENGTH

METRIC CONVERSION: 1 inch=25.4mm, 1 foot=304.8mm

|     |          |                                          |             |
|-----|----------|------------------------------------------|-------------|
| 1   | 18/07/27 | ADDED IMPERIAL TO METRIC CONVERSION NOTE |             |
| No. | Date     | Revision                                 | By Approved |

Standard

**NO. 10 TURNOUT-136 LB. RAIL**

**316" POWER OPERATED-SAMSON PT. SWITCH**

**UNIFORM RISER DESIGN-ALL WELDED**

**R.B.M. FROG-WOOD TIES**

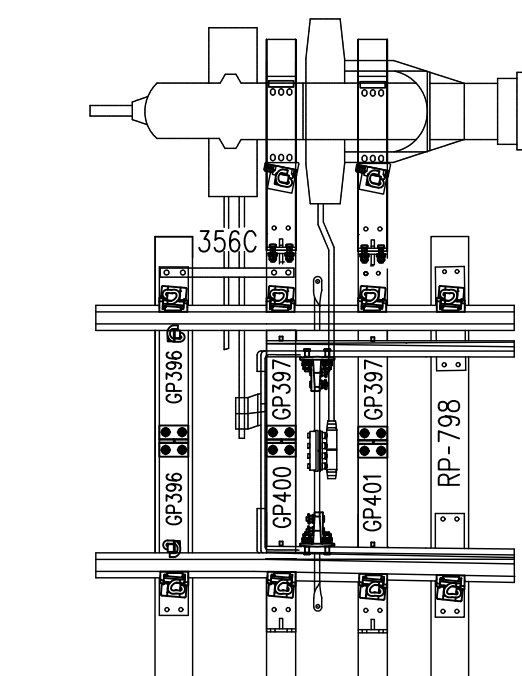
Drawn RL Checked JR Approved *[Signature]*

VF Engineering & Asset Management

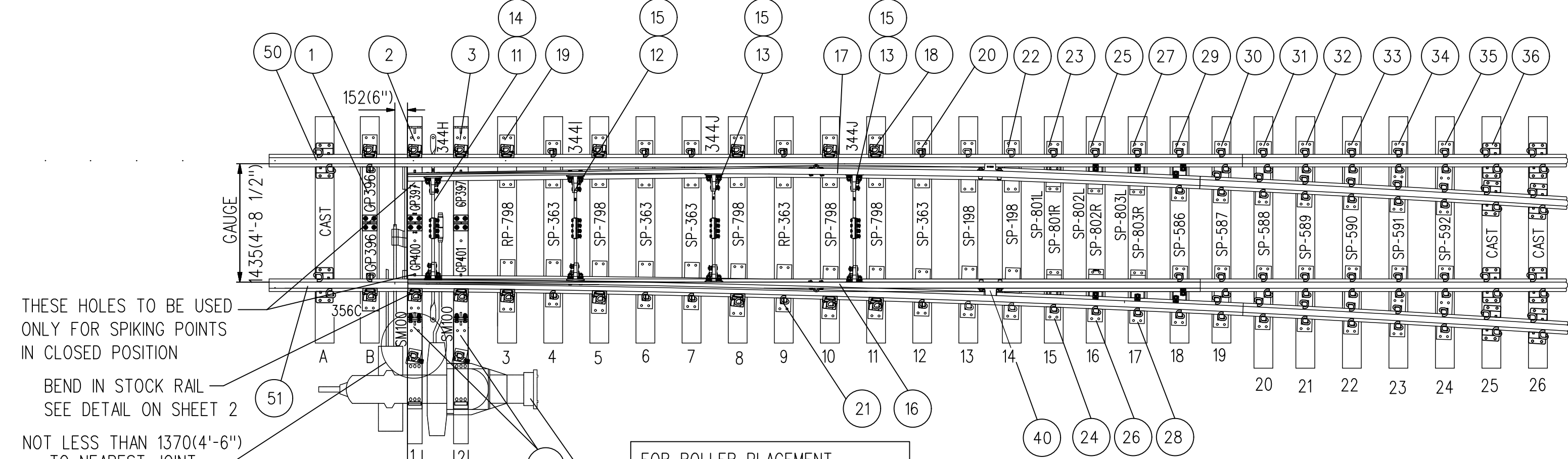


Date SEPT 15/2017 Plan Number GTS-0267 Rev 1

REFERENCE: TS-0267\_R9 Sheet 1 OF 2



DRAWING NO. GTS-0278R  
RIGHT HAND TURNOUT  
MACHINE MOUNTED ON LEFT



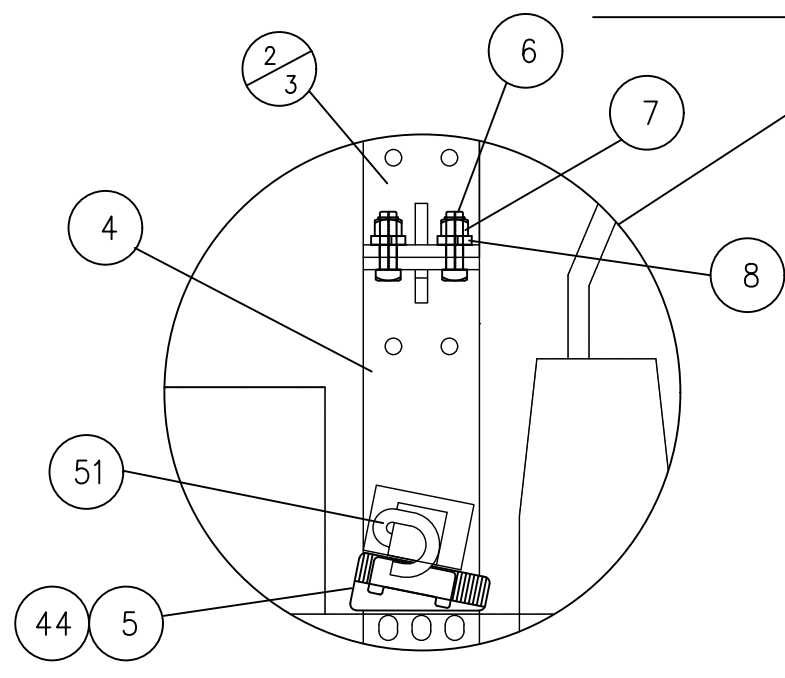
THESE HOLES TO BE USED ONLY FOR SPIKING POINTS IN CLOSED POSITION

BEND IN STOCK RAIL SEE DETAIL ON SHEET 2 NOT LESS THAN 1370(4'-6") TO NEAREST JOINT

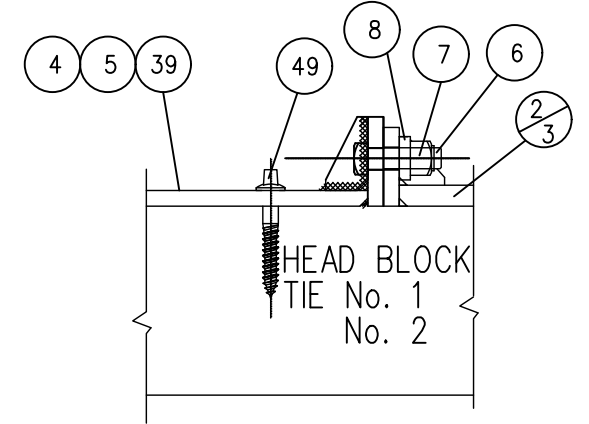
FOR ROLLER PLACEMENT AND CONFIGURATION SEE GTS-039D

SWITCH MACHINE AND OTHER ITEMS SHOWN IN DOTTED LINES TO BE SUPPLIED BY SIGNALS & COMMUNICATIONS.

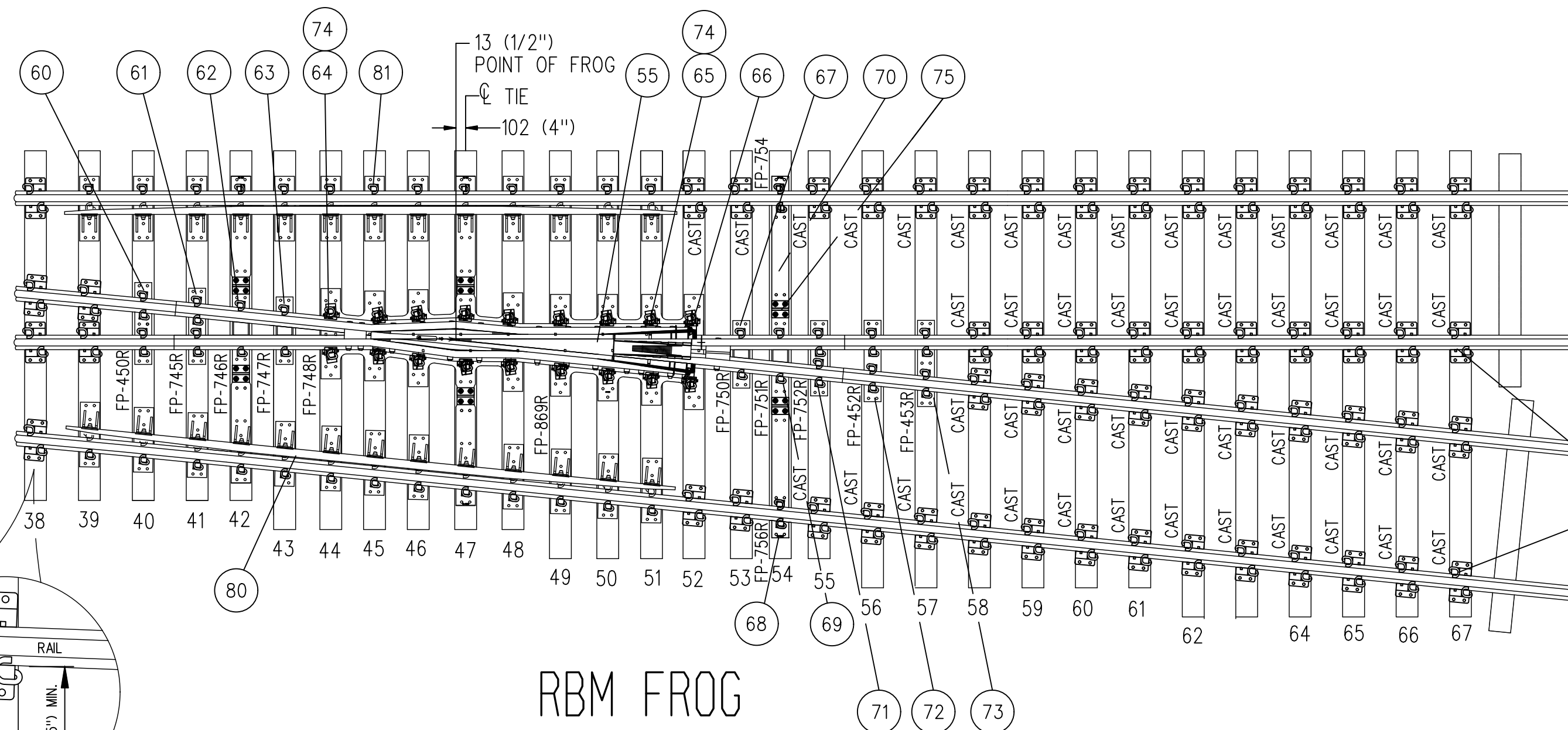
INSTALL HEAD BLOCK TIES NO. 1 & 2 ON SIDES TO ALLOW CLEARANCE FOR SWITCH ROD.



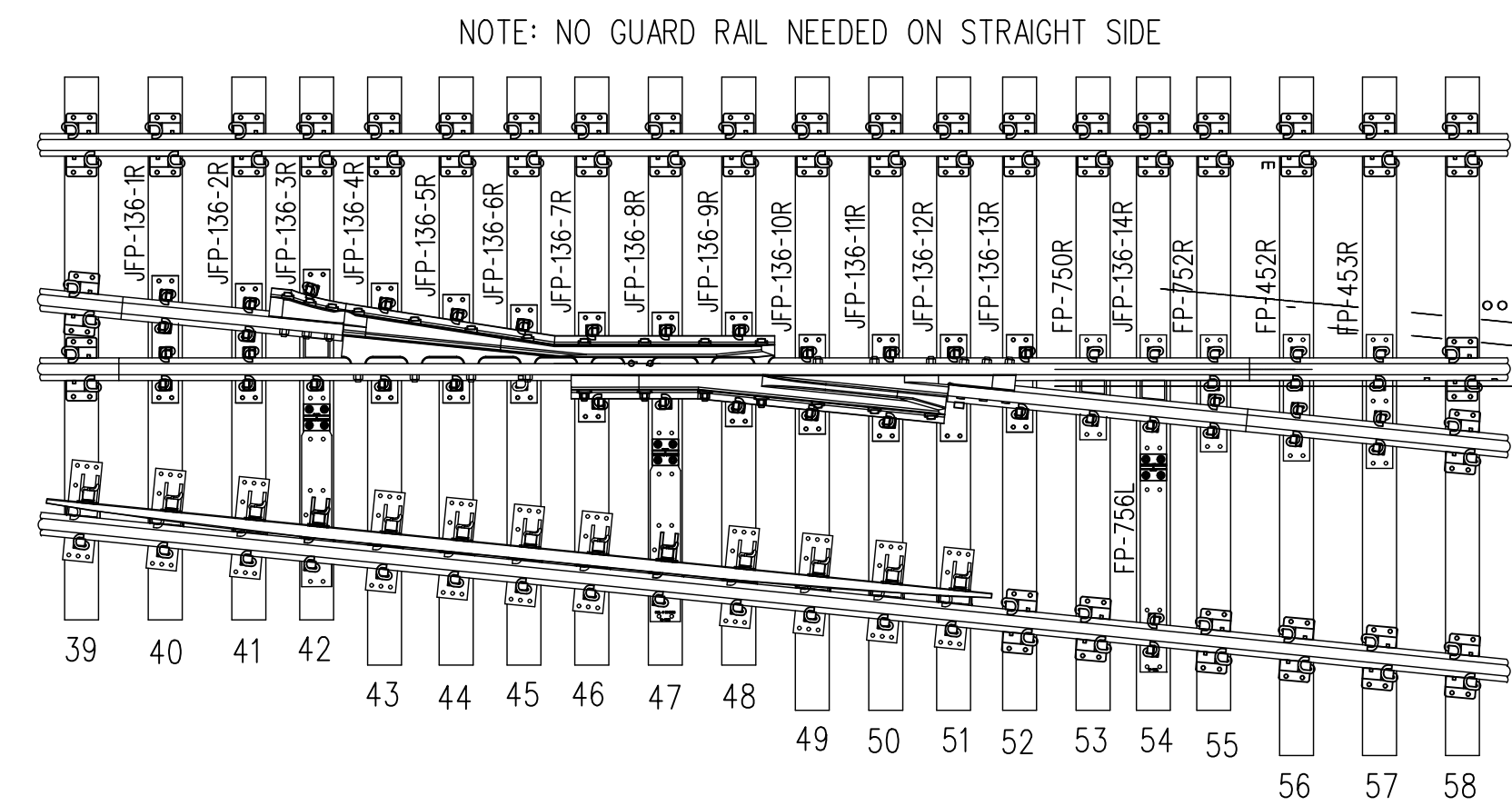
SWITCH MACHINE PLATE ASSEMBLY



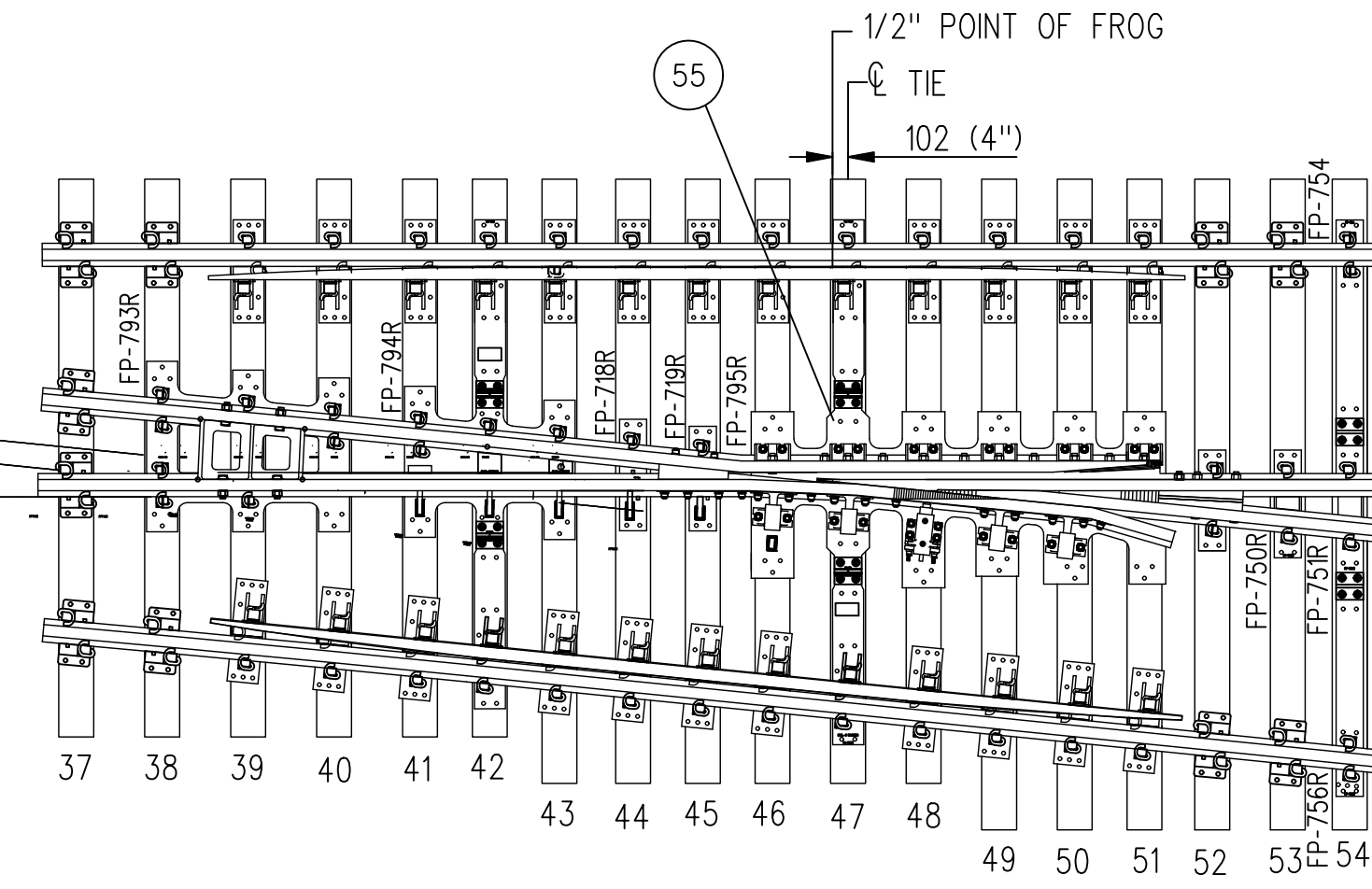
HEAD BLOCK TIE No. 1 No. 2



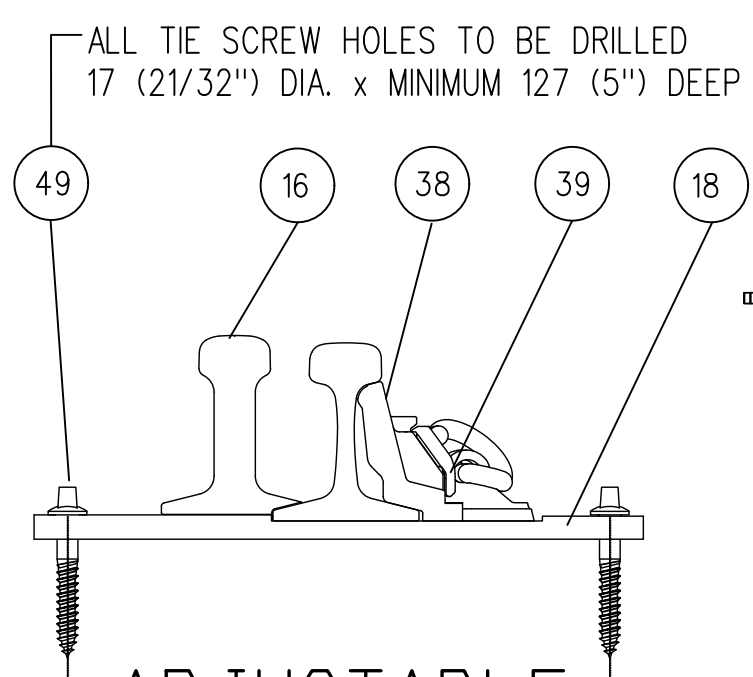
RBM FROG



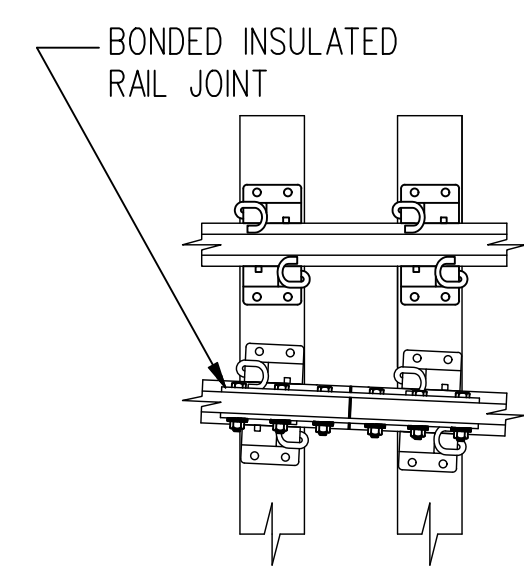
FLANGE BEARING FROG



SPRING FROG

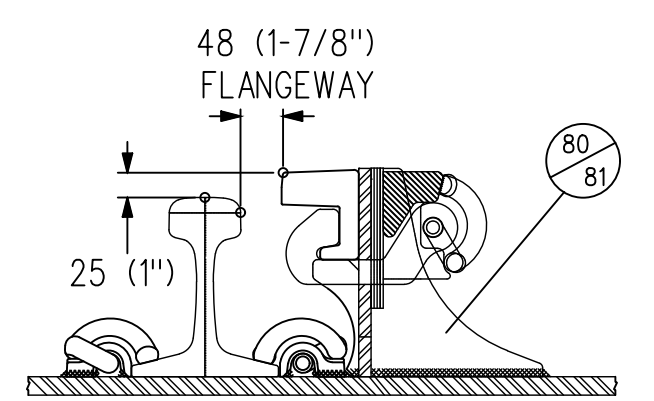


ADJUSTABLE RAIL BRACE ASSEMBLY

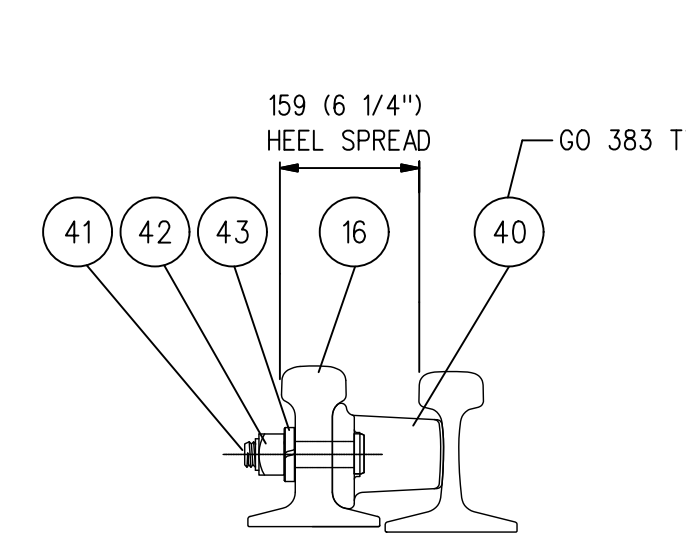


GENERAL ARRANGEMENT

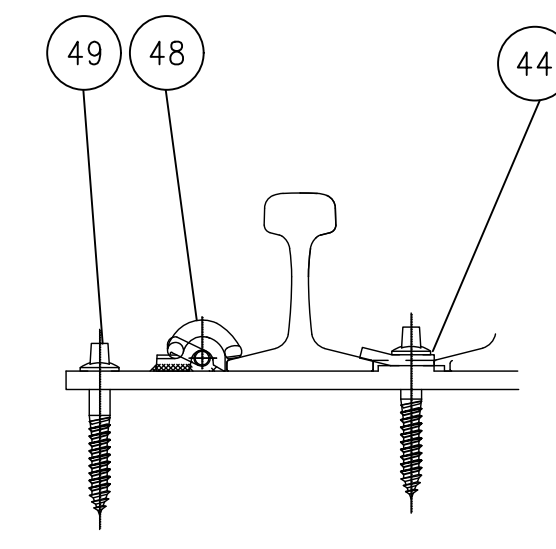
DRAWING NO. GTS-0267R  
RIGHT HAND TURNOUT  
MACHINE MOUNTED ON RIGHT



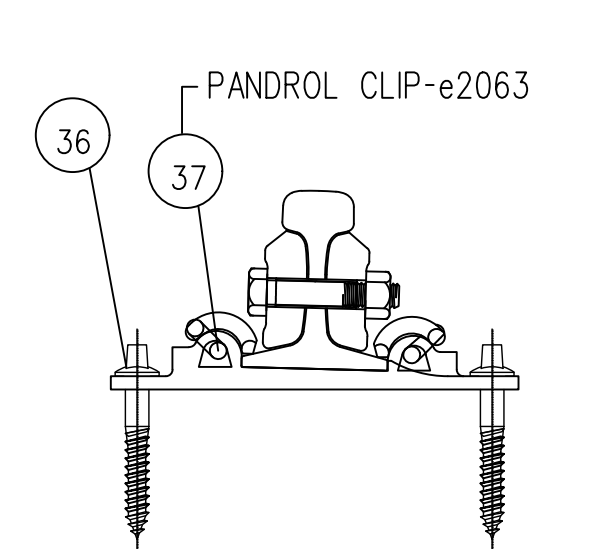
GUARD RAIL ASSEMBLY



HEEL BLOCK ASSEMBLY



HOLD-DOWN CLIP ASSEMBLY



BONDED INSULATED RAIL JOINT

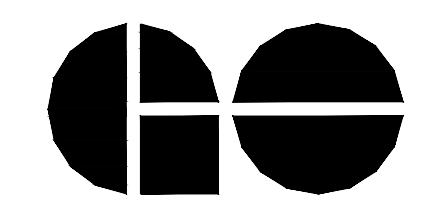
NOTE: NO GUARD RAIL NEEDED ON STRAIGHT SIDE

METRIC CONVERSION: 1 inch=25.4mm, 1 foot=304.8mm

|     |          |                                          |    |          |
|-----|----------|------------------------------------------|----|----------|
| No. | Date     | Revision                                 | By | Approved |
| 1   | 18/07/27 | ADDED IMPERIAL TO METRIC CONVERSION NOTE |    |          |

Standard NO. 10 TURNOUT-136 LB. RAIL  
31/6" POWER OPERATED-SAMSON PT. SWITCH  
UNIFORM RISER DESIGN-ALL WELDED  
R.B.M. FROG-WOOD TIES

Drawn RL Checked JR Approved VP Engineering & Asset Management



Date SEPT 15/2017 Plan Number GTS-0267 Rev 1

REFERENCE: TS-0267\_R9 Sheet 2 OF 2

**BILL OF MATERIALS FOR GTS-0267**

| ITEM                            | DESCRIPTION                                                 | MARK NUMBER     | STANDARD DRAWING | QUANTITY |     |     |     |     |     |     |     |
|---------------------------------|-------------------------------------------------------------|-----------------|------------------|----------|-----|-----|-----|-----|-----|-----|-----|
|                                 |                                                             |                 |                  | L        | M   | N   | O   | R   | S   | T   | U   |
| <b>SWITCH PACK</b>              |                                                             |                 |                  |          |     |     |     |     |     |     |     |
| 1                               | 1st. GAUGE PLATE ASSEMBLY                                   | GP396/GP396     | GTS-0523         | 1        | 1   | 1   | 1   | 1   | 1   | 1   | 1   |
| 2                               | 2nd. GAUGE PLATE ASSEMBLY                                   | GP398/GP397     | GTS-0523         | 1        | 1   | 1   | 1   | 1   | 1   | 1   | 1   |
| 3                               | 3rd. GAUGE PLATE ASSEMBLY                                   | GP397/GP400     | GTS-0523         | -        | -   | -   | -   | 1   | 1   | 1   | 1   |
| 4                               | SWITCH MACHINE PLATE                                        | SM100           | GTS-0520         | 2        | 2   | 2   | 2   | 2   | 2   | 2   | 2   |
| 5                               | SWITCH MACHINE PLATE CLAMP                                  | -               | GTS-0520         | 2        | 2   | 2   | 2   | 2   | 2   | 2   | 2   |
| 6                               | 1" DIA. - 8 UNC SQ. HD. BOLT X 3-1/2" LG. C/W SQ. NUT       | -               | GTS-1309/13      | 4        | 4   | 4   | 4   | 4   | 4   | 4   | 4   |
| 7                               | LOCKNUT FOR 1" DIA. - 8 UNC BOLT                            | -               | GTS-1302         | 4        | 4   | 4   | 4   | 4   | 4   | 4   | 4   |
| 8                               | SPRING WASHER for 1" DIA. BOLT                              | -               | GTS-1301         | 4        | 4   | 4   | 4   | 4   | 4   | 4   | 4   |
| 9                               | MILD STEEL STRAP                                            | 356C            | GTS-0356C        | 1        | 1   | 1   | 1   | 1   | 1   | 1   | 1   |
| 10                              | MILD STEEL STRAP                                            | 356F            | GTS-0356F        | 1        | 1   | 1   | 1   | 1   | 1   | 1   | 1   |
| 11                              | SWITCH ROD                                                  | 344H            | GTS-0344H        | 1        | 1   | 1   | 1   | 1   | 1   | 1   | 1   |
| 12                              | SWITCH ROD                                                  | 344I            | GTS-0344I        | 1        | 1   | 1   | 1   | 1   | 1   | 1   | 1   |
| 13                              | SWITCH ROD                                                  | 344J            | GTS-0344J        | 2        | 2   | 2   | 2   | 2   | 2   | 2   | 2   |
| 14                              | ROCKER CLIP ASSEMBLY                                        | 352L            | GTS-0352L        | 2        | 2   | 2   | 2   | 2   | 2   | 2   | 2   |
| 15                              | ROCKER CLIP ASSEMBLY                                        | 352M            | GTS-0352M        | 6        | 6   | 6   | 6   | 6   | 6   | 6   | 6   |
| 16                              | RIGHT SAMSON POINT RAIL- THICK WEB                          | -               | GTS-0380         | -        | -   | -   | -   | 1   | 1   | 1   | 1   |
| 17                              | LEFT SAMSON POINT RAIL- THICK WEB                           | -               | GTS-0380         | 1        | 1   | 1   | 1   | -   | -   | -   | -   |
| 18                              | SWITCH PLATE - LV/CLAMPTITE BRACE                           | SP798           | GTS-0508         | 8        | 8   | 8   | 8   | 8   | 8   | 8   | 8   |
| 19                              | ROLLER PLATE - LV/CLAMPTITE BRACE                           | RP798           | GTS-0508         | 2        | 2   | 2   | 2   | 2   | 2   | 2   | 2   |
| 20                              | SWITCH PLATE                                                | SP363           | GTS-0530         | 8        | 8   | 8   | 8   | 8   | 8   | 8   | 8   |
| 21                              | ROLLER PLATE                                                | RP363           | GTS-0530         | 2        | 2   | 2   | 2   | 2   | 2   | 2   | 2   |
| 22                              | SWITCH PLATE                                                | SP198           | GTS-0530         | 4        | 4   | 4   | 4   | 4   | 4   | 4   | 4   |
| 23                              | SWITCH PLATE (LEFT HAND)                                    | SP801L          | GTS-0586/2       | 1        | 1   | 1   | 1   | 1   | 1   | 1   | 1   |
| 24                              | SWITCH PLATE (RIGHT HAND)                                   | SP801R          | GTS-0586/1       | 1        | 1   | 1   | 1   | 1   | 1   | 1   | 1   |
| 25                              | SWITCH PLATE (LEFT HAND)                                    | SP802L          | GTS-0586/4       | 1        | 1   | 1   | 1   | 1   | 1   | 1   | 1   |
| 26                              | SWITCH PLATE (RIGHT HAND)                                   | SP802R          | GTS-0586/3       | 1        | 1   | 1   | 1   | 1   | 1   | 1   | 1   |
| 27                              | SWITCH PLATE (LEFT HAND)                                    | SP803L          | GTS-0586/4       | 1        | 1   | 1   | 1   | 1   | 1   | 1   | 1   |
| 28                              | SWITCH PLATE (RIGHT HAND)                                   | SP803R          | GTS-0586/3       | 1        | 1   | 1   | 1   | 1   | 1   | 1   | 1   |
| 29                              | SWITCH PLATE (UNIVERSAL)                                    | SP586           | GTS-0560/1       | 2        | 2   | 2   | 2   | 2   | 2   | 2   | 2   |
| 30                              | SWITCH PLATE (UNIVERSAL)                                    | SP587           | GTS-0560/2       | 2        | 2   | 2   | 2   | 2   | 2   | 2   | 2   |
| 31                              | SWITCH PLATE (UNIVERSAL)                                    | SP588           | GTS-0560/2       | 2        | 2   | 2   | 2   | 2   | 2   | 2   | 2   |
| 32                              | SWITCH PLATE (UNIVERSAL)                                    | SP589           | GTS-0560/2       | 2        | 2   | 2   | 2   | 2   | 2   | 2   | 2   |
| 33                              | SWITCH PLATE (UNIVERSAL)                                    | SP590           | GTS-0560/2       | 2        | 2   | 2   | 2   | 2   | 2   | 2   | 2   |
| 34                              | SWITCH PLATE (UNIVERSAL)                                    | SP591           | GTS-0560/2       | 2        | 2   | 2   | 2   | 2   | 2   | 2   | 2   |
| 35                              | SWITCH PLATE (UNIVERSAL)                                    | SP592           | GTS-0560/2       | 2        | 2   | 2   | 2   | 2   | 2   | 2   | 2   |
| 36                              | CAST TIE PLATE                                              | CAST            | GTS-0501         | 74       | 74  | 74  | 74  | 74  | 74  | 74  | 74  |
| 37                              | PANDROL CLIP - e2063 (for INSULATED RAIL JOINTS)            | e2063           | GTS-1322         | 8        | 8   | 8   | 8   | 8   | 8   | 8   | 8   |
| 38                              | BOLTLESS ADJUSTABLE LV/CLAMPTITE BRACE                      | -               | GTS-0354         | 16       | 16  | 16  | 16  | 16  | 16  | 16  | 16  |
| 39                              | SERRATED WASHER FOR BOLTLESS LV/CLAMPTITE BRACE             | -               | GTS-0354         | 18       | 18  | 18  | 18  | 18  | 18  | 18  | 18  |
| <b>SWITCH PACK continued</b>    |                                                             |                 |                  |          |     |     |     |     |     |     |     |
| 40                              | HEEL BLOCK - SYMMETRICAL FOR THICK WEB POINT                | CN383-TW        | GTS-0383         | 2        | 2   | 2   | 2   | 2   | 2   | 2   | 2   |
| 41                              | BOLT, 1 1/8" DIA X 5-1/2" LONG, 7 UNC C/W NUT               | TS1308/10       | GTS-1308         | 4        | 4   | 4   | 4   | 4   | 4   | 4   | 4   |
| 42                              | LOCKNUT FOR 1-1/8" DIA. - 7 UNC BOLT                        | -               | GTS-1302         | 4        | 4   | 4   | 4   | 4   | 4   | 4   | 4   |
| 43                              | SPRING WASHER for 1-1/8" DIA BOLT                           | -               | GTS-1301         | 4        | 4   | 4   | 4   | 4   | 4   | 4   | 4   |
| 44                              | HOLD DOWN CLIP                                              | FS156           | GTS-1334         | 8        | 8   | 8   | 8   | 8   | 8   | 8   | 8   |
| 48                              | PANDROL CLIP - e2055                                        | e2055           | GTS-1322         | 170      | 170 | 170 | 170 | 170 | 170 | 170 | 170 |
| 49                              | SCREW SPIKE - POINTED                                       | COMMON STANDARD | GTS-1315         | 432      | 432 | 432 | 432 | 432 | 432 | 432 | 432 |
| 50                              | UNDERCUT STOCK RAIL - LEFT HAND - 136 LB. R.E. 39'- 0" LG.  | 1105K           | GTS-1105K        | -        | -   | -   | -   | 1   | 1   | 1   | 1   |
| 50                              | UNDERCUT STOCK RAIL - RIGHT HAND - 136 LB. R.E. 39'- 0" LG. | 1105O           | GTS-1105O        | 1        | 1   | 1   | 1   | -   | -   | -   | -   |
| 51                              | BENT UNDERCUT STOCK RAIL - R/H - 136 LB. R.E. 39'- 0" LG.   | 1109DD          | GTS-1109DD       | -        | -   | -   | -   | 1   | 1   | 1   | 1   |
| 51                              | BENT UNDERCUT STOCK RAIL - L/H - 136 LB. R.E. 39'- 0" LG.   | 1109EE          | GTS-1109EE       | 1        | 1   | 1   | 1   | -   | -   | -   | -   |
| <b>FROG</b>                     |                                                             |                 |                  |          |     |     |     |     |     |     |     |
| 55                              | #10-136 LB. RAIL BOUND MANGANESE STEEL FROG 23'             | -               | GTS-0885         | 1        |     |     |     | 1   |     |     |     |
|                                 | MAINTENANCE LENGTH FROG - CUT TO SHORTEST LENGTH            |                 |                  |          |     |     |     |     |     |     |     |
|                                 | SPRING FROG (LEFT HAND)                                     | C35-10874       |                  | 1        |     |     |     |     |     |     |     |
|                                 | SPRING FROG (RIGHT HAND)                                    | C35-10875       |                  |          |     |     |     | 1   |     |     |     |
|                                 | FLANGE BEARING FROG (LEFT HAND)                             | C33-10802       |                  |          | 1   |     |     |     |     |     |     |
|                                 | INCLUDES 19'-6" GUARD RAIL AND FROG PLATES                  | A50-60012       | A30-60018        |          |     |     |     |     |     |     |     |
|                                 | NO GUARD RAIL NEEDED ON THE STRAIGHT SIDE                   |                 |                  |          |     |     |     |     |     |     |     |
|                                 | FLANGE BEARING FROG (RIGHT HAND)                            | C33-10803       |                  |          |     |     |     |     | 1   |     |     |
|                                 | INCLUDES 19'-6" GUARD RAIL AND FROG PLATES                  | A50-60013       | A30-60019        |          |     |     |     |     |     |     |     |
|                                 | NO GUARD RAIL NEEDED ON THE STRAIGHT SIDE                   |                 |                  |          |     |     |     |     |     |     |     |
|                                 | SSGM FROG #10-136 LB.                                       | C05-10801       |                  |          |     |     |     | 1   |     |     | 1   |
| <b>FROG PACK-RBM</b>            |                                                             |                 |                  |          |     |     |     |     |     |     |     |
| 60                              | FROG PLATE (LEFT HAND)                                      | FP450L          | GTS-0547         | 1        | -   | -   | -   | -   | -   | -   | -   |
|                                 | FROG PLATE (RIGHT HAND)                                     | FP450R          | GTS-0547         | -        | -   | -   | -   | 1   | -   | -   | -   |
| 61                              | FROG PLATE (LEFT HAND)                                      | FP745L          | GTS-0556/2       | 1        | -   | -   | -   | -   | -   | -   | -   |
|                                 | FROG PLATE (RIGHT HAND)                                     | FP745R          | GTS-0556/1       | -        | -   | -   | -   | 1   | -   | -   | -   |
| 62                              | FROG PLATE (LEFT HAND)                                      | FP746L          | GTS-0670/2       | 1        | -   | -   | -   | -   | -   | -   | -   |
|                                 | FROG PLATE (RIGHT HAND)                                     | FP746R          | GTS-0670/1       | -        | -   | -   | -   | 1   | -   | -   | -   |
| 63                              | FROG PLATE (LEFT HAND)                                      | FP747L          | GTS-0615/2       | 1        | -   | -   | -   | -   | -   | -   | -   |
|                                 | FROG PLATE (RIGHT HAND)                                     | FP747R          | GTS-0615/1       | -        | -   | -   | -   | 1   | -   | -   | -   |
| 64                              | FROG PLATE RBM (LEFT HAND)                                  | FP748L          | GTS-0605         | 1        | -   | -   | -   | -   | -   | -   | -   |
|                                 | FROG PLATE RBM (RIGHT HAND)                                 | FP748R          | GTS-0605         | -        | -   | -   | -   | 1   | -   | -   | -   |
| 65                              | FROG PLATE RBM (LEFT HAND)                                  | FP869L          | GTS-0606         | 1        | -   | -   | -   | -   | -   | -   | -   |
|                                 | FROG PLATE RBM (RIGHT HAND)                                 | FP869R          | GTS-0606         | -        | -   | -   | -   | 1   | -   | -   | -   |
| 67                              | FROG PLATE (LEFT HAND)                                      | FP750L          | GTS-0615/2       | 1        | -   | -   | -   | -   | -   | -   | -   |
|                                 | FROG PLATE (RIGHT HAND)                                     | FP750R          | GTS-0615/1       | -        | -   | -   | -   | 1   | -   | -   | -   |
| 68                              | FROG PLATE (LEFT HAND)                                      | FP756L          | GTS-0662/2       | 1        | -   | -   | -   | -   | -   | -   | -   |
|                                 | FROG PLATE (RIGHT HAND)                                     | FP756R          | GTS-0662/1       | -        | -   | -   | -   | 1   | -   | -   | -   |
| 69                              | FROG PLATE (LEFT HAND)                                      | FP751L          | GTS-0670         | 1        | -   | -   | -   | -   | -   | -   | -   |
|                                 | FROG PLATE (RIGHT HAND)                                     | FP751R          | GTS-0670/1       | -        | -   | -   | -   | 1   | -   | -   | -   |
| 70                              | FROG PLATE (UNIVERSAL)                                      | FP754           | GTS-0662/1       | 1        | -   | -   | -   | 1   | -   | -   | -   |
| 71                              | FROG PLATE (LEFT HAND)                                      | FP752L          | GTS-0556/2       | 1        | -   | -   | -   | -   | -   | -   | -   |
|                                 | FROG PLATE (RIGHT HAND)                                     | FP752R          | GTS-0556/1       | -        | -   | -   | -   | 1   | -   | -   | -   |
| 72                              | FROG PLATE (LEFT HAND)                                      | FP452L          | GTS-0546         | 1        | -   | -   | -   | -   | -   | -   | -   |
|                                 | FROG PLATE (RIGHT HAND)                                     | FP452R          | GTS-0546         | -        | -   | -   | -   | 1   | -   | -   | -   |
| 73                              | FROG PLATE (LEFT HAND)                                      | FP453L          | GTS-0547         | 1        | -   | -   | -   | -   | -   | -   | -   |
|                                 | FROG PLATE (RIGHT HAND)                                     | FP453R          | GTS-0547         | -        | -   | -   | -   | 1   | -   | -   | -   |
| <b>FROG PACK-SPRING</b>         |                                                             |                 |                  |          |     |     |     |     |     |     |     |
|                                 | FROG PLATE (LEFT HAND) included in new frog                 | FP793L          |                  | -        | 1   | -   | -   | -   | -   | -   | -   |
|                                 | FROG PLATE (RIGHT HAND) included in new frog                | FP793R          |                  | -        | -   | -   | -   | 1   | -   | -   | -   |
|                                 | FROG PLATE (LEFT HAND) included in new frog                 | FP794L          |                  | -        | 1   | -   | -   | -   | -   | -   | -   |
|                                 | FROG PLATE (RIGHT HAND) included in new frog                | FP794R          |                  | -        | -   | -   | -   | 1   | -   | -   | -   |
|                                 | FROG PLATE (LEFT HAND) included in new frog                 | FP718L          |                  | -        | 1   | -   | -   | -   | -   | -   | -   |
|                                 | FROG PLATE (RIGHT HAND) included in new frog                | FP718R          |                  | -        | -   | -   | -   | 1   | -   | -   | -   |
|                                 | FROG PLATE (LEFT HAND) included in new frog                 | FP719L          |                  | -        | 1   | -   | -   | -   | -   | -   | -   |
|                                 | FROG PLATE (RIGHT HAND) included in new frog                | FP719R          |                  | -        | -   | -   | -   | 1   | -   | -   | -   |
|                                 | FROG PLATE (LEFT HAND) included in new frog                 | FP795L          |                  | -        | 1   | -   | -   | -   | -   | -   | -   |
|                                 | FROG PLATE (RIGHT HAND) included in new frog                | FP795R          |                  | -        | -   | -   | -   | 1   | -   | -   | -   |
| 67                              | FROG PLATE (LEFT HAND) included in new frog                 | FP750L          | GTS-0615/2       | -        | 1   | -   | -   | -   | -   | -   | -   |
|                                 | FROG PLATE (RIGHT HAND) included in new frog                | FP750R          | GTS-0615/1       | -        | -   | -   | -   | 1   | -   | -   | -   |
| 69                              | FROG PLATE (LEFT HAND) included in new frog                 | FP751L          | GTS-0670         | -        | 1   | -   | -   | -   | -   | -   | -   |
|                                 | FROG PLATE (RIGHT HAND) included in new frog                | FP751R          | GTS-0670/1       | -        | -   | -   | -   | 1   | -   | -   | -   |
| 68                              | FROG PLATE (LEFT HAND) included in new frog                 | FP756L          | GTS-0662/2       | -        | 1   | -   | -   | -   | -   | -   | -   |
|                                 | FROG PLATE (RIGHT HAND) included in new frog                | FP756R          | GTS-0662/1       | -        | -   | -   | -   | 1   | -   | -   | -   |
| 70                              | FROG PLATE SPRING (UNIVERSAL) included in new frog          | FP754           | GTS-0662/1       | -        | 1   | -   | -   | -   | 1   | -   | -   |
| 71                              | FROG PLATE (LEFT HAND)                                      | FP752L          | GTS-0556/2       | -        | 1   | -   | -   | -   | -   | -   | -   |
|                                 | FROG PLATE (RIGHT HAND)                                     | FP752R          | GTS-0556/1       | -        | -   | -   | -   | 1   | -   | -   | -   |
| 72                              | FROG PLATE (LEFT HAND)                                      | FP452L          | GTS-0546         | -        | 1   | -   | -   | -   | -   | -   | -   |
|                                 | FROG PLATE (RIGHT HAND)                                     | FP452R          | GTS-0546         | -        | -   | -   | -   | 1   | -   | -   | -   |
| 73                              | FROG PLATE (LEFT HAND)                                      | FP453L          | GTS-0547         | -        | 1   | -   | -   | -   | -   | -   | -   |
|                                 | FROG PLATE (RIGHT HAND)                                     | FP453R          | GTS-0547         | -        | -   | -   | -   | 1   | -   | -   | -   |
| <b>FROG PACK-FLANGE BEARING</b> |                                                             |                 |                  |          |     |     |     |     |     |     |     |
|                                 | FROG PLATE (LEFT HAND) included in new frog                 | JFP-136-1L      |                  | -        | -   | 1   | -   | -   | -   | -   | -   |
|                                 | FROG PLATE (RIGHT HAND) included in new frog                | JFP-136-1R      |                  | -        | -   | -   | -   | -   | -   | 1   | -   |
|                                 | FROG PLATE (LEFT HAND) included in new frog                 | JFP-136-2L      |                  | -        | -   | 1   | -   | -   | -   | -   | -   |
|                                 | FROG PLATE (RIGHT HAND) included in new frog                | JFP-136-2R      |                  | -        | -   | -   | -   | -   | -   | 1   | -   |
|                                 | FROG PLATE (LEFT HAND) included in new frog                 | JFP-136-3L      |                  | -        | -   | 1   | -   | -   | -   | -   | -   |
|                                 | FROG PLATE (RIGHT HAND) included in new frog                | JFP-136-3R      |                  | -        | -   | -   | -   | -   | -   | 1   | -   |
|                                 | FROG PLATE (LEFT HAND) included in new frog                 | JFP-136-4L      |                  | -        | -   | 1   | -   | -   | -   | -   | -   |

**BILL OF MATERIALS FOR GTS-0267**

| ITEM                    | DESCRIPTION                                                            | MARK NUMBER     | STANDARD DRAWING | QUANTITY |     |     |     |     |     |     |     |     |     |  |
|-------------------------|------------------------------------------------------------------------|-----------------|------------------|----------|-----|-----|-----|-----|-----|-----|-----|-----|-----|--|
|                         |                                                                        |                 |                  | L        | M   | N   | O   | R   | S   | T   | U   |     |     |  |
|                         | FROG PLATE (RIGHT HAND) <i>included in new frog</i>                    | JFP-136-13R     |                  | -        | -   | -   | -   | -   | -   | -   | -   | 1   | -   |  |
|                         | FROG PLATE (LEFT HAND) <i>included in new frog</i>                     | JFP-136-14L     |                  | -        | -   | 1   | -   | -   | -   | -   | -   | -   | -   |  |
|                         | FROG PLATE (RIGHT HAND) <i>included in new frog</i>                    | JFP-136-14R     |                  | -        | -   | -   | -   | -   | -   | -   | -   | 1   | -   |  |
| 67                      | FROG PLATE (LEFT HAND) <i>included in new frog</i>                     | FP-750L         | GTS-0615/2       | -        | -   | 1   | -   | -   | -   | -   | -   | -   | -   |  |
|                         | FROG PLATE (RIGHT HAND) <i>included in new frog</i>                    | FP-750R         | GTS-0615/1       | -        | -   | -   | -   | -   | -   | -   | -   | 1   | -   |  |
| 68                      | FROG PLATE (LEFT HAND) <i>included in new frog</i>                     | FP-756L         | GTS-0662/2       | -        | -   | -   | -   | -   | -   | -   | -   | 1   | -   |  |
|                         | FROG PLATE (RIGHT HAND) <i>included in new frog</i>                    | FP-756R         | GTS-0662/1       | -        | -   | 1   | -   | -   | -   | -   | -   | -   | -   |  |
| 71                      | FROG PLATE (LEFT HAND) <i>included in new frog</i>                     | FP-752L         | GTS-0556/2       | -        | -   | 1   | -   | -   | -   | -   | -   | -   | -   |  |
|                         | FROG PLATE (RIGHT HAND) <i>included in new frog</i>                    | FP-752R         | GTS-0556/1       | -        | -   | -   | -   | -   | -   | -   | -   | 1   | -   |  |
| 72                      | FROG PLATE (LEFT HAND) <i>included in new frog</i>                     | FP-452L         | GTS-0546         | -        | -   | 1   | -   | -   | -   | -   | -   | -   | -   |  |
|                         | FROG PLATE (RIGHT HAND) <i>included in new frog</i>                    | FP-452R         | GTS-0546         | -        | -   | -   | -   | -   | -   | -   | -   | 1   | -   |  |
| 73                      | FROG PLATE (LEFT HAND) <i>included in new frog</i>                     | FP-453L         | GTS-0547         | -        | -   | 1   | -   | -   | -   | -   | -   | -   | -   |  |
|                         | FROG PLATE (RIGHT HAND) <i>included in new frog</i>                    | FP-453R         | GTS-0547         | -        | -   | -   | -   | -   | -   | -   | -   | 1   | -   |  |
| <b>FROG PACK-SSGM</b>   |                                                                        |                 |                  |          |     |     |     |     |     |     |     |     |     |  |
| 60                      | FROG PLATE (LEFT HAND) <i>included in new frog</i>                     | FP-450L         | GTS-0547         | -        | -   | -   | 1   | -   | -   | -   | -   | -   | -   |  |
|                         | FROG PLATE (RIGHT HAND) <i>included in new frog</i>                    | FP-450R         | GTS-0547         | -        | -   | -   | -   | -   | -   | -   | -   | -   | 1   |  |
| 61                      | FROG PLATE (LEFT HAND) <i>included in new frog</i>                     | FP-745L         | GTS-0556/2       | -        | -   | -   | 1   | -   | -   | -   | -   | -   | -   |  |
|                         | FROG PLATE (RIGHT HAND) <i>included in new frog</i>                    | FP-745R         | GTS-0556/1       | -        | -   | -   | -   | -   | -   | -   | -   | 1   | -   |  |
|                         | FROG PLATE (LEFT HAND) <i>included in new frog</i>                     | FP-900L         |                  | -        | -   | -   | 1   | -   | -   | -   | -   | -   | -   |  |
|                         | FROG PLATE (RIGHT HAND) <i>included in new frog</i>                    | FP-900R         |                  | -        | -   | -   | -   | -   | -   | -   | -   | 1   | -   |  |
| 63                      | FROG PLATE (LEFT HAND) <i>included in new frog</i>                     | FP-747L         | GTS-0615/2       | -        | -   | -   | 1   | -   | -   | -   | -   | -   | -   |  |
|                         | FROG PLATE (RIGHT HAND) <i>included in new frog</i>                    | FP-747R         | GTS-0615/1       | -        | -   | -   | -   | -   | -   | -   | -   | 1   | -   |  |
|                         | FROG PLATE (LEFT HAND) <i>included in new frog</i>                     | FP-901L         |                  | -        | -   | -   | 1   | -   | -   | -   | -   | -   | -   |  |
|                         | FROG PLATE (RIGHT HAND) <i>included in new frog</i>                    | FP-901R         |                  | -        | -   | -   | -   | -   | -   | -   | -   | 1   | -   |  |
|                         | FROG PLATE (LEFT HAND) <i>included in new frog</i>                     | FP-902L         |                  | -        | -   | -   | 1   | -   | -   | -   | -   | -   | -   |  |
|                         | FROG PLATE (RIGHT HAND) <i>included in new frog</i>                    | FP-902R         |                  | -        | -   | -   | -   | -   | -   | -   | -   | 1   | -   |  |
|                         | FROG PLATE (LEFT HAND) <i>included in new frog</i>                     | FP-903L         |                  | -        | -   | -   | 1   | -   | -   | -   | -   | -   | -   |  |
|                         | FROG PLATE (RIGHT HAND) <i>included in new frog</i>                    | FP-903R         |                  | -        | -   | -   | -   | -   | -   | -   | -   | 1   | -   |  |
|                         | FROG PLATE (LEFT HAND) <i>included in new frog</i>                     | FP-904L         |                  | -        | -   | -   | 1   | -   | -   | -   | -   | -   | -   |  |
|                         | FROG PLATE (RIGHT HAND) <i>included in new frog</i>                    | FP-904R         |                  | -        | -   | -   | -   | -   | -   | -   | -   | 1   | -   |  |
|                         | FROG PLATE (LEFT HAND) <i>included in new frog</i>                     | FP-905L         |                  | -        | -   | -   | 1   | -   | -   | -   | -   | -   | -   |  |
|                         | FROG PLATE (RIGHT HAND) <i>included in new frog</i>                    | FP-905R         |                  | -        | -   | -   | -   | -   | -   | -   | -   | 1   | -   |  |
|                         | FROG PLATE (LEFT HAND) <i>included in new frog</i>                     | FP-906L         |                  | -        | -   | -   | 1   | -   | -   | -   | -   | -   | -   |  |
|                         | FROG PLATE (RIGHT HAND) <i>included in new frog</i>                    | FP-906R         |                  | -        | -   | -   | -   | -   | -   | -   | -   | 1   | -   |  |
|                         | FROG PLATE (LEFT HAND) <i>included in new frog</i>                     | FP-907L         |                  | -        | -   | -   | 1   | -   | -   | -   | -   | -   | -   |  |
|                         | FROG PLATE (RIGHT HAND) <i>included in new frog</i>                    | FP-907R         |                  | -        | -   | -   | -   | -   | -   | -   | -   | 1   | -   |  |
|                         | FROG PLATE (LEFT HAND) <i>included in new frog</i>                     | FP-908L         |                  | -        | -   | -   | 1   | -   | -   | -   | -   | -   | -   |  |
|                         | FROG PLATE (RIGHT HAND) <i>included in new frog</i>                    | FP-908R         |                  | -        | -   | -   | -   | -   | -   | -   | -   | 1   | -   |  |
|                         | FROG PLATE (LEFT HAND) <i>included in new frog</i>                     | FP-909L         |                  | -        | -   | -   | 1   | -   | -   | -   | -   | -   | -   |  |
|                         | FROG PLATE (RIGHT HAND) <i>included in new frog</i>                    | FP-909R         |                  | -        | -   | -   | -   | -   | -   | -   | -   | 1   | -   |  |
|                         | FROG PLATE (UNIVERSAL) <i>included in new frog</i>                     | FP-910          |                  | -        | -   | -   | 2   | -   | -   | -   | -   | -   | 2   |  |
|                         | FROG PLATE (LEFT HAND) <i>included in new frog</i>                     | FP-912L         |                  | -        | -   | -   | 2   | -   | -   | -   | -   | -   | -   |  |
|                         | FROG PLATE (RIGHT HAND) <i>included in new frog</i>                    | FP-912R         |                  | -        | -   | -   | -   | -   | -   | -   | -   | 2   | -   |  |
|                         | FROG PLATE (LEFT HAND) <i>included in new frog</i>                     | FP-737L         |                  | -        | -   | -   | 1   | -   | -   | -   | -   | -   | -   |  |
|                         | FROG PLATE (RIGHT HAND) <i>included in new frog</i>                    | FP-737R         |                  | -        | -   | -   | -   | -   | -   | -   | -   | 1   | -   |  |
| 67                      | FROG PLATE (LEFT HAND) <i>included in new frog</i>                     | FP-750L         | GTS-0615/2       | -        | -   | -   | 1   | -   | -   | -   | -   | -   | -   |  |
|                         | FROG PLATE (RIGHT HAND) <i>included in new frog</i>                    | FP-750R         | GTS-0615/1       | -        | -   | -   | -   | -   | -   | -   | -   | 1   | -   |  |
| 68                      | FROG PLATE (LEFT HAND) <i>included in new frog</i>                     | FP-756L         | GTS-0662/2       | -        | -   | -   | 1   | -   | -   | -   | -   | -   | -   |  |
|                         | FROG PLATE (RIGHT HAND) <i>included in new frog</i>                    | FP-756R         | GTS-0662/1       | -        | -   | -   | -   | -   | -   | -   | -   | 1   | -   |  |
| 69                      | FROG PLATE (LEFT HAND) <i>included in new frog</i>                     | FP-751L         | GTS-0670         | -        | -   | -   | 1   | -   | -   | -   | -   | -   | -   |  |
|                         | FROG PLATE (RIGHT HAND) <i>included in new frog</i>                    | FP-751R         | GTS-0670/1       | -        | -   | -   | -   | -   | -   | -   | -   | 1   | -   |  |
| 70                      | FROG PLATE (UNIVERSAL)                                                 | FP754           | GTS-0662/1       | -        | -   | -   | 1   | -   | -   | -   | -   | -   | -   |  |
| 71                      | FROG PLATE (LEFT HAND) <i>included in new frog</i>                     | FP-752L         | GTS-0556/2       | -        | -   | -   | 1   | -   | -   | -   | -   | -   | -   |  |
|                         | FROG PLATE (RIGHT HAND) <i>included in new frog</i>                    | FP-752R         | GTS-0556/1       | -        | -   | -   | -   | -   | -   | -   | -   | 1   | -   |  |
| 72                      | FROG PLATE (LEFT HAND) <i>included in new frog</i>                     | FP-452L         | GTS-0546         | -        | -   | -   | 1   | -   | -   | -   | -   | -   | -   |  |
|                         | FROG PLATE (RIGHT HAND) <i>included in new frog</i>                    | FP-452R         | GTS-0546         | -        | -   | -   | -   | -   | -   | -   | -   | 1   | -   |  |
| 73                      | FROG PLATE (LEFT HAND) <i>included in new frog</i>                     | FP-453L         | GTS-0547         | -        | -   | -   | 1   | -   | -   | -   | -   | -   | -   |  |
|                         | FROG PLATE (RIGHT HAND) <i>included in new frog</i>                    | FP-453R         | GTS-0547         | -        | -   | -   | -   | -   | -   | -   | -   | 1   | -   |  |
| 74                      | PANDROL FROG CLAMP INCLUDES SERRATED WASHER                            |                 | GTS-0365         | 18       | -   | -   | 14  | 18  | -   | -   | -   | 14  | -   |  |
| 75                      | INSULATION KIT FOR 3/4" THICK PLATE c/w HARDWARE                       | -               | GTS-0526         | 6        | 6   | 3   | 6   | 6   | 6   | 3   | 6   | 6   | 6   |  |
| 76                      | CAST TIE PLATE                                                         | CAST            | GTS-0501         | 22       | 18  | 22  | 14  | 22  | 18  | 22  | 14  | 22  | 14  |  |
| 77                      | PANDROL CLIP - e2055                                                   | e2055           | GTS-1322         | 94       | 56  | 89  | 202 | 94  | 56  | 91  | 202 | 94  | 56  |  |
|                         | PANDROL CLIP - e2056                                                   | e2056           | GTS-1322         | -        | -   | 2   | -   | -   | -   | -   | -   | -   | -   |  |
|                         | PANDROL CLIP "J" TYPE J2/67                                            |                 |                  | -        | -   | -   | 3   | -   | -   | -   | -   | 3   | -   |  |
| 78                      | SCREW SPIKE - POINTED                                                  | COMMON STANDARD | GTS-1315         | 192      | 186 | 166 | 386 | 192 | 186 | 166 | 386 | 192 | 186 |  |
| <b>GUARD RAIL PACK</b>  |                                                                        |                 |                  |          |     |     |     |     |     |     |     |     |     |  |
| 80                      | #10L GUARD RAIL ASSY.-RBM RIGHT SIDE FOR RIGHT HAND TURNOUT C/W SPIKES |                 | GTS-1123         | -        | -   | -   | -   | 1   | -   | -   | -   | -   | -   |  |
|                         | #10L GUARD RAIL ASSY.-RBM LEFT SIDE FOR LEFT HAND TURNOUT              |                 | GTS-1123         | 1        | -   | -   | -   | -   | -   | -   | -   | -   | -   |  |
|                         | #10 GUARD RAIL ASSY.-FLANGE BEARING RIGHT SIDE FOR RIGHT HAND TURNOUT  |                 |                  | -        | -   | -   | -   | -   | -   | -   | -   | 1   | -   |  |
|                         | #10 GUARD RAIL ASSY.-FLANGE BEARING LEFT SIDE FOR LEFT HAND TURNOUT    |                 |                  | -        | -   | 1   | -   | -   | -   | -   | -   | -   | -   |  |
|                         | #10 GUARD RAIL ASSY.-SPRING RIGHT SIDE FOR RIGHT HAND TURNOUT          |                 |                  | -        | -   | -   | -   | -   | -   | 1   | -   | -   | -   |  |
|                         | #10 GUARD RAIL ASSY.-SPRING RIGHT SIDE FOR LEFT HAND TURNOUT           |                 |                  | -        | 1   | -   | -   | -   | -   | -   | -   | -   | -   |  |
|                         | #10 GUARD RAIL ASSY.-SPRING LEFT SIDE FOR RIGHT HAND TURNOUT           |                 |                  | -        | -   | -   | -   | -   | -   | 1   | -   | -   | -   |  |
|                         | #10 GUARD RAIL ASSY.-SPRING LEFT SIDE FOR LEFT HAND TURNOUT            |                 |                  | -        | 1   | -   | -   | -   | -   | -   | -   | -   | -   |  |
| 81                      | #10L GUARD RAIL ASSY.- RBM STRAIGHT SIDE                               |                 | GTS-1123         | 1        | -   | -   | -   | 1   | -   | -   | -   | -   | -   |  |
| 82                      | CAST TIE PLATE                                                         | CAST            | GTS-0501         | 30       | 30  | 44  | -   | 30  | 30  | 44  | -   | -   | -   |  |
| 83                      | PANDROL CLIP - e2055                                                   | e2055           | GTS-1322         | 65       | 60  | 88  | -   | 65  | 60  | 88  | -   | -   | -   |  |
| 84                      | SCREW SPIKE - POINTED                                                  | COMMON STANDARD | GTS-1315         | 220      | 120 | 176 | -   | 220 | 120 | 176 | -   | -   | -   |  |
| <b>SWITCH PACKS</b>     |                                                                        |                 |                  |          |     |     |     |     |     |     |     |     |     |  |
|                         | #10 - 136, Power Operated - Right Hand Turnout                         |                 |                  | -        | -   | -   | -   | 1   | 1   | 1   | 1   | -   | -   |  |
|                         | #10 - 136, Power Operated - Left Hand Turnout                          |                 |                  | 1        | 1   | 1   | 1   | -   | -   | -   | -   | -   | -   |  |
| <b>FROG PACKS</b>       |                                                                        |                 |                  |          |     |     |     |     |     |     |     |     |     |  |
|                         | #10 - 136, RBM - Right Hand Turnout                                    |                 |                  | -        | -   | -   | -   | 1   | -   | -   | -   | -   | -   |  |
|                         | #10 - 136, RBM - Left Hand Turnout                                     |                 |                  | 1        | -   | -   | -   | -   | -   | -   | -   | -   | -   |  |
|                         | #10 - 136, SPRING - Right Hand Turnout                                 |                 |                  | -        | -   | -   | -   | -   | -   | 1   | -   | -   | -   |  |
|                         | #10 - 136, SPRING - Left Hand Turnout                                  |                 |                  | -        | 1   | -   | -   | -   | -   | -   | -   | -   | -   |  |
|                         | #10 - 136, FLANGE BEARING - Right Hand Turnout                         |                 |                  | -        | -   | -   | -   | -   | -   | -   | -   | 1   | -   |  |
|                         | #10 - 136, FLANGE BEARING - Left Hand Turnout                          |                 |                  | -        | -   | 1   | -   | -   | -   | -   | -   | -   | -   |  |
|                         | #10 - 136, SSGM - Right Hand Turnout                                   |                 |                  | -        | -   | -   | -   | -   | -   | -   | -   | 1   | -   |  |
|                         | #10 - 136, SSGM - Left Hand Turnout                                    |                 |                  | -        | -   | -   | 1   | -   | -   | -   | -   | -   | -   |  |
| <b>GUARD RAIL PACKS</b> |                                                                        |                 |                  |          |     |     |     |     |     |     |     |     |     |  |
|                         | #10 - 136, RBM - Right Hand Turnout                                    |                 |                  | -        | -   | -   | -   | 1   | -   | -   | -   | -   | -   |  |
|                         | #10 - 136, RBM - Left Hand Turnout                                     |                 |                  | 1        | -   | -   | -   | -   | -   | -   | -   | -   | -   |  |
|                         | #10 - 136, SPRING - Right Hand Turnout                                 |                 |                  | -        | -   | -   | -   | -   | -   | 1   | -   | -   | -   |  |
|                         | #10 - 136, SPRING - Left Hand Turnout                                  |                 |                  | -        | 1   | -   | -   | -   | -   | -   | -   | -   | -   |  |
|                         | #10 - 136, FLANGE BEARING - Right Hand Turnout                         |                 |                  | -        | -   | -   | -   | -   | -   | -   | -   | 1   | -   |  |
|                         | #10 - 136, FLANGE BEARING - Left Hand Turnout                          |                 |                  | -        | -   | 1   | -   | -   | -   | -   | -   | -   | -   |  |
| <b>SWITCH TIES</b>      |                                                                        |                 |                  |          |     |     |     |     |     |     |     |     |     |  |
|                         | 9 ft (2.8 m)                                                           |                 |                  | 19       | 19  | 19  | 19  | 19  | 19  | 19  | 19  | 19  | 19  |  |
|                         | 10 ft (3.1 m)                                                          |                 |                  | 10       | 10  | 10  | 10  | 10  | 10  | 10  | 10  | 10  | 10  |  |
|                         | 11 ft (3.4 m)                                                          |                 |                  | 7        | 7   | 7   | 7   | 7   | 7   | 7   | 7   | 7   | 7   |  |
|                         | 12 ft (3.7 m)                                                          |                 |                  | 6        | 6   | 6   | 6   | 6   | 6   | 6   | 6   | 6   | 6   |  |
|                         | 13 ft (4.0 m)                                                          |                 |                  | 8        | 8   | 8   | 8   | 8   | 8   | 8   | 8   | 8   | 8   |  |
|                         | 14 ft (4.3 m)                                                          |                 |                  | 7        | 7   | 7   | 7   | 7   | 7   | 7   | 7   | 7   | 7   |  |
|                         | 15 ft (4.6 m)                                                          |                 |                  | 6        | 6   | 6   | 6   | 6   | 6   | 6   | 6   | 6   | 6   |  |
|                         | 16 ft (4.9 m)                                                          |                 |                  | 6        | 6   | 6   | 6   | 6   | 6   | 6   | 6   | 6   | 6   |  |