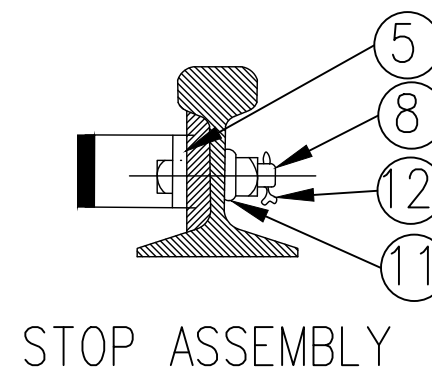
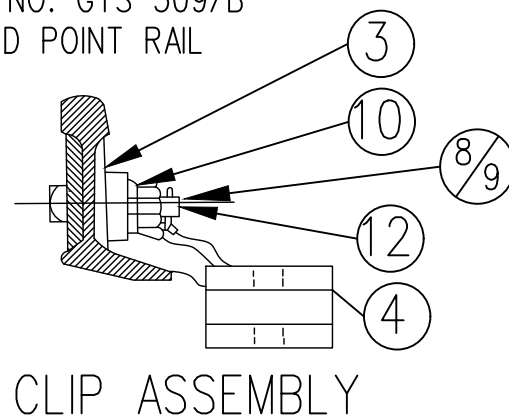
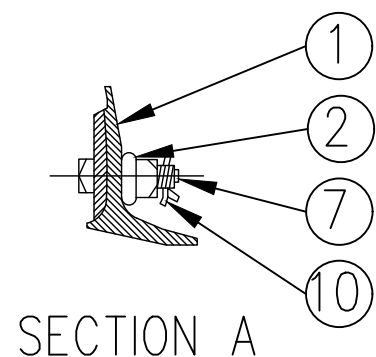


ASSEMBLY OF 16'-6" SAMSON POINT RAIL

DRAWING NO. GTS 309/B  
LEFT HAND POINT RAIL



| ITEM NO | DESCRIPTION  | STANDARD PLAN NO. | MARK NO. | QUANTITY        |    |
|---------|--|-------------------|----------|-----------------|----|
|         |  |                   |          | DWG.NO.GTS-0309 |    |
|         |  |                   |          | A               | B  |
| 1       | RIGHT SAMSON POINT RAIL                                      | R11C-375.1        |          | 1               | -  |
|         | LEFT SAMSON POINT RAIL                                       |                   |          | -               | 1  |
| 2       | REINFORCING BAR 3/8" THK X 13'-5" LONG                       | GTS-0342/E        |          | 1               | 1  |
| 3       | SHIM 3/8" THK X 7" LONG                                      | GTS-0343          |          | 2               | 2  |
| 4       | SWITCH CLIP-RIGHT HAND                                       | GTS-0338/1        | 338A-1   | 2               | -  |
|         | SWITCH CLIP-LEFT HAND  | GTS-0338/2        | 338B-1   | -               | 2  |
| 5       | STOP BLOCK   | GTS-0339/E        | E        | 1               | 1  |
| 6       | 3/4" DIA-10 UNC SQ.HD.BOLT X 2-1/2" LG.C/W SQ.NUT            | GTS-1309/1        |          | 11              | 11 |
| 7       | 3/4" DIA-10 UNC SQ.HD.BOLT (3/8 HD. X 2-1/2" LG.C/W SQ.NUT   | GTS-1309/2        |          | 3               | 3  |
| 8       | 3/4" DIA-10 UNC SQ.HD.BOLT X 3" LG.C/W SQ.NUT                | GTS-1305/3        |          | 2               | 2  |
| 9       | 3/4" DIA-10 UNC SQ.HD.BOLT (3/8" HD) X 3-3/4" LG.C/W HEX.NUT | GTS-1304/5        |          | 2               | 2  |
| 10      | 3/4" DIA-10 UNC SQ.HD.BOLT X 3-3/4" LG.C/W HEX.NUT           | GTS-1304/6        |          | 2               | 2  |
| 11      | SPRING WASHER FOR 3/4" DIA BOLT                              | GTS-1301          |          | 20              | 20 |
| 12      | 3/16" COTTER PIN X 1-1/4" LONG                               |                   |          | 6               | 6  |

NOTES

WHEN REFERRING TO POINT RAILS, DRAWING NO. MUST BE STATED AS A OR B INDICATE RIGHT OR LEFT HAND POINT:

A- RIGHT HAND POINT

B- LEFT HAND POINT (ILLUSTRATED)

**METRIC CONVERSION: 1 inch=25.4mm, 1 foot=304.8mm**

|     |          |  |             |
|-----|----------|--|-------------|
| 1   | 18/07/27 | ADDED IMPERIAL TO METRIC CONVERSION NOTE |             |
| No. | Date     | Revision                                 | By Approved |

Standard/ **ASSEMBLY**  
**16'-6" SAMSON POINT RAIL**  
**100LB. A.R.A.A. RAIL**

Drawn MG Checked GGS Approved *[Signature]*  
VP Engineering & Asset Management



Date DEC 15, 2017 Plan Number GTS-0309 Rev 1

REFERENCE: TS-309 A/B Sheet 1 OF 1