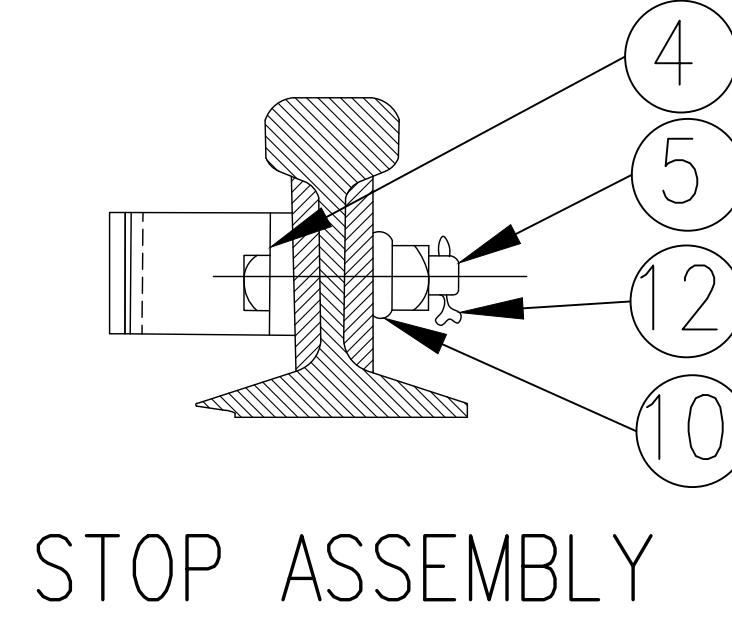
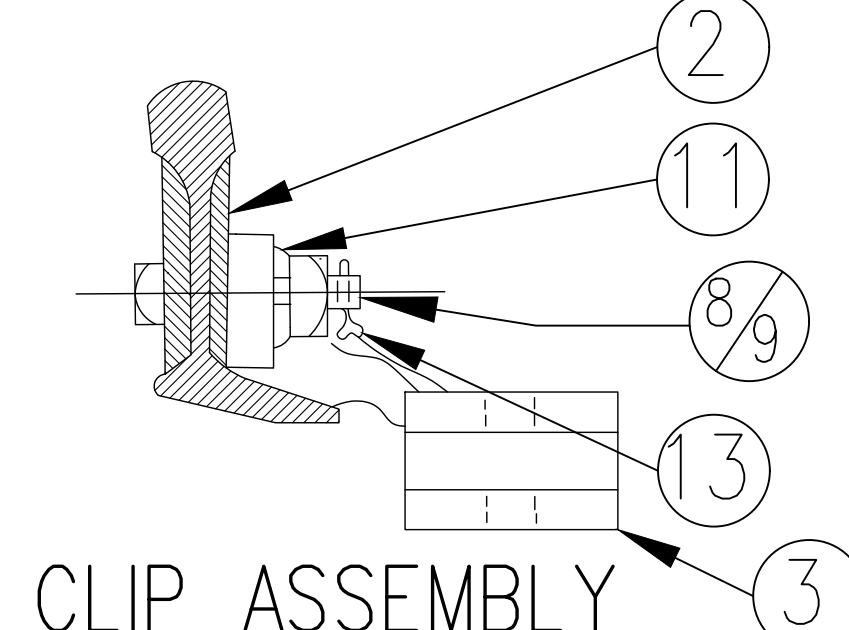
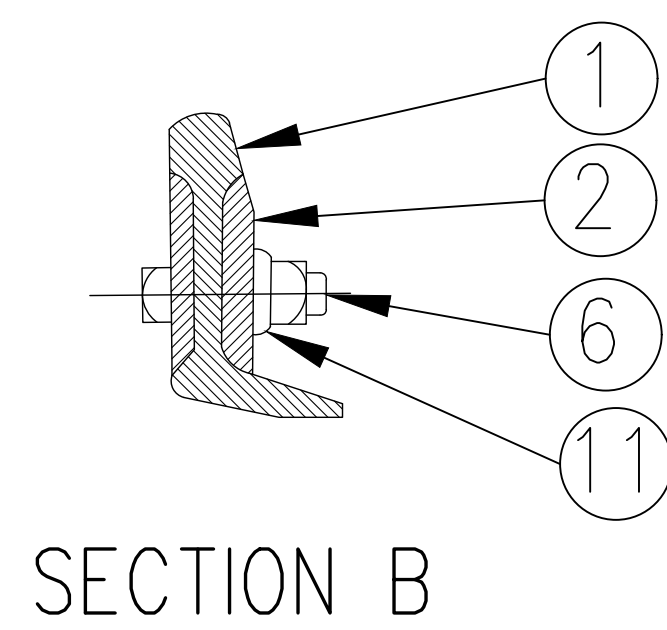
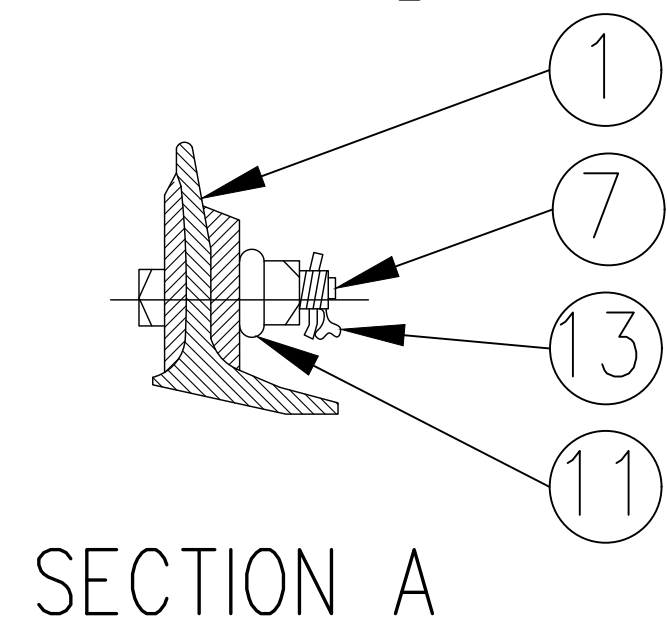


ASSEMBLY OF 16'-6" SAMSON POINT RAIL

DRAWING NO. GTS-0319/B  
LEFT HAND POINT RAIL



| ITEM NO. | DESCRIPTION  | STANDARD PLAN NO. | MARK NO. | QUNTY           |    |
|----------|--|-------------------|----------|-----------------|----|
|          |  |                   |          | DWG.NO.GTS-0319 |    |
|          |  |                   |          | A               | B  |
| 1        | RIGHT POINT RAIL   | GTS-0415          |          | 1               | -  |
|          | LEFT POINT RAIL  |                   |          | -               | 1  |
| 2        | REINFORCING BAR 1/2" THK X 15'-0" LONG.                  | GTS-0342/J        |          | 2               | 2  |
| 3        | SWITCH CLIP-RIGHT HAND                                   | GTS-0338/5        | 338A-3   | 2               | -  |
|          | SWITCH CLIP-LEFT HAND                                    | GTS-0338/6        | 338B-3   | -               |    |
| 4        | STOP BLOCK   | GTS-0339/M        | M        | 1               | 1  |
| 5        | 3/4" DIA-10 UNC SQ.HD.BOLT X 4" LG.C/W SQ.NUT            | GTS-1305/6        |          | 2               | 2  |
| 6        | 1" DIA-8 UNC SQ.HD.BOLT X 3-1/2" LG.C/W SQ.NUT           | GTS-1309/13       |          | 13              | 13 |
| 7        | 1" DIA-8 UNC SQ.HD.BOLT (3/8" HD) X 3-1/2" LG.C/W SQ.NUT | GTS-1305/16       |          | 3               | 3  |
| 8        | 1" DIA-8 UNC SQ.HD.BOLT (3/8" HD) X 4-1/4" LG.C/W SQ.NUT | GTS-1305/19       |          | 2               | 2  |
| 9        | 1" DIA-8 UNC SQ.HD.BOLT X 4-1/2" LG.C/W SQ.NUT           | GTS-1305/21       |          | 2               | 2  |
| 11       | SPRING WASHER FOR 3/4" DIA BOLT                          | GTS-1301          |          | 2               | 2  |
| 12       | SPRING WASHER FOR 1" DIA BOLT                            | GTS-1301          |          | 20              | 20 |
| 13       | 3/16" COTTER PIN X 1-1/4" LONG                           |                   |          | 2               | 2  |
| 14       | 1/4" COTTER PIN X 2" LONG                                |                   |          | 7               | 7  |

NOTES

WHEN REFERRING TO POINT RAILS, DRAWING NO. MUST BE STATED AS A OR B INDICATE RIGHT OR LEFT HAND POINT:  
A- RIGHT HAND POINT  
B- LEFT HAND POINT (ILLUSTRATED)

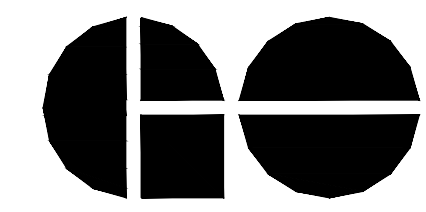
REFERENCE: OLD POINT NOS. RP210S & LP210S

METRIC CONVERSION: 1 inch=25.4mm, 1 foot=304.8mm

| No. | Date     | Revision                                 | By | Approved |
|-----|----------|--|----|----------|
| 1   | 18/07/27 | ADDED IMPERIAL TO METRIC CONVERSION NOTE |    |          |

Standard / ASSEMBLY  
16'-6" SAMSON POINT RAIL  
132LB. R.E. RAIL

Drawn \_\_\_\_\_ Checked \_\_\_\_\_ Approved *[Signature]*  
VP Engineering & Asset Management



Date DEC 15, 2017 Plan Number GTS-0319 Rev 1