

NOTES:

- ALL HOLES TO BE DRILLED.
- IDENTIFICATION CHARACTER 7 (1/4") MIN. HEIGHT TO BE STAMPED ON EACH CLIP AS INDICATED.
- WHEN REFERRING TO SWITCH CLIPS DRAWING NUMBER & MARK NUMBER MUST BE STATED TO INDICATE SPECIFIC CLIP REQUIRED:

ITEM NO	DESCRIPTION	MARK NO.
1	100 LB SWITCH CLIP-RIGHT HAND	338A-1
2	100 LB SWITCH CLIP-LEFT HAND	338B-1
3	115 LB SWITCH CLIP-RIGHT HAND	338A-2
4	115 LB SWITCH CLIP-LEFT HAND	338B-2
5	132 & 136 LB SWITCH CLIP-RIGHT HAND	338A-3
6	132 & 136 LB SWITCH CLIP-LEFT HAND	338B-3

- ALL SWITCH CLIPS ARE SIMILARLY FORMED. ONLY THE MOUNTING HOLE LOCATIONS VARY FROM JAW OPENING TO CENTER LINE OF HOLES.

MATERIAL (FORGED):

19.05 (3/4") PLATE TO CONFORM TO THE LATEST REVISION OF GO TRANSIT TRACK STANDARD OR IN GENERAL WITH LATEST REVISION OF A.S.T.M. SPECIFICATION FOR COMMERCIAL QUALITY HOT ROLLED SHEET STEEL A-675 CHEMICAL REQUIREMENTS:

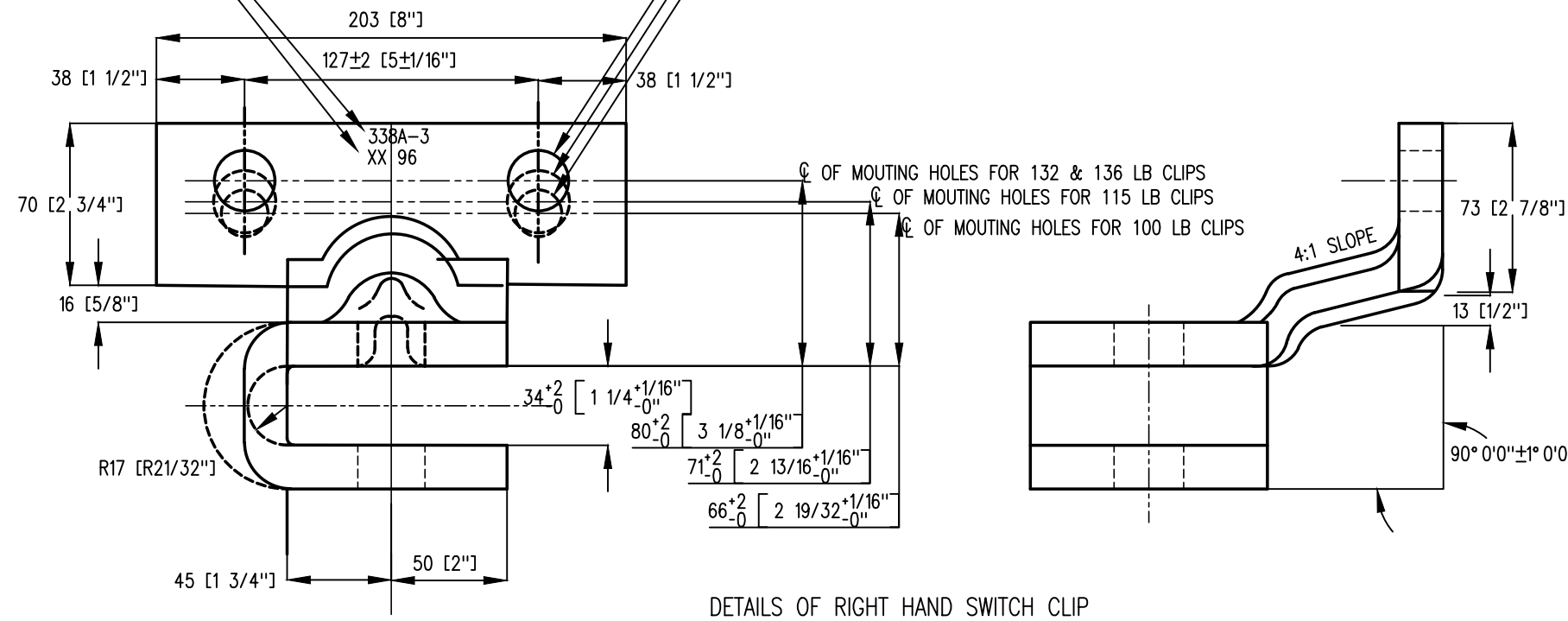
	MINIMUM	MAXIMUM
CARBON	0.15%	0.25%
MANGANESE	0.30%	0.60%
PHOSPHORUS		0.04%
SULPHUR		0.05%

THE MANUFACTURER'S INITIALS OR MARK AND THE LAST 2-FIGURES OF THE YEAR TO BE STAMPED IN 7 (1/4") MINIMUM CHARACTERS AS SHOWN.

IDENTIFICATION MARK NUMBER 338A (RIGHT HAND) OR 338B (LEFT HAND) FOLLOWED BY A 1, 2 OR 3 (PER TABLE)

NOTES: MOUNTING HOLES TO BE DRILLED

- DRILL 2 HOLES - 27 (1-1/16") DIA. FOR 132 & 136 LB CLIPS
- DRILL 2 HOLES - 27 (1-1/16") DIA. FOR 115 LB CLIPS
- DRILL 2 HOLES - 21 (1-13/16") DIA. FOR 100 LB CLIPS



DETAILS OF RIGHT HAND SWITCH CLIP

METRIC CONVERSION: 1 inch=25.4mm, 1 foot=304.8mm

1	18/07/27	ADDED IMPERIAL TO METRIC CONVERSION NOTE
No.	Date	Revision
		By Approved

Standard / **NON-ADJUSTABLE SIDE JAW SWITCH CLIP**
100, 115, 132 AND 136LB SWITCH POINTS

Drawn _____ Checked _____ Approved *[Signature]*
 VP Engineering & Asset Management



Date DEC 15, 2017 Plan Number GTS-0338 Rev 1

REFERENCE: TS-338 Sheet 1 OF 1