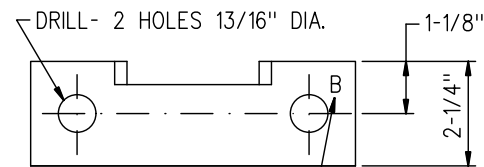
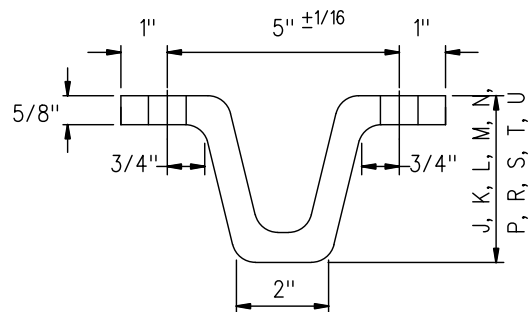


85 LB. RAIL-STOPS

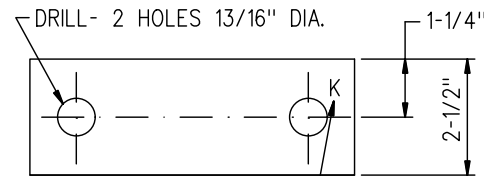


SEE NOTE 1

MARK No.	LENGTH ±1/32
A	3 15/32"
B	3 7/8"
C	2 3/4"

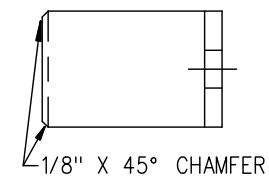


115, 132 & 136 LB. RAIL-STOPS



SEE NOTE 1

MARK No.	LENGTH ±1/32
J	3 9/32"
K	2 23/32"
L	3 3/4"
M	3 7/16"
N	2 9/32"
P	2 29/32"
R	3 15/16"
S	2 11/32"
T	4 1/8"
U	1 15/16"
W	3 19/32"

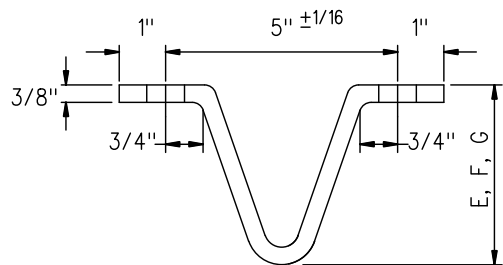


NOTES:

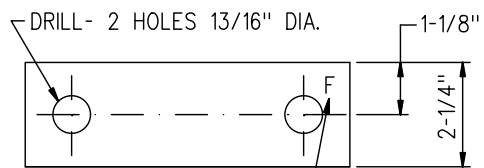
- ALL STOPS MUST BE STAMPED PLAINLY IN 1/2" MINIMUM CHARACTER (MARK NO. A, B, ETC) FOR IDENTIFICATION OF STOP BLOCKS.
- STOP BLOCKS TO CONFORM IN GENERAL WITH LATEST REVISION OF ASTM SPECIFICATION FOR COMMERCIAL QUALITY HOT ROLLED BAR STEEL, A-675 FORGED THICKNESS AS INDICATED.
- THE USE OF ACETYLENE TORCH OR OTHER BURNING METHOD NOT TO BE USED DURING THE MANUFACTURE OF STOP BLOCKS.
- WHEN REFERRING TO STOP BLOCKS, DRAWING NUMBER MUST BE STATED AS A, B, C ETC. TO INDICATE SPECIFIC BLOCK REQUIRED.

NUMBER LEGEND
 GTS-0339 N TRACK STANDARDS DRAWING NUMBER
 MARK NUMBER

CHEMICAL REQUIREMENT:	MIN.	MAX.
CARBON	0.15 %	0.25 %
MANGANESE	0.30 %	0.60 %
PHOSPHORUS		0.04%
SULPHUR		0.05 %

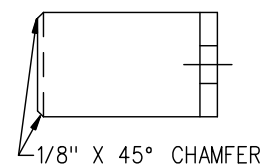


100 LB. RAIL-STOPS



SEE NOTE 1

MARK No.	LENGTH ±1/32
E	3 15/32"
F	3"
G	3 15/16"



METRIC CONVERSION: 1 inch=25.4mm, 1 foot=304.8mm

1	18/07/27	ADDED IMPERIAL TO METRIC CONVERSION NOTE	
No.	Date	Revision	By Approved

Standard/ **STOP BLOCKS FOR 85,100,115,132&136 LB. SWITCHES FOR POWER GENERATION**

Drawn MG Checked GGS Approved *[Signature]* VP Engineering & Asset Management



Date SEPT 15/2017 Plan Number GTS-0339 Rev 1