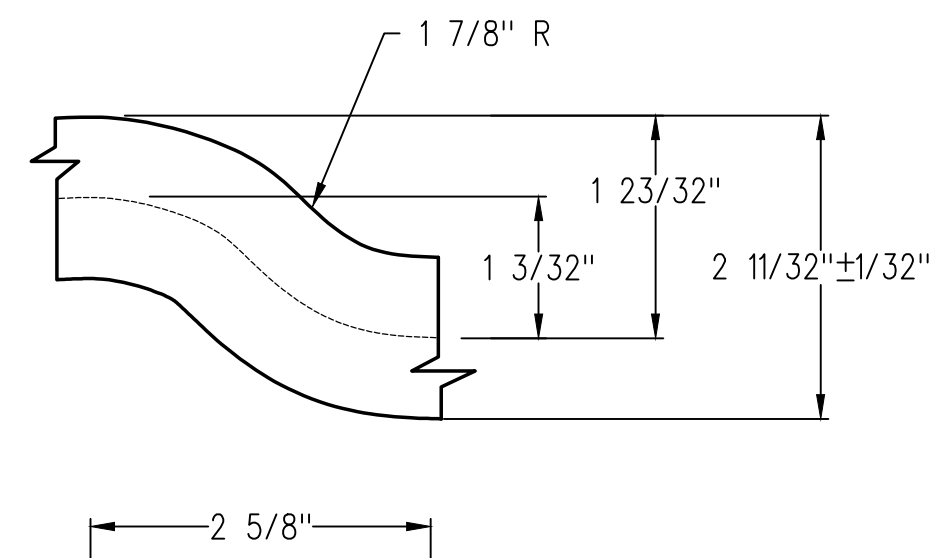
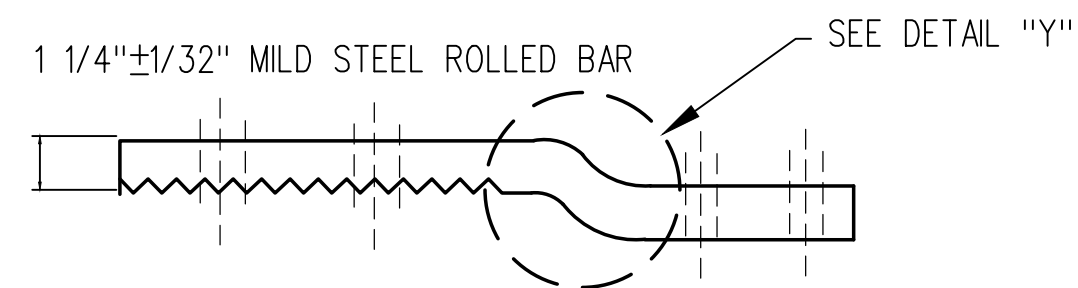


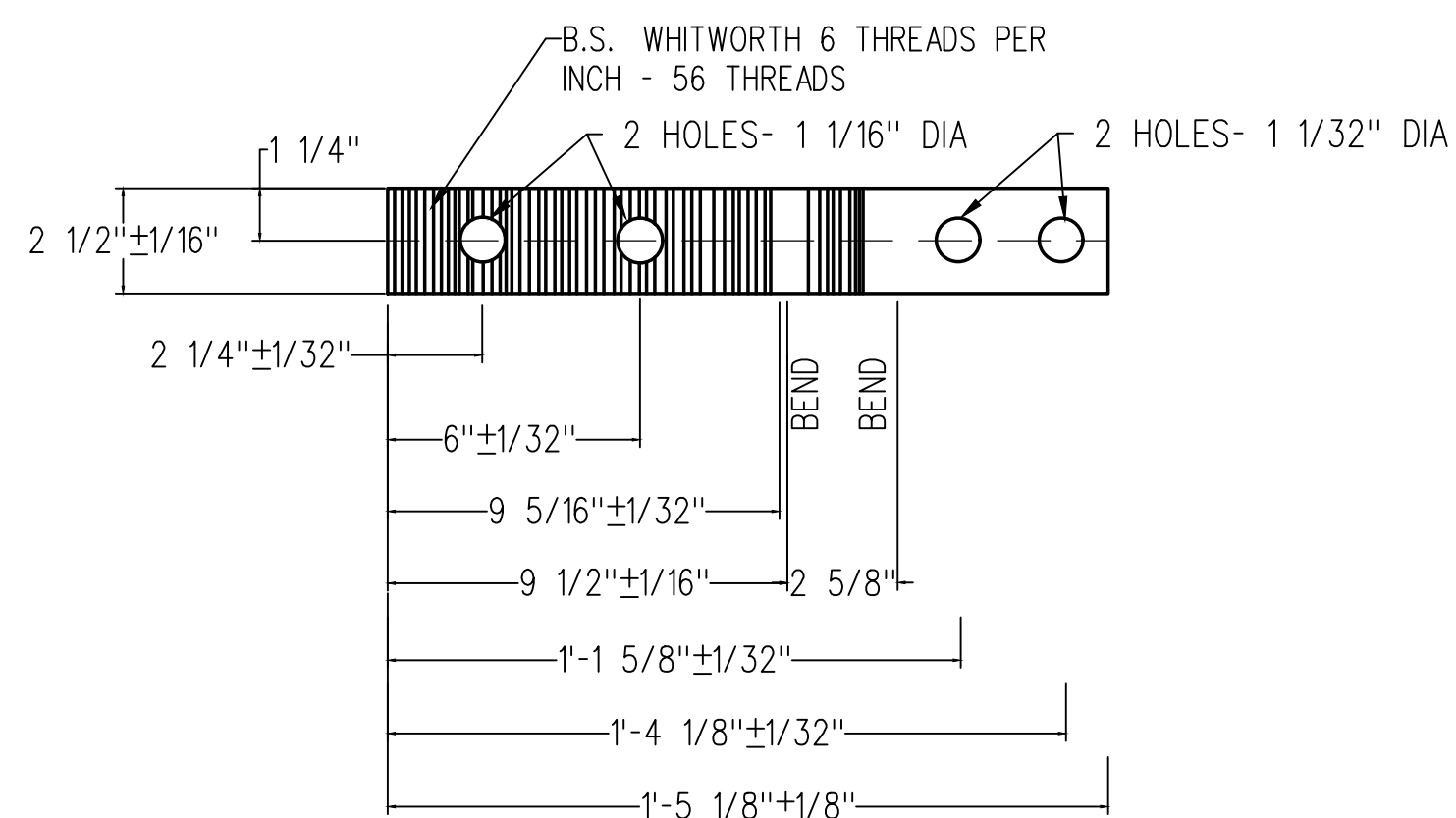
ASSEMBLY OF SWITCH ROD



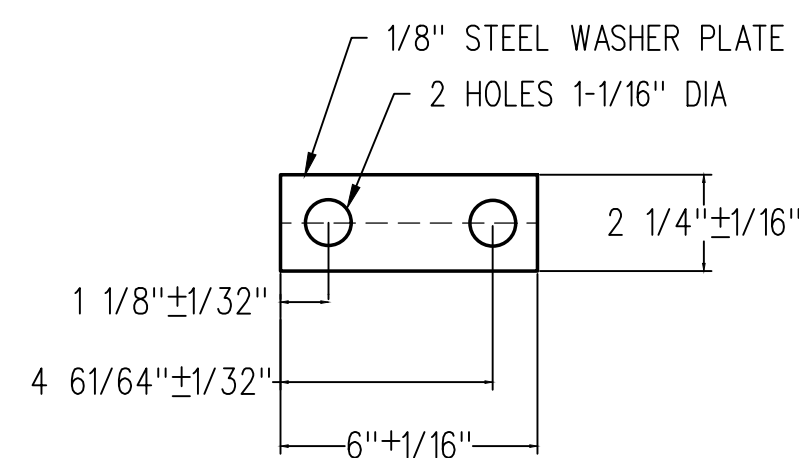
ROD BENDING DETAIL "Y"



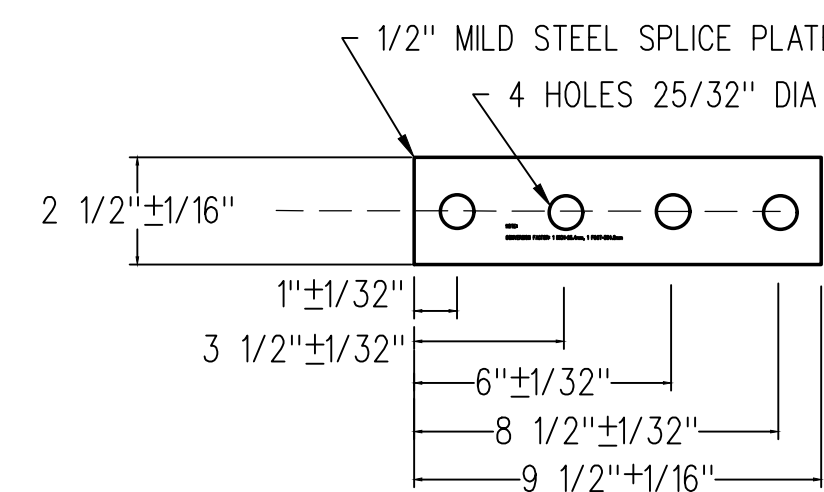
DETAIL OF ITEM 1



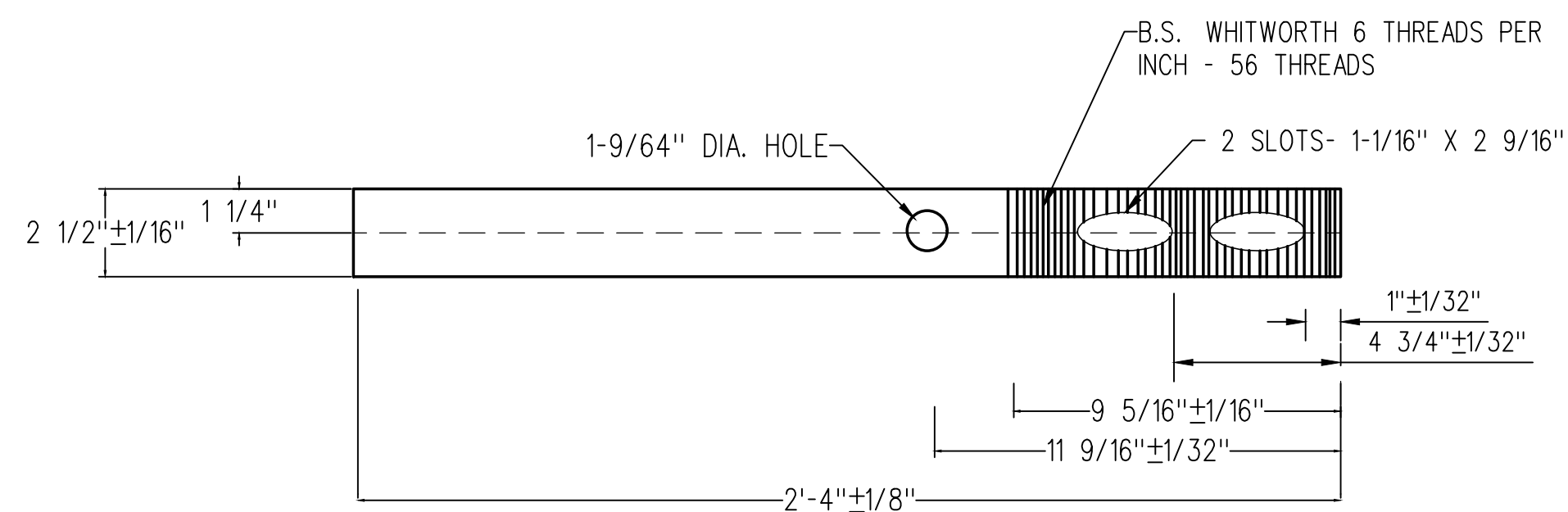
DETAIL OF ITEM 2



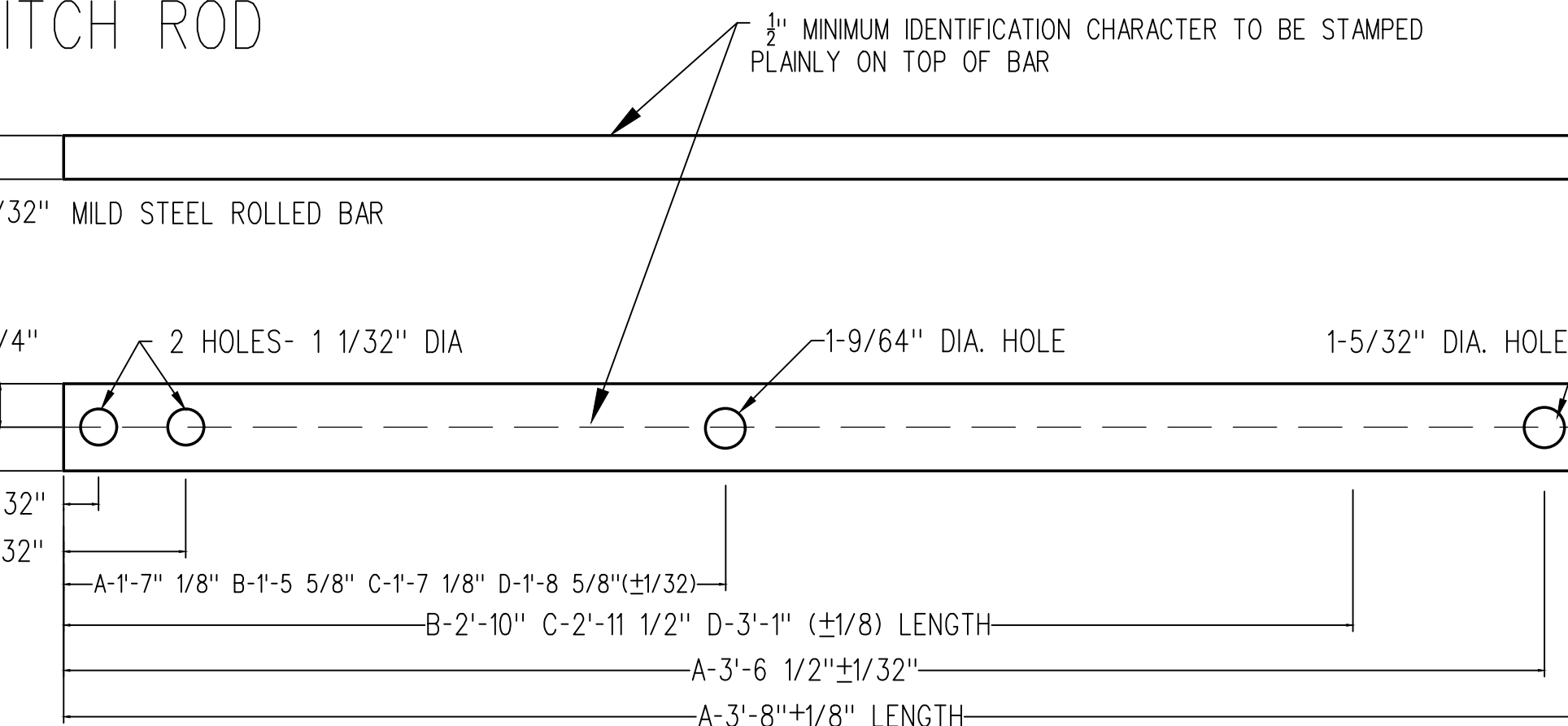
DETAIL OF ITEM 4



DETAIL OF ITEM 8



DETAIL OF ITEM 3



NOTES:

- ALL METAL PARTS IN CONTACT WITH INSULATION SHALL HAVE SHARP EDGE & BURRS OR OTHER FOREIGN MATTER REMOVED BEFORE ASSEMBLING. DIELECTRIC REQUIREMENT: DIELECTRIC TESTS SHALL BE MADE WITH THE INSULATION DRY. ASSEMBLED INSULATED TRACK FITTINGS SHALL WITHSTAND FOR NOT LESS THREE SECONDS AN INSULATED TEST OF 1500 VOLTS A.C WITHOUT FLASH OVER OR PUNCTURE BETWEEN ALL METALLIC PARTS & OTHER METALLIC PARTS INSULATED THEREFROM. ALL HOLES SHALL BE DRILLED. ITEM 8 ALSO USED AND DETAILED ON VERTICAL INSULATED ROD DRAWING NO.GTS-344 A/D. ITEM 3 AND 4 ALSO USED AND DETAILED ON NON-INSULATED ROD DRAWING NO.GTS-340 A/D. THE USE OF ACETYLENE TORCH OR OTHER BURNING METHOD FOR THE CUTTING OR MAKING OF HOLES IN THE MANUFACTURE OF SWITCH RODS IS ABSOLUTELY PROHIBITED. WHEN REFERRING TO SWITCH RODS, DRAWING NUMBER MUST BE STATED AS A, B, C OR D TO INDICATE SPECIFIC ROD REQUIRED.

MATERIAL:

BAR STOCK TO CONFORM TO THE LATEST REVISION OF GO TRANSIT TRACK STANDARD OR IN GENERAL WITH LATEST REVISION OF ASTM SPECIFICATION FOR COMMERCIAL QUALITY HOT ROLLED BAR STEEL A-675 :

	MINIMUM	MAXIMUM
CARBON	0.15%	0.25%
MANGANESE	0.30%	0.60%
PHOSPHORUS		0.04%
SULPHUR		0.05%

BILL OF MATERIAL							
ITEM NO.	DESCRIPTION	MARK NO.	STANDARD PLAN	QUANTITY FOR ROD 340			
				A	B	C	D
1	BAR ROD 1 1/4" THICK X 2 1/2" WIDE X 3'-8" LONG	340A	-	1	-	-	-
	BAR ROD 1 1/4" THICK X 2 1/2" WIDE X 2'-10" LONG	340B	-	-	1	-	-
	BAR ROD 1 1/4" THICK X 2 1/2" WIDE X 2'-11" LONG	340C	-	-	-	1	-
	BAR ROD 1 1/4" THICK X 2 1/2" WIDE X 3'-1" LONG	340D	-	-	-	-	1
2	BAR ROD 1 1/4" THICK X 2 1/2" WIDE X 1'-5" LONG	-	-	1	1	1	1
3	BAR ROD 1 1/4" THICK X 2 1/2" WIDE X 2'-4" LONG	-	-	1	1	1	1
4	FLAT WASHER 1/8" THICK X 2 1/4" WIDE X 6" LONG	-	-	1	1	1	1
5	1" DIA -8 UNC SQ.HD.BOLT X 4 3/4" LONG C/W SQ.NUT	-	GTS-1305/24	2	2	2	2
6	SPRING WASHER FOR 1" DIA BOLT	-	GTS-1301	2	2	2	2
7	1/4" COTTER PIN X 2" LONG	-	-	2	2	2	2
8	SPLICE PLATE 1/2" THICK X 2 1/2" WIDE X 9 1/2" LONG	-	-	2	2	2	2
9	FIBRE BUSHING 7/64" THICK X 1" O.D. X 1 15/32" LONG	353F	GTS-353F	4	4	4	4
10	FIBRE BUSHING 1/8" THICK X 2 3/4" WIDE X 10" LONG	353A	GTS-353A	2	2	2	2
11	3/4" DIA -10 UNC SQ.HD.BOLT X 4 1/4" LONG C/W SQ.NUT	-	GTS-1304/4	4	4	4	4
12	SPRING WASHER FOR 3/4" DIA BOLT	-	GTS-1301	4	4	4	4
13	3/16" COTTER PIN X 1 1/4" LONG	-	-	4	4	4	4

METRIC CONVERSION: 1 inch=25.4mm, 1 foot=304.8mm

No.	Date	Revision	By	Approved
1	18/07/27	ADDED IMPERIAL TO METRIC CONVERSION NOTE		

Standard / INSULATED SWITCH RODS  
100, 115, 132LB. A.R.A.A. RAIL

Drawn MG Checked GGS Approved VP Engineering & Asset Management



Date DEC 15, 2017 Plan Number GTS-0341 Rev 1

REFERENCE: TS-341 A/D Sheet 1 OF 1