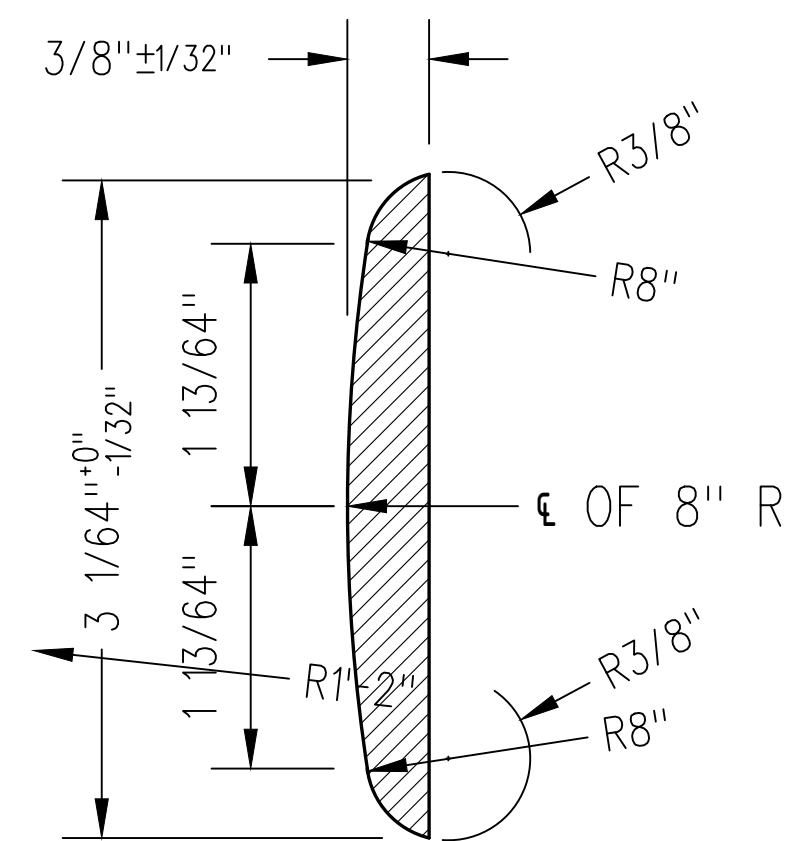


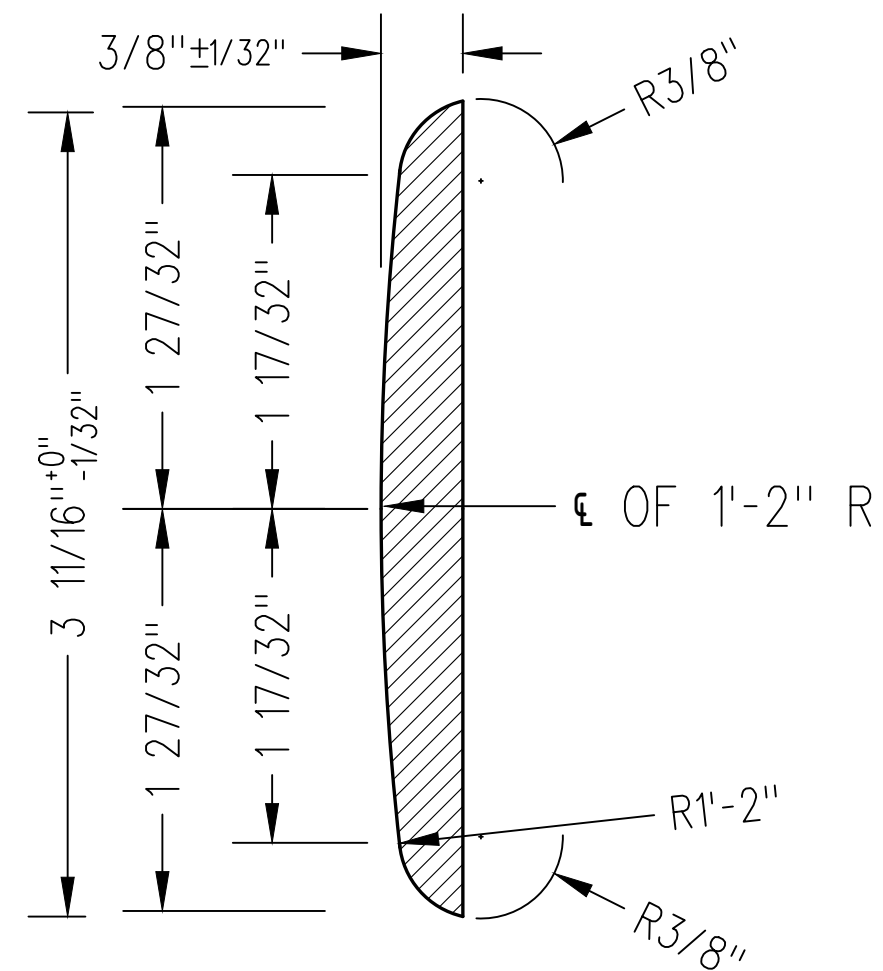
85 LB STD.RAIL



TYPICAL SECTION -3.2 LB./FT.

ITEM NO.	LENGTH	USED ON
A	8'-0"	11'-0" POINT RAILS
B	13'-5"	16'-6" POINT RAILS
C	18'-0"	22'-0" POINT RAILS

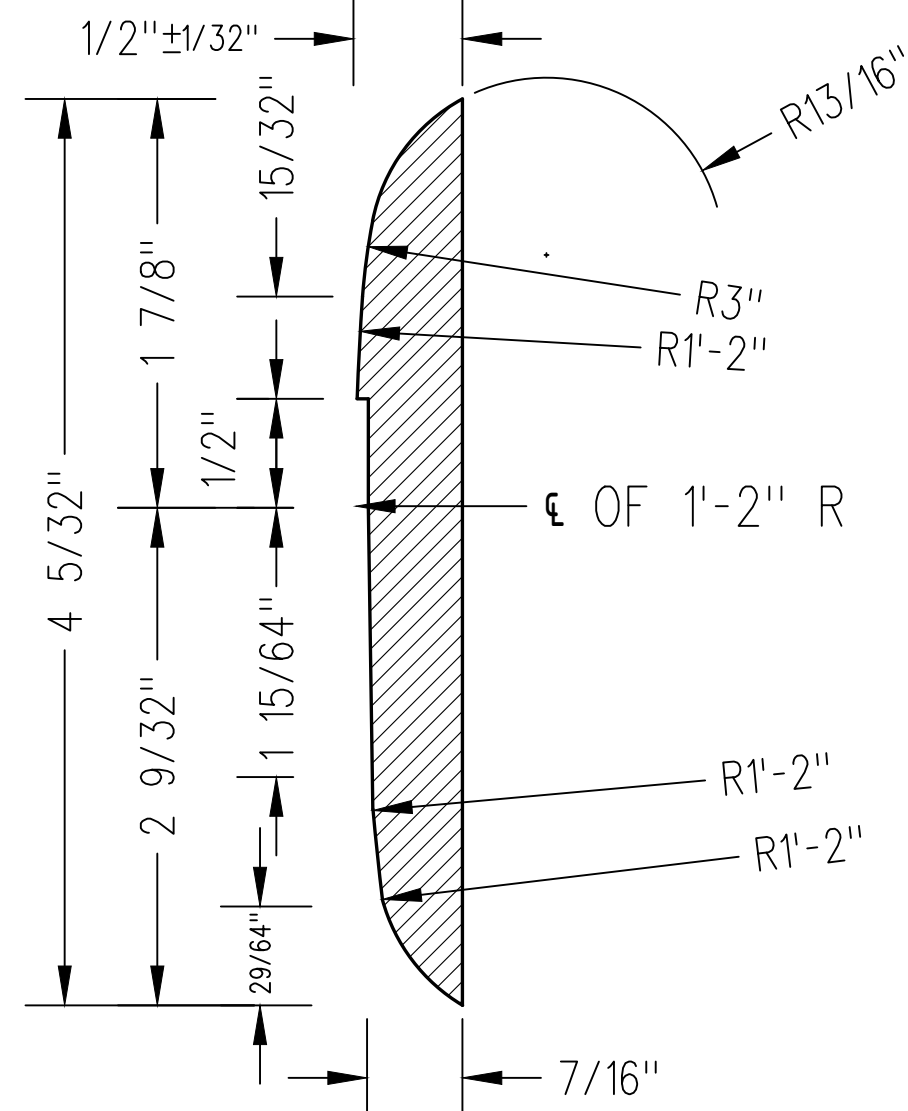
100 LB ARA-A RAIL



TYPICAL SECTION -4.1 LB./FT.

ITEM NO.	LENGTH	USED ON
D	8'-0"	11'-0" POINT RAILS
E	13'-5"	16'-6" POINT RAILS
F	18'-3"	22'-0" POINT RAILS

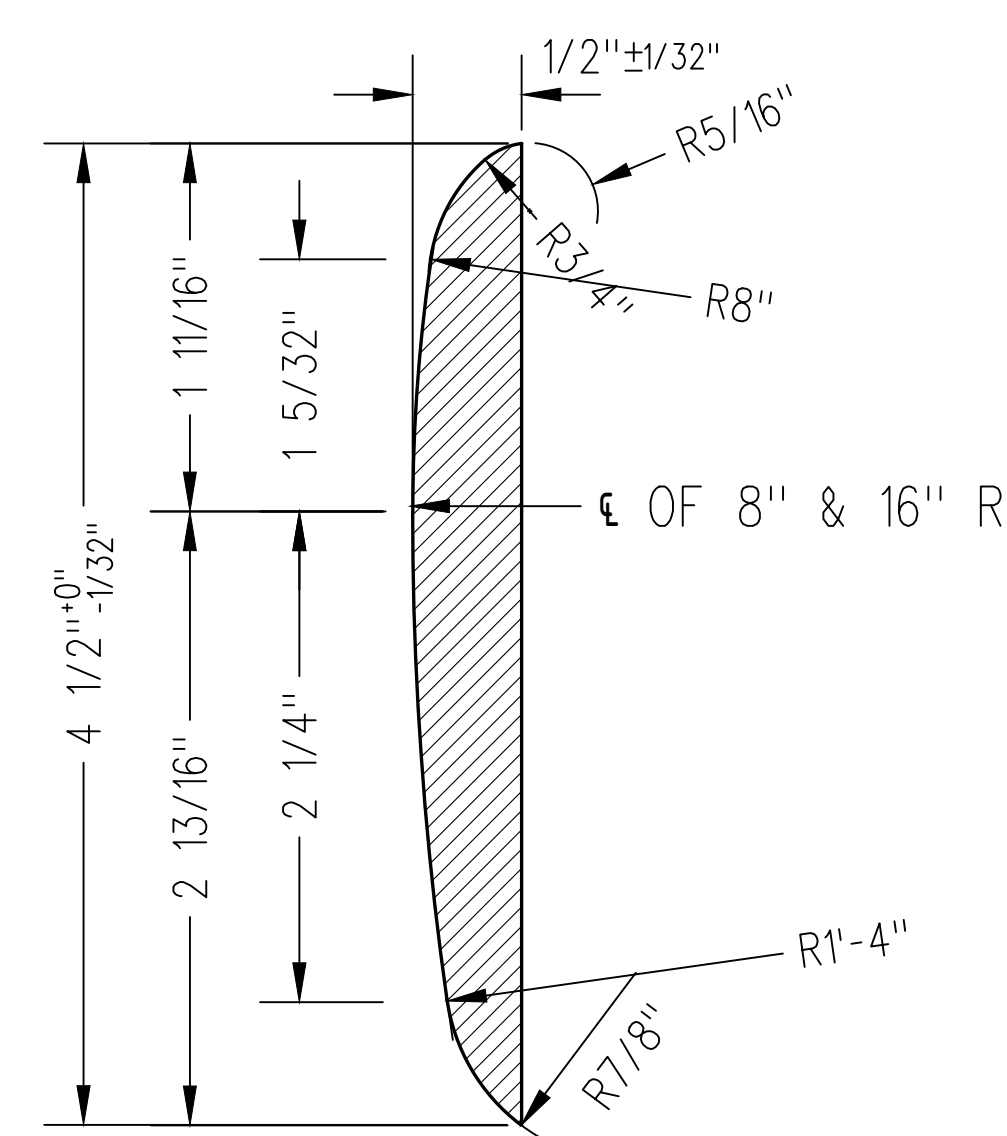
115 LB RE RAIL



TYPICAL SECTION -5.5 LB./FT.

ITEM NO.	LENGTH	USED ON
G	14'-3"	16'-6" POINT RAILS
H	19'-0"	22'-0" POINT RAILS
LL	25'-0"	36'-5" POINT RAILS
MM	20'-0"	31'-6" POINT RAILS

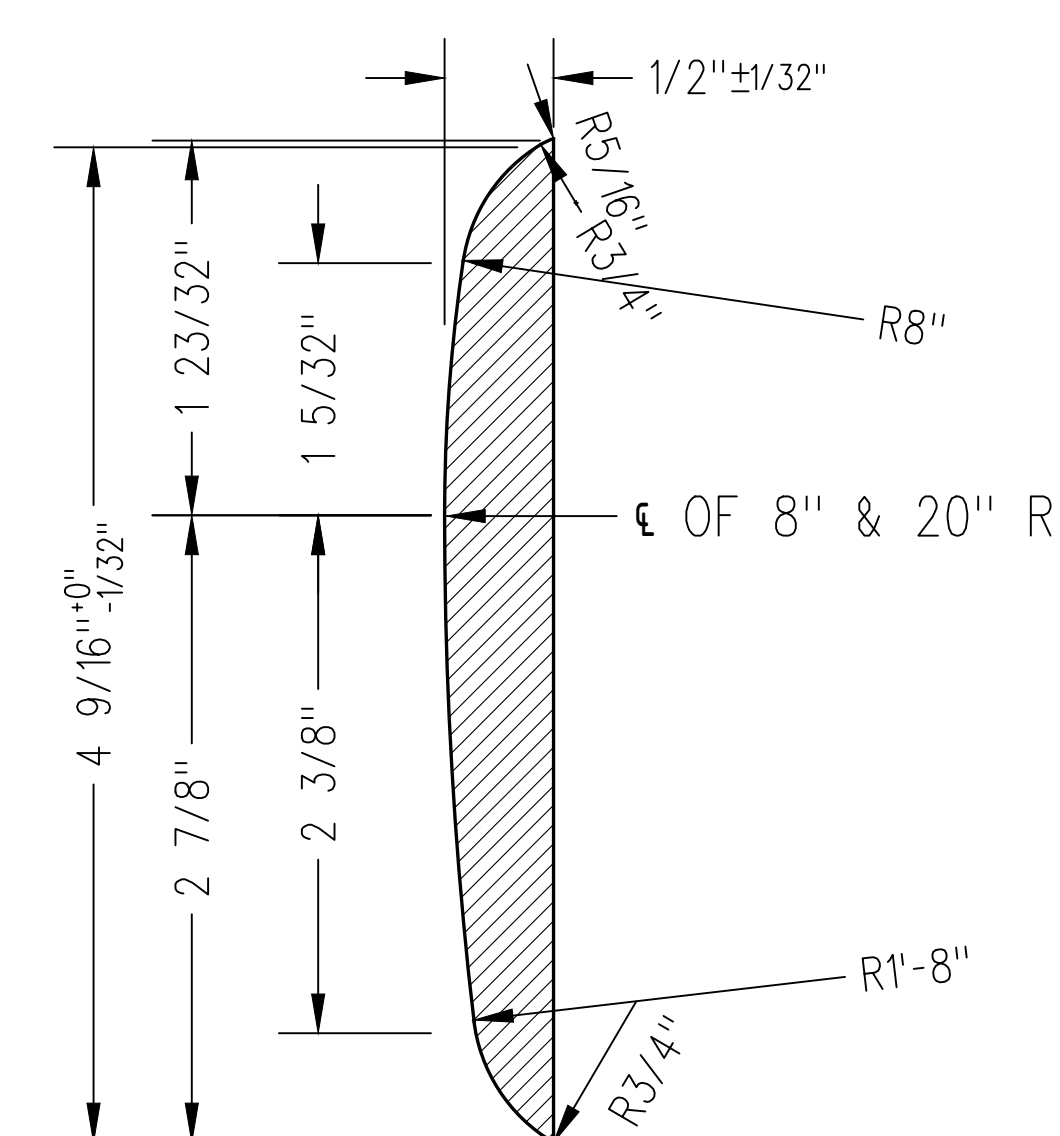
132 LB RE RAIL



TYPICAL SECTION -6.2 LB./FT.

ITEM NO.	LENGTH	USED ON
J	15'-0"	16'-6" POINT RAILS
K	20'-0"	22'-0" POINT RAILS
L	37'-0"	39'-0" POINT RAILS
W	31'-3"	33'-0" POINT RAILS

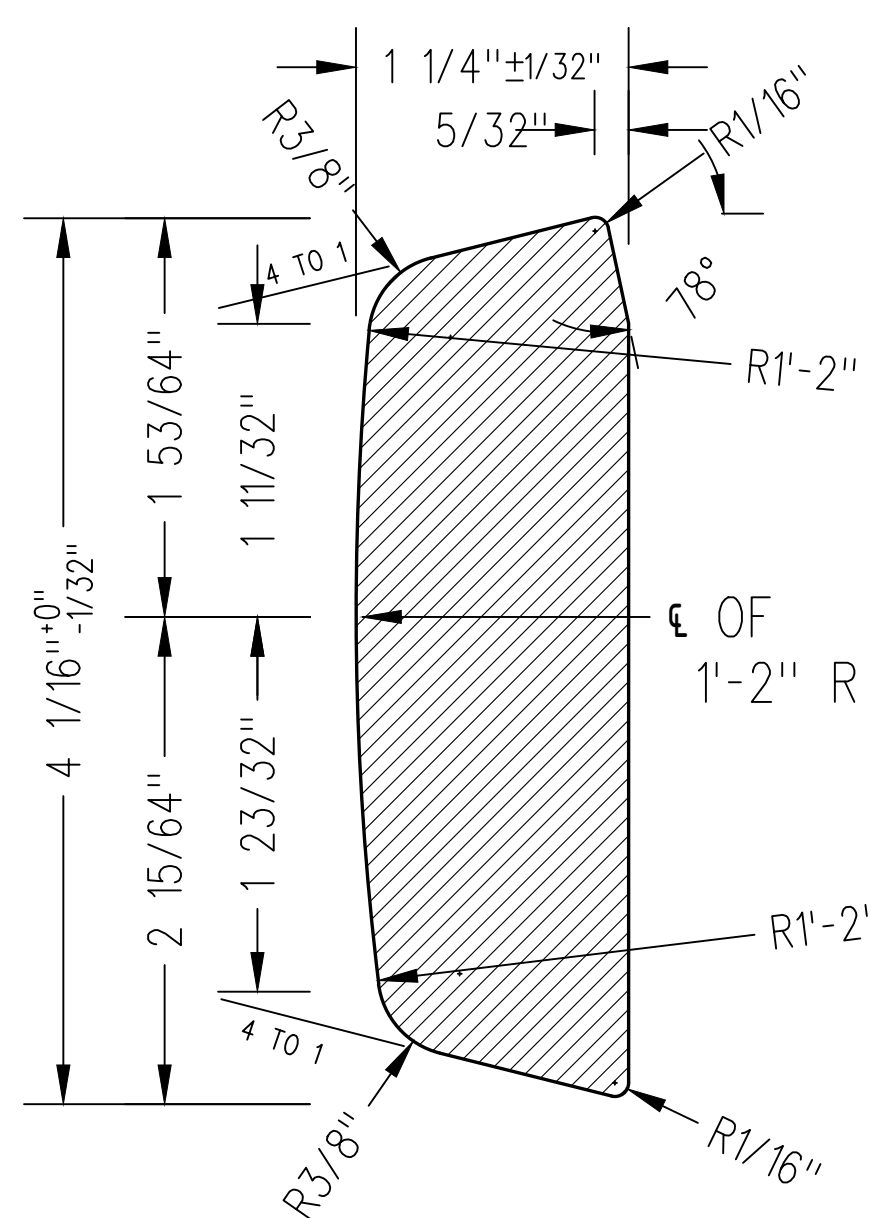
136 LB RAIL



TYPICAL SECTION -6.3 LB./FT.

ITEM NO.	LENGTH	USED ON
X	15'-0"	16'-6" POINT RAILS
Y	20'-0"	22'-0" POINT RAILS
Z	31'-3"	33'-0" POINT RAILS
AA	37'-0"	39'-0" POINT RAILS
FF	24'-0"	26'-0" POINT RAILS
HH	25'-0"	36'-7" POINT RAILS
PP	46'-0"	63'-3" POINT RAILS
QQ	11'-0"	13'-0" POINT RAILS

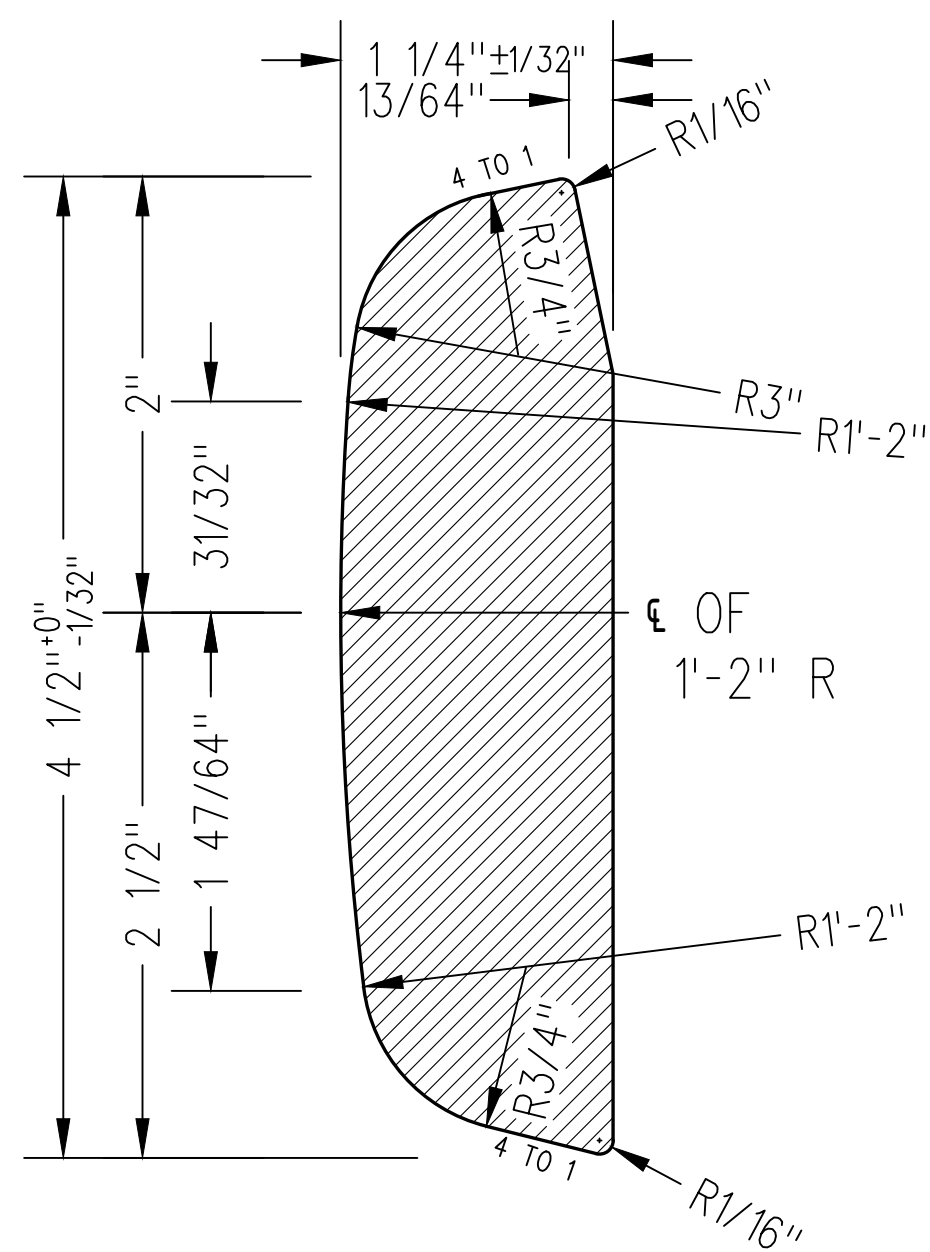
100 LB ARA-A RAIL



TYPICAL SECTION -15.3 LB./FT.

ITEM NO.	LENGTH	USED ON
M	13'-5"	16'-6" POINT RAILS
N	18'-3"	22'-0" POINT RAILS

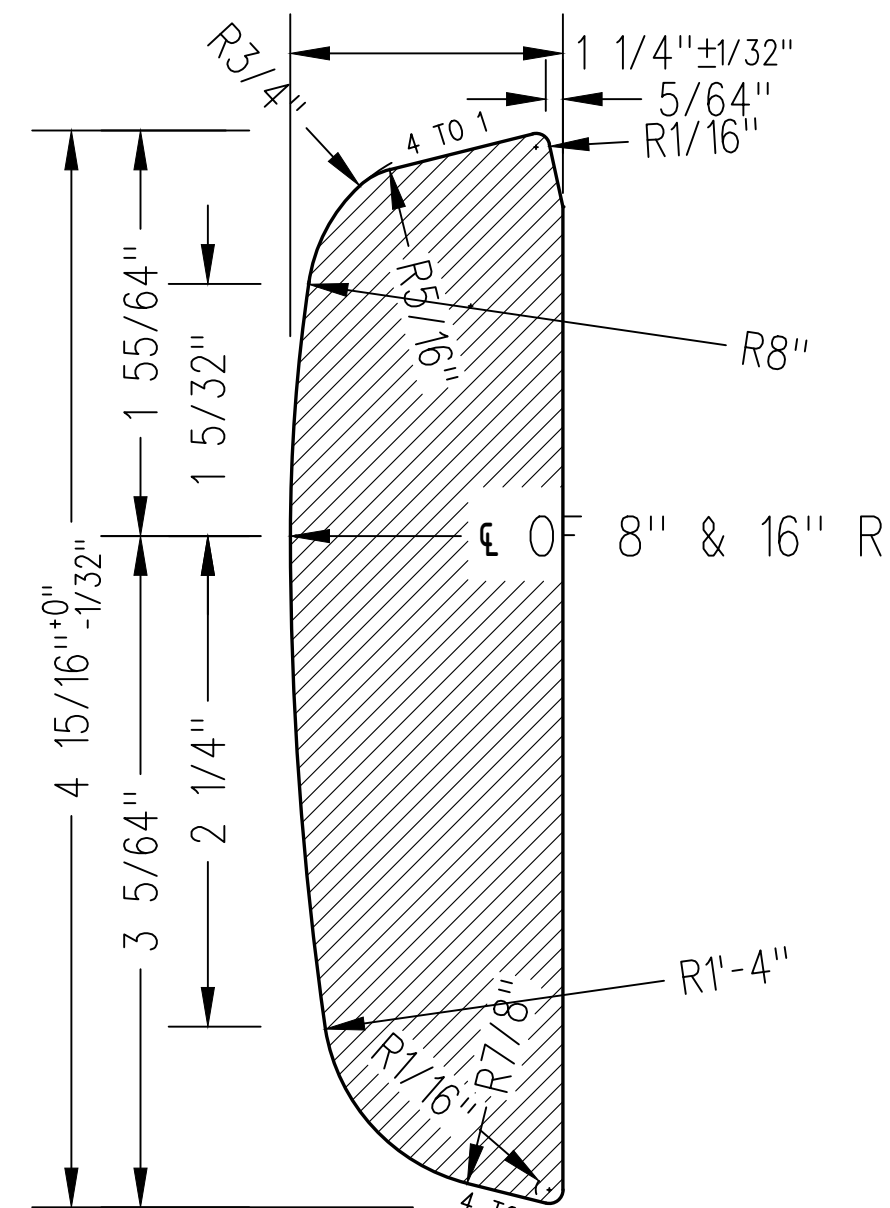
115 LB RE RAIL



TYPICAL SECTION -16.7 LB./FT.

ITEM NO.	LENGTH	USED ON
P	14'-3"	16'-6" POINT RAILS
R	19'-0"	22'-0" POINT RAILS
KK	25'-0"	36'-5" POINT RAILS
NN	20'-0"	31'-6" POINT RAILS

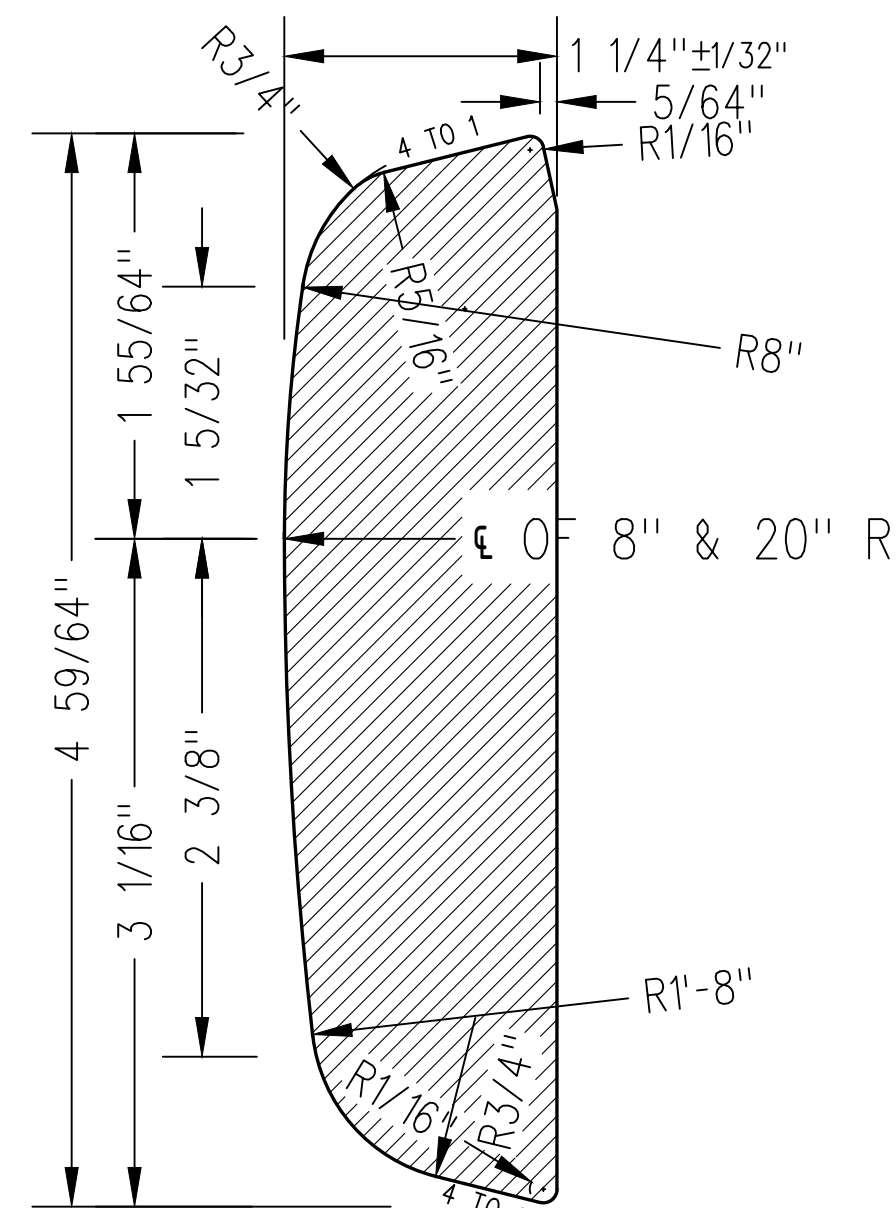
132 LB RE RAIL



TYPICAL SECTION -18.0 LB./FT.

ITEM NO.	LENGTH	USED ON
S	15'-0"	16'-6" POINT RAILS
T	20'-0"	22'-0" POINT RAILS
U	37'-0"	39'-0" POINT RAILS
V	31'-3"	33'-0" POINT RAILS

136 LB. RAIL



TYPICAL SECTION -18.1 LB./FT.

ITEM NO.	LENGTH	USED ON
BB	15'-0"	16'-6" POINT RAILS
CC	20'-0"	22'-0" POINT RAILS
DD	31'-3"	33'-0" POINT RAILS
EE	37'-0"	39'-0" POINT RAILS
GG	25'-0"	36'-7" POINT RAILS
JJ	24'-0"	37'-0" POINT RAILS
OO	46'-0"	63'-3" POINT RAILS

NOTES:

1. REINFORCING BARS UNABLE TO BE PURCHASED MUST BE PLANNED TO SUIT.
2. WHEN REFERRING TO REINFORCING BARS, DRAWING NUMBER MUST BE STATED AS A, B, C, ETC TO INDICATE SPECIFIC BAR REQUIRED

MATERIAL:

REINFORCING BAR TO CONFORM TO THE LATEST REVISION OF A.S.T.M. SPECIFICATION A675 (GRADE 50 OR 55), A576 (GRADE 1008, 1010, 1015, OR 1020), A36:
CHEMICAL REQUIREMENT:

	MINIMUM	MAXIMUM
CARBON	0.15%	0.25%
MANGANESE	0.30%	0.60%
PHOSPHORUS		0.04%
SULPHUR		0.05%

METRIC CONVERSION: 1 inch=25.4mm, 1 foot=304.8mm

No.	Date	Revision	By	Approved
1	18/07/27	ADDED IMPERIAL TO METRIC CONVERSION NOTE		

Standard / **REINFORCING BARS**
FOR 85 LB.- 136 LB. POINT RAILS
(MANUAL, POWER & SPRING OPERATION)

Drawn MG Checked GGS Approved *MG*
VP Engineering & Asset Management



Date DEC 15, 2017 Plan Number GTS-0342 Rev 1

REFERENCE: TS-342 A/QQ Sheet 1 OF 1