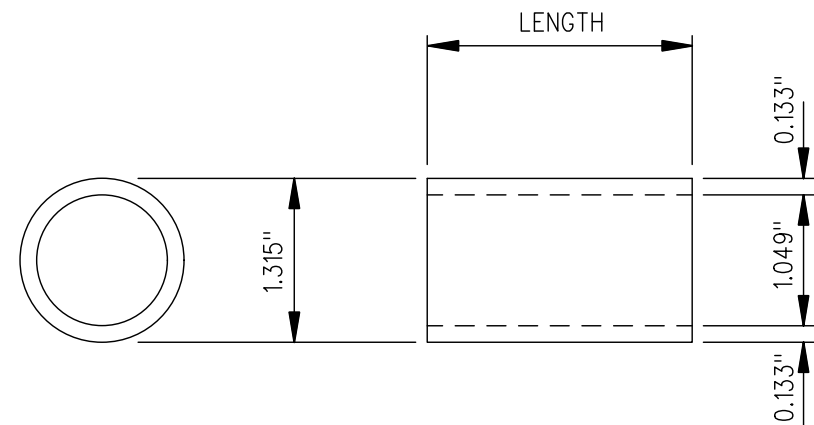
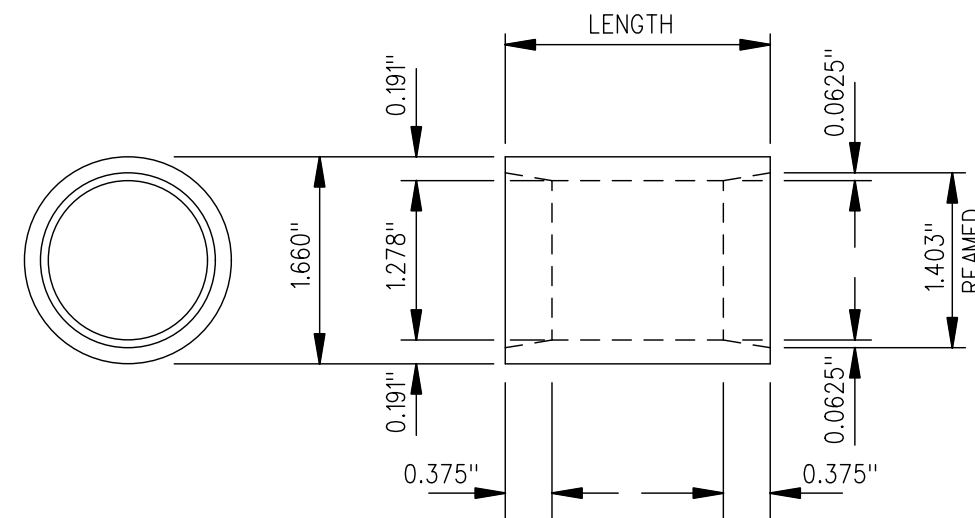


85, 100, 115 LB. RAIL THIMBLES



132 & 136 LB. RAIL THIMBLES



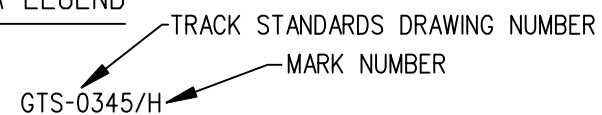
MARK No.	LENGTH	CROSS REFERENCE OLD MARK NO.	END USE*
85, 100, 115lb. RAIL THIMBLES-1" STEEL PIPE (A.I.S.C. CLASSIFICATION)			
A	1-27/32"	T63, T64	85lb. SWITCH POINTS (ALL LENGTHS), *12-100lb. SPRING FROG
B	2-1/32"	T4C, T61, T62	100lb. (16'-6" & 22' POINTS), *10-100lb. SPRING FROG
C	2-1/8"	T60, T66	100lb. (11' POINTS), 115lb. (22' POINTS), *12-115lb. SPRING FROG
D	2-3/16"	T65	115lb. (16'-6" POINTS)
132 & 136lb. RAIL THIMBLES-1-1/4" STANDARD STEEL PIPE (A.I.S.C. CLASSIFICATION)			
G	2-1/8"	T33, T34	132lb. SPRING FROGS
H	2-1/4"	T38, T32	132lb. SWITCH POINTS (33' & 39' POINTS)
J	2-3/8"	T35, T36	132lb. SWITCH POINTS (16'-8" & 22' POINTS), 136lb. *10 & *12 SPRING FROG
K	3-1/8"		136lb. SWITCH POINTS
L	2-1/2"		132lb. *8 ON 10 LAP TURNOUTS
M	3-1/4"		136lb. *8 ON 10 LAP TURNOUTS

*SWITCH POINT DERAILS (GTS-2202) USE THIMBLE FOR APPROPRIATE SIZE SWITCH POINT FROM ABOVE TABLE

NOTES:

1. ALL THIMBLES MUST HAVE THE MARK NUMBER IDENTIFIED IN A PERMANENT FASHION (ETCHED OR STAMPED) IN 3/8" MINIMUM CHARACTERS.
2. THIMBLES TO CONFORM IN GENERAL WITH LATEST REVISION OF A.S.T.M. SPECIFICATION (A-501) FOR HOT-FORMED WELDED AND SEAMLESS CARBON STEEL STRUCTURAL TUBING.
3. ALL THIMBLES TO HAVE A SMOOTH FINISH
4. WHEN REFERRING TO THIMBLES, DRAWING NUMBER MUST BE STATED AS GTS-0345A, B, C, ETC. TO INDICATE SPECIFIC THIMBLE REQUIRED.

NUMBER LEGEND



METRIC CONVERSION: 1 inch=25.4mm, 1 foot=304.8mm		
No.	Date	Revision
1	18/07/27	ADDED IMPERIAL TO METRIC CONVERSION NOTE
Standard/		By Approved
THIMBLES FOR 85,100,115,132&136 LB. TURNOUTS		
Drawn	Checked	Approved
MG	GGG	<i>[Signature]</i> VP Engineering & Asset Management
Date	Plan Number	Rev
SEPT 15/2017	GTS-0345	1
REFERENCE: TS-0345_R2		Sheet 1 OF 1



METROLINX