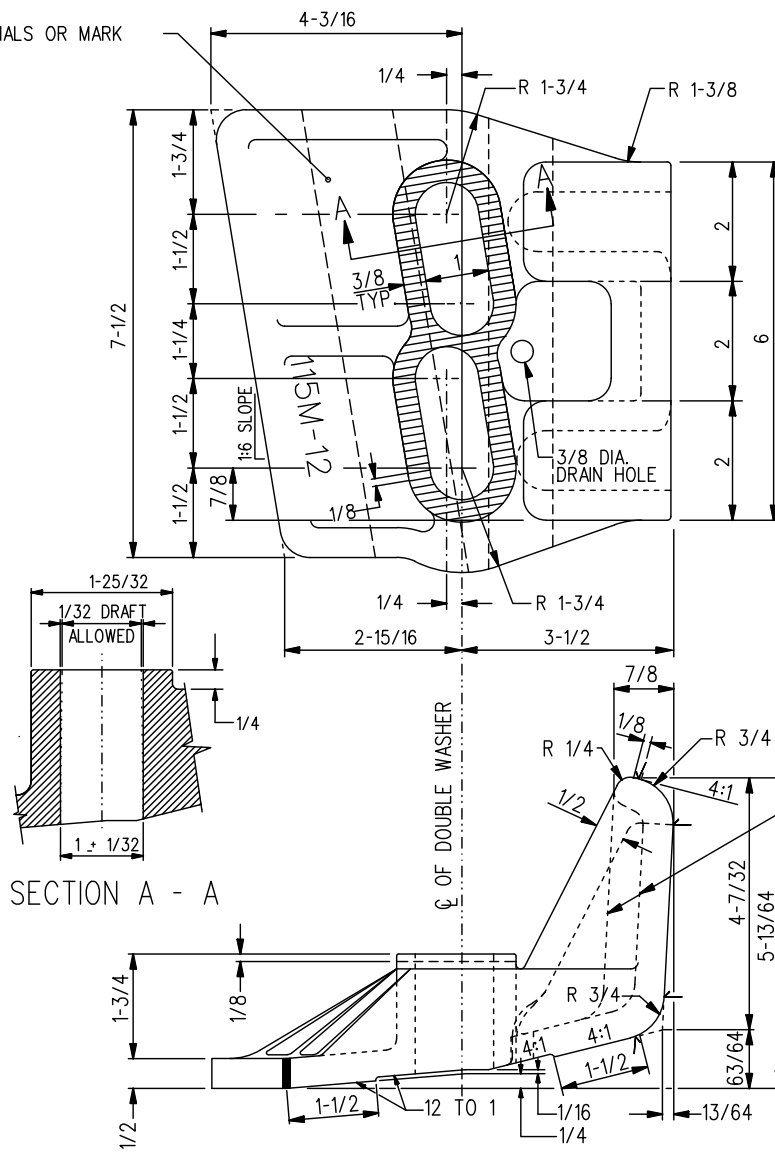
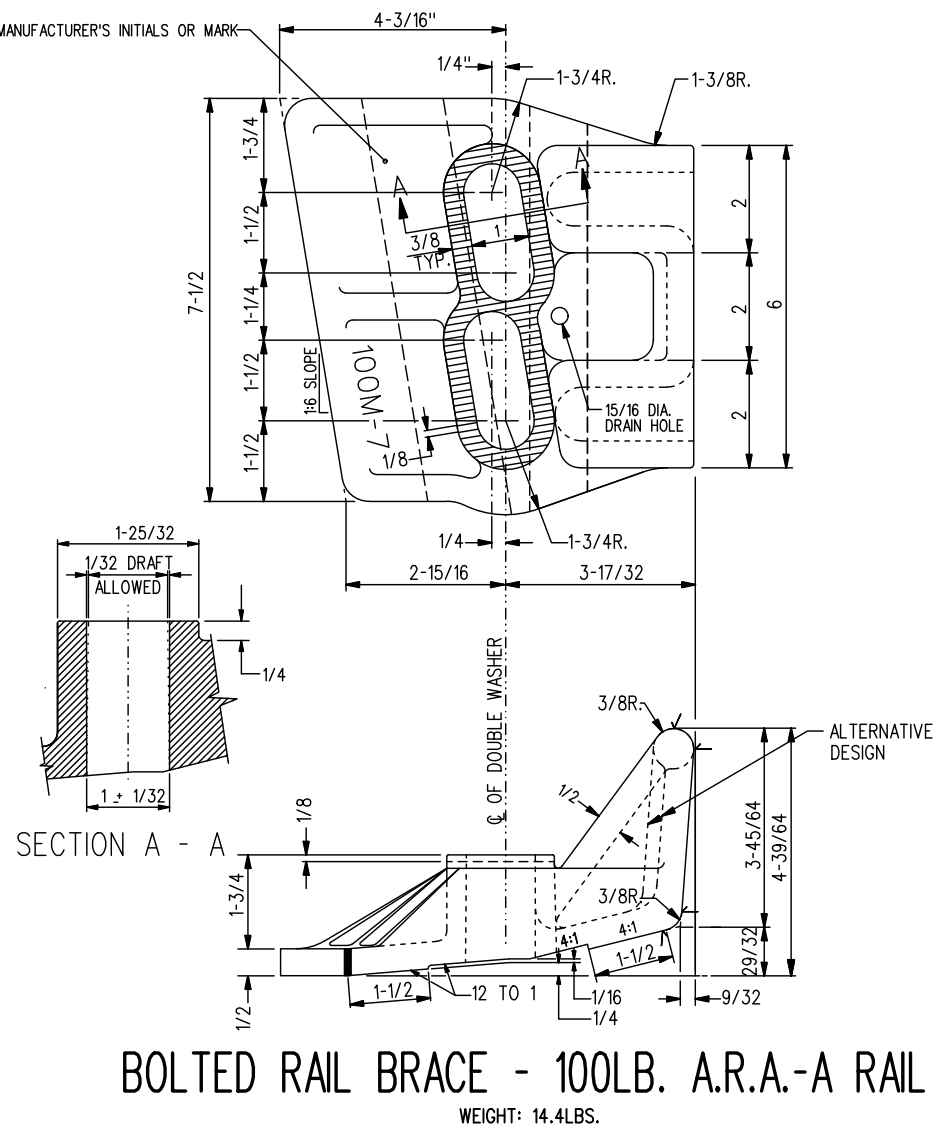


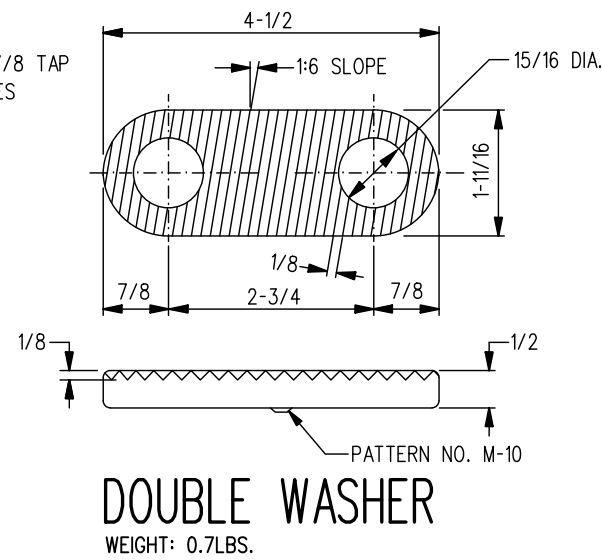
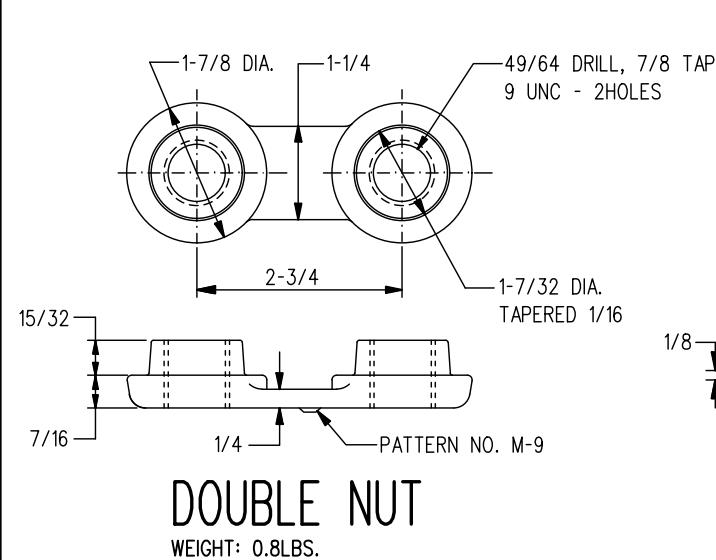
MANUFACTURER'S INITIALS OR MARK



MANUFACTURER'S INITIALS OR MARK



**BOLTED RAIL BRACE - 132 & 136LB. R.E. RAIL**      **BOLTED RAIL BRACE - 115LB. R.E. RAIL**  
 WEIGHT: 16.3LBS.



**NOTES:**

1. ALL DIMENSIONS ARE INCHES.
2. FINISHED SURFACES BETWEEN MARKS. MATING SURFACES AT THE FILLET RADIUS MUST BE FREE OF "LUMPS" OR "PROTRUSIONS" FROM THE CASTING.
3. PATTERN NUMBERS (RAIL BRACES 3/8 MIN.-DOUBLE WASHER AND NUT 1/4 MIN. HEIGHT) TO BE CLEARLY CAST ON EACH ITEM AS SHOWN.
4. 7/8 DIA. X 3-3/4 LG. BOLT, ON PLAN GTS-1308/5, TO BE USED WITH RAIL BRACES.
5. RAIL BRACES (BOLTED TYPE), DOUBLE WASHER AND DOUBLE NUT SHALL BE MADE OF DUCTILE IRON IN ACCORDANCE WITH THE LATEST REVISION OF ASTM STANDARD SPECIFICATION FOR DUCTILE CASTING ASTM 536 GRADE 65-45-12.
6. WHEN REFERRING TO BOLTED RAIL BRACES, DOUBLE WASHER AND DOUBLE NUT, DRAWING AND PATTERN NUMBERS MUST BE STATED TO INDICATE SPECIFIC ITEM REQUIRED.
7. THIS DRAWING SUPERSEDES STANDARD PLANS NO. R13C-6.2,-6.3,-6.4.

**METRIC CONVERSION: 1 inch=25.4mm, 1 foot=304.8mm**

No.	Date	Revision	By	Approved
1	18/07/27	ADDED IMPERIAL TO METRIC CONVERSION NOTE		

Standard / **BOLTED RAIL BRACE FOR 100,115,132&136 LB. RAILS**

Drawn MG      Checked GWM      Approved *[Signature]*  
 VP Engineering & Asset Management

**METROLINX**

Date SEPT 15/2017      Plan Number GTS-0354      Rev 1

REFERENCE: TS-0354\_3\_R6      Sheet 3 OF 3