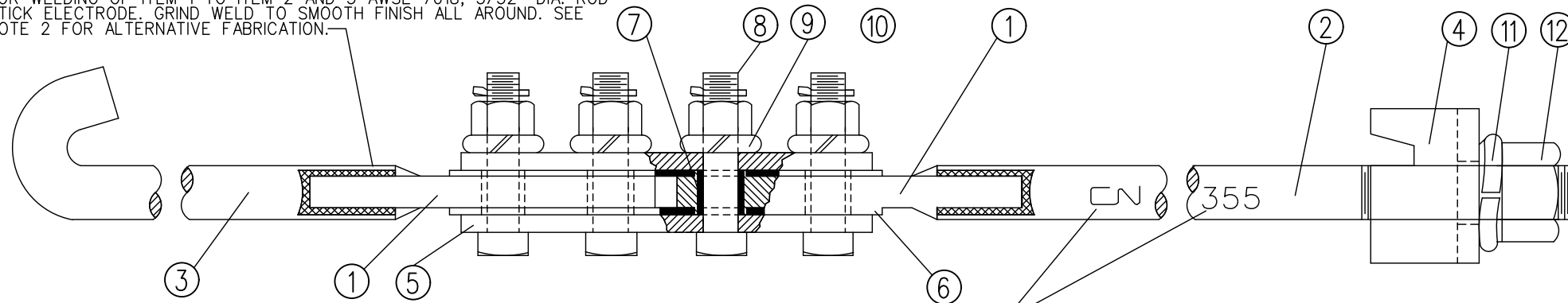


FOR WELDING OF ITEM 1 TO ITEM 2 AND 3 AWSE 7018, 5/32" DIA. ROD-STICK ELECTRODE. GRIND WELD TO SMOOTH FINISH ALL AROUND. SEE NOTE 2 FOR ALTERNATIVE FABRICATION.



**ASSEMBLY OF GAUGE ROD**

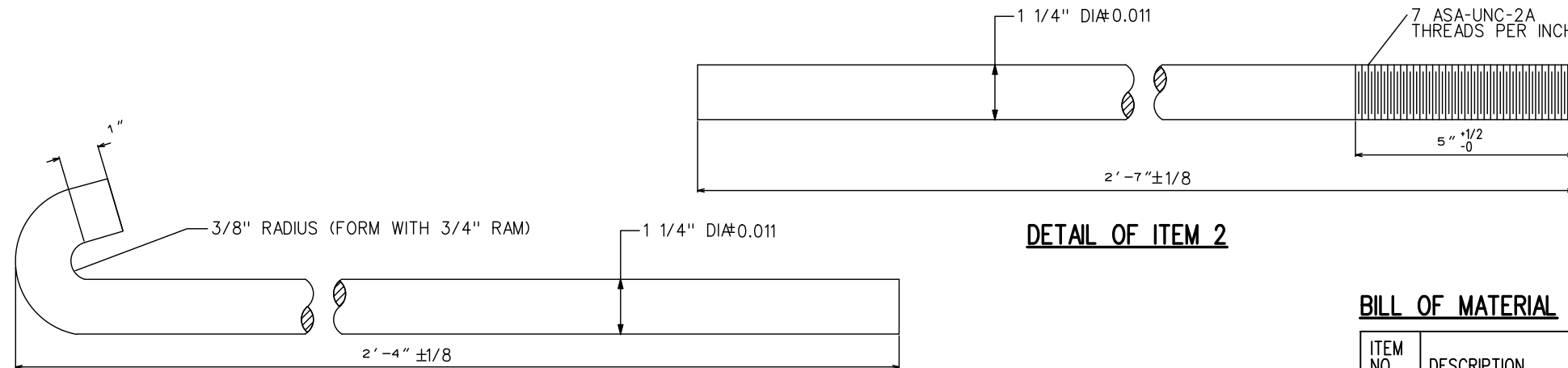
3/8" MINIMUM IDENTIFICATION CHARACTERS TO BE STAMPED PLAINLY ON SIDE OF BAR AS SHOWN, THE MANUFACTURER'S INITIALS OR MARK (3/8" MINIMUM CHARACTERS) TO BE STAMPED ON OTHER SIDE OF BAR.

**NOTES**

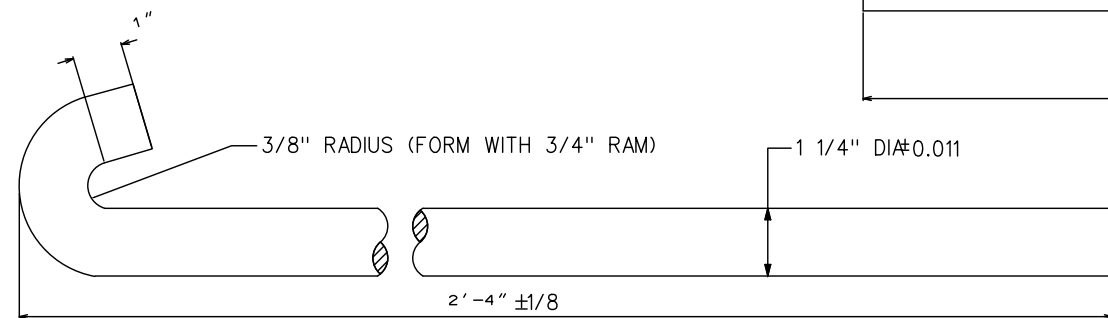
- 1-GAUGE RODS SHALL BE USED AND MAINTAINED PER THE INSTRUCTIONS IN GO TRACK STANDARDS 3300.
- 2-GAUGE ROD ITEM 1, MAY ALSO BE MADE BY UPSETTING AND FORMING THE 1-1/4" DIA. RODS TO SHAPE AND SIZE OF ITEM 1 IN LIEU OF THE WELDING PROCEDURE AS SHOWN
- 3-STEEL CHANNEL SHOE MAY BE SUBSTITUTED BY A FORGED OR CAST TYPE SHOE UPON APPROVAL BY CHIEF ENGINEER.
- 4-ALL HOLES SHALL BE DRILLED
- 5-HOLES USED FOR INSULATION BOLTS MUST BE RELIEVED.
- 6-THE USE OF ACETYLENE TORCH OR OTHER BURNING METHOD FOR CUTTING OR MAKING HOLES IN THE MANUFACTURE OF GAUGE ROD IS ABSOLUTELY PROHIBITED.
- 7-ALL METAL PARTS IN CONTACT WITH INSULATION SHALL HAVE SHARP EDGE AND BURRS OR OTHER FOREIGN MATTER REMOVED BEFORE ASSEMBLING.
- 8-DIELECTRIC REQUIREMENTS: DIELECTRIC TESTS SHALL BE MADE WITH THE INSULATION DRY. ASSEMBLED INSULATED TRACK FITTINGS SHALL WITHSTAND FOR NOT LESS THAN THREE SECONDS AN INSULATED TEST OF 1500 VOLTS A.C. WITHOUT FLASH-OVER OR PUNCTURE BETWEEN ALL METALLIC PARTS AND OTHER METALLIC PARTS INSULATED THEREFROM.

**MATERIALS**

- BAR STOCK TO CONFORM TO THE LATEST REVISION OF A.S.T.M. SPECIFICATION FOR COMMERCIAL QUALITY HOT ROLLED BAR STEEL A-675
- STEEL SHOE TO CONFORM IN GENERAL WITH THE LATEST REVISION OF A.S.T.M. SPECIFICATION FOR GENERAL REQUIREMENTS FOR HOT ROLLED AND COLD FINISHED CARBON ALLOY STEEL BARS A29.
- WEIGHT: 43 LBS. APPROXIMATELY



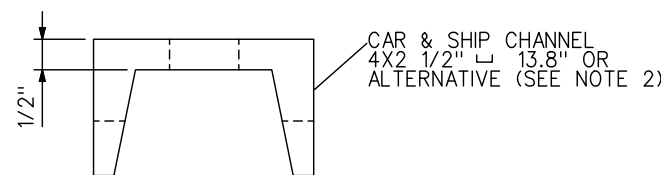
**DETAIL OF ITEM 2**



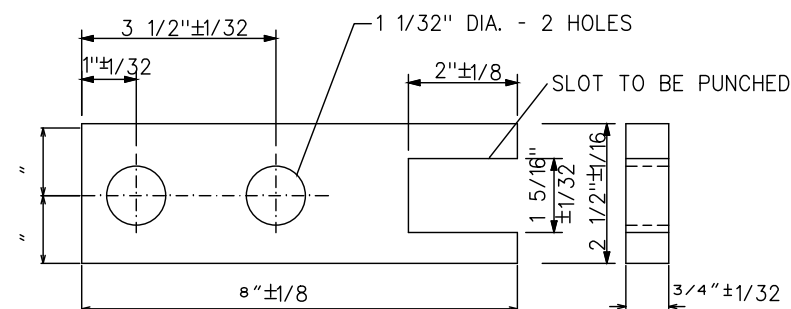
**DETAIL OF ITEM 3**

**BILL OF MATERIAL**

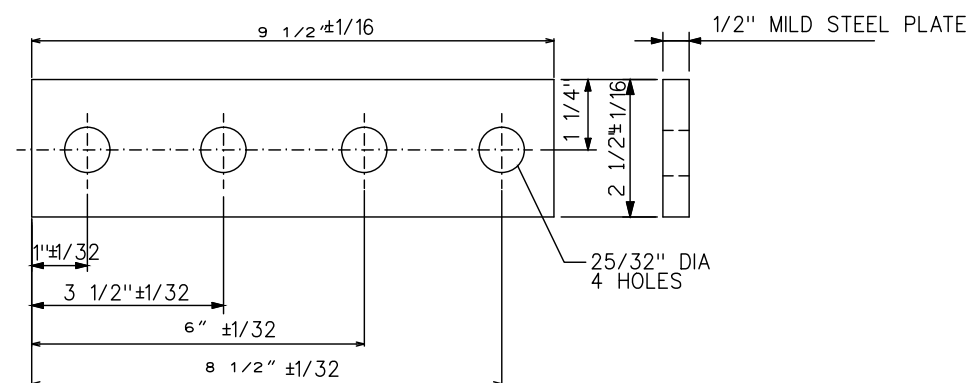
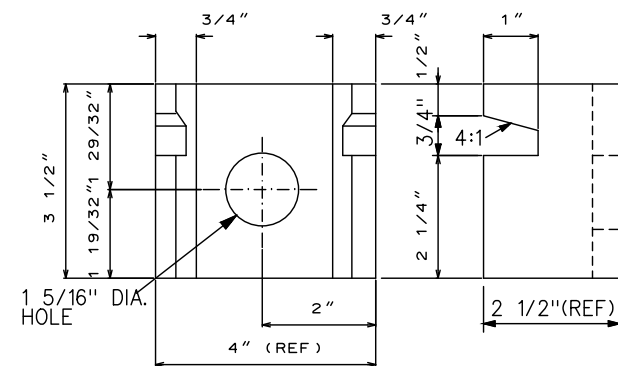
ITEM NO.	DESCRIPTION	STANDARD PLAN	QUANTITY
1	FLAT ROD	--	2
2	BAR ROD 2' 7" LONG	--	1
3	BAR ROD 2' 4" LONG	--	1
4	SHOE (STEEL CHANNEL OR CASTING)	--	1
5	SPLICE PLATE	GTS-0344	2
6	FIBRE PLATE	GTS-0344	2
7	FIBRE BUSHING	GTS-0344	4
8	3/4" DIA. - 10 UNC SQ.HD. BOLT X 3 3/4" LONG C/W HEX. NUT	GTS-1304/6	4
9	SPRING WASHER FOR 3/4" DIA. BOLT	GTS-1301	4
10	3/16" COTTER PIN X 1 1/4" LONG	--	4
11	SPRING WASHER FOR 1 1/4" DIA. BOLT	GTS-1301	1
12	HEAVY HEX. NUT FOR 1 1/4" DIA. BOLT	--	1



**DETAIL OF ITEM 4**



**DETAIL OF ITEM 1**



**DETAIL OF ITEM 5**

**METRIC CONVERSION: 1 inch=25.4mm, 1 foot=304.8mm**

1	18/07/27	ADDED IMPERIAL TO METRIC CONVERSION NOTE	
No.	Date	Revision	By Approved
Standard/		<b>INSULATED GAUGE RODS</b> 100,115,132 AND 136 LB.	
Drawn	MRC	Checked	NAM
		Approved	<i>[Signature]</i> VP Engineering & Asset Management
Date	SEPT 15/2017	Plan Number	GTS-0355
		Rev	1
REFERENCE: TS-0355_R3		Sheet 1 OF 1	



**METROLINX**