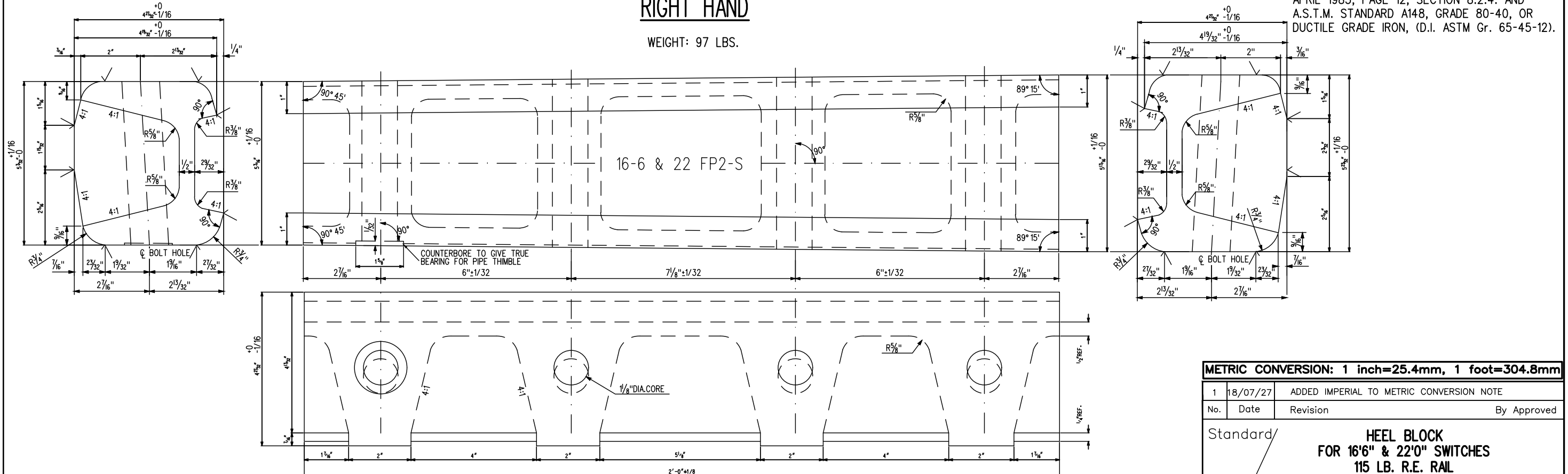


**RIGHT HAND**

WEIGHT: 97 LBS.



**LEFT HAND**

WEIGHT: 97 LBS.

**NOTES:**  
 -1/2" MIN. IDENTIFICATION CHARACTERS RAISED 1/32", TO BE CAST ON EACH BLOCK, AS SHOWN.  
 -DIMENSIONS ARE FOR FINISHED BLOCKS.  
 -PROPER ALLOWANCES MUST BE MADE FOR SHRINKAGE WHEN MAKING PATTERNS.  
 -ALL BEARING SURFACES SHALL BE FINISHED TO GIVE AN ACCURATE FIT AGAINST RAIL.  
 -"✓" FINISHED SURFACES BETWEEN MARKS.  
**MATERIAL:**  
 HEEL BLOCKS SHALL BE OF CAST STEEL IN ACCORDANCE WITH GO SPECIFICATION 12-9, APRIL 1983, PAGE 12, SECTION 8.2.4. AND A.S.T.M. STANDARD A148, GRADE 80-40, OR DUCTILE GRADE IRON, (D.I. ASTM Gr. 65-45-12).

**METRIC CONVERSION: 1 inch=25.4mm, 1 foot=304.8mm**

1	18/07/27	ADDED IMPERIAL TO METRIC CONVERSION NOTE	
No.	Date	Revision	By Approved

Standard / **HEEL BLOCK FOR 16'6" & 22'0" SWITCHES 115 LB. R.E. RAIL**

Drawn MRC Checked AWW Approved *[Signature]* VP Engineering & Asset Management



Date SEPT 15/2017 Plan Number GTS-0359 Rev 1

REFERENCE: TS-0359\_R3 Sheet 1 OF 1