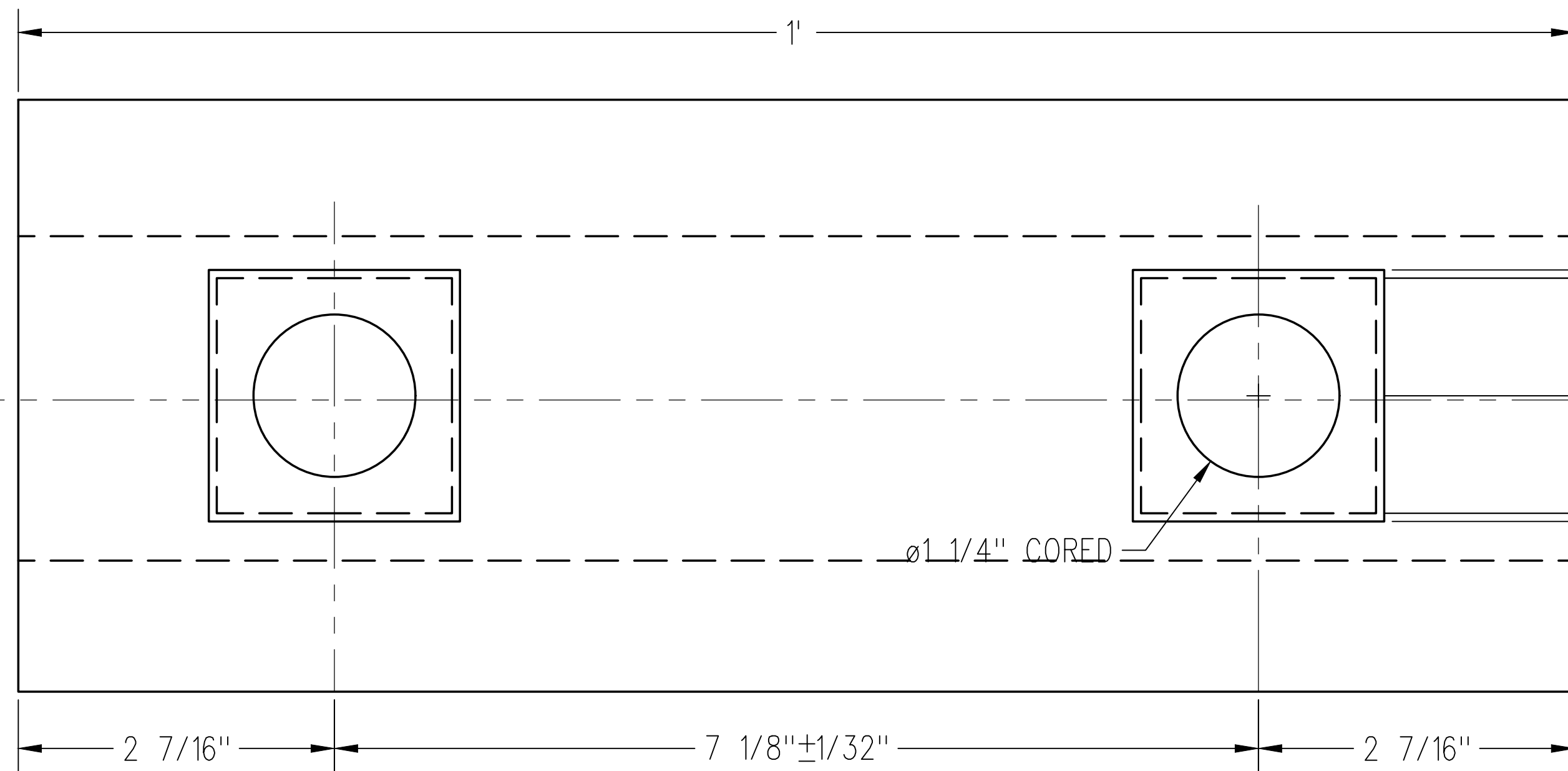
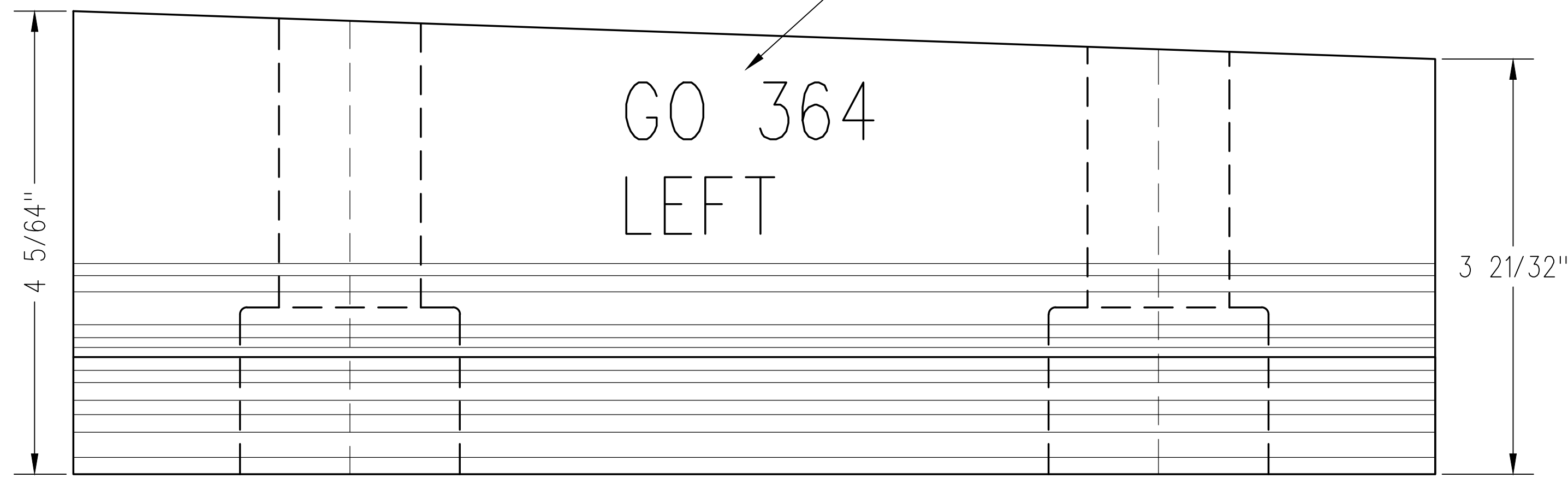
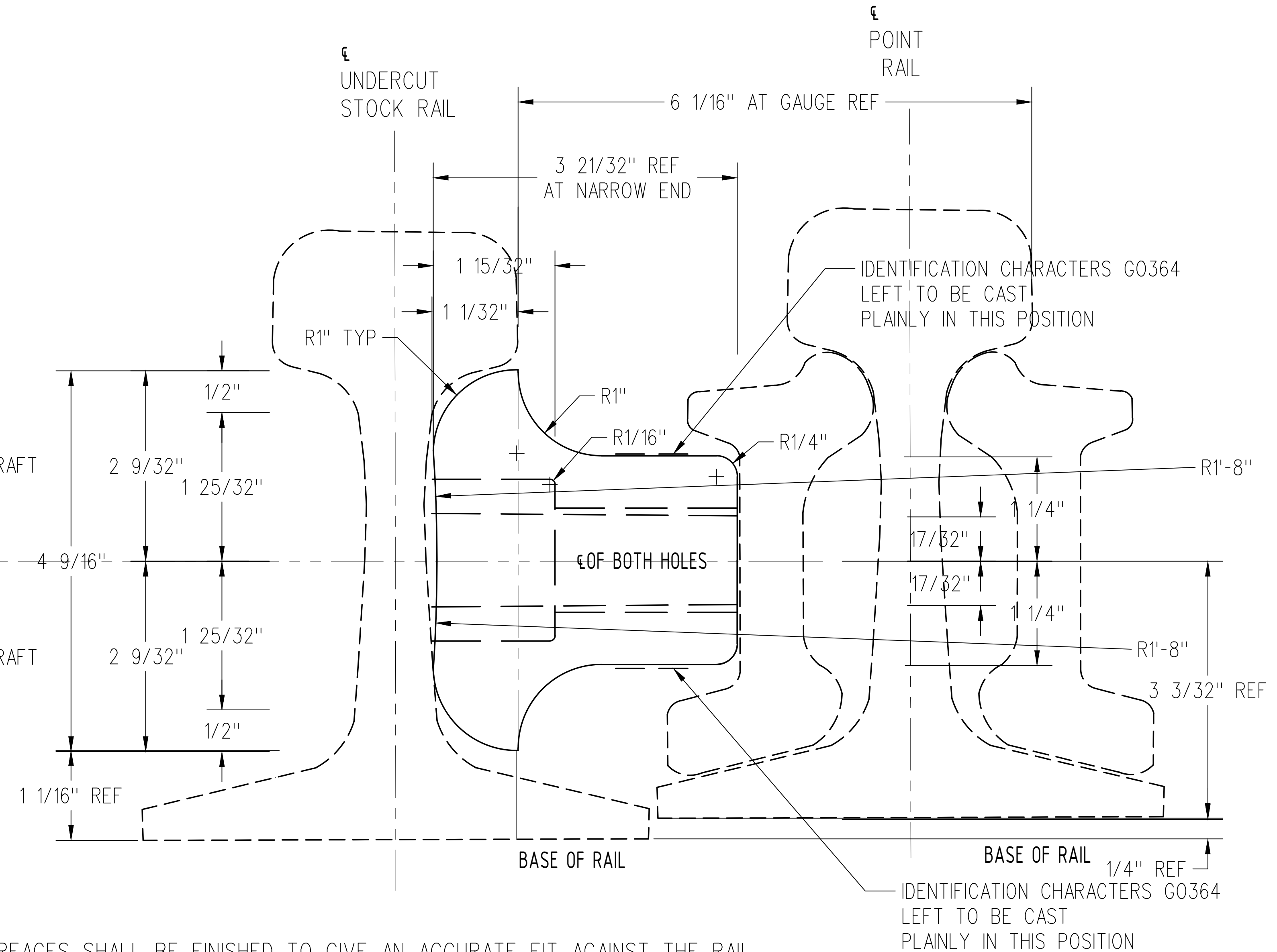


IDENTIFICATION OF CHARACTERS TO BE CAST
1/2" MINIMUM HEIGHT AS SHOWN



HEEL BLOCK



MATERIAL:

ALL HEEL BLOCKS, UNLESS OTHERWISE SPECIFIED, ARE TO BE MADE ACCORDING TO THE LATEST REVISION OF GO TRANSIT TRACK STANDARD OR IN GENERAL WITH LATEST REVISION OF A.S.T.M. SPECIFICATION FOR: MALLEABLE IRON A47, GRADE 32510 OR DUCTILE IRON A536, GRADE 65-45-12

NOTES

1. ALL BEARING SURFACES SHALL BE FINISHED TO GIVE AN ACCURATE FIT AGAINST THE RAIL.
2. DIMENSIONS ARE FOR FINISHED BLOCKS. PROPER ALLOWANCE MUST BE MADE FOR SHRINKAGE WHEN MAKING PATTERNS.
3. 1/2" MINIMUM IDENTIFICATION CHARACTERS, RAISED 1/32", TO BE CAST ON THE BLOCK.
4. ALL SHARP EDGES TO BE ROUNDED TO 1/8" R
5. HOLES TO BE CORED OR DRILLED, THE USE OF ACETYLENE TORCH OR OTHER BURNING METHOD FOR THE MAKING OF HOLES OR CUTTING IN THE MANUFACTURE OF HEEL BLOCKS IS ABSOLUTELY PROHIBITED.
6. ALL TOLERANCES TO BE ±1/32" (NON-CUMULATIVE).

METRIC CONVERSION: 1 inch=25.4mm, 1 foot=304.8mm

No.	Date	Revision	By	Approved
1	18/07/27	ADDED IMPERIAL TO METRIC CONVERSION NOTE		

Standard / **NO. 8 & 10 TURNOUT-16'6" POINTS
HEEL BLOCK
136LB. R.E. RAIL**

Drawn MG Checked GGS Approved *[Signature]*
VP Engineering & Asset Management



Date DEC 15, 2017 Plan Number GTS-0364 Rev 1

REFERENCE: TS-364 Sheet 1 OF 1