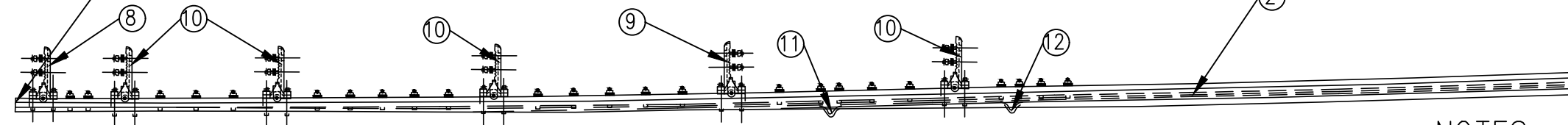


ASSEMBLY OF 36'-5" CURVED SAMSON POINT RAIL
 DRAWING NO. GTS-0381/B(ILLUSTRATED)
 LEFT POINT RAIL FOR RIGHT HAND TURNOUT
 DRAWING NO. GTS-0381A (OPPOSITE HAND)
 LEFT POINT RAIL FOR RIGHT HAND TURNOUT

A
 BOLTS SUPPLIED & INSTALLED WITH
 FRONT ROD BY SIGNAL DEPT



ASSEMBLY OF 36'-5" CURVED SAMSON POINT RAIL
 DRAWING NO. GTS-0381/D(ILLUSTRATED)
 RIGHT POINT RAIL FOR RIGHT HAND TURNOUT
 DRAWING NO. GTS-0381C (OPPOSITE HAND)
 LEFT POINT RAIL FOR LEFT HAND TURNOUT

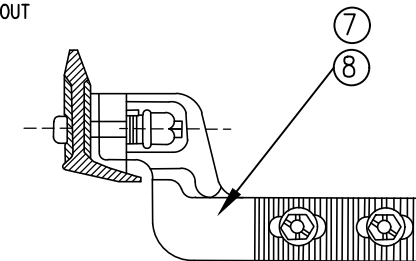
NOTES

CONVERSION FACTOR: 1 INCH=25.4mm, 1
 FOOT=304.8mm

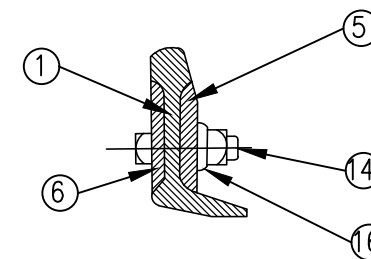
WHEN REFERRING TO POINT RAILS, DRAWING NO.
 MUST BE STATED AS A, B,C OR D INDICATE
 SPECIFIC POINT REQUIRED.

NO.12 TURNOUT (CURVED SWITCH) GTS-0284 A/D

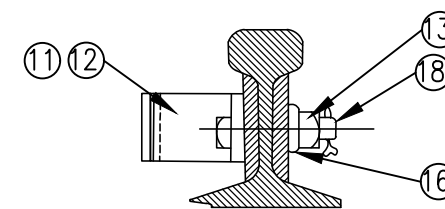
RIGHT HAND TURNOUT
 GTS-0381B LEFT SAMSON CURVED POINT RAIL
 GTS-0381D RIGHT SAMSON CURVED POINT RAIL
 LEFT HAND TURNOUT
 GTS-0381A RIGHT SAMSON CURVED POINT RAIL
 GTS-0381C LEFT SAMSON CURVED POINT RAIL



CLIP ASSEMBLY



SECTION A



STOP ASSEMBLY

ITEM NO.	DESCRIPTION	STANDARD PLAN NO.	MARK NO.	QUANTITY			
				DWG.NO.GTS-0332			
				A	B	C	D
1	LEFT SAMSON CURVED POINT RAIL	GTS-0440	-	-	1	-	-
2	RIGHT SAMSON STRAIGHT POINT RAIL	GTS-0440	-	-	-	-	1
3	RIGHT SAMSON CURVED POINT RAIL	GTS-0440	-	1	-	-	-
4	LEFT SAMSON STRAIGHT POINT RAIL	GTS-0440	-	-	-	1	-
5	REINFORCING BAR 1 1/4" THK X 25'-0" LONG.	GTS-0342/KK	-	1	1	1	1
6	REINFORCING BAR 1/2" THK X 25'-0" LONG.	GTS-0342/LL	-	1	1	1	1
7	RIGHT HAND "MJ"-RACOR CLIP (ABEX NO. HB-503A)	GTS-0352/J	-	-	1	1	-
8	LEFT HAND "MJ"-RACOR CLIP (ABEX NO. HB-503A)	GTS-0352/K	-	1	-	-	1
9	RIGHT HAND "MJ"-RACOR CLIP (ABEX NO. HB-503B)	GTS-0352/L	-	1	4	4	1
10	LEFT HAND "MJ"-RACOR CLIP (ABEX NO. HB-503B)	GTS-0352/M	-	4	1	1	4
11	STOP BLOCK NO.1	GTS-0339/N	-	1	1	1	1
12	STOP BLOCK NO.2	GTS-0339/L	-	1	1	1	1
13	3/4" DIA-10 UNC SQ.HD.BOLT X 4 3/4" LG.C/W SQ.NUT	GTS-1305/9	-	4	4	4	4
14	1" DIA-8 UNC SQ.HD.BOLT X 4-1/4" LG.C/W SQ.NUT	GTS-1309/24	-	15	15	15	15
15	1" DIA-8 UNC SQ.HD.BOLT(3/8" HD) X 4-1/4" LG.C/W SQ.NUT	GTS-1309/25	-	5	5	5	5
16	SPRING WASHER FOR 3/4" DIA BOLT	GTS-1301	-	4	4	4	4
17	SPRING WASHER FOR 1" DIA BOLT	GTS-1301	-	20	20	20	20
18	3/16" COTTER PIN X 1-1/4" LONG		-	4	4	4	4
19	IDENTIFICATION TAG		-	1	1	1	1

METRIC CONVERSION: 1 inch=25.4mm, 1 foot=304.8mm

1	18/07/27	ADDED IMPERIAL TO METRIC CONVERSION NOTE	
No.	Date	Revision	By Approved

Standard /	ASSEMBLY-UNIFORM RISER DESIGN 36'-5" SAMSON POINT RAIL NO.12 EQUILATERAL ALL WELDED TURNOUT FOR MANUAL, SPRING AND POWER OPERATED-115LB.R.E.RAIL		
Drawn	Checked	Approved	VP Engineering & Asset Management



Date	DEC 15, 2017	Plan Number	GTS-0381	Rev	1
------	--------------	-------------	----------	-----	---