

ASSEMBLY OF 31'-6" CURVED SAMSON POINT RAIL
 DRAWING NO. GTS-0385/B(ILLUSTRATED)
 LEFT POINT RAIL FOR RIGHT HAND TURNOUT
 DRAWING NO. GTS-0385A (OPPOSITE HAND)
 LEFT POINT RAIL FOR RIGHT HAND TURNOUT

ASSEMBLY OF 31'-6" CURVED SAMSON POINT RAIL
 DRAWING NO. GTS-0385/D(ILLUSTRATED)
 RIGHT POINT RAIL FOR RIGHT HAND TURNOUT
 DRAWING NO. GTS-0385C (OPPOSITE HAND)
 LEFT POINT RAIL FOR LEFT HAND TURNOUT

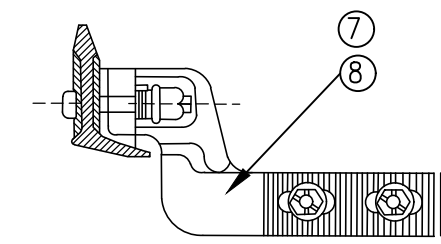
A
 BOLTS SUPPLIED & INSTALLED WITH
 FRONT ROD BY SIGNAL DEPT

NOTES

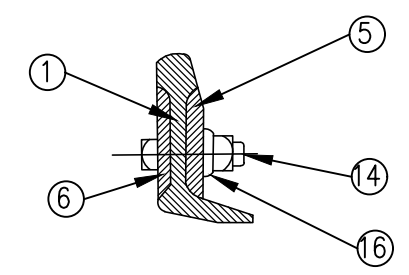
WHEN REFERRING TO POINT RAILS, DRAWING NO. MUST BE STATED AS A, B,C OR D INDICATE SPECIFIC POINT REQUIRED.

NO.10 TURNOUT (CURVED SWITCH) GTS-0284 A/D

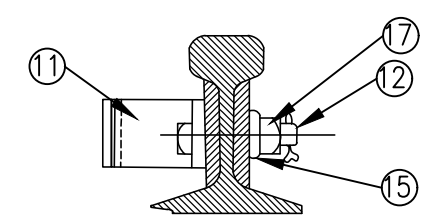
RIGHT HAND TURNOUT
 GTS-0385B LEFT SAMSON CURVED POINT RAIL
 GTS-0385D RIGHT SAMSON CURVED POINT RAIL
 LEFT HAND TURNOUT
 GTS-0385A RIGHT SAMSON CURVED POINT RAIL
 GTS-0385C LEFT SAMSON CURVED POINT RAIL



CLIP ASSEMBLY



SECTION A



STOP ASSEMBLY

ITEM NO.	DESCRIPTION	STANDARD PLAN NO.	MARK NO.	QUANTITY			
				A	B	C	D
				DWG.NO.GTS-0332			
				A	B	C	D
1	LEFT SAMSON CURVED POINT RAIL	GTS-0442	-	-	1	-	-
2	RIGHT SAMSON STRAIGHT POINT RAIL	GTS-0442	-	-	-	-	1
3	RIGHT SAMSON CURVED POINT RAIL	GTS-0442	-	1	-	-	-
4	LEFT SAMSON STRAIGHT POINT RAIL	GTS-0442	-	-	-	1	-
5	REINFORCING BAR 1 1/4" THK X 20'-0" LONG.	GTS-0342/NN	-	1	1	1	1
6	REINFORCING BAR 1/2" THK X 20'-0" LONG.	GTS-0342/MM	-	1	1	1	1
7	RIGHT HAND "MJ"-RACOR CLIP (ABEX NO. HB-503A)	GTS-0352/J	-	-	1	1	-
8	LEFT HAND "MJ"-RACOR CLIP (ABEX NO. HB-503A)	GTS-0352/K	-	1	-	-	1
9	RIGHT HAND "MJ"-RACOR CLIP (ABEX NO. HB-503B)	GTS-0352/L	-	1	3	3	1
10	LEFT HAND "MJ"-RACOR CLIP (ABEX NO. HB-503B)	GTS-0352/M	-	3	1	1	3
11	STOP BLOCK	GTS-0339/N	-	1	1	1	1
12	3/4" DIA-10 UNC SQ.HD.BOLT X 4 3/4" LG.C/W SQ.NUT	GTS-1305/9	-	2	2	2	2
13	1" DIA-8 UNC SQ.HD.BOLT X 4-1/4" LG.C/W SQ.NUT	GTS-1309/24	-	12	12	12	12
14	1" DIA-8 UNC SQ.HD.BOLT(3/8" HD) X 4-1/4" LG.C/W SQ.NUT	GTS-1309/25	-	5	5	5	5
15	SPRING WASHER FOR 3/4" DIA BOLT	GTS-1301	-	2	2	2	2
16	SPRING WASHER FOR 1" DIA BOLT	GTS-1301	-	17	17	17	17
17	3/16" COTTER PIN X 1-1/4" LONG		-	2	2	2	2
18	IDENTIFICATION TAG	M-151	-	1	1	1	1

METRIC CONVERSION: 1 inch=25.4mm, 1 foot=304.8mm

1	18/07/27	ADDED IMPERIAL TO METRIC CONVERSION NOTE	
No.	Date	Revision	By Approved

Standard / **ASSEMBLY-UNIFORM RISER DESIGN**
31'-6" SAMSON POINT RAIL
NO.10 EQUILATERAL ALL WELDED TURNOUT
FOR MANUAL, SPRING AND POWER OPERATED-115LB. R.E. RAIL

Drawn _____ Checked _____ Approved _____
 VP Engineering & Asset Management



METROLINX

Date DEC 15, 2017 Plan Number GTS-0385 Rev 1

REFERENCE: TS-385 A/B Sheet 1 OF 1