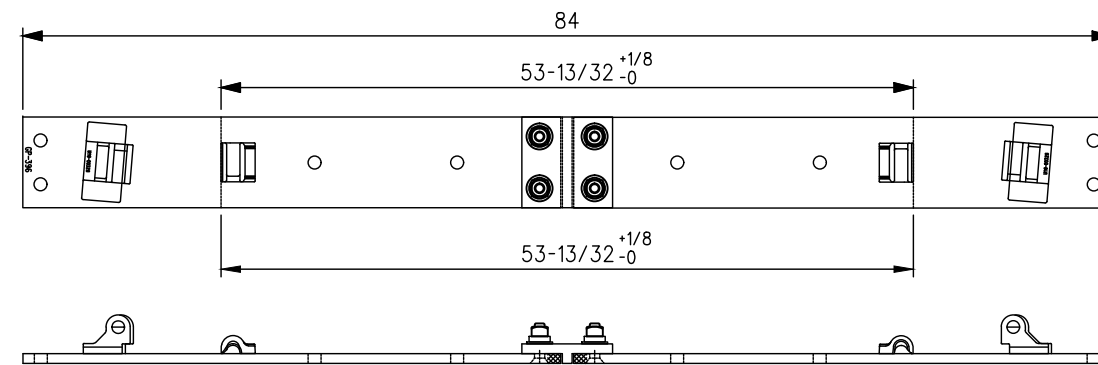


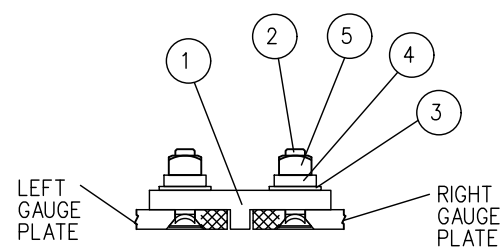
TYPICAL 2ND AND 3RD GAUGE PLATE ASSEMBLY



GP396/GP396 INSULATED PLATE ASSEMBLY

WEIGHT 180 LBS.

BILL OF MATERIAL					
WEIGHT	GAUGE PLATE MARK NUMBERS		STANDARD PLAN NO.	CRITICAL DIMENSIONS	
	RIGHT SIDE	LEFT SIDE		X	Y
164	397LV	398LV	GTS-0525	53-7/16	53-3/8
164	397LV	399LV	GTS-0525	53-21/32	53-19/32
164	400LV	397LV	GTS-0525	53-7/16	53-3/8
164	401LV	397LV	GTS-0525	53-21/32	53-19/32
164	397LV	402LV	GTS-0525	53-7/16	53-3/8
164	397LV	403LV	GTS-0525	53-21/32	53-19/32
164	404LV	397LV	GTS-0525	53-7/16	53-3/8
164	405LV	397LV	GTS-0525	53-21/32	53-19/32
164	397LV	406LV	GTS-0525	53-15/32	53-3/8
164	397LV	407LV	GTS-0525	53-25/32	53-11/16
164	408LV	397LV	GTS-0525	53-1/2	53-13/32
164	409LV	397LV	GTS-0525	53-13/16	53-23/32
164	397LV	410LV	GTS-0525	53-7/16	53-3/8
164	397LV	411LV	GTS-0525	53-5/8	53-9/16
164	412LV	397LV	GTS-0525	53-7/16	53-3/8
164	413LV	397LV	GTS-0525	53-21/32	53-19/32
164	397LV	414LV	GTS-0525	53-15/32	53-13/32
164	347LV	415LV	GTS-0525	53-11/16	53-5/8
164	416LV	397LV	GTS-0525	53-15/32	53-13/32
164	417LV	397LV	GTS-0525	53-11/16	53-5/8



INSULATED PLATE ASSEMBLY DETAIL

THE FOLLOWING ITEMS ARE INCLUDED IN THE GAUGE PLATE ASSEMBLY:

ITEM	QTY	DESCRIPTION
1	1	INSULATION FOR 3/4" THICK GAUGE PLATE, , 3/4" x 7" x 7"
2	4	PLOW BOLT, 3/4" DIA. X 3-1/2" LONG, ROUND HEAD, SQUARE NECK, Gr. 5
3	4	WASHER, 3/4" DIA., PLAIN, TYPE 'A' WIDE, 13/16" X 2" X 0.148"
4	4	SPRING WASHER, 3/4" DIA.
5	4	NUT, 3/4" DIA., HEAVY SQUARE, Gr. 5

POWER						
T.O.	RIGHT HAND			LEFT HAND		
#10	GP396LV	GP397LV	GP397LV			
				GP396LV	GP398LV	GP399LV
#12	GP396LV	GP397LV	GP397LV			
				GP396LV	GP402LV	GP403LV
#15	GP396LV	GP397LV	GP397LV			
				GP396LV	GP414LV	GP415LV
#16	GP396LV	GP397LV	GP397LV			
				GP396LV	GP406LV	GP407LV
#20	GP396LV	GP397LV	GP397LV			
				GP396LV	GP410LV	GP411LV

NOTES:

- DIELECTRIC REQUIREMENT: DIELECTRIC TESTS SHALL BE MADE WITH THE INSULATION DRY. ASSEMBLED INSULATED TRACK FITTINGS SHALL WITHSTAND FOR NOT LESS THAN THREE SECONDS AN INSULATED TEST OF 1500 VOLTS A.C. WITHOUT FLASH OVER OR PUNCTURE BETWEEN ALL METALLIC PARTS AND OTHER METALLIC PARTS INSULATED THEREFROM.
- WHEN REFERRING TO A COMPLETE GAUGE PLATE ASSEMBLY AS SHOWN, MARK NUMBER OF BOTH GAUGE PLATE HALVES MUST BE STATED (EX. GP412/GP397) TO IDENTIFY THE ACTUAL GAUGE PLATE.
- THE RIGHT SIDE GAUGE PLATE HALF IS STATED FIRST IN ALL INSTANCES.

METRIC CONVERSION: 1 inch=25.4mm, 1 foot=304.8mm

1	18/07/27	ADDED IMPERIAL TO METRIC CONVERSION NOTE	
No.	Date	Revision	By Approved

Standard / **ASSEMBLY INSULATED GAUGE PLATES FOR 136 LB. WELDED T/O ON WOODRAILS**

Drawn PCV Checked DL Approved *DL* VP Engineering & Asset Management



Date SEPT 15/2017 Plan Number GTS-0523 Rev 1