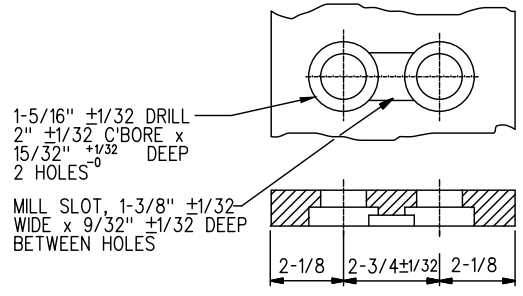
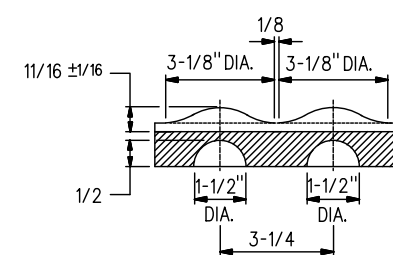


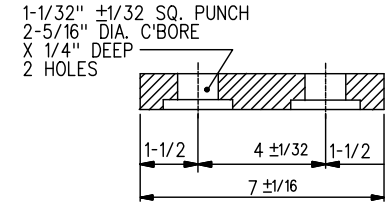
TYPICAL PLATE FOR RIGHT HAND TURNOUT-MACHINE MOUNTING



SECTION A-A



SECTION B-B
FORMED BRACE STOPS



SECTION C-C

NOTES

- IDENTIFICATION CHARACTERS (3/4" MINIMUM HEIGHT) TO BE STAMPED ON EACH PLATE AS SHOWN.
- 1/4"x2"x5 1/2 " SPECIAL PAD TO BE WELDED 3 SIDES- 1/4" FILLET OR TWO 3 1/8" DIA. BOSSES 1/2" DEEP AND SPREAD 3 1/4" APART SYMMETRICAL ABOUT SECTION B-B.
- INSULATION BOLT HOLES MUST HAVE BURRS REMOVED.
- ALL HOLES TO BE PUNCHED OR DRILLED. THE USE OF ACETYLENE TORCH OR OTHER BURNING METHOD FOR THE MAKING OF HOLES OR CUTTING IN THE MANUFACTURE OF GAUGE PLATES IS ABSOLUTELY PROHIBITED.
- WHEN REFERRING TO GAUGE PLATE (HALVES), PLAN AND PLATE NUMBER MUST BE STATED TO INDICATE SPECIFIC PLATE REQUIRED.
- FOR ASSEMBLY OF GAUGE PLATES, SEE PLANS GTS-0522, GTS-0523.
- THE ADJOINING ENDS OF ALL GAUGE PLATE HALVES TO BE PAINTED WITH GLYPTAL G-1201 RED SEMI-GLOSS FINE INSULATING PAINT AS SHOWN.

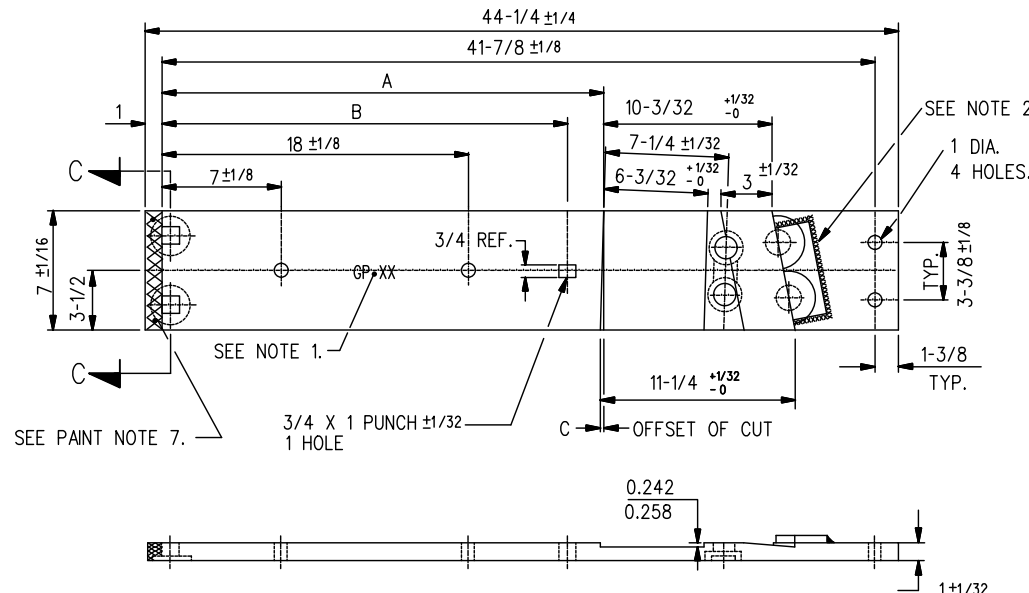
MATERIAL

PLATES TO CONFORM TO THE LATEST REVISION OF A.S.T.M. SPECIFICATION A-36 FOR COMMERCIAL QUALITY HOT ROLLED BAR STEEL CHEMICAL REQUIREMENT.

	MINIMUM	MAXIMUM
CARBON	0.25 %	0.29 %
MANGANESE	0.60 %	1.20 %
PHOSPHORUS		0.04 %
SULPHUR		0.05 %
SILICON		0.40 %

DIMENSIONS

GAUGE PLATES	A +1/32 -0	B ±1/16	C ±1/64	D +1/32 -0	E ±1/16	F ±1/64
GP 101	2'-1 11/32"	1'-11 11/32"	0"	---	---	---
GP 105	2'-1 15/16"	1'-11 13/16"	13/64"	---	---	---
GP 106	2'-2 9/16"	---	13/64"	---	---	---
GP 112	2'-3 5/32"	---	13/64"	---	---	---
GP 115	2'-2 3/8"	---	5/32"	---	---	---
GP 116	2'-2 13/16"	---	5/32"	---	---	---
GP 121	2'-1 1/2"	1'-11 1/2"	3/64"	---	---	---
GP 122	2'-1 11/16"	---	3/64"	---	---	---
GP 128	2'-2 17/32"	---	13/64"	---	---	---
GP 130	2'-1 7/8"	1'-11 13/16"	5/32"	---	---	---
GP 135	2'-1 27/32"	1'-11 3/4"	7/64"	---	---	---
GP 136	2'-2 5/32"	---	7/64"	---	---	---
GP 141	2'-1 9/16"	1'-11 9/16"	3/64"	---	---	---
GP 142	2'-1 23/32"	---	3/64"	---	---	---
GP 151	2'-1 15/32"	1'-11 3/8"	7/64"	---	---	---
GP 152	2'-1 25/32"	---	7/64"	---	---	---
GP 159	2'-1 7/16"	1'-11 27/64"	1/8"	---	---	---
GP 160	2'-1 53/64"	---	1/8"	---	---	---
GP 167	2'-1 25/64"	1'-11 35/64"	5/64"	---	---	---
GP 168	2'-1 39/64"	---	5/64"	---	---	---
GP 203	2'-1 19/64"	1'-11 19/64"	3/64"	---	---	---
GP 104	---	---	---	2'-1 11/32"	1'-11 11/32"	0"
GP 107	---	---	---	2'-1 15/16"	1'-11 13/16"	13/64"
GP 108	---	---	---	2'-2 9/16"	---	13/64"
GP 117	---	---	---	2'-2 3/8"	---	5/32"
GP 119	---	---	---	2'-1 1/2"	1'-11 1/2"	3/64"
GP 120	---	---	---	2'-1 11/16"	---	3/64"
GP 131	---	---	---	2'-1 7/8"	1'-11 13/16"	5/32"
GP 137	---	---	---	2'-1 27/32"	1'-11 25/32"	7/64"
GP 138	---	---	---	2'-2 5/32"	---	7/64"
GP 145	---	---	---	2'-1 9/16"	1'-11 9/16"	3/64"
GP 146	---	---	---	2'-1 23/32"	---	3/64"
GP 149	---	---	---	2'-1 15/32"	1'-11 3/8"	7/64"
GP 150	---	---	---	2'-1 25/32"	---	7/64"
GP 161	---	---	---	2'-1 7/16"	1'-11 13/32"	1/8"
GP 162	---	---	---	2'-1 53/64"	---	1/8"
GP 165	---	---	---	2'-1 25/64"	1'-11 35/64"	5/64"
GP 166	---	---	---	2'-1 39/64"	---	5/64"
GP 202	---	---	---	2'-1 19/64"	1'-11 19/64"	3/64"



TYPICAL PLATE FOR RIGHT HAND TURNOUT

METRIC CONVERSION: 1 inch=25.4mm, 1 foot=304.8mm

1	18/07/27	ADDED IMPERIAL TO METRIC CONVERSION NOTE	
No.	Date	Revision	By Approved

Standard/ **INSULATED GAUGE PLATES (HALVES) FOR RIGHT HAND TURNOUTS 132&136 LB. R.E. RAILS**

Drawn MG Checked GGS Approved *VP Engineering & Asset Management*



Date SEPT 15/2017 Plan Number GTS-0525 Rev 1