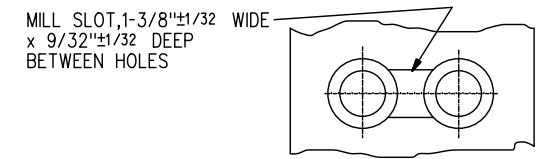
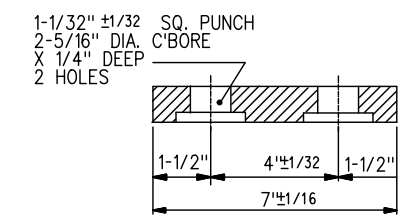


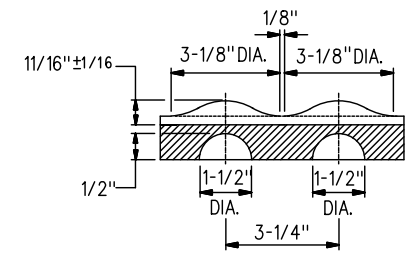
TYPICAL PLATE FOR LEFT HAND TURNOUT-MACHINE MOUNTING



SECTION A-A



SECTION C-C



SECTION B-B
FORMED BRACE STOPS

NOTES

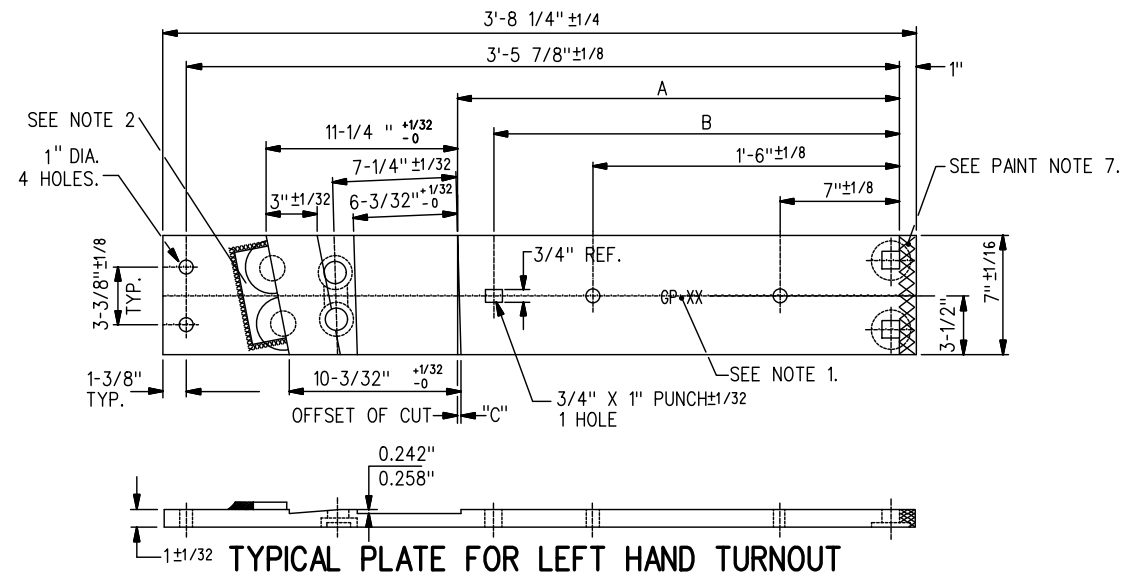
- IDENTIFICATION CHARACTERS (3/4" MINIMUM HEIGHT) TO BE STAMPED ON EACH PLATE AS SHOWN.
- 1/4" x 2" x 5 1/2" SPECIAL PAD TO BE WELDED 3 SIDES - 1/4" FILLET OR TWO 3 1/8" DIA. BOSSES 1/2" DEEP AND SPREAD 3 1/4" APART SYMMETRICAL ABOUT SECTION B-B.
- INSULATION BOLT HOLES MUST HAVE BURRS REMOVED.
- ALL HOLES TO BE PUNCHED OR DRILLED. THE USE OF ACETYLENE TORCH OR OTHER BURNING METHOD FOR THE MAKING OF HOLES OR CUTTING IN THE MANUFACTURE OF GAUGE PLATES IS ABSOLUTELY PROHIBITED.
- WHEN REFERRING TO GAUGE PLATE (HALVES), PLAN AND PLATE NUMBER MUST BE STATED TO INDICATE SPECIFIC PLATE REQUIRED.
- 60R ASSEMBLY OF GAUGE PLATES, SEE PLANS GTS-0522, GTS-0523.
- THE ADJOINING ENDS OF ALL GAUGE PLATE HALVES TO BE PAINTED WITH GLYPTAL G-1201 RED SEMI-GLOSS FINE INSULATING PAINT AS SHOWN.

MATERIAL

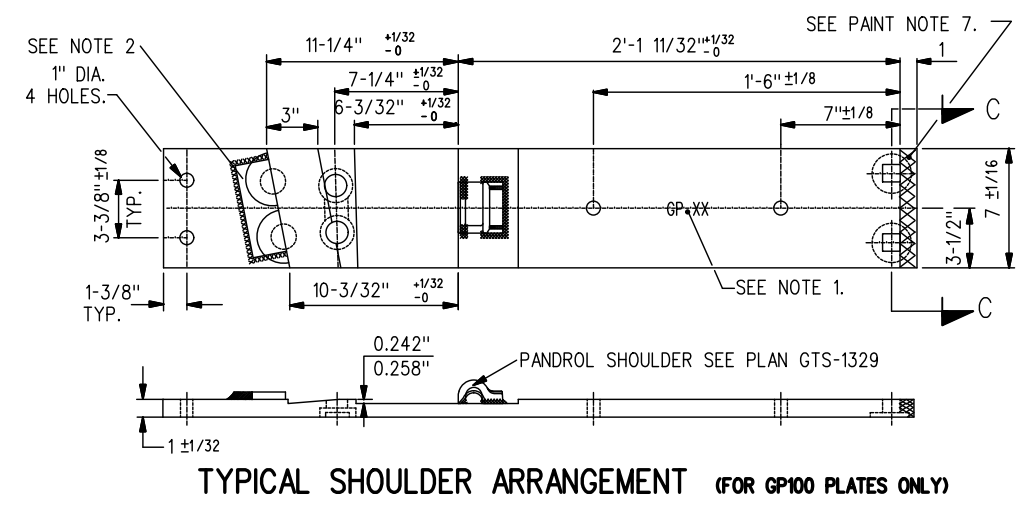
PLATES TO CONFORM TO THE LATEST REVISION OF A.S.T.M. SPECIFICATION A-36 FOR COMMERCIAL QUALITY HOT ROLLED BAR STEEL CHEMICAL REQUIREMENT.

	MINIMUM	MAXIMUM
CARBON	0.25 %	0.29 %
MANGANESE	0.60 %	1.20 %
PHOSPHORUS		0.04 %
SULPHUR		0.05 %
SILICON		0.40 %

DIMENSIONS						
GAUGE PLATES	A +1/32 -0	B ±1/16	C ±1/64	D +1/32 -0	E ±1/16	F ±1/64
GP 100						
GP 101	2'-1 11/32"	1'-11 11/32"	0"			
GP 102	2'-1 15/16"	1'-11 13/16"	13/64"			
GP 103	2'-2 9/16"		13/64"			
GP 111	2'-3 5/32"		13/64"			
GP 113	2'-2 3/8"		5/32"			
GP 114	2'-2 13/16"		5/32"			
GP 123	2'-1 1/2"	1'-11 1/2"	3/64"			
GP 124	2'-1 11/16"		3/64"			
GP 127	2'-2 17/32"		13/64"			
GP 129	2'-1 7/8"	1'-11 13/16"	5/32"			
GP 133	2'-1 27/32"	1'-11 3/4"	7/64"			
GP 134	2'-2 5/32"		7/64"			
GP 147	2'-1 9/16"	1'-11 9/16"	3/64"			
GP 148	2'-1 23/32"		3/64"			
GP 153	2'-1 15/32"	1'-11 3/8"	7/64"			
GP 154	2'-1 25/32"		7/64"			
GP 157	2'-1 7/16"	1'-11 27/64"	1/8"			
GP 158	2'-1 53/64"		1/8"			
GP 169	2'-1 25/64"	1'-11 35/64"	5/64"			
GP 170	2'-1 39/64"		5/64"			
GP 204	2'-1 19/64"	1'-11 19/64"	3/64"			
GP 104				2'-1 11/32"	1'-11 11/32"	0"
GP 109				2'-1 15/16"	1'-11 13/16"	13/64"
GP 110				2'-2 9/16"		13/64"
GP 118				2'-2 3/8"		5/32"
GP 125				2'-1 1/2"	1'-11 1/2"	3/64"
GP 126				2'-1 11/16"		3/64"
GP 132				2'-1 7/8"	1'-11 13/16"	5/32"
GP 139				2'-1 27/32"	1'-11 3/4"	7/64"
GP 140				2'-2 5/32"		7/64"
GP 143				2'-1 9/16"	1'-11 9/16"	3/64"
GP 144				2'-1 23/32"		3/64"
GP 155				2'-1 15/32"	1'-11 3/8"	7/64"
GP 156				2'-1 25/32"		7/64"
GP 163				2'-1 7/16"	1'-11 13/32"	1/8"
GP 164				2'-1 53/64"		1/8"
GP 171				2'-1 25/64"	1'-11 35/64"	5/64"
GP 172				2'-1 39/64"		5/64"
GP 205				2'-1 19/64"	1'-11 19/64"	3/64"



TYPICAL PLATE FOR LEFT HAND TURNOUT



TYPICAL SHOULDER ARRANGEMENT (FOR GP100 PLATES ONLY)

METRIC CONVERSION: 1 inch=25.4mm, 1 foot=304.8mm

No.	Date	Revision	By Approved
1	18/07/27	ADDED IMPERIAL TO METRIC CONVERSION NOTE	

Standard /

INSULATED GAUGE PLATES (HALVES) FOR LEFT HAND TURNOUTS 132&136 LB. R.E. RAILS

Drawn MG Checked GGS Approved *VP Engineering & Asset Management*



Date SEPT 15/2017 Plan Number GTS-0525 Rev 1