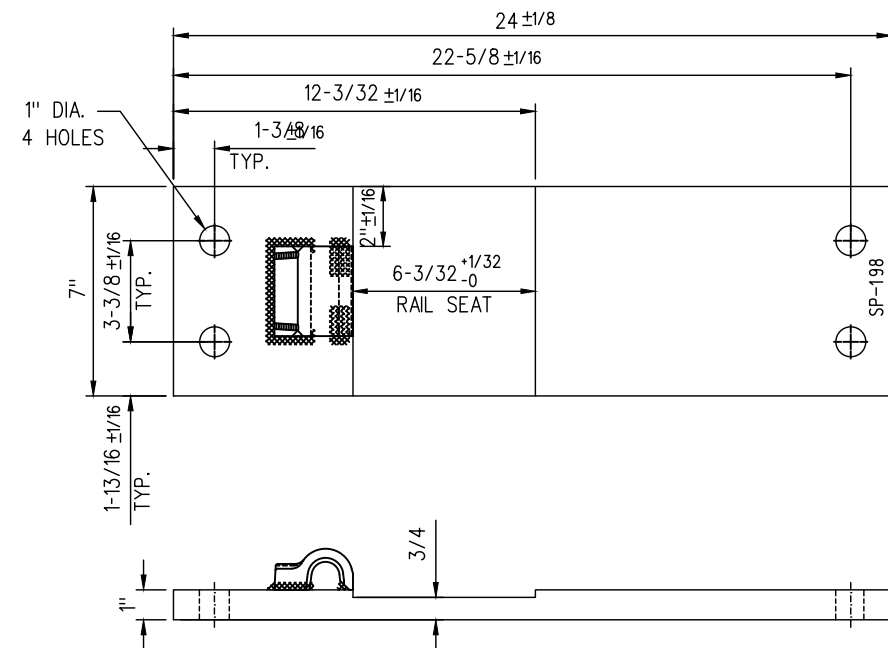


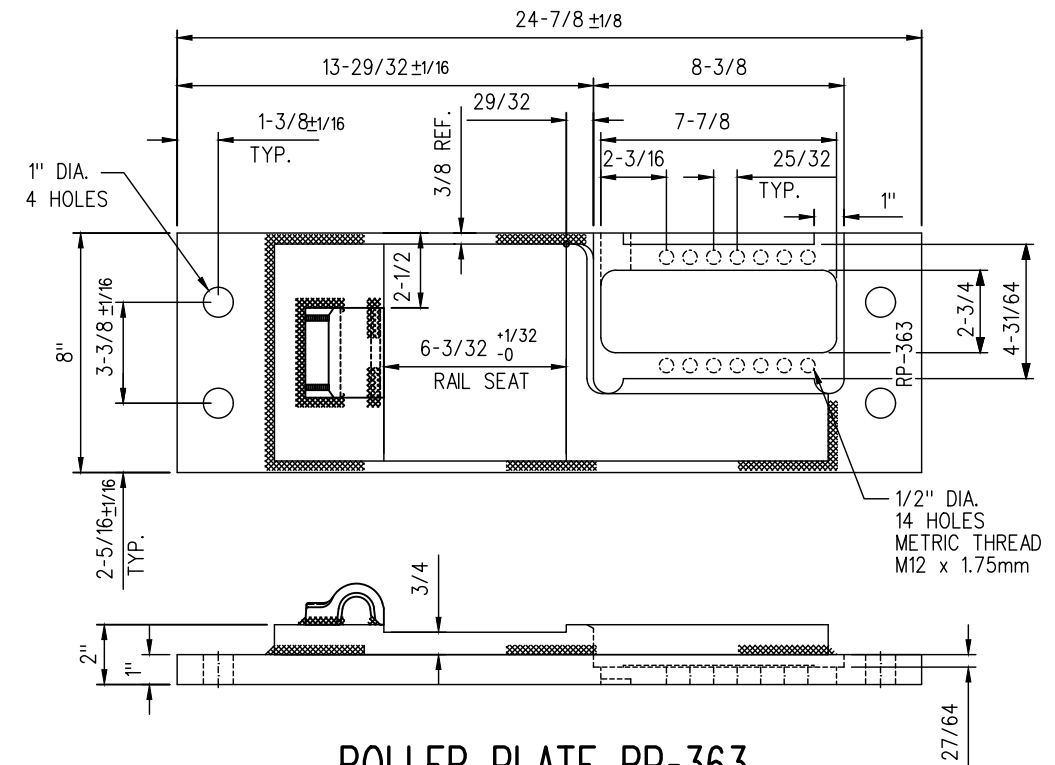
SWITCH PLATE SP-363

WEIGHT 41LBS.



SWITCH PLATE SP-198

WEIGHT 45LBS.



ROLLER PLATE RP-363

WEIGHT 73LBS.

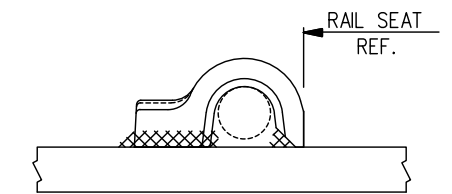
NOTES

1. WHEN REFERRING TO SWITCH PLATES, PLAN AND PLATE NUMBERS MUST BE STATED TO INDICATE SPECIFIC PLATE REQUIRED.
2. IDENTIFICATION CHARACTERS (1/2" MINIMUM HEIGHT) TO BE STAMPED ON EACH PLATE AS SHOWN.
3. ALL DIMENSIONS ARE IN INCHES.
4. UNLESS OTHERWISE SPECIFIED ALL TOLERANCES TO BE $\pm 1/32$.
5. TOLERANCES ARE NOT TO EXCEED THOSE INDICATED IN THE GO TOLERANCE DRAWINGS.
6. ALL HOLES TO BE PUNCHED ; THE USE OF ACETYLENE TORCH OR OTHER BURNING METHOD FOR THE MAKING OF HOLES OR CUTTING IN THE MANUFACTURE OF SWITCH PLATES IS ABSOLUTELY PROHIBITED.

MATERIAL

PLATES TO CONFORM TO THE LATEST REVISION OF A.S.T.M. SPECIFICATION A-36 FOR COMMERCIAL QUALITY HOT ROLLED BAR STEEL CHEMICAL REQUIREMENT.

	MINIMUM	MAXIMUM
CARBON	0.25 %	0.29 %
MANGANESE	0.60 %	1.20 %
PHOSPHORUS		0.04 %
SULPHUR		0.05 %
SILICON		0.40 %



PANDROL SHOULDER DETAIL

METRIC CONVERSION: 1 inch=25.4mm, 1 foot=304.8mm

No.	Date	Revision	By	Approved
1	18/07/27	ADDED IMPERIAL TO METRIC CONVERSION NOTE		
Standard / SWITCH PLATES				
Drawn	RFP	Checked	GGS	Approved <i>[Signature]</i> VP Engineering & Asset Management
Date	SEPT 15/2017	Plan Number	GTS-0530	Rev 1
REFERENCE: TS-0530_R6			Sheet 1 OF 1	



METROLINX