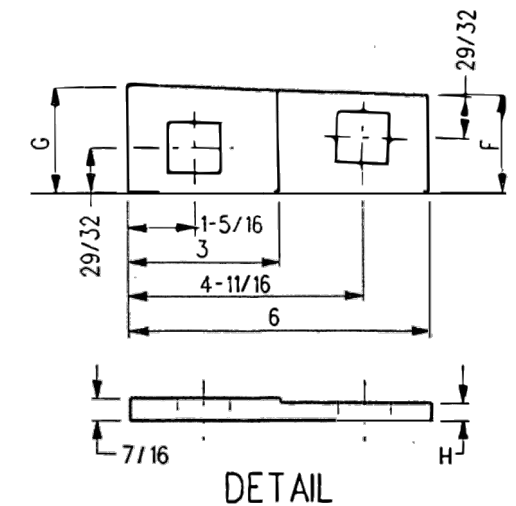


TYPICAL PANDROL SHOULDER INSTALLATION



DETAIL

**NOTES**

1. WHEN REFERRING TO SWITCH PLATES, PLAN AND PLATE NUMBERS MUST BE STATED TO INDICATE SPECIFIC PLATE REQUIRED.
2. IDENTIFICATION CHARACTERS (1/2" MINIMUM HEIGHT) TO BE STAMPED ON EACH PLATE AS SHOWN.
3. ALL DIMENSIONS ARE IN INCHES.
4. UNLESS OTHERWISE SPECIFIED ALL TOLERANCES TO BE ±1/32.

**MATERIAL**

PLATES TO CONFORM TO THE LATEST REVISION OF GO TRANSIT TRACK STANDARDS OR IN GENERAL WITH LATEST REVISION OF A.S.T.M. SPECIFICATION FOR COMMERCIAL QUALITY HOT ROLLED BAR STEEL A-675 CHEMICAL REQUIREMENT.

	MINIMUM	MAXIMUM
CARBON	0.15 %	0.25 %
MANGANESE	0.30 %	0.60 %
PHOSPHORUS		0.04 %
SULPHUR		0.05 %

PLATES	A	B	C	D	E	F	G	H	WEIGHT (LBS)	STOCK NUMBERS	
	±1/8	±1/16								NEW	PART WORN
SP-485R	27-1/4	25-7/8	21-1/16	2°	13/16	1-31/32	2-3/16	3/8	52.94		
SP-488R	27-1/2	26-1/8	21-7/16	2°	13/16	2-11/32	2-9/16	3/8	53.64		
SP-491R	26-3/4	25-3/8	20-1/2	1°	29/32	1-15/32	1-9/16	9/32	53.74		
SP-492R	27	25-5/8	20-29/32	1°	7/8	1-29/32	2	5/16	53.72		
SP-493R	27-1/2	26-1/8	21-11/32	1°	27/32	2-5/16	2-13/32	11/32	54.30		
SP-494R	28	26-5/8	21-3/4	1°	13/16	2-23/32	2-13/16	3/8	54.71		
SP-495R	28-1/2	27-1/8	22-7/32	1°	25/32	3-3/16	3-9/32	13/32	55.14		
SP-522R	27-1/4	25-7/8	21-5/32	2°	29/32	2-3/32	2-9/32	9/32	55.12		
SP-523R	28	26-5/8	21-25/32	2°	7/8	2-23/32	2-29/32	5/16	56.13		
SP-524R	28-1/2	27-1/8	22-7/16	2°	27/32	3-3/8	3-9/16	11/32	56.77		
SP-525R	29-1/4	27-7/8	23-3/32	2°	13/16	4-1/32	4-7/32	3/8	57.73		
SP-526R	30	28-5/8	23-25/32	2°	25/32	4-23/32	4-29/32	13/32	58.67		
SP-638R	28	26-5/8	21-45/64	2°	13/16	2-21/32	2-27/32	3/8			
SP-721R	28-1/2	27-1/8	22	3°	7/8	2-13/16	3-3/16	5/16			
SP-723R	29-1/2	28-1/8	23-3/16	3°	13/16	4-3/64	4-13/32	3/8			
SP-733R	28	26-5/8	21-13/16	3°	7/8	2-11/16	3-1/32	5/16			
SP-735R	28-3/4	27-3/8	23	3°	13/16	3-13/16	4-3/16	3/8			

**METRIC CONVERSION: 1 inch=25.4mm, 1 foot=304.8mm**

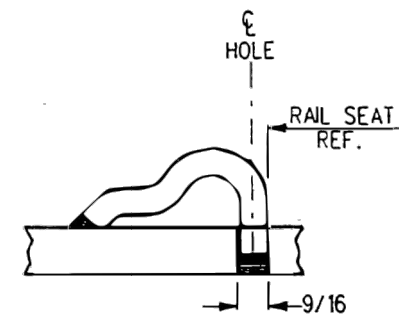
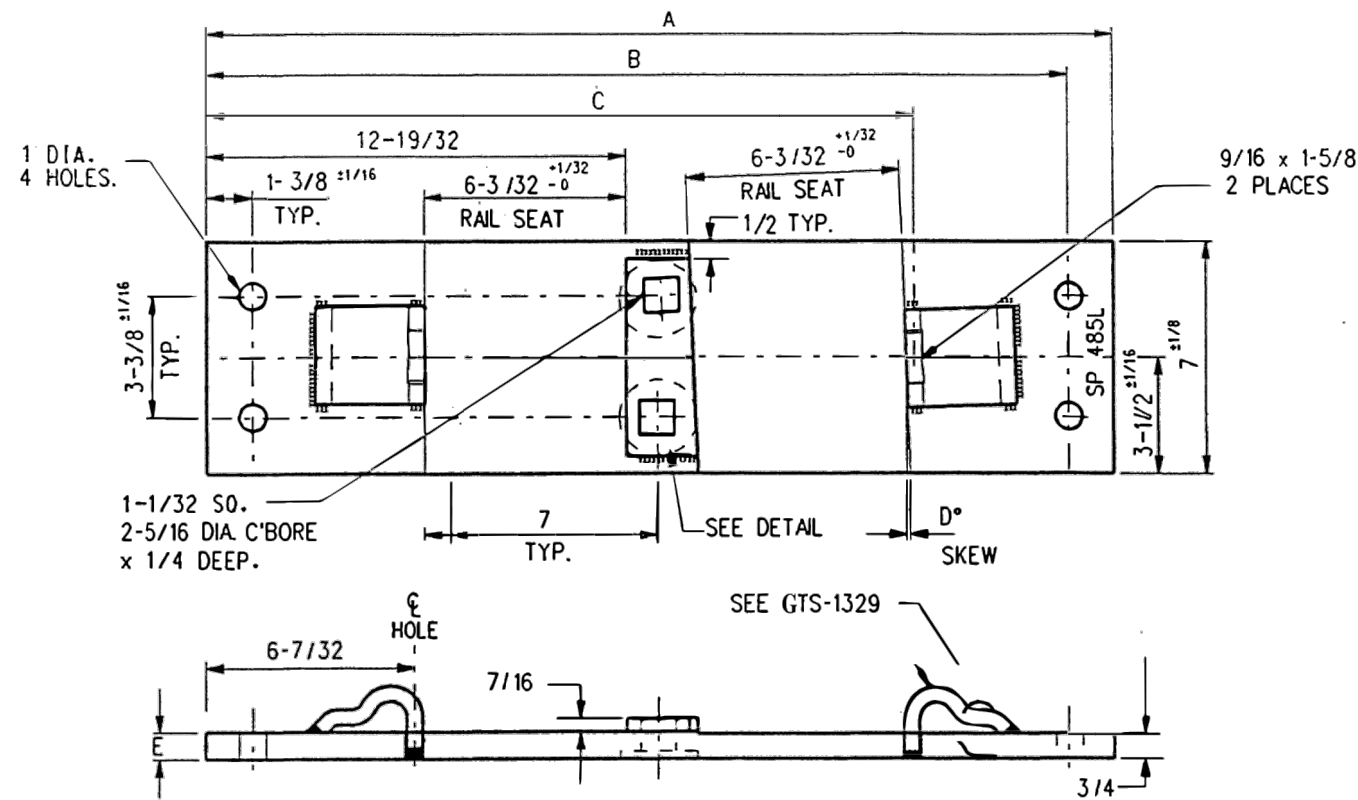
1	18/07/27	ADDED IMPERIAL TO METRIC CONVERSION NOTE	
No.	Date	Revision	By Approved

Standard / **SWITCH PLATE RIGHT HAND**

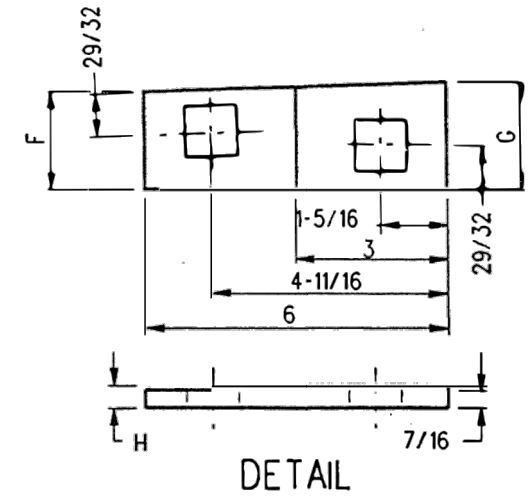
Drawn MG Checked GGS Approved *[Signature]*  
VP Engineering & Asset Management



Date DEC 15, 2017 Plan Number GTS-0542 Rev 1



TYPICAL PANDROL SHOULDER INSTALLATION



DETAIL

NOTES

1. WHEN REFERRING TO SWITCH PLATES, PLAN AND PLATE NUMBERS MUST BE STATED TO INDICATE SPECIFIC PLATE REQUIRED.
2. IDENTIFICATION CHARACTERS (1/2" MINIMUM HEIGHT) TO BE STAMPED ON EACH PLATE AS SHOWN.
3. ALL DIMENSIONS ARE IN INCHES.
4. UNLESS OTHERWISE SPECIFIED ALL TOLERANCES TO BE ± 1/32.

MATERIAL

PLATES TO CONFORM TO THE LATEST REVISION OF GO TRANSIT TRACK STANDARDS OR IN GENERAL WITH LATEST REVISION OF A.S.T.M. SPECIFICATION FOR COMMERCIAL QUALITY HOT ROLLED BAR STEEL A-675 CHEMICAL REQUIREMENT.

	MINIMUM	MAXIMUM
CARBON	0.15 %	0.25 %
MANGANESE	0.30 %	0.60 %
PHOSPHORUS		0.04 %
SULPHUR		0.05 %

PLATES	A	B	C	D	E	F	G	H	WEIGHT (LBS)	STOCK NUMBERS	
	± 1/8	± 1/16								NEW	PART WORN
SP-485L	27-1/4	25-7/8	21-1/16	2°	13/16	1-31/32	2-3/16	3/8	52.94		
SP-488L	27-1/2	26-1/8	21-7/16	2°	13/16	2-11/32	2-9/16	3/8	53.64		
SP-491L	26-3/4	25-3/8	20-1/2	1°	29/32	1-15/32	1-9/16	9/32	53.74		
SP-492L	27	25-5/8	20-29/32	1°	7/8	1-29/32	2	5/16	53.72		
SP-493L	27-1/2	26-1/8	21-11/32	1°	27/32	2-5/16	2-13/32	11/32	54.30		
SP-494L	28	26-5/8	21-3/4	1°	13/16	2-23/32	2-13/16	3/8	54.71		
SP-495L	28-1/2	27-1/8	22-7/32	1°	25/32	3-3/16	3-9/32	13/32	55.14		
SP-522L	27-1/4	25-7/8	21-5/32	2°	29/32	2-3/32	2-9/32	9/32	55.12		
SP-523L	28	26-5/8	21-25/32	2°	7/8	2-23/32	2-29/32	5/16	56.13		
SP-524L	28-1/2	27-1/8	22-7/16	2°	27/32	3-3/8	3-9/16	11/32	56.77		
SP-525L	29-1/4	27-7/8	23-3/32	2°	13/16	4-1/32	4-7/32	3/8	57.73		
SP-526L	30	28-5/8	23-25/32	2°	25/32	4-23/32	4-29/32	13/32	58.67		
SP-638L	28	26-5/8	21-45/64	2°	13/16	2-21/32	2-27/32	3/8			
SP-721L	28-1/2	27-1/8	22	3°	7/8	2-13/16	3-3/16	5/16			
SP-723L	29-1/2	28-1/8	23-3/16	3°	13/16	4-3/64	4-13/32	3/8			
SP-733L	28	26-5/8	21-13/16	3°	7/8	2-11/16	3-1/32	5/16			
SP-735L	28-3/4	27-3/8	23	3°	13/16	3-13/16	4-3/16	3/8			

METRIC CONVERSION: 1 inch=25.4mm, 1 foot=304.8mm

1	18/07/27	ADDED IMPERIAL TO METRIC CONVERSION NOTE
No.	Date	Revision
		By Approved

Standard/

**SWITCH PLATE  
RIGHT HAND**

Drawn MG Checked GGS Approved *[Signature]*  
VP Engineering & Asset Management



Date DEC 15, 2017 Plan Number GTS-0542 Rev 1