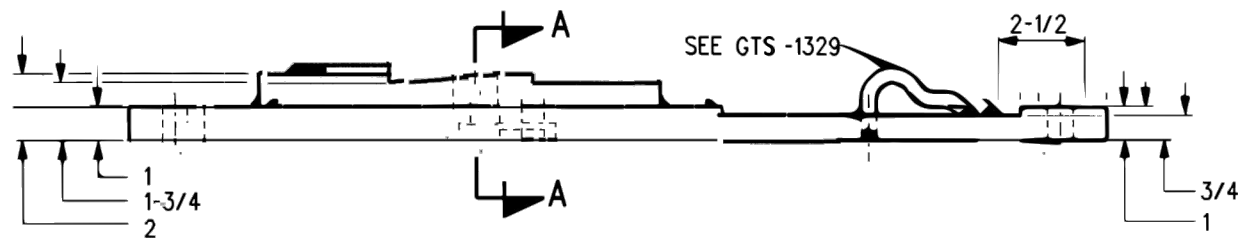
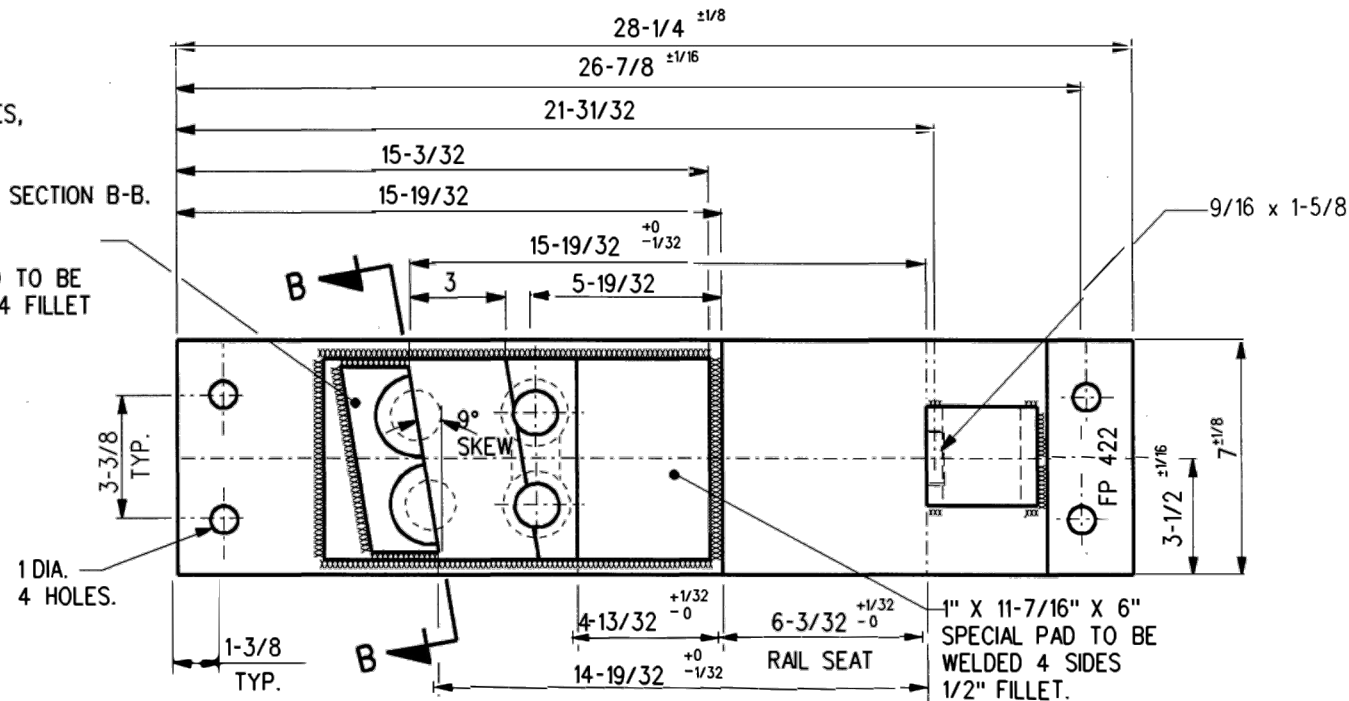


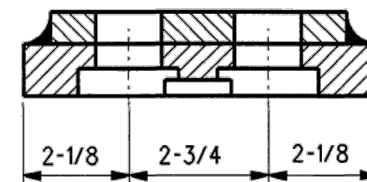
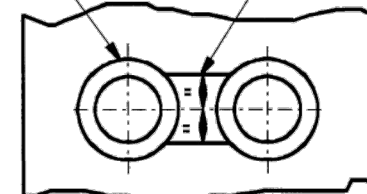
SEE NOTE 5.
TWO 3-1/8 DIA. BOSSES,
EMBOSSSED 1/2 DEEP,
SPREAD 3-1/4 APART,
SYMMETRICAL ABOUT SECTION B-B.
(OR)
1/4 X 2 X 5-1/2 PAD TO BE
WELDED 3 SIDES - 1/4 FILLET



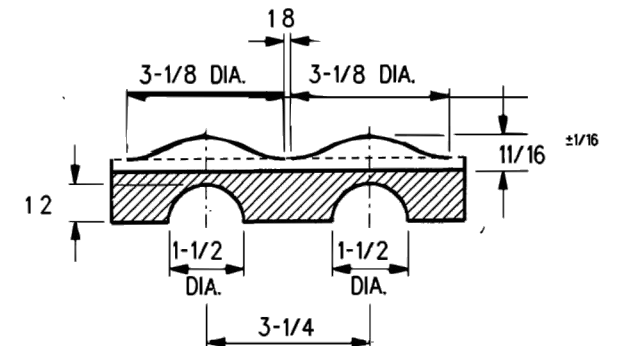
FROG PLATE
FP 422

1-5/16
2 C'BORE X 15/32 ^{+1/32}₋₀ DEEP

MILL SLOT 1-3/8 WIDE X
9/32 DEEP, BETWEEN HOLES



SECTION A-A



SECTION B-B
FORMED BRACE STOPS

NOTES

1. WHEN REFERRING TO FROG PLATE, PLAN AND PLATE NUMBER MUST BE STATED TO INDICATE SPECIFIC PLATE REQUIRED.
2. IDENTIFICATION CHARACTERS (1/2" MINIMUM HEIGHT) TO BE STAMPED ON PLATE AS SHOWN.
3. ALL DIMENSIONS ARE IN INCHES.
4. UNLESS OTHERWISE SPECIFIED ALL TOLERANCES TO BE $\pm 1/32$.
5. BRACE STOPS MAY BE FORMED (SECTION B-B) OR WELDED PADS.
6. ALL HOLES TO BE PUNCHED ; THE USE OF ACETYLENE TORCH OR OTHER BURNING METHOD FOR THE MAKING OF HOLES OR CUTTING IN THE MANUFACTURE OF FROG PLATES IS ABSOLUTELY PROHIBITED.

MATERIAL

PLATES TO CONFORM TO THE LATEST REVISION OF GO TRANSIT TRACK STANDARDS OR IN GENERAL WITH LATEST REVISION OF A.S.T.M. SPECIFICATION FOR COMMERCIAL QUALITY HOT ROLLED BAR STEEL A-675 CHEMICAL REQUIREMENT.

| | MINIMUM | MAXIMUM |
|------------|---------|---------|
| CARBON | 0.15 % | 0.25 % |
| MANGANESE | 0.30 % | 0.60 % |
| PHOSPHORUS | | 0.04 % |
| SULPHUR | | 0.05 % |

METRIC CONVERSION: 1 inch=25.4mm, 1 foot=304.8mm

| | | |
|-----|----------|--|
| 1 | 18/07/27 | ADDED IMPERIAL TO METRIC CONVERSION NOTE |
| No. | Date | Revision |
| | | By Approved |

Standard / **FROG PLATE**

Drawn RFP Checked GGS Approved *[Signature]*
VP Engineering & Asset Management



Date DEC 15, 2017 Plan Number GTS-0549 Rev 1

REFERENCE: TS-549 Sheet 1 OF 1