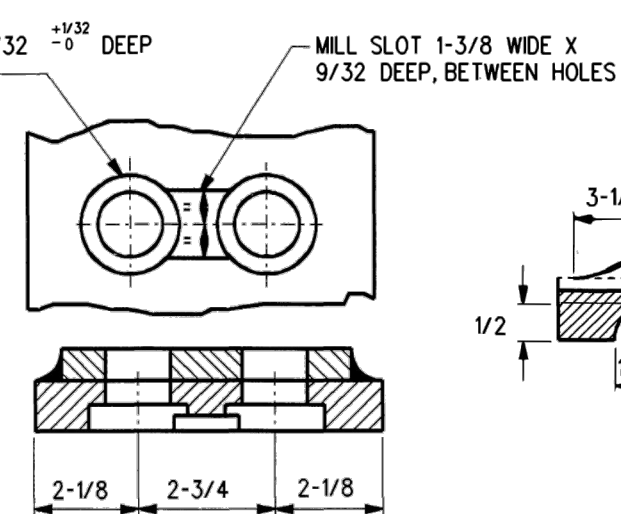
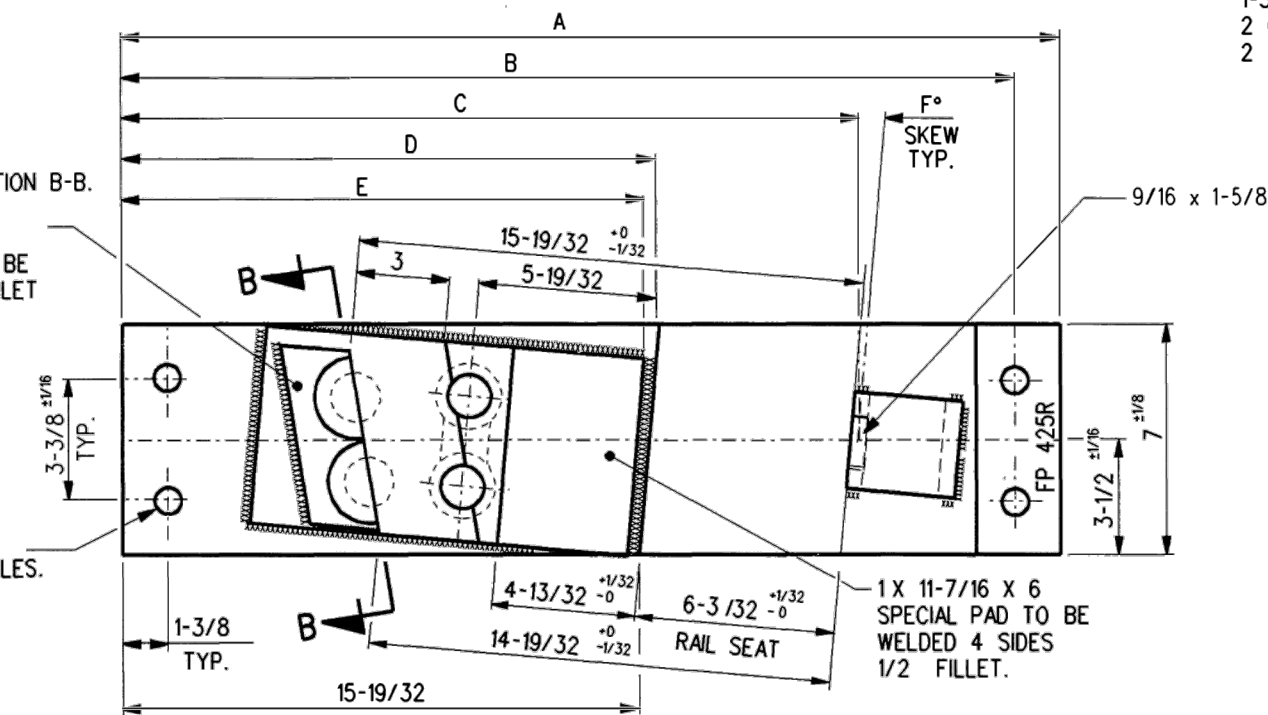


SEE NOTE 5.
TWO 3-1/8 DIA. BOSSES,
EMBOSSSED 1/2 DEEP,
SPREAD 3-1/4 APART,
SYMMETRICAL ABOUT SECTION B-B.

(OR)

1/4 X 2 X 5-1/2 PAD TO BE
WELDED 3 SIDES - 1/4 FILLET

1 DIA.
4 HOLES.



SECTION A-A

SECTION B-B
FORMED BRACE STOPS

NOTES

1. WHEN REFERRING TO FROG PLATES, PLAN AND PLATE NUMBERS MUST BE STATED TO INDICATE SPECIFIC PLATE REQUIRED.
2. IDENTIFICATION CHARACTERS (1/2" MINIMUM HEIGHT) TO BE STAMPED ON EACH PLATE AS SHOWN.
3. ALL DIMENSIONS ARE IN INCHES.
4. UNLESS OTHERWISE SPECIFIED ALL TOLERANCES TO BE ±1/32.
5. BRACE STOPS MAY BE FORMED (SECTION B-B) OR WELDED PADS.
6. ALL HOLES TO BE PUNCHED; THE USE OF ACETYLENE TORCH OR OTHER BURNING METHOD FOR THE MAKING OF HOLES OR CUTTING IN THE MANUFACTURE OF FROG PLATES IS ABSOLUTELY PROHIBITED.

MATERIAL

PLATES TO CONFORM TO THE LATEST REVISION OF GO TRANSIT TRACK STANDARDS OR IN GENERAL WITH LATEST REVISION OF A.S.T.M. SPECIFICATION FOR COMMERCIAL QUALITY HOT ROLLED BAR STEEL A-675 CHEMICAL REQUIREMENT.

	MINIMUM	MAXIMUM
CARBON	0.15 %	0.25 %
MANGANESE	0.30 %	0.60 %
PHOSPHORUS		0.04 %
SULPHUR		0.05 %

PLATES	A	B	C	D	E	F	WEIGHT (LBS.)	STOCK NUMBERS	
	±1/8	±1/16						NEW	PART WORN
FP-425R	28-3/8	27	22-5/16	16-7/32	15-5/8	5°			
FP-457R	28-1/2	27-1/8	22-3/8	16-5/16	15-23/32	6°			
FP-486R	28	26-5/8	22-5/32	15-15/16	15-7/16	3°			
FP-538R	28-3/8	27	22-3/16	16-1/16	15-1/2	4°			

METRIC CONVERSION: 1 inch=25.4mm, 1 foot=304.8mm

1	18/07/27	ADDED IMPERIAL TO METRIC CONVERSION NOTE
No.	Date	Revision
		By Approved

Standard/

FROG PLATES
RIGHT HAND

Drawn RFP Checked GGS Approved VP Engineering & Asset Management



METROLINX

Date DEC 15, 2017 Plan Number GTS-0552 Rev 1

REFERENCE: TS-552

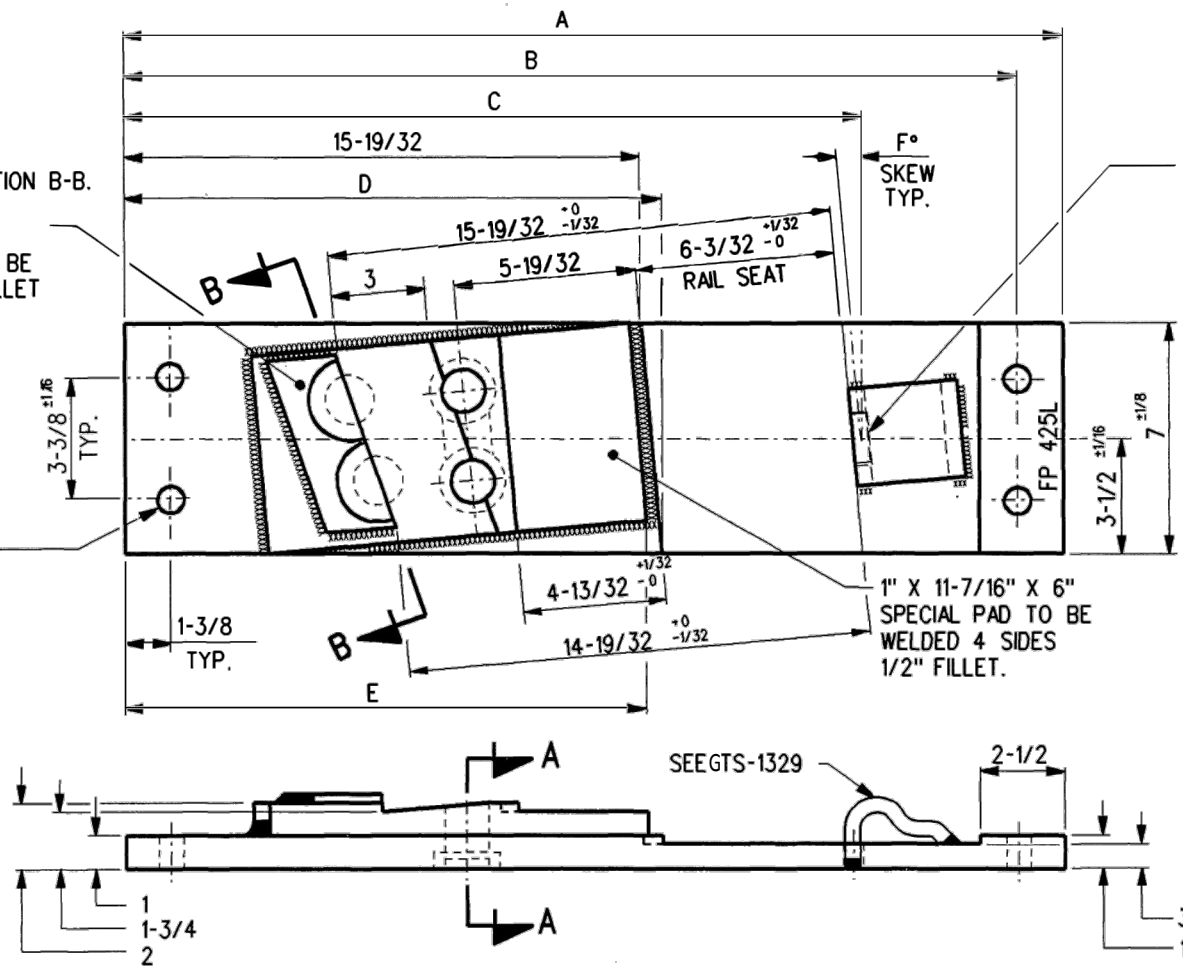
Sheet 1 OF 2

SEE NOTE 5.
TWO 3-1/8 DIA. BOSSES,
EMBOSSED 1/2 DEEP,
SPREAD 3-1/4 APART,
SYMMETRICAL ABOUT SECTION B-B.

(OR)

1/4 X 2 X 5-1/2 PAD TO BE
WELDED 3 SIDES - 1/4 FILLET

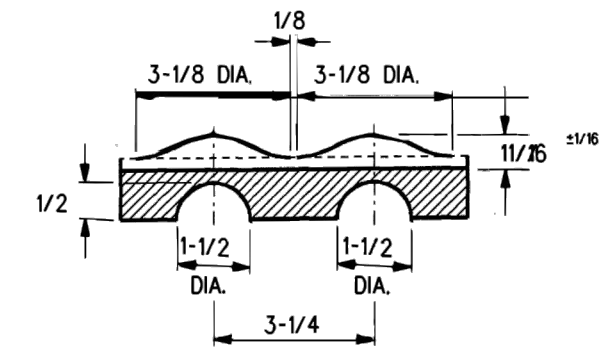
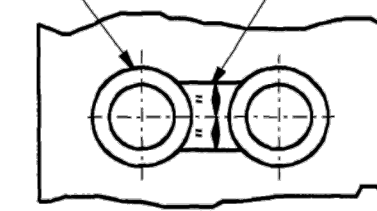
1 DIA.
4 HOLES



1-5/16
2 C'BORE X 15/32 $\pm 1/32$ DEEP

MILL SLOT 1-3/8 WIDE X
9/32 DEEP, BETWEEN HOLES

9/16 X 1-5/8



SECTION A-A

SECTION B-B
FORMED BRACE STOPS

NOTES

1. WHEN REFERRING TO FROG PLATES, PLAN AND PLATE NUMBERS MUST BE STATED TO INDICATE SPECIFIC PLATE REQUIRED.
2. IDENTIFICATION CHARACTERS (1/2" MINIMUM HEIGHT) TO BE STAMPED ON EACH PLATE AS SHOWN.
3. ALL DIMENSIONS ARE IN INCHES.
4. UNLESS OTHERWISE SPECIFIED ALL TOLERANCES TO BE $\pm 1/32$.
5. BRACE STOPS MAY BE FORMED (SECTION B-B) OR WELDED PADS.
6. ALL HOLES TO BE PUNCHED; THE USE OF ACETYLENE TORCH OR OTHER BURNING METHOD FOR THE MAKING OF HOLES OR CUTTING IN THE MANUFACTURE OF FROG PLATES IS ABSOLUTELY PROHIBITED.

MATERIAL

PLATES TO CONFORM TO THE LATEST REVISION OF GO TRANSIT TRACK STANDARDS OR IN GENERAL WITH LATEST REVISION OF A.S.T.M. SPECIFICATION FOR COMMERCIAL QUALITY HOT ROLLED BAR STEEL A-675 CHEMICAL REQUIREMENT.

	MINIMUM	MAXIMUM
CARBON	0.15 %	0.25 %
MANGANESE	0.30 %	0.60 %
PHOSPHORUS		0.04 %
SULPHUR		0.05 %

PLATES	A	B	C	D	E	F	WEIGHT (LBS.)	STOCK NUMBERS	
	$\pm 1/8$	$\pm 1/16$						NEW	PART WORN
FP-425L	28-3/8	27	22-5/16	16-7/32	15-5/8	5°			
FP-457L	28-1/2	27-1/8	22-3/8	16-5/16	15-23/32	6°			
FP-486L	28	26-5/8	22-5/32	15-15/16	15-7/16	3°			
FP-538L	28-3/8	27	22-3/16	16-1/16	15-1/2	4°			

METRIC CONVERSION: 1 inch=25.4mm, 1 foot=304.8mm

1	18/07/27	ADDED IMPERIAL TO METRIC CONVERSION NOTE
No.	Date	Revision
		By Approved

Standard/ **FROG PLATES LEFT HAND**

Drawn RFP Checked GGS Approved *[Signature]*
VP Engineering & Asset Management



Date DEC 15, 2017 Plan Number GTS-0552 Rev 1