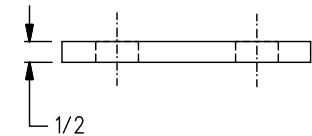
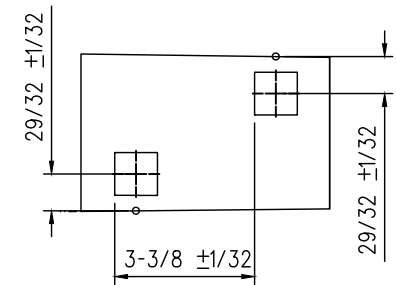


PANDROL SHOULDER DETAIL



DETAIL

NOTES

1. WHEN REFERRING TO SWITCH PLATES, PLAN AND PLATE NUMBERS MUST BE STATED TO INDICATE SPECIFIC PLATE REQUIRED.
2. IDENTIFICATION CHARACTERS ( 1/2" MINIMUM HEIGHT) TO BE STAMPED ON EACH PLATE AS SHOWN.
3. ALL DIMENSIONS ARE IN INCHES.
4. UNLESS OTHERWISE SPECIFIED ALL TOLERANCES TO BE ±1/32
5. TOLERANCES ARE NOT TO EXCEED THOSE INDICATED IN THE GO TOLERANCE DRAWINGS.

MATERIAL

PLATES TO CONFORM TO THE LATEST REVISION OF A.S.T.M. SPECIFICATION A-36 FOR COMMERCIAL QUALITY HOT ROLLED BAR STEEL CHEMICAL REQUIREMENT.

|            | MINIMUM | MAXIMUM |
|------------|---------|---------|
| CARBON     | 0.25 %  | 0.29 %  |
| MANGANESE  | 0.60 %  | 1.20 %  |
| PHOSPHORUS |         | 0.04 %  |
| SULPHUR    |         | 0.05 %  |
| SILICON    |         | 0.40 %  |

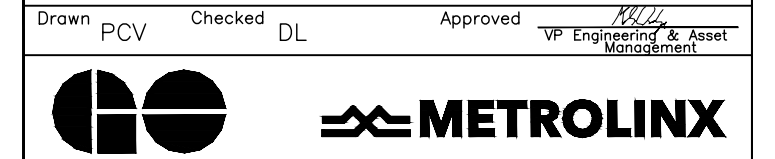
| PLATES | A       | B        | C        | D  | E  | F       | G       | WEIGHT (LBS.) | REPLACED BY |          |
|--------|---------|----------|----------|----|----|---------|---------|---------------|-------------|----------|
|        | ±1/8    | ±1/16    |          |    |    | ±1/32   | ±1/32   |               | MARK No.    | GTS DWG. |
| SP-568 | 27-3/4  | 26-3/8   | 21-7/8   | 1° | 1° | 3-11/16 | 3-7/16  | 47.0          |             |          |
| SP-569 | 28-3/4  | 27-3/8   | 22-23/32 | 1° | 1° | 4-17/32 | 4-9/32  | 49.0          |             |          |
| SP-586 | 28-5/16 | 26-15/16 | 22-1/4   | 1° | 1° | 4-1/16  | 3-3/4   | 46.5          |             |          |
| SP-623 | 28      | 26-5/8   | 22       | 1° | 1° | 3-13/16 | 3-21/32 | 46.3          |             |          |
| SP-624 | 28-1/2  | 27-1/8   | 22-15/32 | 1° | 1° | 4-9/32  | 4-3/32  | 47.4          |             |          |
| SP-625 | 29      | 27-5/8   | 22-15/16 | 1° | 1° | 4-3/4   | 4-9/16  | 48.5          |             |          |
| SP-626 | 29-1/2  | 28-1/8   | 23-7/16  | 1° | 1° | 5-1/4   | 5-1/16  | 49.6          |             |          |

METRIC CONVERSION: 1 inch=25.4mm, 1 foot=304.8mm

|     |          |  |             |
|-----|----------|--|-------------|
| 1   | 18/07/27 | ADDED IMPERIAL TO METRIC CONVERSION NOTE |             |
| No. | Date     | Revision                                 | By Approved |

Standard / SWITCH PLATES

Drawn PCV Checked DL Approved *[Signature]*  
VP Engineering & Asset Management



Date SEPT 15/2017 Plan Number GTS-0560 Rev 1