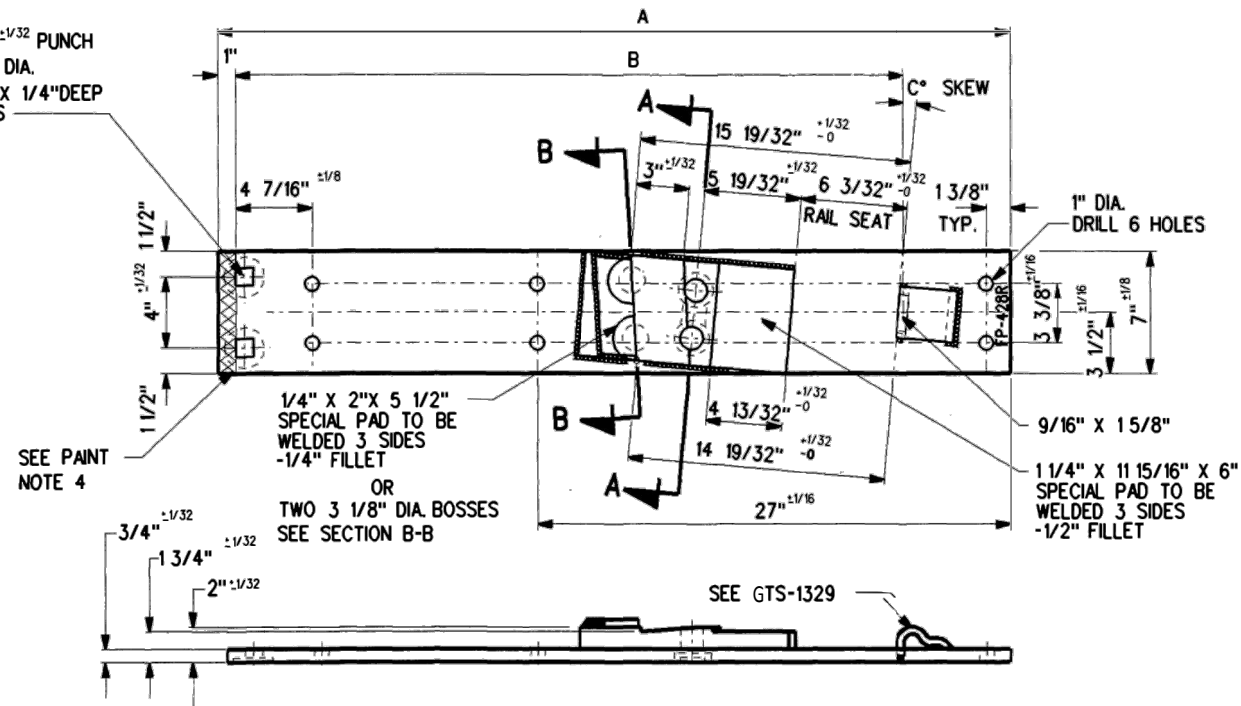
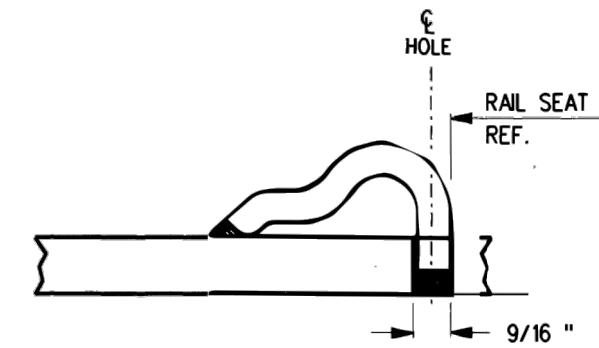
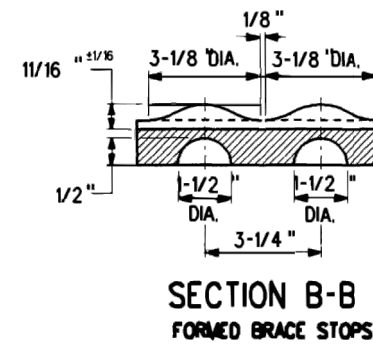
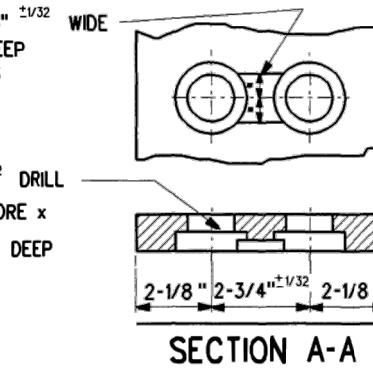


1 1/32" ±1/32 PUNCH
2 5/16" DIA.
C'BORE X 1/4" DEEP
2 HOLES



MILL SLOT 1 3/8" ±1/32 WIDE
X 9/32" ±1/32 DEEP
BETWEEN HOLES

15/16" ±1/32 DRILL
2" ±1/32 C'BORE X
15/32" ±1/32 DEEP
2 HOLES



TYPICAL PANDROL SHOULDER INSTALLATION

NOTES

1. WHEN REFERRING TO FROG PLATES, PLAN AND PLATE NUMBERS MUST BE STATED TO INDICATE SPECIFIC PLATE REQUIRED.
2. IDENTIFICATION CHARACTERS (1/2" MINIMUM HEIGHT) TO BE STAMPED ON EACH PLATE AS SHOWN.
3. ALL DIMENSIONS ARE IN INCHES
4. THE ENDS OF FROG PLATES TO BE PAINTED WITH INSULATING PAINT AS SHOWN.

MATERIAL

PLATES TO CONFORM TO THE LATEST REVISION OF GO TRANSIT TRACK STANDARDS OR IN GENERAL WITH LATEST REVISION OF A.S.T.M. SPECIFICATION FOR COMMERCIAL QUALITY HOT ROLLED BAR STEEL A-675 CHEMICAL REQUIREMENT.

	MINIMUM	MAXIMUM
CARBON	0.15 %	0.25 %
MANGANESE	0.30 %	0.60 %
PHOSPHORUS		0.04 %
SULPHUR		0.05 %

PLATES	A	B	C	WEIGHT (LBS.)	STOCK NUMBERS	
	±1/16	±1/32 -0			NEW	PART WORN
FP-426	44 5/8	37 27/32	0°			
FP-428R	44 7/8	37 25/32	5°			
FP-458R	43 11/16	36 5/8	6°			
FP-460	43 27/64	36 41/64	0°			
FP-494R	45 1/16	38 3/16	3°			
FP-495	45	38 9/32	0°			
FP-506	45	38 7/32	1°			
FP-528R	45 1/16	38 15/64	4°			
FP-600	38-3/4	31-7/8	0°			
FP-602R	38-3/4	31-15/16	7°			

METRIC CONVERSION: 1 inch=25.4mm, 1 foot=304.8mm

1	18/07/27	ADDED IMPERIAL TO METRIC CONVERSION NOTE
No.	Date	Revision
		By Approved

Standard/ **FROG GAUGE PLATES
RIGHT HAND**

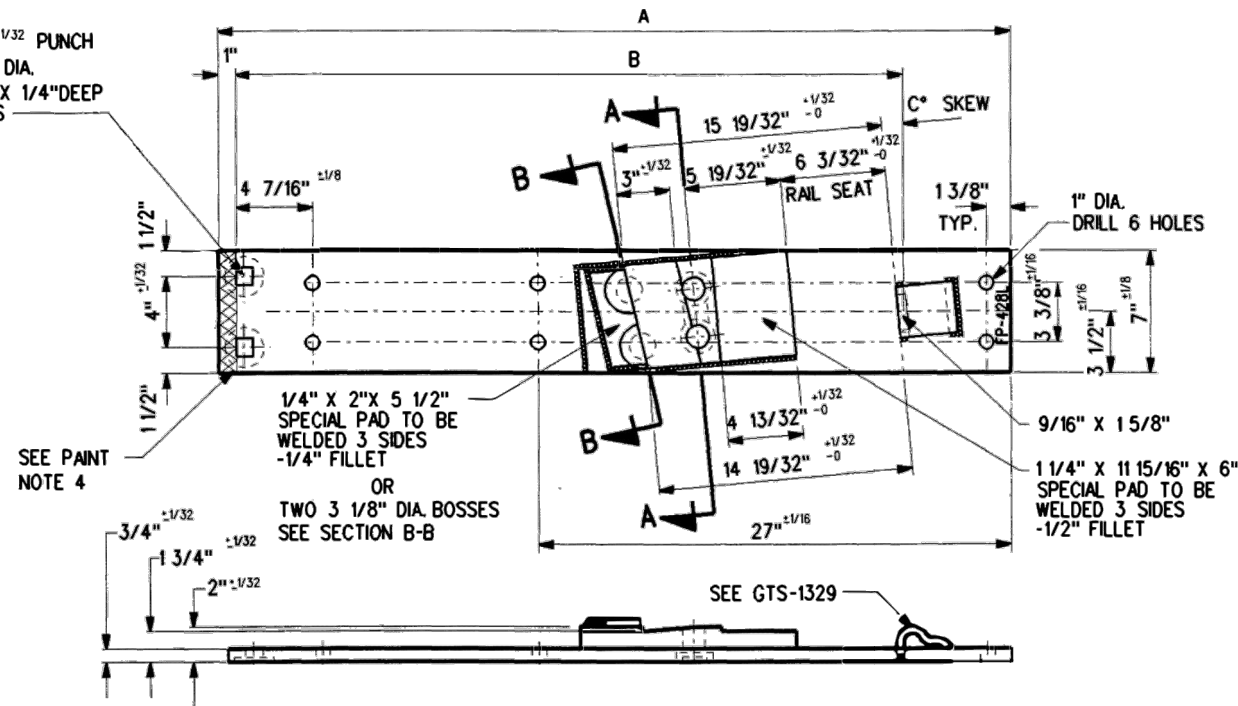
Drawn RFP Checked GGS Approved *[Signature]*
VP Engineering & Asset Management



Date DEC 15, 2017 Plan Number GTS-0602 Rev 1

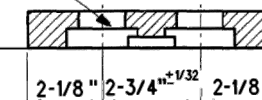
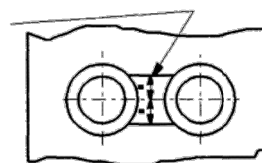
REFERENCE: TS-602 Sheet 1 OF 2

1 1/32" ± 1/32 PUNCH
2 5/16" DIA.
C'BORE X 1/4" DEEP
2 HOLES

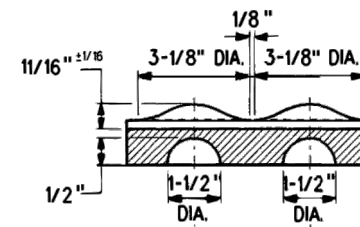


MILL SLOT 1 3/8" ± 1/32 WIDE
X 9/32" ± 1/32 DEEP
BETWEEN HOLES

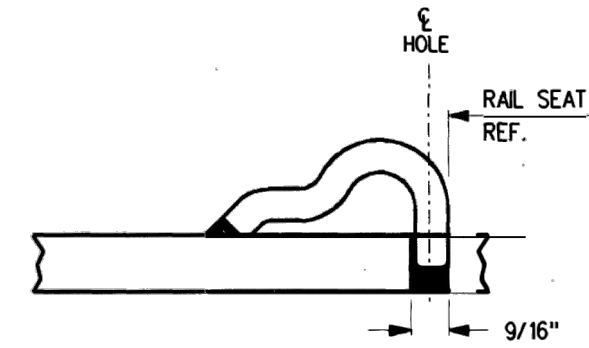
1 5/16" ± 1/32 DRILL
2" ± 1/32 C'BORE X
1 5/32" ± 1/32 DEEP
2 HOLES



SECTION A-A



SECTION B-B
FORMED BRACE STOPS



TYPICAL PANDROL SHOULDER
INSTALLATION

NOTES

1. WHEN REFERRING TO FROG PLATES, PLAN AND PLATE NUMBERS MUST BE STATED TO INDICATE SPECIFIC PLATE REQUIRED.
2. IDENTIFICATION CHARACTERS (1/2" MINIMUM HEIGHT) TO BE STAMPED ON EACH PLATE AS SHOWN.
3. ALL DIMENSIONS ARE IN INCHES
4. THE ENDS OF FROG PLATES TO BE PAINTED WITH INSULATING PAINT AS SHOWN.

MATERIAL

PLATES TO CONFORM TO THE LATEST REVISION OF GO TRANSIT TRACK STANDARDS OR IN GENERAL WITH LATEST REVISION OF A.S.T.M. SPECIFICATION FOR COMMERCIAL QUALITY HOT ROLLED BAR STEEL A-675 CHEMICAL REQUIREMENT.

	MINIMUM	MAXIMUM
CARBON	0.15 %	0.25 %
MANGANESE	0.30 %	0.60 %
PHOSPHORUS		0.04 %
SULPHUR		0.05 %

PLATES	A	B	C	WEIGHT (LBS.)	STOCK NUMBERS	
	± 1/16	± 1/32 -0			NEW	PART WORN
FP-426	44 5/8	37 27/32	0°			
FP-428L	44 7/8	37 25/32	5°			
FP-458L	43 11/16	36 5/8	6°			
FP-460	43 27/64	36 41/64	0°			
FP-494L	45 1/16	38 3/16	3°			
FP-495	45	38 9/32	0°			
FP-505	45	38 7/32	1°			
FP-528L	45 1/16	38 15/64	4°			
FP-600	38-3/4	31-7/8	0°			
FP-602L	38-3/4	31-15/16	7°			

METRIC CONVERSION: 1 inch=25.4mm, 1 foot=304.8mm

1	18/07/27	ADDED IMPERIAL TO METRIC CONVERSION NOTE
No.	Date	Revision
		By Approved

Standard/
**FROG GAUGE PLATES
LEFT HAND**

Drawn RFP Checked GGS Approved *[Signature]*
VP Engineering & Asset Management



Date DEC 15, 2017 Plan Number GTS-0602 Rev 1

REFERENCE: TS-602 Sheet 2 OF 2