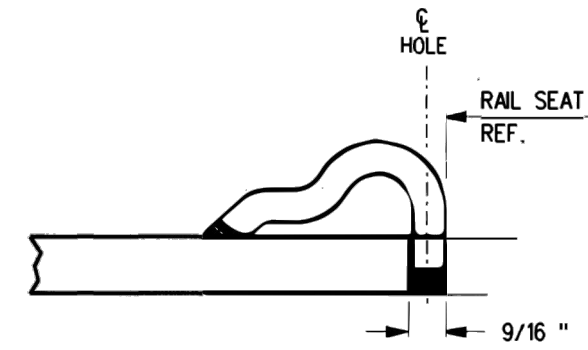


FROG BASE PLATE  
FP-440R

FROG BASE PLATE  
FP-440L



TYPICAL PANDROL SHOULDER  
INSTALLATION

**NOTES**

1. WHEN REFERRING TO FROG BASE PLATES, PLAN AND PLATE NUMBERS MUST BE STATED TO INDICATE SPECIFIC PLATE REQUIRED.
2. IDENTIFICATION CHARACTERS (1/2" MINIMUM HEIGHT) TO BE STAMPED ON EACH PLATE AS SHOWN.
3. UNLESS OTHERWISE SPECIFIED ALL DIMENSIONS ARE IN INCHES.
4. THE ENDS OF FROG BASE PLATES TO BE PAINTED WITH INSULATING PAINT AS SHOWN.

**MATERIAL**

PLATES TO CONFORM TO THE LATEST REVISION OF GO TRANSIT TRACK STANDARDS OR IN GENERAL WITH LATEST REVISION OF A.S.T.M. SPECIFICATION FOR COMMERCIAL QUALITY HOT ROLLED BAR STEEL A-675 CHEMICAL REQUIREMENT.

	MINIMUM	MAXIMUM
CARBON	0.15 %	0.25 %
MANGANESE	0.30 %	0.60 %
PHOSPHORUS		0.04 %
SULPHUR		0.05 %

METRIC CONVERSION: 1 inch=25.4mm, 1 foot=304.8mm

1	18/07/27	ADDED IMPERIAL TO METRIC CONVERSION NOTE	
No.	Date	Revision	By Approved

Standard/  
**MACHINING  
FROG BASE PLATES  
FOR NO 12 R.B.M. FROG 136 LB. R.E. RAILS**

Drawn	MG	Checked	GS	Approved	<i>[Signature]</i> VP Engineering & Asset Management
-------	----	---------	----	----------	---



Date	DEC 15, 2017	Plan Number	GTS-0610	Rev	1
------	--------------	-------------	----------	-----	---