

NOTES

1. WHEN REFERRING TO SWITCH PLATES, PLAN AND PLATE NUMBERS MUST BE STATED TO INDICATE SPECIFIC PLATE REQUIRED.
2. IDENTIFICATION CHARACTERS (1/2" MINIMUM HEIGHT) TO BE STAMPED ON EACH PLATE AS SHOWN.
3. ALL DIMENSIONS ARE IN INCHES.
4. UNLESS OTHERWISE SPECIFIED ALL TOLERANCES TO BE ±1/32.

MATERIAL

PLATES TO CONFORM TO THE LATEST REVISION OF GO TRANSIT TRACK STANDARDS OR IN GENERAL WITH LATEST REVISION OF A.S.T.M. SPECIFICATION FOR COMMERCIAL QUALITY HOT ROLLED BAR STEEL A-675 CHEMICAL REQUIREMENT.

	MINIMUM	MAXIMUM
CARBON	0.15 %	0.25 %
MANGANESE	0.30 %	0.60 %
PHOSPHORUS		0.04 %
SULPHUR		0.05 %

PLATES	A ±1/16	B	C +0 -1/32	D	E	WEIGHT (LBS.)	STOCK NUMBERS	
							NEW	PART WORN
SP-596R	19-1/4	17-7/8	9-43/64	2"	15/16			
SP-598R	19-3/4	18-3/8	10-13/32	2"	7/8			
SP-600R	20-1/4	18-7/8	11-11/64	2"	13/16			
SP-648R	19	17-5/8	9-3/4	2"	15/16			
SP-650R	19-3/4	18-3/8	10-9/16	2"	7/8			
SP-652R	20-1/2	19-1/8	11-27/64	2"	13/16			

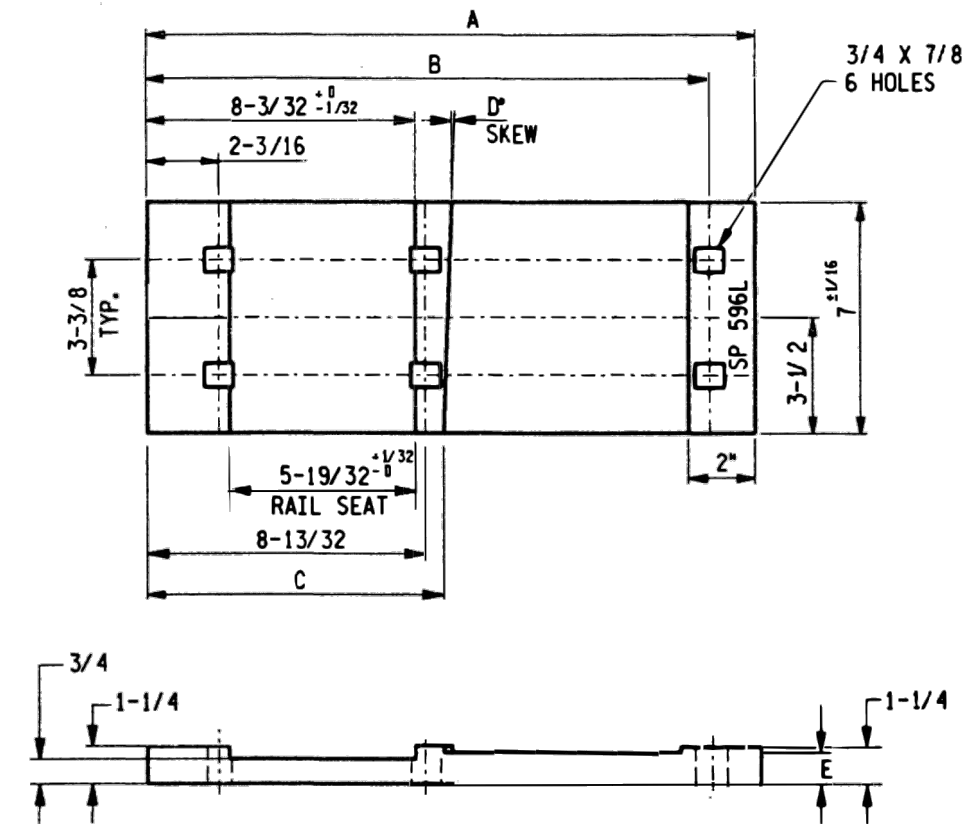
METRIC CONVERSION: 1 inch=25.4mm, 1 foot=304.8mm

1	18/07/27	ADDED IMPERIAL TO METRIC CONVERSION NOTE
No.	Date	Revision
		By Approved

Standard/	SWITCH PLATES RIGHT HAND	
Drawn MG	Checked GGS	Approved <i>[Signature]</i> VP Engineering & Asset Management



Date DEC 15, 2017	Plan Number GTS-0612	Rev 1
-------------------	----------------------	-------



NOTES

1. WHEN REFERRING TO SWITCH PLATES, PLAN AND PLATE NUMBERS MUST BE STATED TO INDICATE SPECIFIC PLATE REQUIRED.
2. IDENTIFICATION CHARACTERS (1/2" MINIMUM HEIGHT) TO BE STAMPED ON EACH PLATE AS SHOWN.
3. ALL DIMENSIONS ARE IN INCHES.
4. UNLESS OTHERWISE SPECIFIED ALL TOLERANCES TO BE ± 1/32.

MATERIAL

PLATES TO CONFORM TO THE LATEST REVISION OF GO TRANSIT TRACK STANDARDS OR IN GENERAL WITH LATEST REVISION OF A.S.T.M. SPECIFICATION FOR COMMERCIAL QUALITY HOT ROLLED BAR STEEL A-675 CHEMICAL REQUIREMENT.

	MINIMUM	MAXIMUM
CARBON	0.15 %	0.25 %
MANGANESE	0.30 %	0.60 %
PHOSPHORUS		0.04 %
SULPHUR		0.05 %

PLATES	A ± 1/16	B	C +0 -1/32	D	E	WEIGHT (LBS.)	STOCK NUMBERS	
							NEW	PART WORN
SP-596L	19-1/4	17-7/8	9-43/64	2"	15/16			
SP-598L	19-3/4	18-3/8	10-13/32	2"	7/8			
SP-600L	20-1/4	18-7/8	11-11/64	2"	13/16			
SP-648L	19	17-5/8	9-3/4	2"	15/16			
SP-650L	19-3/4	18-3/8	10-9/16	2"	7/8			
SP-652L	20-1/2	19-1/8	11-27/64	2"	13/16			

METRIC CONVERSION: 1 inch=25.4mm, 1 foot=304.8mm

1	18/07/27	ADDED IMPERIAL TO METRIC CONVERSION NOTE
No.	Date	Revision
		By Approved

Standard / **SWITCH PLATES LEFT HAND**

Drawn MG Checked GGS Approved *[Signature]*
VP Engineering & Asset Management



Date DEC 15, 2017 Plan Number GTS-0612 Rev 1

REFERENCE: TS-612 Sheet 2 OF 2