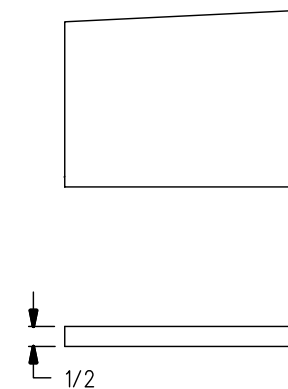
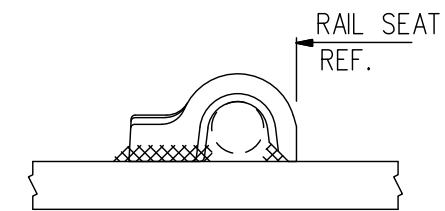


COUNTERSINK DETAIL



DETAIL



PANDROL SHOULDER DETAIL

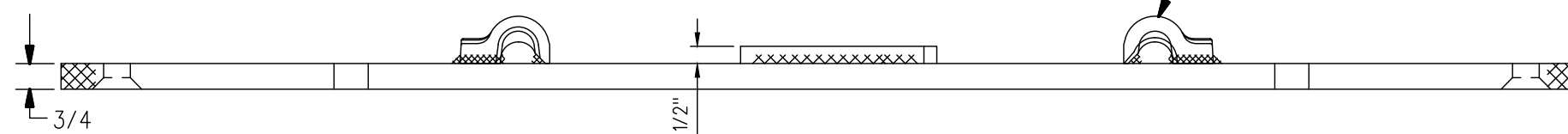
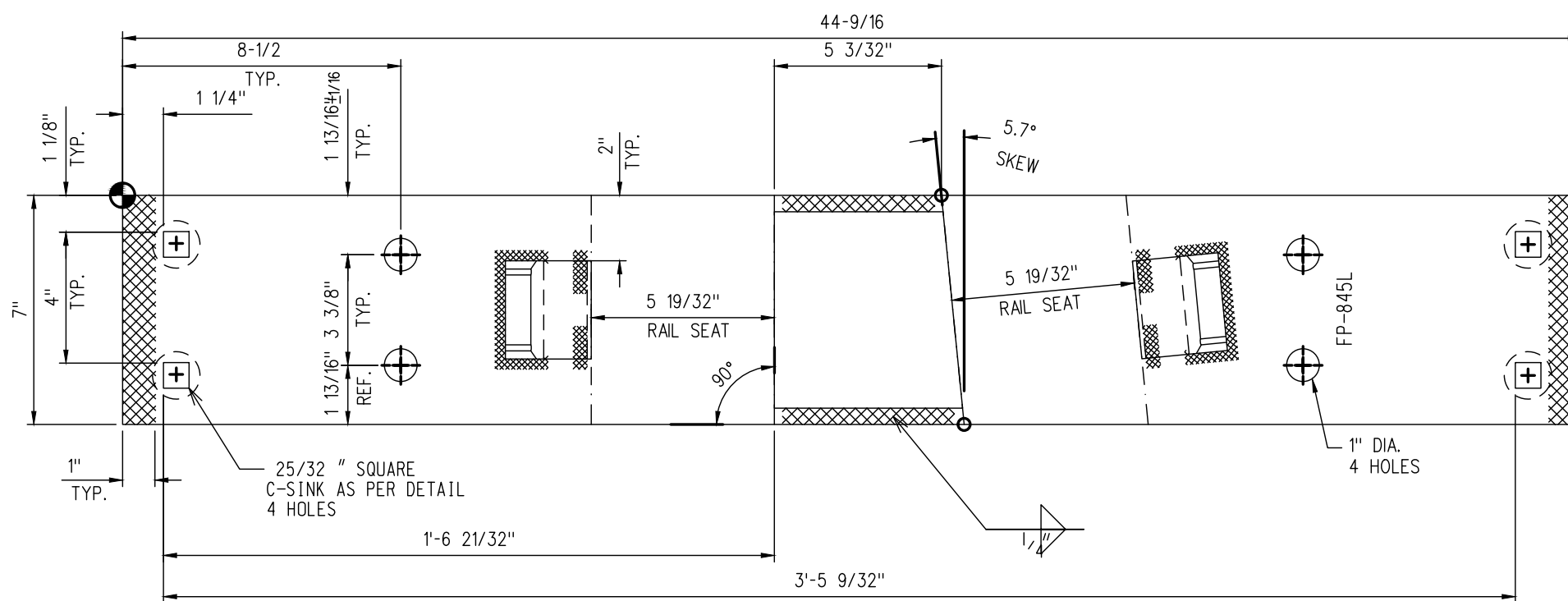
NOTES

1. WHEN REFERRING TO FROG PLATES, PLAN AND PLATE NUMBERS MUST BE STATED TO INDICATE SPECIFIC PLATE REQUIRED.
2. IDENTIFICATION CHARACTERS (1/2" MINIMUM HEIGHT) TO BE STAMPED ON EACH PLATE AS SHOWN.
3. ALL DIMENSIONS ARE IN INCHES.
4. UNLESS OTHERWISE SPECIFIED ALL TOLERANCES TO BE $\pm 1/32$.
5. TOLERANCES ARE NOT TO EXCEED THOSE INDICATED IN THE GO TOLERANCE DRAWINGS.

MATERIAL

PLATES TO CONFORM TO THE LATEST REVISION OF A.S.T.M. SPECIFICATION A-36 FOR COMMERCIAL QUALITY HOT ROLLED BAR STEEL CHEMICAL REQUIREMENT.

| | MINIMUM | MAXIMUM |
|------------|---------|---------|
| CARBON | 0.25 % | 0.29 % |
| MANGANESE | 0.60 % | 1.20 % |
| PHOSPHORUS | | 0.04 % |
| SULPHUR | | 0.05 % |
| SILICON | | 0.40 % |



METRIC CONVERSION: 1 inch=25.4mm, 1 foot=304.8mm

| | | | |
|-----|----------|--|-------------|
| 1 | 18/07/27 | ADDED IMPERIAL TO METRIC CONVERSION NOTE | |
| No. | Date | Revision | By Approved |

Standard / **FROG PLATES RIGHT HAND**

Drawn PCV Checked DL Approved *[Signature]* VP Engineering & Asset Management



Date SEPT 15/2017 Plan Number GTS-0615 Rev 1