

**NOTES**

1. WHEN REFERRING TO SWITCH PLATES, PLAN AND PLATE NUMBERS MUST BE STATED TO INDICATE SPECIFIC PLATE REQUIRED.
2. IDENTIFICATION CHARACTERS (1/2" MINIMUM HEIGHT) TO BE STAMPED ON EACH PLATE AS SHOWN.
3. ALL DIMENSIONS ARE IN INCHES.
4. UNLESS OTHERWISE SPECIFIED ALL TOLERANCES TO BE ± 1/32.

**MATERIAL**

PLATES TO CONFORM TO THE LATEST REVISION OF GO TRANSIT TRACK STANDARDS OR IN GENERAL WITH LATEST REVISION OF A.S.T.M. SPECIFICATION FOR COMMERCIAL QUALITY HOT ROLLED BAR STEEL A-675 CHEMICAL REQUIREMENT.

|            | MINIMUM | MAXIMUM |
|------------|---------|---------|
| CARBON     | 0.15 %  | 0.25 %  |
| MANGANESE  | 0.30 %  | 0.60 %  |
| PHOSPHORUS |         | 0.04 %  |
| SULPHUR    |         | 0.05 %  |

| PLATES  | A      | B      | C        | D  | E     | F       | G       | H     | WEIGHT (LBS.) | STOCK NUMBERS |           |
|---------|--------|--------|----------|----|-------|---------|---------|-------|---------------|---------------|-----------|
|         | ±1/8   | ±1/16  |          |    |       |         |         |       |               | NEW           | PART WORN |
| SP-661R | 24-3/4 | 23-3/8 | 14-11/32 | 5° | 7/8   | 1-45/64 | 1-13/16 | 5/16  |               |               |           |
| SP-662R | 25     | 23-5/8 | 14-25/32 | 5° | 27/32 | 2-9/64  | 2-17/64 | 11/32 |               |               |           |
| SP-663R | 25-1/4 | 23-7/8 | 15-15/64 | 5° | 13/16 | 2-37/64 | 2-45/64 | 3/8   |               |               |           |
| SP-664R | 25-1/2 | 24-1/8 | 15-45/64 | 5° | 25/32 | 3-3/64  | 3-11/64 | 13/32 |               |               |           |

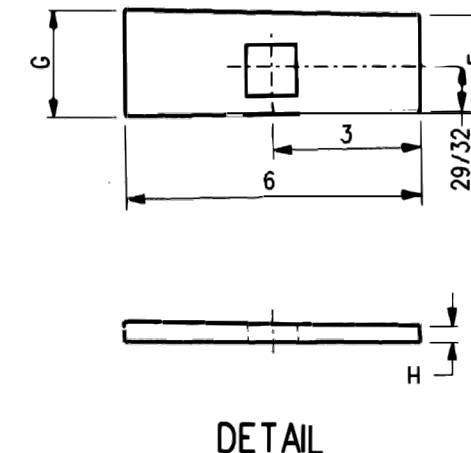
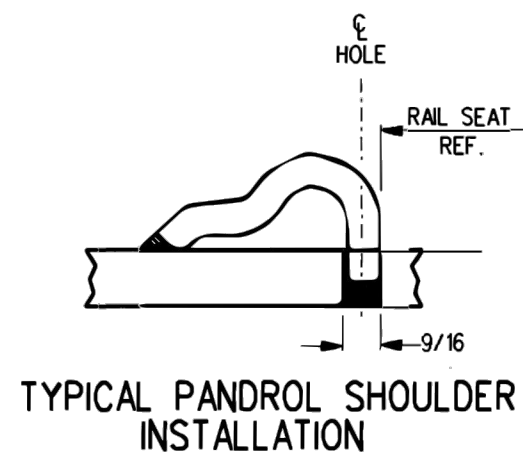
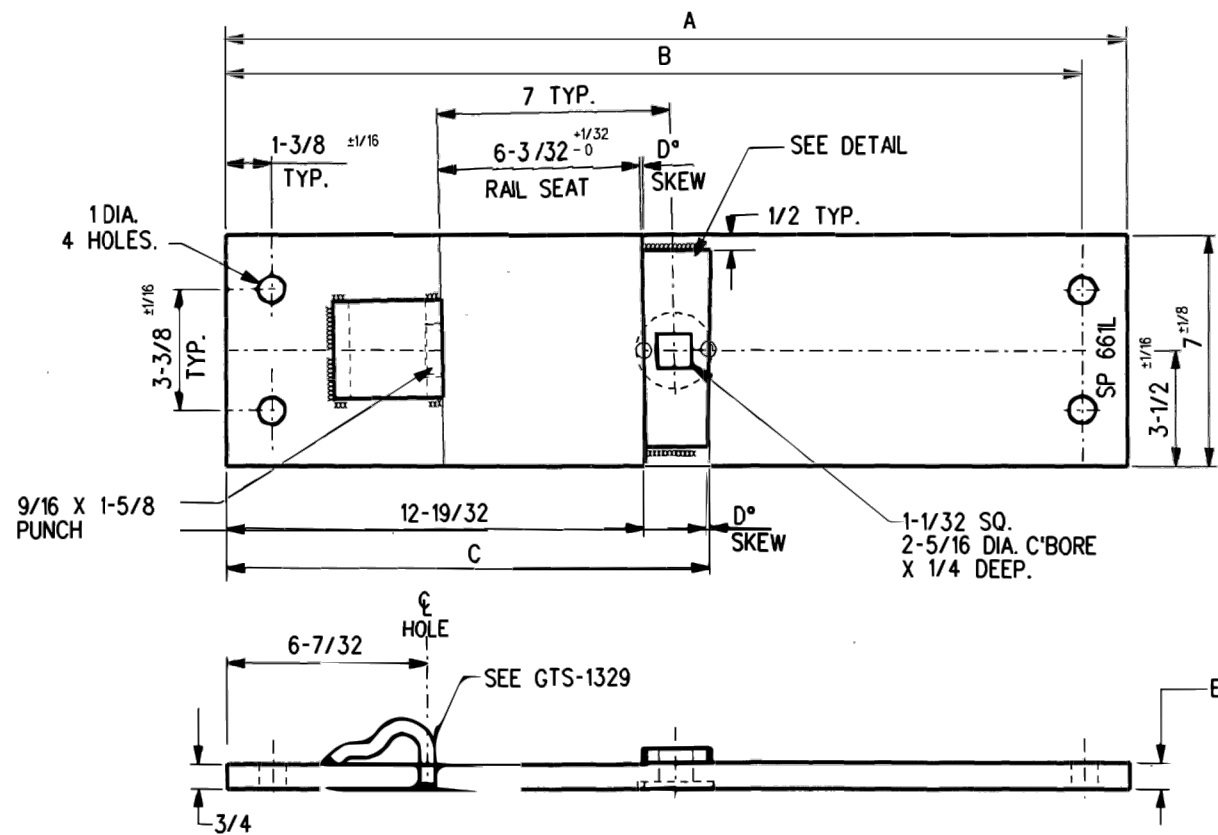
|     |          |                                 |
|-----|----------|---------------------------------|
| 0   | 17/12/15 | REVISED PDF VERSION ESTABLISHED |
| No. | Date     | Revision By Approved            |

Standard / **FOR EQUILATERAL TURNOUT SWITCH PLATES RIGHT HAND**

Drawn MG Checked RP Approved *RP* VP Corridor Infrastructure



Date DEC 15, 2017 Plan Number GTS-0640 Rev 0



**NOTES**

1. WHEN REFERRING TO SWITCH PLATES, PLAN AND PLATE NUMBERS MUST BE STATED TO INDICATE SPECIFIC PLATE REQUIRED.
2. IDENTIFICATION CHARACTERS (1/2" MINIMUM HEIGHT) TO BE STAMPED ON EACH PLATE AS SHOWN.
3. ALL DIMENSIONS ARE IN INCHES.
4. UNLESS OTHERWISE SPECIFIED ALL TOLERANCES TO BE ± 1/32.

**MATERIAL**

PLATES TO CONFORM TO THE LATEST REVISION OF GO TRANSIT TRACK STANDARDS OR IN GENERAL WITH LATEST REVISION OF A.S.T.M. SPECIFICATION FOR COMMERCIAL QUALITY HOT ROLLED BAR STEEL A-675 CHEMICAL REQUIREMENT.

|            | MINIMUM | MAXIMUM |
|------------|---------|---------|
| CARBON     | 0.15 %  | 0.25 %  |
| MANGANESE  | 0.30 %  | 0.60 %  |
| PHOSPHORUS |         | 0.04 %  |
| SULPHUR    |         | 0.05 %  |

| PLATES  | A      | B      | C        | D  | E     | F       | G       | H     | WEIGHT (LBS.) | STOCK NUMBERS |           |
|---------|--------|--------|----------|----|-------|---------|---------|-------|---------------|---------------|-----------|
|         | ±1/8   | ±1/16  |          |    |       |         |         |       |               | NEW           | PART WORN |
| SP-661L | 24-3/4 | 23-3/8 | 14-11/32 | 5° | 7/8   | 1-45/64 | 1-13/16 | 5/16  |               |               |           |
| SP-662L | 25     | 23-5/8 | 14-25/32 | 5° | 27/32 | 2-9/64  | 2-17/64 | 11/32 |               |               |           |
| SP-663L | 25-1/4 | 23-7/8 | 15-15/64 | 5° | 13/16 | 2-37/64 | 2-45/64 | 3/8   |               |               |           |
| SP-664L | 25-1/2 | 24-1/8 | 15-45/64 | 5° | 25/32 | 3-3/64  | 3-11/64 | 13/32 |               |               |           |

|     |          |                                 |
|-----|----------|---------------------------------|
| 0   | 17/12/15 | REVISED PDF VERSION ESTABLISHED |
| No. | Date     | Revision By Approved            |

Standard / **FOR EQUILATERAL TURNOUT SWITCH PLATES LEFT HAND**

Drawn MG Checked RP Approved *MBL*  
VP Corridor Infrastructure



Date DEC 15, 2017 Plan Number GTS-0640 Rev 0