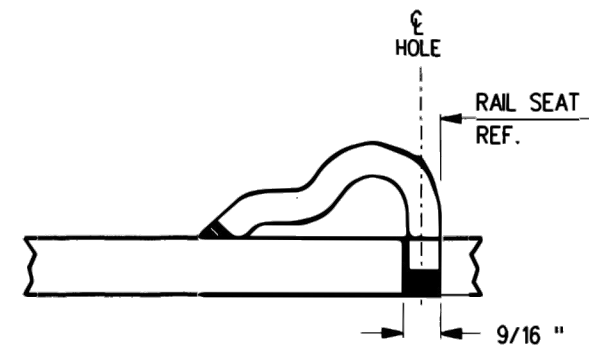


FROG
BASE PLATE
FP-615



TYPICAL PANDROL SHOULDER
INSTALLATION



NOTES:

1. WHEN REFERRING TO FROG BASE PLATES, PLAN AND PLATE NUMBERS MUST BE STATED TO INDICATE SPECIFIC PLATE REQUIRED.
2. IDENTIFICATION CHARACTERS (1/2" MINIMUM HEIGHT) TO BE STAMPED ON EACH PLATE AS SHOWN.
3. UNLESS OTHERWISE SPECIFIED ALL DIMENSIONS ARE IN INCHES.

MATERIAL:

PLATES TO CONFORM TO THE LATEST REVISION OF GO TRANSIT TRACK STANDARDS OR IN GENERAL WITH LATEST REVISION OF A.S.T.M. SPECIFICATION FOR COMMERCIAL QUALITY HOT ROLLED BAR STEEL A-675 CHEMICAL REQUIREMENT.

	MINIMUM	MAXIMUM
CARBON	0.15 %	0.25 %
MANGANESE	0.30 %	0.60 %
PHOSPHORUS		0.04 %
SULPHUR		0.05 %

0	17/12/15	REVISED PDF VERSION ESTABLISHED	
No.	Date	Revision	By Approved
MACHINING FROG BASE PLATES FOR NO 20 R.B.M. FROG 136 LB. R.E. RAILS			
Drawn	MG	Checked	RP
		Approved	<i>[Signature]</i> VP Corridor Infrastructure
			
Date	DEC 15, 2017	Plan Number	GTS-0645 Rev 0
REFERENCE: TS-645		Sheet 1 OF 1	