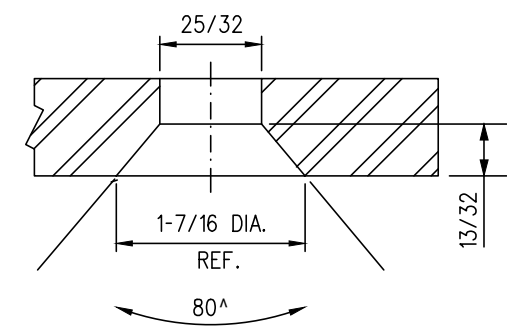


PANDROL SHOULDER DETAIL



COUNTERSINK DETAIL

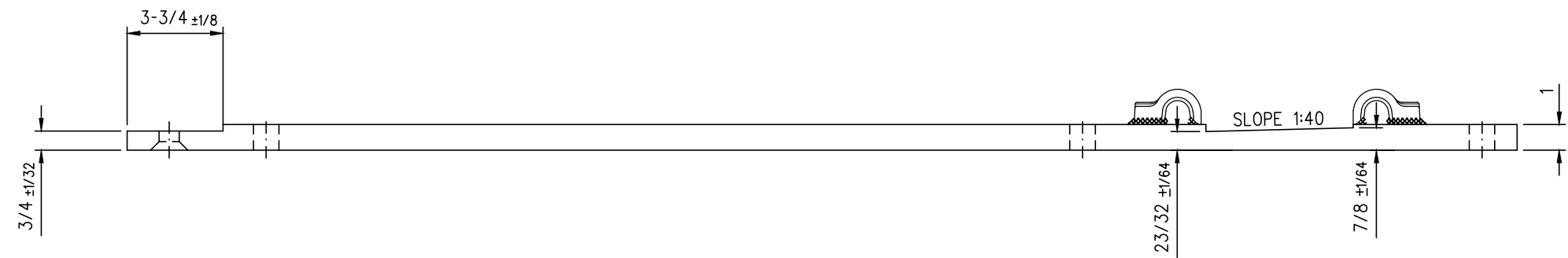
NOTES

1. WHEN REFERRING TO FROG PLATES, PLAN AND PLATE NUMBERS MUST BE STATED TO INDICATE SPECIFIC PLATE REQUIRED.
2. IDENTIFICATION CHARACTERS (1/2" MINIMUM HEIGHT) TO BE STAMPED ON EACH PLATE AS SHOWN.
3. ALL DIMENSIONS ARE IN INCHES.
4. UNLESS OTHERWISE SPECIFIED ALL TOLERANCES TO BE $\pm 1/32$.
5. TOLERANCES ARE NOT TO EXCEED THOSE INDICATED IN THE GO TOLERANCE DRAWINGS.
6. PLATE TO BE PAINTED WITH INSULATION PAINT ON 5 SIDES OF END AS SHOWN.

MATERIAL

PLATES TO CONFORM TO THE LATEST REVISION OF A.S.T.M. SPECIFICATION A-36 FOR COMMERCIAL QUALITY HOT ROLLED BAR STEEL CHEMICAL REQUIREMENT.

	MINIMUM	MAXIMUM
CARBON	0.25 %	0.29 %
MANGANESE	0.60 %	1.20 %
PHOSPHORUS		0.04 %
SULPHUR		0.05 %
SILICON		0.40 %



PLATES	A	B	C	D	WEIGHT (LBS.)	REPLACED BY	
	$\pm 1/8$	$\pm 1/32$	$\pm 1/16$			MARK No.	GTS DWG.
FP-756L	53-13/16	47-1/32	36	6°	100.4		
FP-766L	54-15/32	48-3/32	37	5°	104.2		
FP-777L	53-13/16	47-47/64	37	4°	104.0		
FP-789L	54-3/8	48-7/32	37	3°	103.0		

0	17/09/15	DWG VERSION ESTABLISHED
No.	Date	Revision
		By Approved

Standard / **FROG PLATE LEFT HAND**

Drawn BH Checked DL Approved *[Signature]*
VP Corridor Infrastructure



Date SEPT 15/2017 Plan Number GTS-0662 Rev 0