

TYPICAL PANDROL SHOULDER INSTALLATION

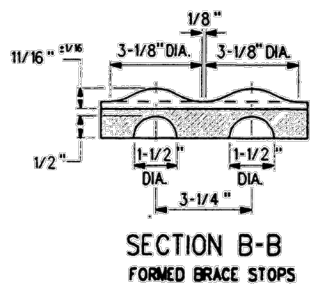
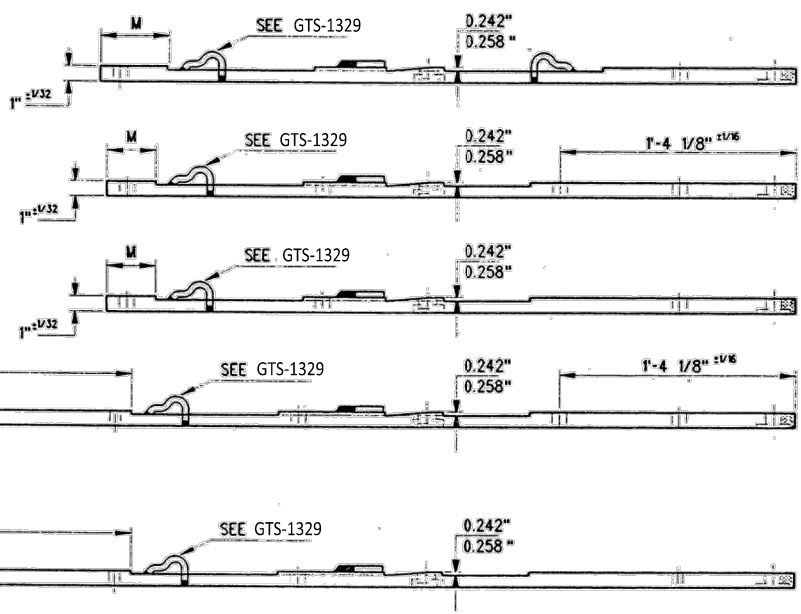
GAUGE PLATE GP-218

GAUGE PLATE GP-224

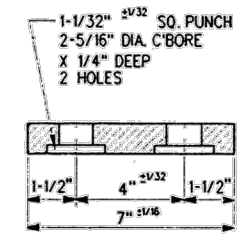
GAUGE PLATE GP-226

GAUGE PLATE GP-220

GAUGE PLATE GP-222



SECTION B-B FORMED BRACE STOPS



SECTION C-C

NOTES

- IDENTIFICATION CHARACTERS (3/4" MINIMUM HEIGHT) TO BE STAMPED ON EACH PLATE AS SHOWN.
- 1/4"x2"x5 1/2" SPECIAL PAD TO BE WELDED 3 SIDES- 1/4" FILLET OR TWO 3 1/8" DIA. BOSSES 1/2" DEEP AND SPREAD 3 1/4" APART SYMMETRICAL ABOUT SECTION B-B.
- INSULATION BOLT HOLES MUST HAVE BURRS REMOVED.
- ALL HOLES TO BE PUNCHED OR DRILLED. THE USE OF ACETYLENE TORCH OR OTHER BURNING METHOD FOR THE MAKING OF HOLES OR CUTTING IN THE MANUFACTURE OF GAUGE PLATES IS ABSOLUTELY PROHIBITED.
- WHEN REFERRING TO GAUGE PLATE HALVES, PLAN AND PLATE NUMBER MUST BE STATED TO INDICATE SPECIFIC PLATE REQUIRED.
- FOR ASSEMBLY OF GAUGE PLATES, SEE PLAN TS-680.
- THE ADJOINING ENDS OF ALL GAUGE PLATE HALVES TO BE PAINTED WITH INSULATING PAINT AS

MATERIAL

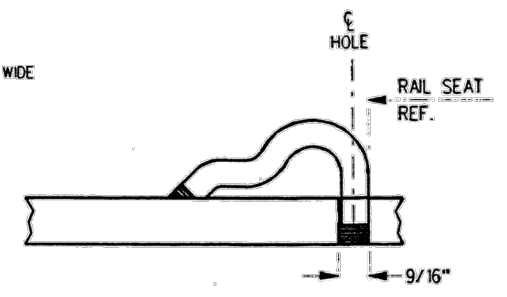
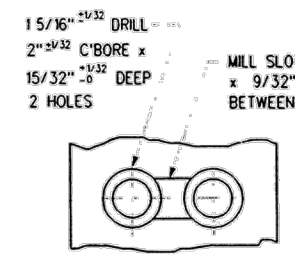
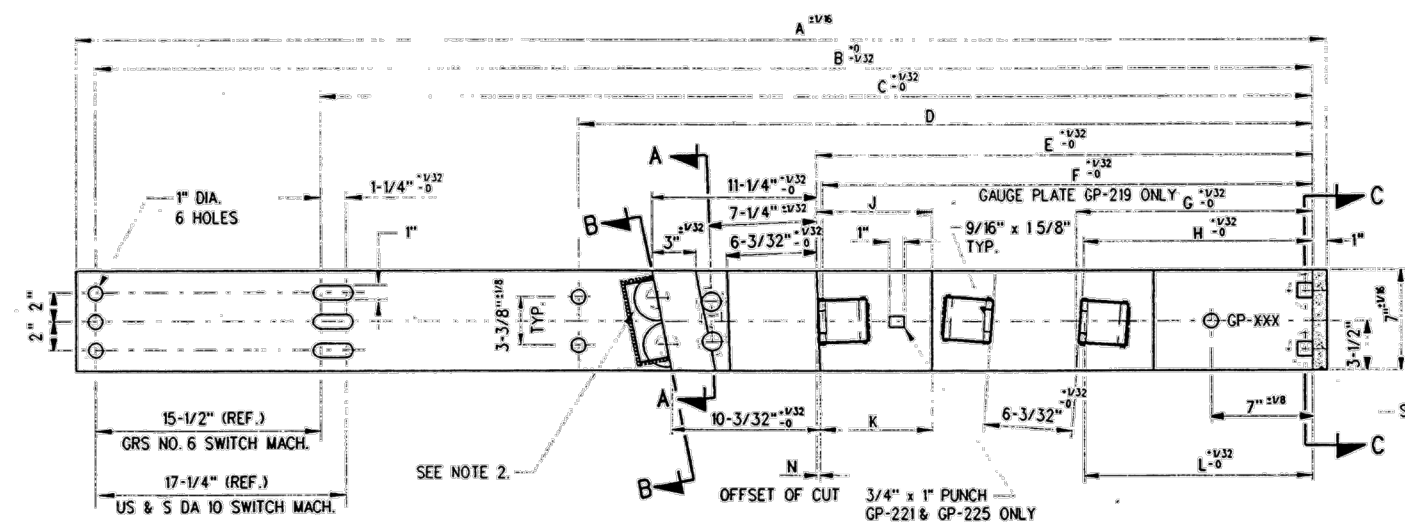
PLATES TO CONFORM TO THE LATEST REVISION OF GO TRANSIT TRACK STANDARDS OR IN GENERAL WITH LATEST REVISION OF A.S.T.M. SPECIFICATION FOR COMMERCIAL QUALITY HOT ROLLED BAR STEEL A-675 CHEMICAL REQUIREMENT.

	MINIMUM	MAXIMUM
CARBON	0.15 %	0.25 %
MANGANESE	0.30 %	0.60 %
PHOSPHORUS		0.04 %
SULPHUR		0.05 %

GAUGE PLATES	A ±0.000	B ±0.000	C ±0.000	D	E ±0.000	F ±0.000	G ±0.000	H ±0.000	J ±0.000	K	L ±0.000	M
GP 218	4'-0"	NO HOLE	NO HOLE	3'-9 25/32"	3'-2 5/8"	3'-2 19/32"	3'-2 1/8"	1'-5 15/16"	1'-5 21/32"	4"	NO HOLE	5"
GP 224	3'-11 1/2"	NO HOLE	NO HOLE	3'-9 1/16"	3'-3 3/8"	3'-3 11/32"	3'-2 27/32"	1'-5 7/32"	NO SLOT	0"	2'-8 1/4"	3 1/2"
GP 226	4'-1 3/4"	NO HOLE	NO HOLE	3'-11 1/4"	3'-4 31/32"	3'-4 15/16"	3'-4 7/16"	1'-5 7/32"	NO SLOT	0"	2'-10 7/8"	4"
GP 220	7'-8 3/4"	7'-6 3/8"	6'-2 7/8"	3'-9 1/16"	3'-3 3/8"	3'-3 11/32"	3'-2 27/32"	1'-5 7/32"	NO SLOT	0"	2'-8 1/4"	4'-0 5/8"
GP 222	7'-8 3/4"	7'-6 3/8"	6'-2 7/8"	3'-11 1/4"	3'-4 31/32"	3'-4 15/16"	3'-4 7/16"	1'-5 7/32"	NO SLOT	0"	2'-10 7/8"	3'-11"

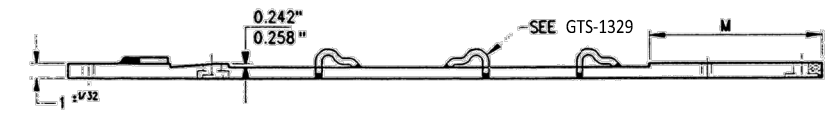
0	17/12/15	REVISED PDF VERSION ESTABLISHED	
No.	Date	Revision	By Approved
Standard		INSULATED GAUGE PLATES (HALVES) FOR RIGHT HAND LAP TURNOUTS 136 LB. RAILS	
Drawn	MG	Checked	GGG Approved <i>KBL</i> VP Corridor Infrastructure
Date		Plan Number	Rev
DEC 15, 2017		GTS-0692	0
REFERENCE: TS-692		Sheet 1 OF 2	





TYPICAL PANDROL SHOULDER INSTALLATION

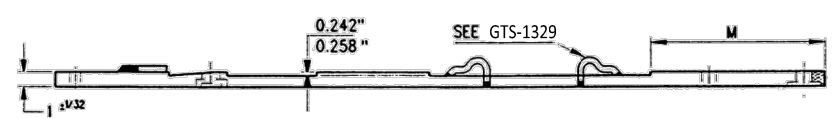
GAUGE PLATE GP-219



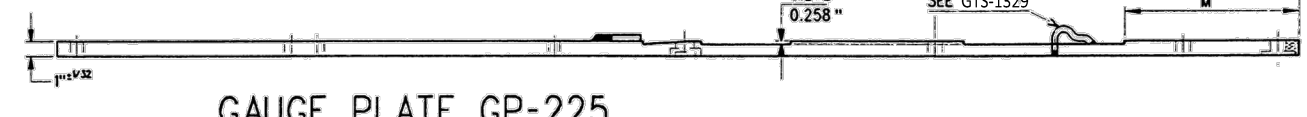
GAUGE PLATE GP-221



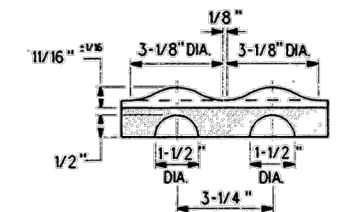
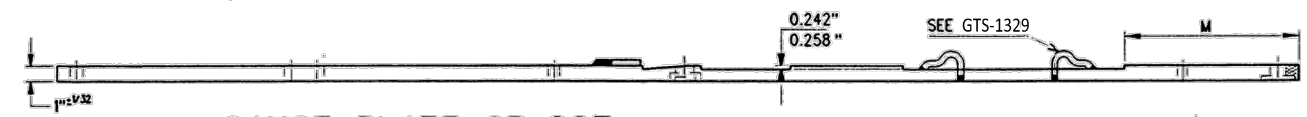
GAUGE PLATE GP-223



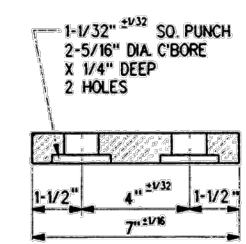
GAUGE PLATE GP-225



GAUGE PLATE GP-227



SECTION B-B
FORMED BRACE STOPS



SECTION C-C

NOTES

- IDENTIFICATION CHARACTERS (3/4" MINIMUM HEIGHT) TO BE STAMPED ON EACH PLATE AS SHOWN.
- 1/4"x2"x5 1/2" SPECIAL PAD TO BE WELDED 3 SIDES- 1/4" FILLET OR TWO 3 1/8" DIA. BOSSES 1/2" DEEP AND SPREAD 3 1/4" APART SYMMETRICAL ABOUT SECTION B-B.
- INSULATION BOLT HOLES MUST HAVE BURRS REMOVED.
- ALL HOLES TO BE PUNCHED OR DRILLED. THE USE OF ACETYLENE TORCH OR OTHER BURNING METHOD FOR THE MAKING OF HOLES OR CUTTING IN THE MANUFACTURE OF GAUGE PLATES IS ABSOLUTELY PROHIBITED.
- WHEN REFERRING TO GAUGE PLATE HALVES, PLAN AND PLATE NUMBER MUST BE STATED TO INDICATE SPECIFIC PLATE REQUIRED.
- FOR ASSEMBLY OF GAUGE PLATES, SEE PLAN TS-680.
- THE ADJOINING ENDS OF ALL GAUGE PLATE HALVES TO BE PAINTED WITH INSULATING PAINT AS

MATERIAL

PLATES TO CONFORM TO THE LATEST REVISION OF GO TRANSIT TRACK STANDARDS OR IN GENERAL WITH LATEST REVISION OF A.S.T.M. SPECIFICATION FOR COMMERCIAL QUALITY HOT ROLLED BAR STEEL A-675 CHEMICAL REQUIREMENT.

	MINIMUM	MAXIMUM
CARBON	0.15 %	0.25 %
MANGANESE	0.30 %	0.60 %
PHOSPHORUS		0.04 %
SULPHUR		0.05 %

GAUGE PLATE DIMENSIONS													
GAUGE PLATES	A ±1/16	B +0 -1/32	C +1/32 -0	D	E +1/32 -0	F +1/32 -0	G +1/32 -0	H +1/32 -0	J	K	L +1/32 -0	M	N
GP 219	4'-3"	NO HOLE	NO HOLE	4'-0 9/32"	2'-8 23/32"	2'-8 7/16"	1'-6 3/4"	1'-6 5/16"	0"	0"	1'-6 1/4"	1'-11 1/2"	0
GP 221	4'-3 1/2"	NO HOLE	NO HOLE	4'-1"	2'-9 11/16"	NO HOLE	1'-6 1/16"	1'-5 9/16"	10	9 5/16	1'-5 1/2"	12"	7/32"
GP 223	4'-4"	NO HOLE	NO HOLE	4'-1 1/2"	2'-10 3/8"	NO HOLE	1'-4 1/2"	1'-3 31/32"	7 15/16"	7 11/16	1'-3 15/16"	12"	7/32"
GP 225	7'-9 1/2"	7'-7"	6'-3 1/2"	4'-1"	2'-9 11/16"	NO HOLE	1'-6 1/16"	1'-5 9/16"	10	9 5/16	1'-5 1/2"	12"	7/32"
GP 227	7'-9 1/2"	7'-7"	6'-3 1/2"	4'-1 1/2"	2'-10 3/8"	NO HOLE	1'-4 1/2"	1'-3 31/32"	7 15/16"	7 11/16	1'-3 15/16"	12"	7/32"

0	17/12/15	REVISED PDF VERSION ESTABLISHED	
No.	Date	Revision	By Approved
Standard		INSULATED GAUGE PLATES (HALVES) FOR RIGHT HAND LAP TURNOUTS 136 LB. RAILS	
Drawn	MG	Checked	Approved
		GGG	VP Corridor Infrastructure
Date		Plan Number	Rev
DEC 15, 2017		GTS-0692	0
REFERENCE: TS-692		Sheet 2 OF 2	

