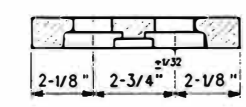
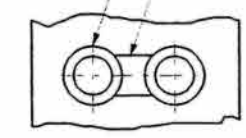
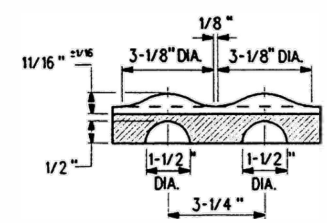


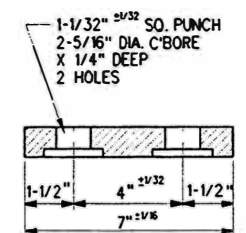
TYPICAL PANDROL SHOULDER INSTALLATION



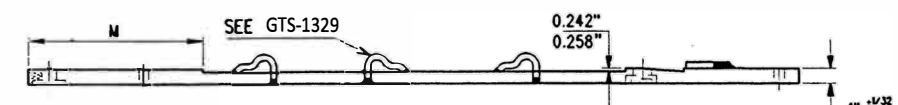
SECTION A-A



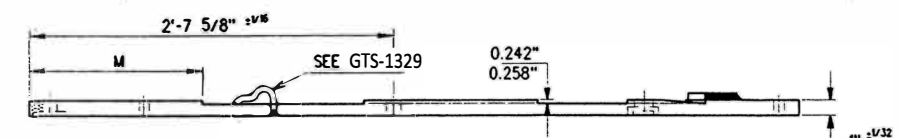
SECTION B-B
FORMED BRACE STOPS



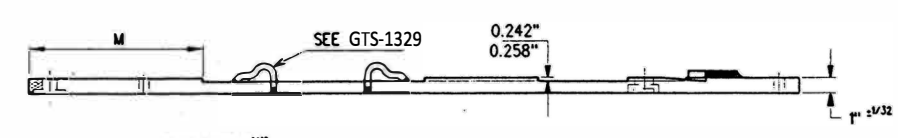
SECTION C-C



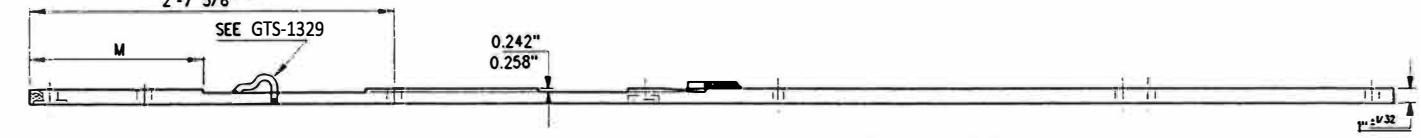
GAUGE PLATE GP-232



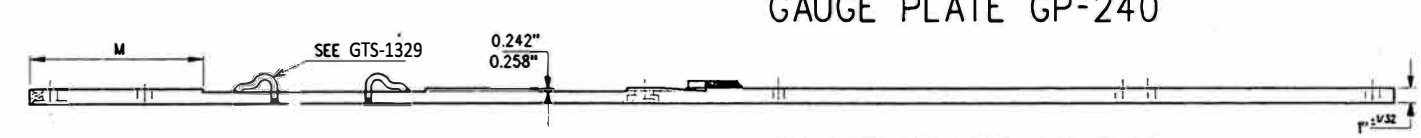
GAUGE PLATE GP-234



GAUGE PLATE GP-236



GAUGE PLATE GP-240



GAUGE PLATE GP-242

NOTES

- IDENTIFICATION CHARACTERS (3/4" MINIMUM HEIGHT) TO BE STAMPED ON EACH PLATE AS SHOWN.
- 1/4"x2"x5 1/2" SPECIAL PAD TO BE WELDED 3 SIDES- 1/4" FILLET OR TWO 3 1/8" DIA. BOSSES 1/2" DEEP AND SPREAD 3 1/4" APART SYMMETRICAL ABOUT SECTION B-B.
- INSULATION BOLT HOLES MUST HAVE BURRS REMOVED.
- ALL HOLES TO BE PUNCHED OR DRILLED. THE USE OF ACETYLENE TORCH OR OTHER BURNING METHOD FOR THE MAKING OF HOLES OR CUTTING IN THE MANUFACTURE OF GAUGE PLATES IS ABSOLUTELY PROHIBITED.
- WHEN REFERRING TO GAUGE PLATE HALVES, PLAN AND PLATE NUMBER MUST BE STATED TO INDICATE SPECIFIC PLATE REQUIRED.
- FOR ASSEMBLY OF GAUGE PLATES, SEE PLAN GTS-680.
- THE ADJOINING ENDS OF ALL GAUGE PLATE HALVES TO BE PAINTED WITH INSULATING PAINT AS

MATERIAL

PLATES TO CONFORM TO THE LATEST REVISION OF GO TRANSIT TRACK STANDARDS OR IN GENERAL WITH LATEST REVISION OF A.S.T.M. SPECIFICATION FOR COMMERCIAL QUALITY HOT ROLLED BAR STEEL A-675 CHEMICAL REQUIREMENT.

	MINIMUM	MAXIMUM
CARBON	0.15 %	0.25 %
MANGANESE	0.30 %	0.60 %
PHOSPHORUS		0.04 %
SULPHUR		0.05 %

GAUGE PLATE DIMENSIONS													
GAUGE PLATES	A ±1/16	B +0 -1/32	C +1/32 -0	D	E +1/32 -0	F +1/32 -0	G +1/32 -0	H +1/32 -0	J	K	L +1/32 -0	M	N
GP 232	4'-3"	NO HOLE	NO HOLE	4'-0 9/32"	2'-8 23/32"	2'-8 7/16"	1'-6 3/4"	1'-6 5/16"	0"	0"	1'-6 1/4"	1'-1 1/2"	0
GP 234	4'-3 1/2"	NO HOLE	NO HOLE	4'-1"	2'-9 11/16"	NO HOLE	1'-6 1/16"	1'-5 9/16"	10"	9 5/16"	1'-5 1/2"	12"	7/32"
GP 236	4'-4"	NO HOLE	NO HOLE	4'-1 1/2"	2'-10 3/8"	NO HOLE	1'-4 1/2"	1'-3 31/32"	7 15/16"	7 11/16"	1'-3 15/16"	12"	7/32"
GP 240	7'-9 1/2"	7'-7"	6'-3 1/2"	4'-1"	2'-9 11/16"	NO HOLE	1'-6 1/16"	1'-5 9/16"	10"	9 5/16"	1'-5 1/2"	12"	7/32"
GP 242	7'-9 1/2"	7'-7"	6'-3 1/2"	4'-1 1/2"	2'-10 3/8"	NO HOLE	1'-4 1/2"	1'-3 31/32"	7 15/16"	7 11/16"	1'-3 15/16"	12"	7/32"

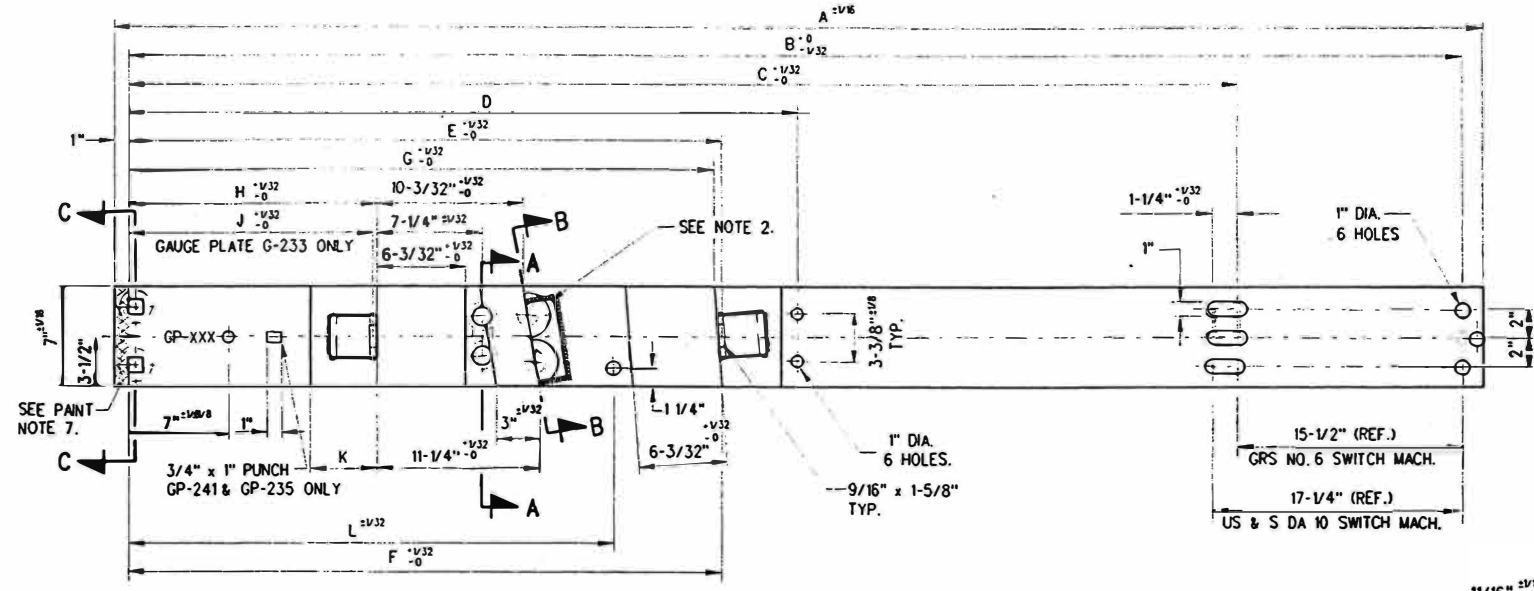
0	17/12/15	REVISED PDF VERSION ESTABLISHED	
No.	Date	Revision	By Approved

Standard / **INSULATED GAUGE PLATES (HALVES) FOR LEFT HAND LAP TURNOUTS 136 LB. RAILS**

Drawn MG Checked GGS Approved *[Signature]*
VP_Corridor_Infrastructure

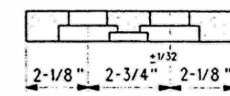
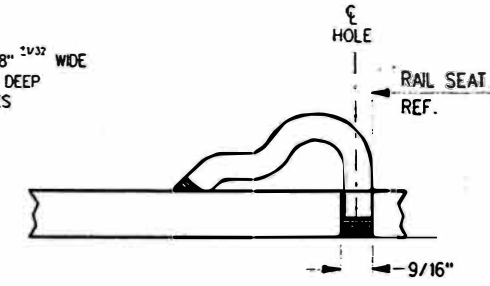
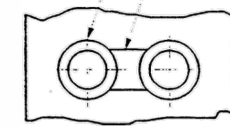


Date	DEC 15, 2017	Plan Number	GTS-0693	Rev	0
------	--------------	-------------	----------	-----	---



1 5/16" ^{+1/32} DRILL
 2" ^{+1/32} C'BORE x
 15/32" ^{+1/32} DEEP
 2 HOLES

MILL SLOT 1 3/8" ^{+1/32} WIDE
 x 9/32" ^{+1/32} DEEP
 BETWEEN HOLES

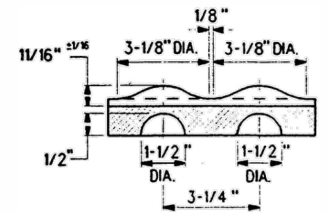


SECTION A-A

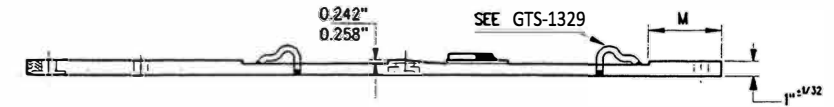
TYPICAL PANDROL SHOULDER INSTALLATION

NOTES

- IDENTIFICATION CHARACTERS (3/4" MINIMUM HEIGHT) TO BE STAMPED ON EACH PLATE AS SHOWN.
- 1/4"x2"x5 1/2" SPECIAL PAD TO BE WELDED 3 SIDES- 1/4" FILLET OR TWO 3 1/8" DIA BOSSES 1/2" DEEP AND SPREAD 3 1/4" APART SYMMETRICAL ABOUT SECTION B-B.
- INSULATION BOLT HOLES MUST HAVE BURRS REMOVED.
- ALL HOLES TO BE PUNCHED OR DRILLED. THE USE OF ACETYLENE TORCH OR OTHER BURNING METHOD FOR THE MAKING OF HOLES OR CUTTING IN THE MANUFACTURE OF GAUGE PLATES IS ABSOLUTELY PROHIBITED.
- WHEN REFERRING TO GAUGE PLATE HALVES, PLAN AND PLATE NUMBER MUST BE STATED TO INDICATE SPECIFIC PLATE REQUIRED.
- FOR ASSEMBLY OF GAUGE PLATES, SEE PLAN GTS-680.
- THE ADJOINING ENDS OF ALL GAUGE PLATE HALVES TO BE PAINTED WITH INSULATING PAINT AS



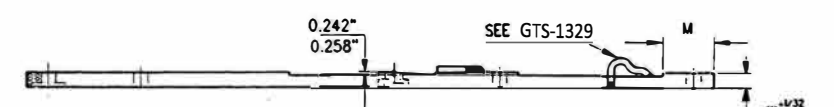
SECTION B-B
FORMED BRACE STOPS



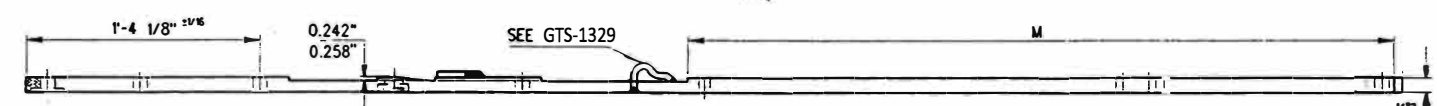
GAUGE PLATE GP-233



GAUGE PLATE GP-241



GAUGE PLATE GP-243

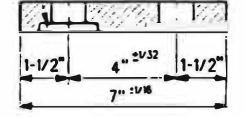


GAUGE PLATE GP-235



GAUGE PLATE GP-237

1-1/32" ^{+1/32} SO. PUNCH
 2-5/16" DIA. C'BORE
 x 1/4" DEEP
 2 HOLES



SECTION C-C

GAUGE PLATE DIMENSIONS												
GAUGE PLATES	A ±1/16	B +0 -1/32	C +1/32 -0	D	E +1/32 -0	F +1/32 -0	G +1/32 -0	H +1/32 -0	J	K +1/32 -0	L	M
GP 233	4'-0"	NO HOLE	NO HOLE	3'-9 25/32"	3'-2 5/8"	3'-2 19/32"	3'-2 1/8"	1'-5 15/16"	1'-5 21/32"	4"	NO HOLE	5"
GP 241	3'-11 1/2"	NO HOLE	NO HOLE	3'-9 1/16"	3'-3 3/8"	3'-3 11/32"	3'-2 27/32"	1'-5 7/32"	NO SLOT	0"	2'-8 1/4"	3 1/2"
GP 243	4'-1 3/4"	NO HOLE	NO HOLE	3'-11 1/4"	3'-4 31/32"	3'-4 15/16"	3'-4 7/16"	1'-5 7/32"	NO SLOT	0"	2'-10 7/8"	4"
GP 235	7'-8 3/4"	7'-6 3/8"	6'-2 7/8"	3'-9 1/16"	3'-3 3/8"	3'-3 11/32"	3'-2 27/32"	1'-5 7/32"	NO SLOT	0"	2'-8 1/4"	4'-0 5/8"
GP 237	7'-8 3/4"	7'-6 3/8"	6'-2 7/8"	3'-11 1/4"	3'-4 31/32"	3'-4 15/16"	3'-4 7/16"	1'-5 7/32"	NO SLOT	0"	2'-10 7/8"	3'-11"

0	17/12/15	REVISED PDF VERSION ESTABLISHED	
No.	Date	Revision	By Approved

Standard / **INSULATED GAUGE PLATES (HALVES) FOR LEFT HAND LAP TURNOUTS 136 LB.RAILS**

Drawn MG Checked GGS Approved *[Signature]*
 VP_Corridor_Infrastructure



Date DEC 15, 2017 Plan Number GTS-0693 Rev 0