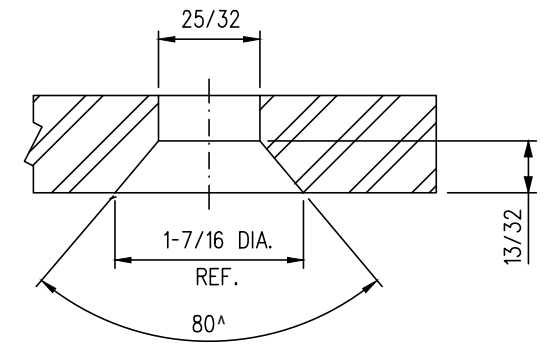


TYPICAL SHOULDER INSTALLATION



COUNTERSINK DETAIL



FROG PLATE

NOTES

1. WHEN REFERRING TO FROG PLATES, PLAN AND PLATE NUMBERS MUST BE STATED TO INDICATE SPECIFIC PLATE REQUIRED.
2. IDENTIFICATION CHARACTERS (1/2" MINIMUM HEIGHT) TO BE STAMPED ON EACH PLATE AS SHOWN.
3. ALL DIMENSIONS ARE IN INCHES.
4. UNLESS OTHERWISE SPECIFIED ALL TOLERANCES TO BE ±1/32.
5. TOLERANCES ARE NOT TO EXCEED THOSE INDICATED IN THE GO TOLERANCE DRAWINGS.
6. PLATE TO BE PAINTED WITH INSULATION PAINT ON 5 SIDES OF END AS SHOWN

MATERIAL

PLATES TO CONFORM TO THE LATEST REVISION OF A.S.T.M. SPECIFICATION A-36 FOR COMMERCIAL QUALITY HOT ROLLED BAR STEEL CHEMICAL REQUIREMENT.

	MINIMUM	MAXIMUM
CARBON	0.25 %	0.29 %
MANGANESE	0.60 %	1.20 %
PHOSPHORUS		0.04 %
SULPHUR		0.05 %
SILICON		0.40 %

PLATES	A	B	C	D	E	WEIGHT (LBS.)	REPLACED BY	
	±1/16	±1/32	±1/32	±1/32	±1/32		MARK No.	GTS DWG.
FP-799R	42-9/16	12-13/16	17-5/8	12-1/2	18-5/32	81.0		
FP-805R	50-5/32	15-3/16	20-15/32	14-19/32	21	94.0		

0	17/09/15	DWG VERSION ESTABLISHED	
No.	Date	Revision	By Approved
Standard/		FROG PLATES RIGHT HAND	
Drawn	PCV	Checked	DL
		Approved	<i>Kelly</i> VP Corridor Infrastructure
Date	SEPT 15/2017	Plan Number	GTS-0694
		Rev	0
REFERENCE: TS-0694_SH3_R0		Sheet 3 OF 4	