

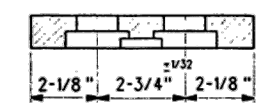
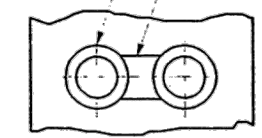
GAUGE PLATE GP-216 & GP-217



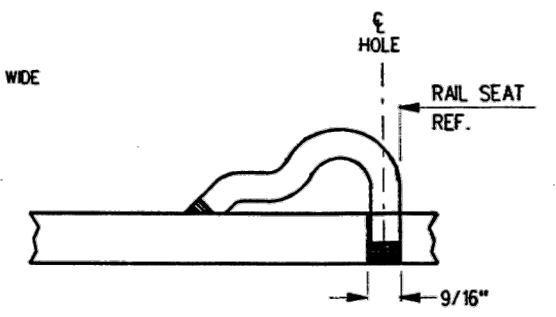
GAUGE PLATE GP-228 & GP-229

1 5/16" ±.001 DRILL
 2" ±.001 C'BORE x
 15/32" ±.001 DEEP
 2 HOLES

MILL SLOT 1 3/8" ±.001 WIDE
 x 9/32" ±.001 DEEP
 BETWEEN HOLES



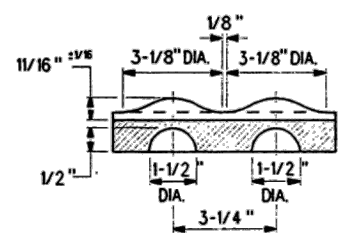
SECTION A-A



TYPICAL PANDROL SHOULDER INSTALLATION

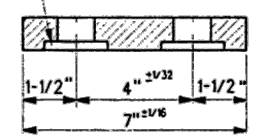
NOTES

1. IDENTIFICATION CHARACTERS (3/4" MINIMUM HEIGHT) TO BE STAMPED ON EACH PLATE AS SHOWN.
2. 1/4"x2"x5 1/2" SPECIAL PAD TO BE WELDED 3 SIDES- 1/4" FILLET OR TWO 3 1/8" DIA. BOSSES 1/2" DEEP AND SPREAD 3 1/4" APART SYMMETRICAL ABOUT SECTION B-B.
3. INSULATION BOLT HOLES MUST HAVE BURRS REMOVED.
4. ALL HOLES TO BE PUNCHED OR DRILLED. THE USE OF ACETYLENE TORCH OR OTHER BURNING METHOD FOR THE MAKING OF HOLES OR CUTTING IN THE MANUFACTURE OF GAUGE PLATES IS ABSOLUTELY PROHIBITED.
5. WHEN REFERRING TO GAUGE PLATE HALVES, PLAN AND PLATE NUMBER MUST BE STATED TO INDICATE SPECIFIC PLATE REQUIRED.
6. FOR ASSEMBLY OF GAUGE PLATES, SEE PLAN GTS-0680
7. THE ADJOINING ENDS OF ALL GAUGE PLATE HALVES TO BE PAINTED WITH INSULATING PAINT AS



SECTION B-B
FORMED BRACE STOPS

1-1/32" ±.001 SQ. PUNCH
 2-5/16" DIA. C'BORE
 x 1/4" DEEP
 2 HOLES



SECTION C-C

| GAUGE PLATE DIMENSIONS | | | | | | | |
|------------------------|-----------|-------------|-----------|-----------|------------|-------------|----|
| GAUGE PLATES | A | B | C | D | E | F | G |
| GP 216 | 3'-8" | NO HOLE | NO HOLE | 3'-5 5/8" | 2'-1 9/16" | 1'-11 9/16" | 2" |
| GP 217 | 3'-8" | NO HOLE | NO HOLE | 3'-5 5/8" | 2'-2 1/4" | NO HOLE | 2" |
| GP 228 | 7'-1 1/4" | 6'-10 1/4" | 6'-3 1/2" | 3'-5 7/8" | 2'-1 9/16" | 1'-11 9/16" | 2" |
| GP 229 | 7'-2" | 6'-11 7/16" | 6'-3 1/2" | 3'-6 1/4" | 2'-2 1/4" | NO HOLE | 2" |

MATERIAL

PLATES TO CONFORM TO THE LATEST REVISION OF GO TRANSIT TRACK STANDARDS OR IN GENERAL WITH LATEST REVISION OF A.S.T.M. SPECIFICATION FOR COMMERCIAL QUALITY HOT ROLLED BAR STEEL A-675 CHEMICAL REQUIREMENT.

| | MINIMUM | MAXIMUM |
|------------|---------|---------|
| CARBON | 0.15 % | 0.25 % |
| MANGANESE | 0.30 % | 0.60 % |
| PHOSPHORUS | | 0.04 % |
| SULPHUR | | 0.05 % |

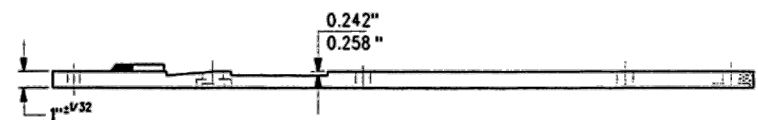
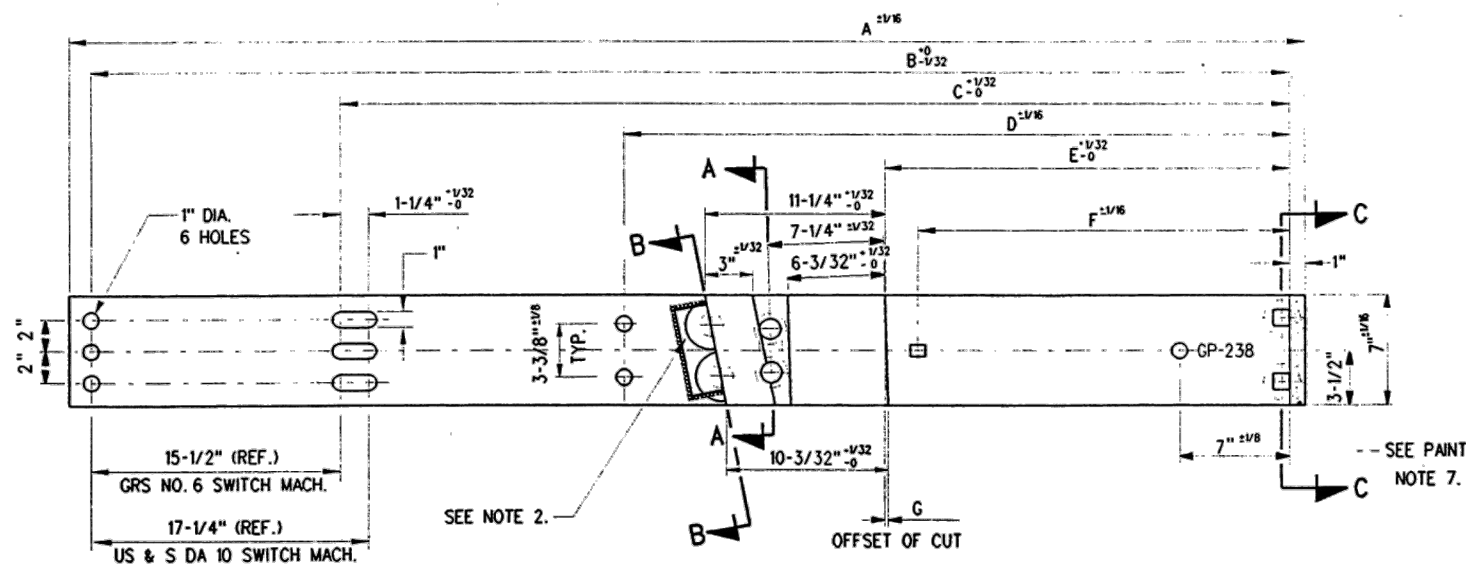
| | | | |
|-----|----------|---------------------------------|-------------|
| 0 | 17/12/15 | REVISED PDF VERSION ESTABLISHED | |
| No. | Date | Revision | By Approved |

Standard / INSULATED
GAUGE PLATES (HALVES)
 FOR RIGHT HAND LAP TURNOUTS
136 LB.RAILS

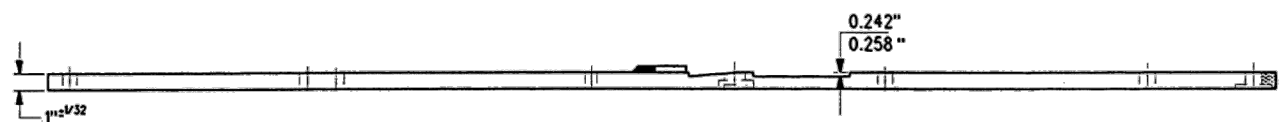
Drawn MG Checked GGS Approved *KBL*
 VP Corridor Infrastructure



Date DEC 15, 2017 Plan Number GTS-0695 Rev 0



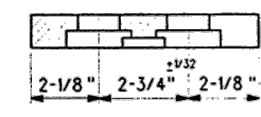
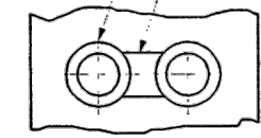
GAUGE PLATE GP-230 & GP-231



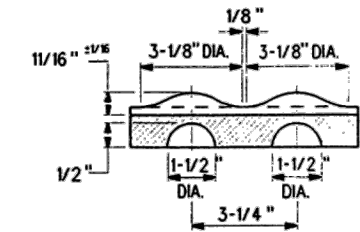
GAUGE PLATE GP-238, GP-239 & GP-244

| GAUGE PLATE DIMENSIONS | | | | | | | |
|------------------------|-----------|--------------|-----------|-----------|-------------|--------------|----|
| GAUGE PLATES | A | B | C | D | E | F | G |
| GP 230 | 3'-8" | NO HOLE | NO HOLE | 3'-5 5/8" | 2'-1 9/16" | 1'-11 9/16" | 2" |
| GP 231 | 3'-8" | NO HOLE | NO HOLE | 3'-5 5/8" | 2'-2 1/4" | NO HOLE | 2" |
| GP 238 | 7'-1 1/4" | 6'-10 1/4" | 6'-3 1/2" | 3'-5 7/8" | 2'-1 9/16" | 1'-11 9/16" | 2" |
| GP 239 | 7'-2" | 6'-11 7/16" | 6'-3 1/2" | 3'-6 1/4" | 2'-2 1/4" | NO HOLE | 2" |
| GP 244 | 7'-1 1/4" | 6'-10 11/16" | 6'-3 1/2" | 3'-5 7/8" | 2'-1 11/32" | 1'-11 11/32" | 0" |

1 5/16" ±1/32 DRILL
 2" ±1/32 C'BORE x
 15/32" ±0 DEEP
 2 HOLES
 MILL SLOT, 1 3/8" ±1/32 WIDE
 x 9/32" ±1/32 DEEP
 BETWEEN HOLES

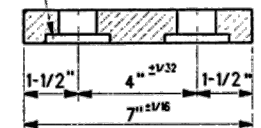


SECTION A-A

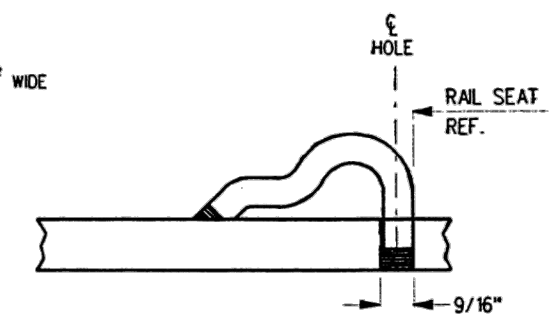


SECTION B-B
 FORMED BRACE STOPS

1-1/32" ±1/32 SQ. PUNCH
 2-5/16" DIA. C'BORE
 x 1/4" DEEP
 2 HOLES



SECTION C-C



TYPICAL PANDROL SHOULDER
 INSTALLATION

NOTES

- IDENTIFICATION CHARACTERS (3/4" MINIMUM HEIGHT) TO BE STAMPED ON EACH PLATE AS SHOWN.
- 1/4"x2"x5 1/2" SPECIAL PAD TO BE WELDED 3 SIDES- 1/4" FILLET OR TWO 3 1/8" DIA. BOSSES 1/2" DEEP AND SPREAD 3 1/4" APART SYMMETRICAL ABOUT SECTION B-B.
- INSULATION BOLT HOLES MUST HAVE BURRS REMOVED.
- ALL HOLES TO BE PUNCHED OR DRILLED. THE USE OF ACETYLENE TORCH OR OTHER BURNING METHOD FOR THE MAKING OF HOLES OR CUTTING IN THE MANUFACTURE OF GAUGE PLATES IS ABSOLUTELY PROHIBITED.
- WHEN REFERRING TO GAUGE PLATE HALVES, PLAN AND PLATE NUMBER MUST BE STATED TO INDICATE SPECIFIC PLATE REQUIRED.
- FOR ASSEMBLY OF GAUGE PLATES, SEE PLAN GTS-0680
- THE ADJOINING ENDS OF ALL GAUGE PLATE HALVES TO BE PAINTED WITH INSULATING PAINT AS

MATERIAL

PLATES TO CONFORM TO THE LATEST REVISION OF GO TRANSIT TRACK STANDARDS OR IN GENERAL WITH LATEST REVISION OF A.S.T.M. SPECIFICATION FOR COMMERCIAL QUALITY HOT ROLLED BAR STEEL A-675 CHEMICAL REQUIREMENT.

| | MINIMUM | MAXIMUM |
|------------|---------|---------|
| CARBON | 0.15 % | 0.25 % |
| MANGANESE | 0.30 % | 0.60 % |
| PHOSPHORUS | | 0.04 % |
| SULPHUR | | 0.05 % |

| | | | |
|-------------------|----------|---|---|
| 0 | 17/12/15 | REVISED PDF VERSION ESTABLISHED | |
| No. | Date | Revision | By Approved |
| Standard | | INSULATED GAUGE PLATES (HALVES) FOR LEFT HAND LAP TURNOUTS 136 LB. RAILS | |
| Drawn | MG | Checked | GGG Approved <i>KBL</i> VP Corridor Infrastructure |
| Date | | Plan Number | Rev |
| DEC 15, 2017 | | GTS-0695 | 0 |
| REFERENCE: TS-695 | | Sheet 2 OF 2 | |

