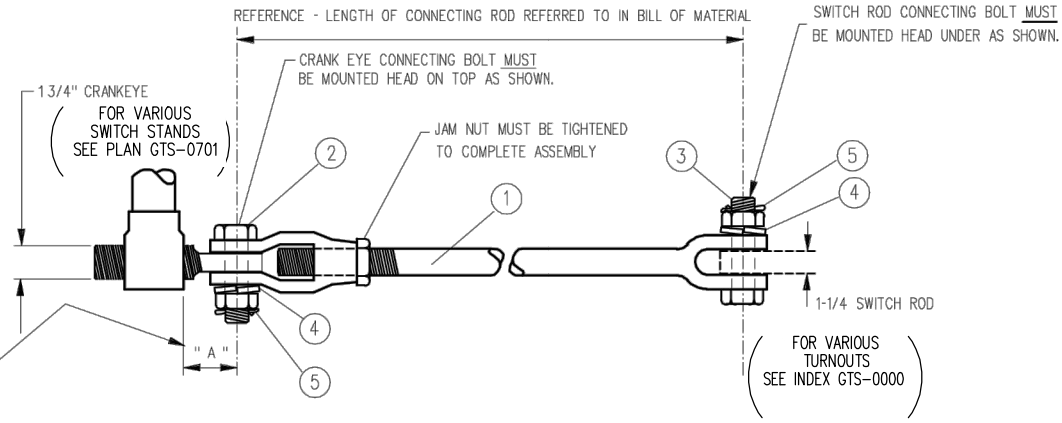
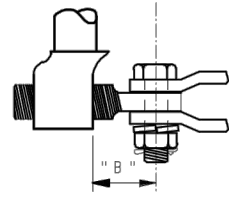


IMPORTANT THIS ARRANGEMENT IS THE OLD STYLE "RACOR" OFFSET SPINDLE (1-1/2" DIA. CRANKEY) WHICH USE IS ONLY ALLOWED ON SPRING LOADED SWITCH STANDS 20B AND 17B.

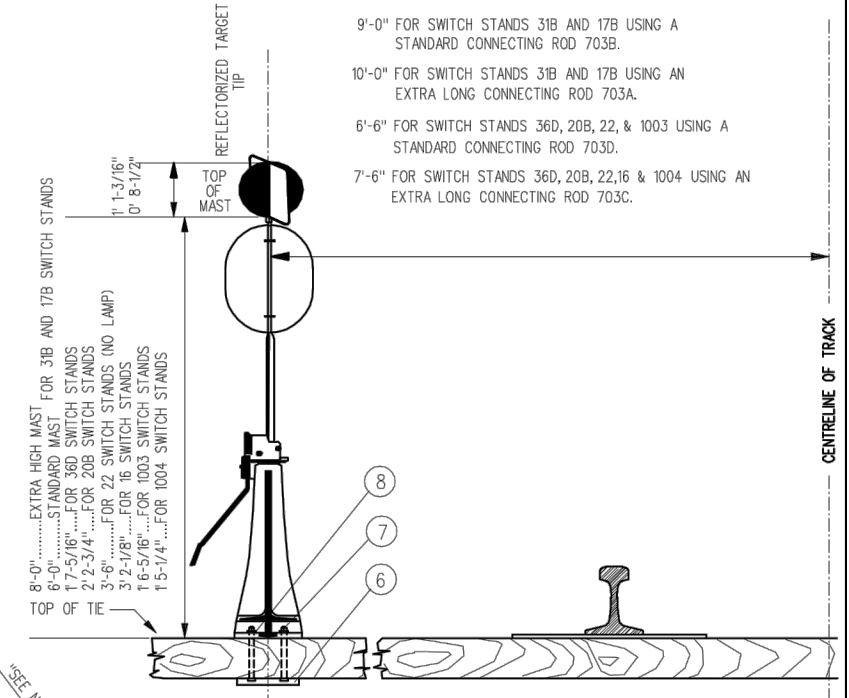


TYPICAL ASS'Y - CONNECTING ROD

CRANK ADJUSTMENTS FOR SWITCH STANDS WITH OFFSET SPINDLE	
THROW OF SWITCH	" B "
4- 1/2"	2- 9/16"
4- 5/8"	2- 11/16"
4- 3/4"	2- 3/4"
4- 7/8"	2- 13/16"
5"	2- 15/16"

CRANK ADJUSTMENTS FOR SWITCH STANDS WITH SYMMETRICAL SPINDLE			
THROW OF SWITCH	" A "	THROW OF SWITCH	" A "
4- 1/2"	2- 1/16"	5"	2- 7/16"
4- 5/8"	2- 3/16"	5- 1/8"	2- 1/2"
4- 3/4"	2- 1/4"	5- 1/4"	2- 5/8"
4- 7/8"	2- 5/16"	5- 3/8"	2- 11/16"
5"	2- 7/16"	5- 1/2"	2- 13/16"

STOCK NUMBERS	ITEM NO.	DESCRIPTION	STANDARD PLAN NO.	QUANTITY/ SWITCH STAND TYPE									
				31B	17 B	36 D	20 B	22	16	1003	1004		
	1	CONNECTING ROD C/W CLEVIS AND JAM NUT 6'-4-1/2" LONG	GTS-0703A	(A)	(A)								
	1	CONNECTING ROD C/W CLEVIS AND JAM NUT 5'-4-1/2" LONG	GTS-0703B	1	1								
	1	CONNECTING ROD C/W CLEVIS AND JAM NUT 3'-10-1/2" LONG	GTS-0703C			(B)	(B)	(B)	(B)	(B)	(B)	(B)	
	1	CONNECTING ROD C/W CLEVIS AND JAM NUT 2'-10-1/2" LONG	GTS-0703D										
	1	TEMPORARY CONNECTING ROD 6'-8" LONG	GTS-0703E	(C)		(C)	(C)	(C)	(C)	(C)	(C)	(C)	
	2	1-1/8" DIA. - 7 UNC HEX HD BOLT X 4-1/2" LONG C/W HEX NUT	GTS-1311/1	1	1	1	1	1	1	1	1	1	1
	3	1-1/8" DIA. - 7 UNC HEX HD BOLT X 5" LONG C/W HEX NUT	GTS-1311/2	1	1	1	1	1	1	1	1	1	1
	4	SPRING WASHER FOR 1-1/8" DIA. BOLT	GTS-1301	2	2	2	2	2	2	2	2	2	2
	5	1/4" COTTER PIN X 2" LONG		2	2	2	2	2	2	2	2	2	2
	6	LOCKING ANGLE	GTS-0708	2	2	2	2	2	2	2	2	2	2
	7	3/4" DIA. - UNC SQ.HD. BOLT X 10-1/2" LONG C/W SQ NUT	GTS-1309/4	4	4	4	4	4	4	4	4	4	4
	8	SPRING WASHER FOR 3/4" DIA. BOLT	GTS-1301	4	4	4	4	4	4	4	4	4	4



SWITCH STAND HEIGHTS & CLEARANCES

MECHANICAL SWITCHMAN INSTALLATION

- TO INSTALL THE MECHANICAL SWITCHMAN, ATTACH IT TO THE SWITCH STAND AND SWITCH HEAD ROD IN THE SAME MANNER AS A STANDARD CONNECTING ROD.
- BOLT SWITCH STAND TO TIE, PLACE HANDLE ALSO SWITCH POINT IN A HALF THROWN POSITION, BOLT SWITCHMAN IN PLACE. IN THIS MANNER THE SPRING PRESSURE WILL BE EQUAL ON THE SWITCH POINTS REGARDLESS OF WHICH POSITION THEY ARE IN.
- THE THROW AT THE HEAD ROD SHOULD NOT EXCEED 4-3/4" AND OF THE SWITCH STAND 5-1/4". THIS PROVIDES AT LEAST 1/4" ADDITIONAL COMPRESSION TO HOLD SWITCH POINTS FIRMLY AGAINST STOCK RAIL.
- TO FURTHER INCREASE SPRING PRESSURE ON EITHER SWITCH POINT, TURN PISTON ROD "IN OR OUT" OF THE SWITCH STAND CONNECTION DEPENDING UPON WHICH SIDE THE EXTRA PRESSURE IS REQUIRED.

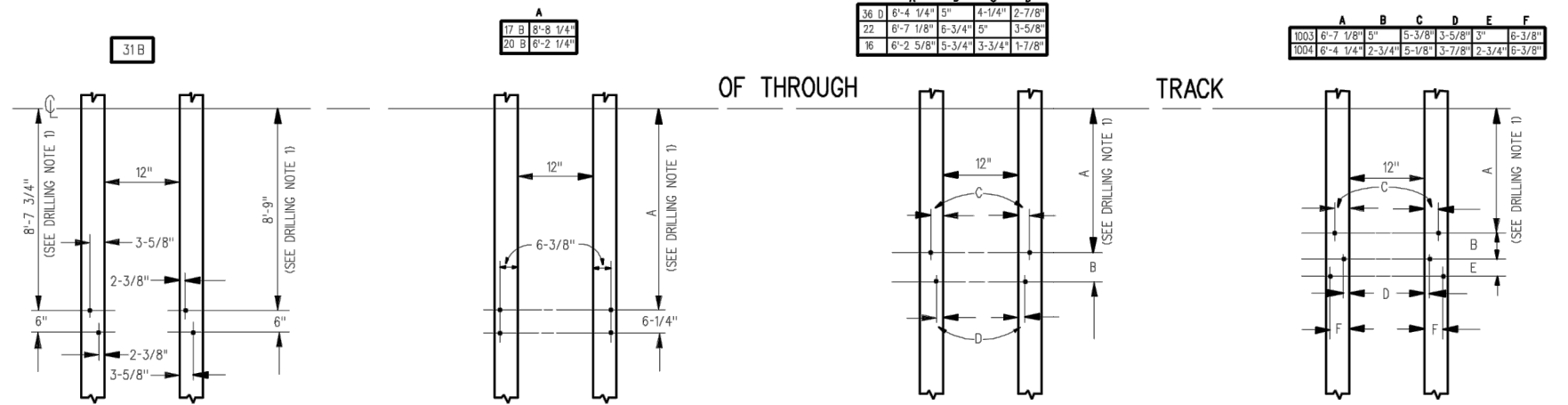
TIE DRILLING NOTES:

- HOLE LOCATION DIMENSIONS SHOWN ARE FOR A NORMAL LENGTH CONNECTING ROD (703B & 703D). SHOULD AN EXTRA LONG ROD (703A & 703C) BE REQUIRED, ADD ONE FOOT TO THE DIMENSION.
- ALL HOLES ARE TO BE DRILLED 7/8" DIA. FOR TIGHT FIT TO HOLD BOLTS IN POSITION DURING STAND INSTALLATION.
- SPRING SWITCH INSTALLATIONS ARE SPECIAL, IN THAT THE TIE MUST BE DRILLED TO SUIT STANDARD LENGTH ROD FOR 31B STAND AND EXTRA LONG ROD FOR 36D STAND.

- (A) AS AN ALTERNATIVE IN CERTAIN INSTALLATIONS A 703A ROD MAY BE INSTALLED IN LIEU OF A 703B CONNECTING ROD. THIS ALLOWS MOUNTING STAND FARTHER FROM THE Q OF TRACK TO FACILITATE THE VIEW AS PER SPC 3506 (4D).
- (B) AS AN ALTERNATIVE IN CERTAIN INSTALLATIONS A 703C ROD MAY BE INSTALLED IN LIEU OF A 703D CONNECTING ROD. THIS ALLOWS MOUNTING STAND FARTHER FROM THE Q OF TRACK TO FACILITATE THE VIEW AS PER SPC 3506 (4D).
- (A) (B) UNLESS EXTRA LONG CONNECTING ROD NOT SPECIFICALLY REQUESTED STANDARD CONNECTING ROD (LENGTHS 5' 4-1/2" OR 2' 10-1/2") WILL BE SUPPLIED WITH MATERIALS LISTED TO SUIT SWITCH STAND MENTIONED.
- (C) FOR TEMPORARY USE, A SPECIAL CONNECTING ROD IS AVAILABLE TO ALLOW SWITCHING TURNOUT WHILE IN THE STAGE OF POWER OPERATED MACHINE INSTALLATION.

REMARKS:

- THE INSTALLATION OF SWITCH STAND, CONNECTING ROD OR MECHANICAL SWITCHMAN TO BE IN ACCORDANCE WITH THIS PLAN AND LATEST ISSUE OF SPC 3500 & 3502 DEALING WITH TURNOUTS.
- FOR VARIOUS SWITCH STANDS WITH CORRESPONDING LAMP AND/OR TARGET ARRANGEMENTS SEE STANDARD PLAN GTS-0701
- FOR FIELD REPLACEMENT OF CLEVIS AND JAM NUT ONLY - REFERENCE STOCK NUMBERS
- WHEN INSTALLING A SPRING OPERATED SWITCH, THE MECHANICAL SWITCHMAN WILL BE SUPPLIED BY SIGNAL DEPARTMENT.



TIE DRILLING DATA FOR SWITCH STAND MOUNTING HOLES

0	17/12/15	REVISED PDF VERSION ESTABLISHED	
No.	Date	Revision	By Approved
MOUNTING DETAILS SWITCH STANDS BOLTING OF CONNECTING ROD & STAND			
Drawn	MG	Checked	GGG
Approved			KBLU VP Corridor Infrastructure
Date	DEC 15, 2017	Plan Number	GTS-0702
Rev	0		
REFERENCE: TS-702		Sheet 1 OF 1	

