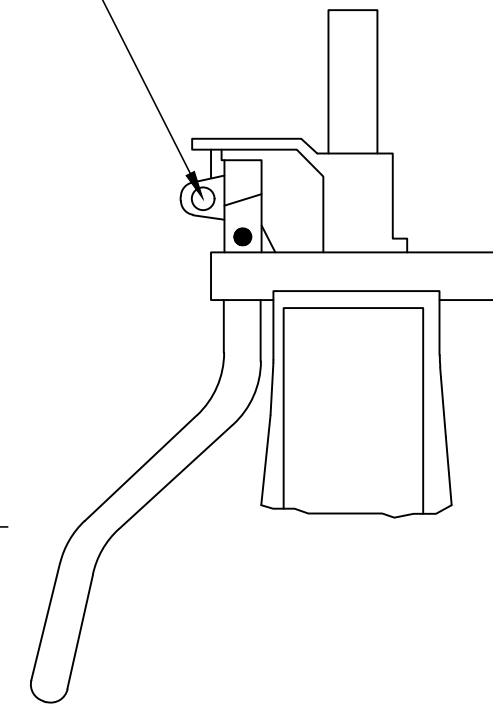
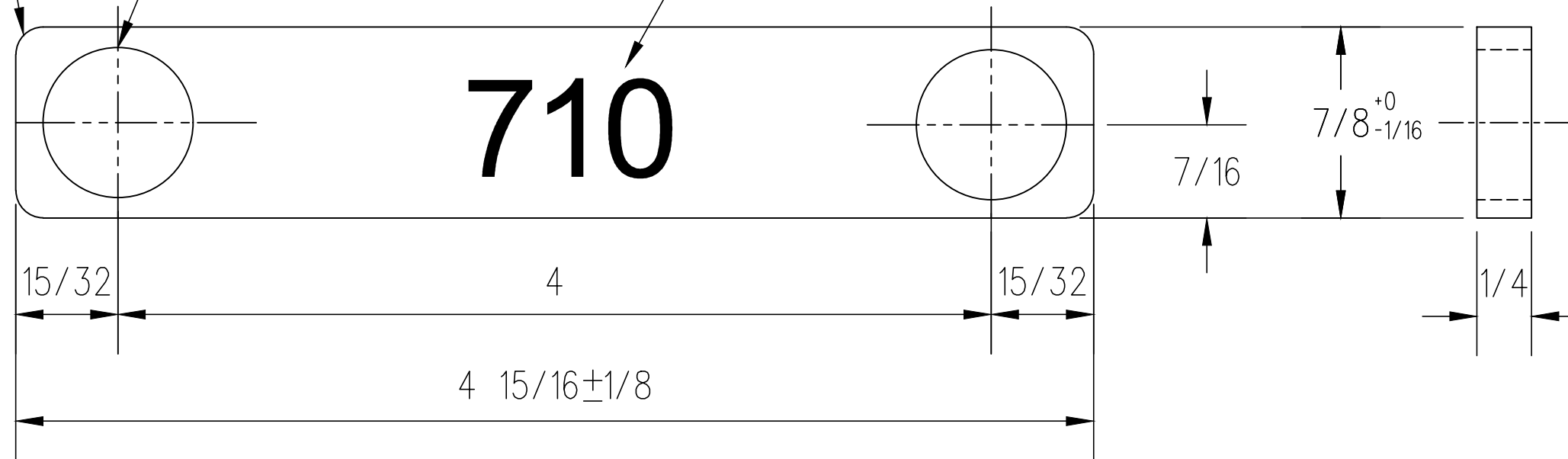


GRIND ALL CORNERS TO APPROXIMATELY 1/8 RADIUS

11/16 DRILL-2 HOLES

MARK NO. 710 MIN. HEIGHT TO BE STAMP CLEARLY AS SHOWN



THIS HOLE TO BE REAMED OR REDRILLED TO 1 DIA.



NOTES

- ALL DIMENSIONS ARE IN INCHES
- STOCK NUMBER 01-29-201
- MATERIAL TO CONFORM WITH LATEST REVISION OF CNR SPECIFICATION 150-1 CLASS C, OR IN GENERAL WITH THE LATEST REVISION OF ASTM SPECIFICATION FOR COMMERCIAL QUALITY HOT ROLLED BAR STEEL A107.

SWITCH STAND ALTERATION

0	17/12/15	REVISED PDF VERSION ESTABLISHED	
No.	Date	Revision	By Approved
Standard		SWITCH STAND - LOCKING STRAP	
		JOINT (DUAL COMPANY) OPERATIONS	
Drawn	MG	Checked	GGS
		Approved	<i>MBL</i> VP Corridor Infrastructure
			
Date	DEC 15, 2017	Plan Number	GTS-0710
			Rev 0
REFERENCE: TS-710			Sheet 1 OF 1