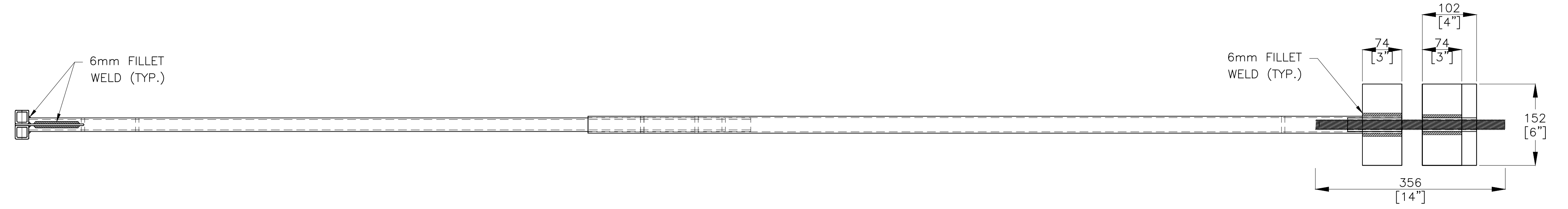
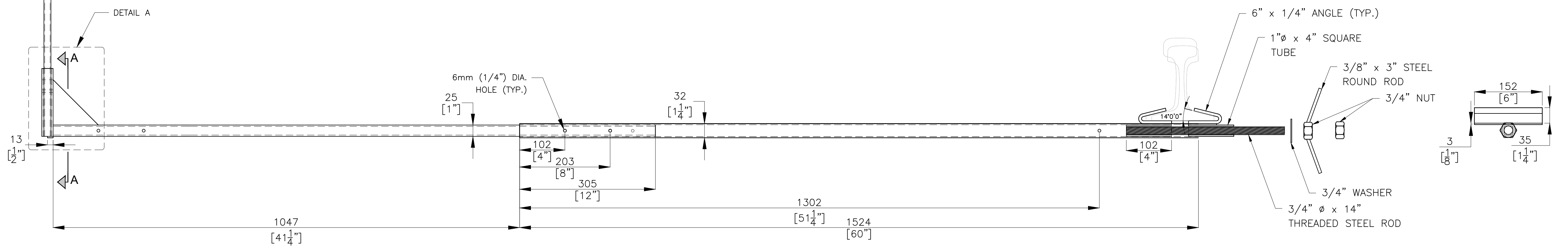
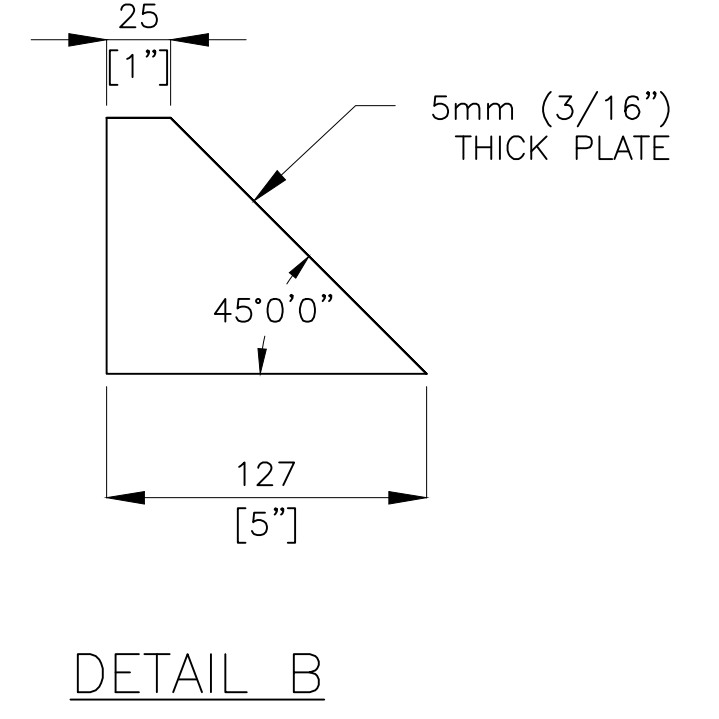
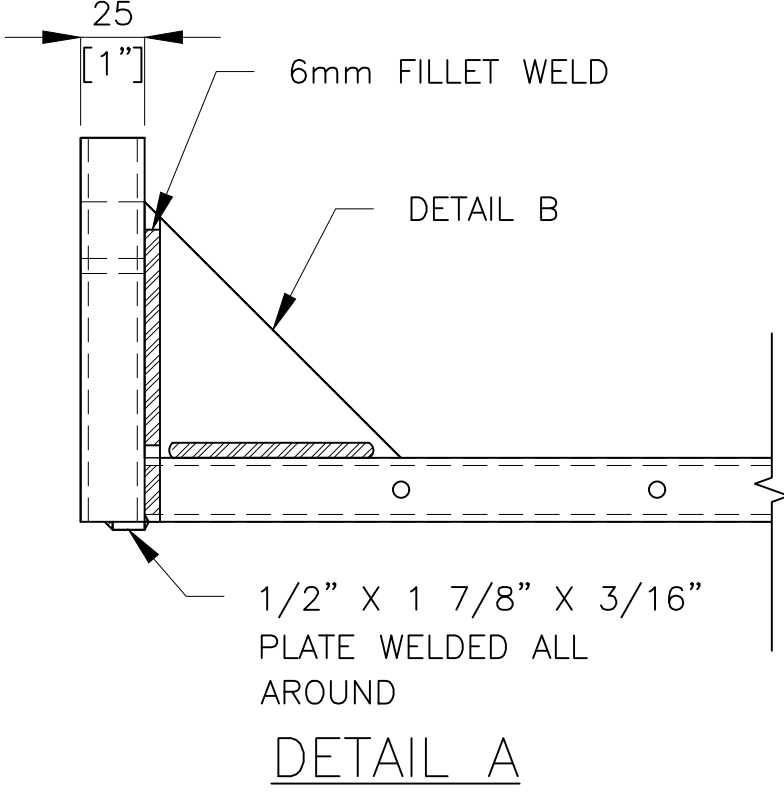
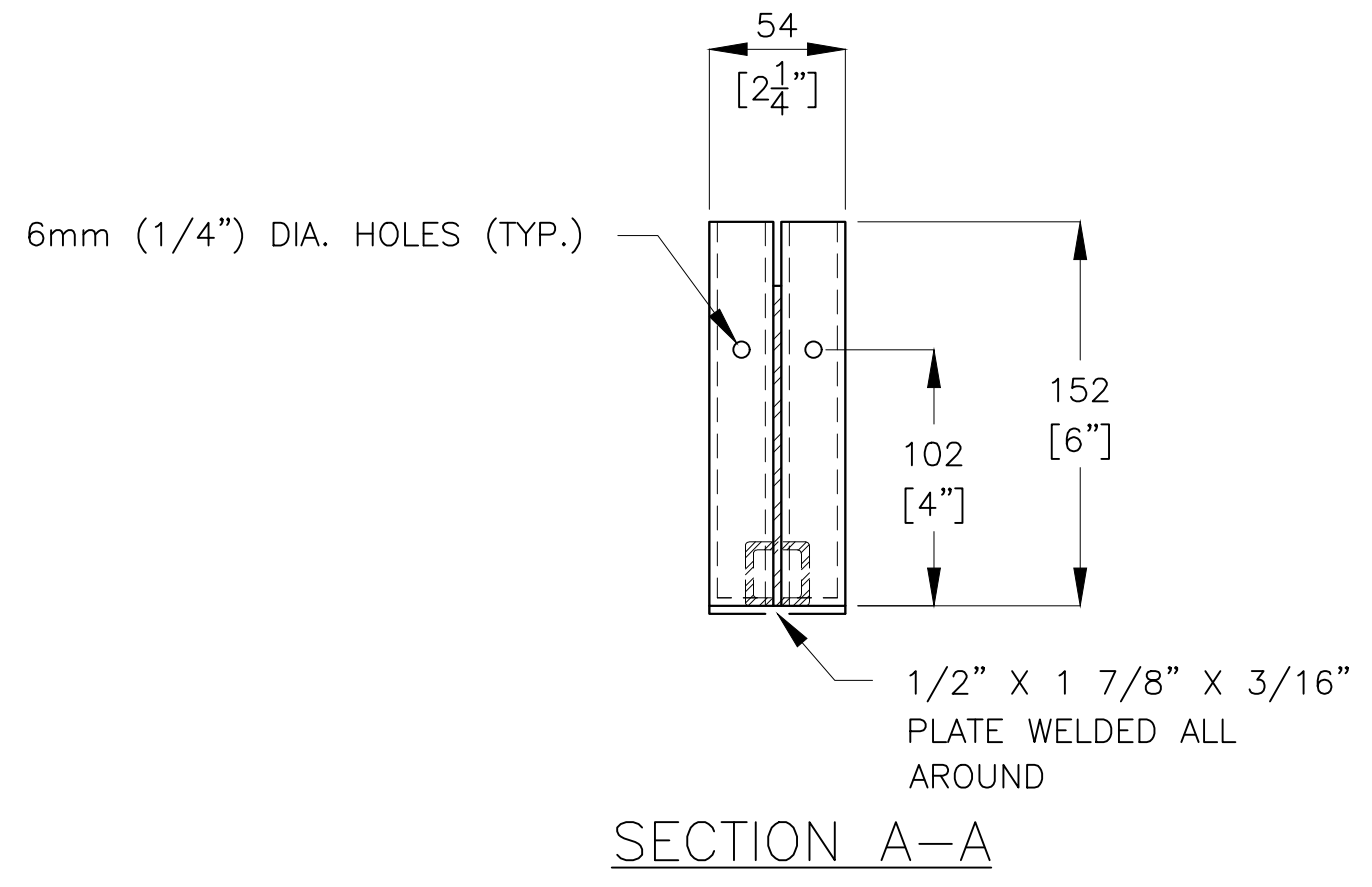
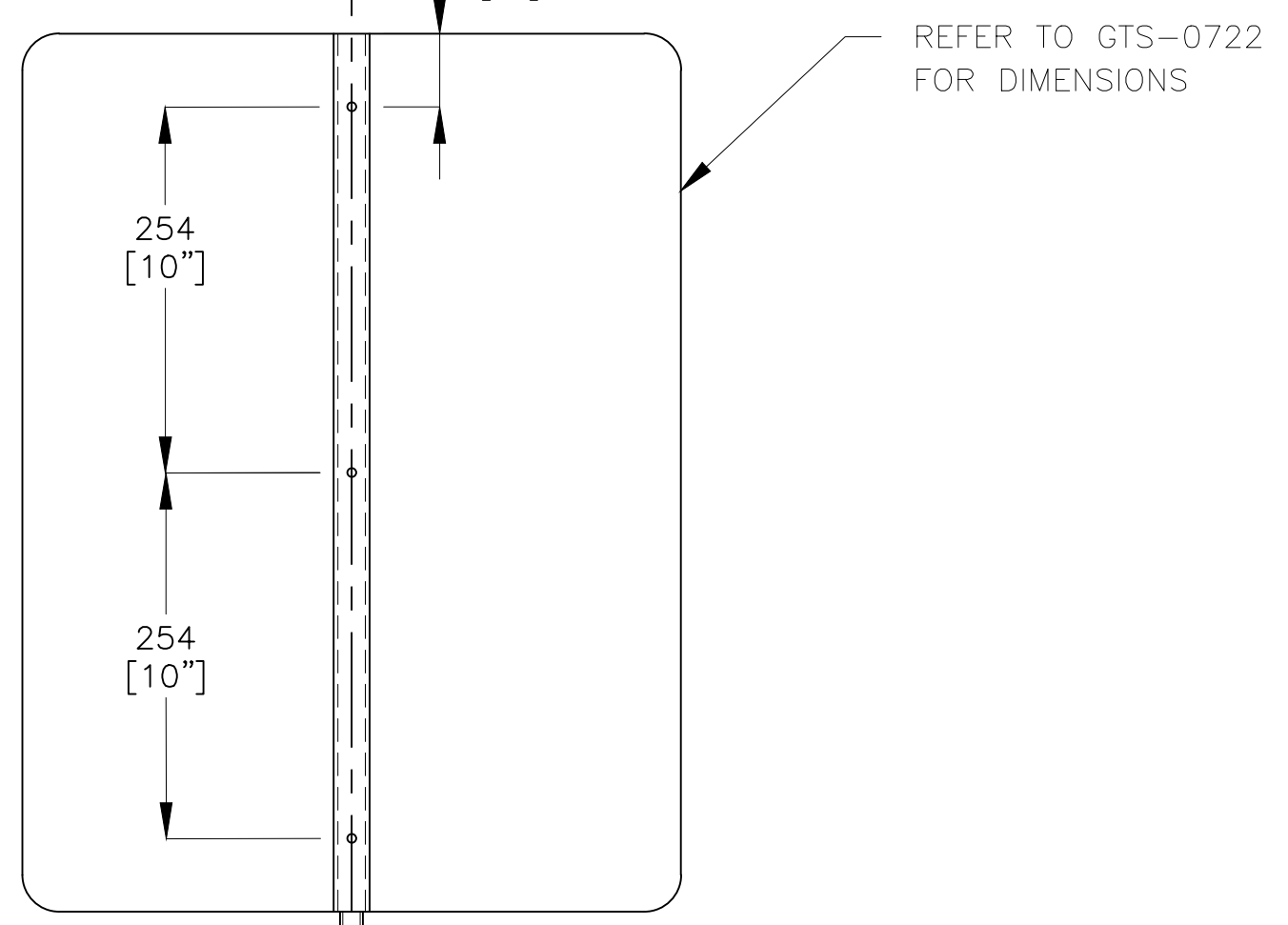


BILL OF MATERIAL			
QTY	GRADE	DESCRIPTION	LENGTH
1	SQ.TUBE	1" X 1" X 0.10	53 1/4"
2	SQ.TUBE	1" X 1" X 0.10	6"
1	SQ.TUBE	1" X 1" X 0.10	4"
1	SQ.TUBE	1" X 1" X 0.10	4"
1	SQ.TUBE	1 1/4" X 1 1/4" X 0.10	57 5/8"
1	GUSSET	3/16" X 4"	4"
1	FLAT BAR	3/16" X 1/2"	1 7/8"
2	FORMED ANGLE	2 7/8" X 2 7/8" X 1/4"(14 DEGREE)	6"
2	H.R.ROUND	3/8"	3"
2	S.S. BOLT	HEX HEAD CAP SCREW 1/4"	1 3/4"
2	S.S. BOLT	HEX HEAD CAP SCREW 1/4"	1 1/2"
3	S.S. NYLON LOCK NUT	1/4"	
1	THREADED ROD	3/4" - 10 UNC FULL THREAD ROD ZINC PLATED	14"
1	N.C. NUT	3/4" - 10 HEAVY HEX NUT A192 2H (BARE)	
1	FLAT WASHER	3/4" - B.S. USS FLAT WASHER ZINC PLATED	
1	NUT	3/4" - 10 UNC STOVER LOCK NUTS ZINC PLATED (MECHANICAL NUT)	

- MATERIAL NOTES:**
1. STEEL SHALL BE IN ACCORDANCE TO ASTM A53 / A53M - 20 STANDARD SPECIFICATION FOR PIPE, STEEL, BLACK AND HOT-DIPPED, ZINC-COATED, WELDED AND SEAMLESS.
 2. WELDING SHALL BE IN ACCORDANCE WITH W59-03 (R2008) WELDED STEEL CONSTRUCTION.
 3. ALL FASTENERS SHALL BE HOT-DIP GALVANIZED.
 4. ALL EXPOSED SURFACES OF THE POST AND PLATES SHALL BE PAINTED AS PER MANUFACTURER'S RECOMMENDATIONS.
 5. SYSTEM ASSEMBLY AND INSTALLATION SHALL BE IN ACCORDANCE TO MANUFACTURER'S SPECIFICATIONS.



METRIC CONVERSION: 1 inch=25.4mm, 1 foot=304.8mm

0	22/08/30	INITIAL VERSION ESTABLISHED	
No.	Date	Revision	By Approved

Standard / **CROR 842/843 FLAG STAND DETAILS**

Drawn: SJ Checked: TM Approved: *Jay P. Thomas* Chief Engineer

Date: AUG 30/2022 Plan Number: GTS-0725 Rev: 0

REFERENCE: - Sheet 1 OF 2