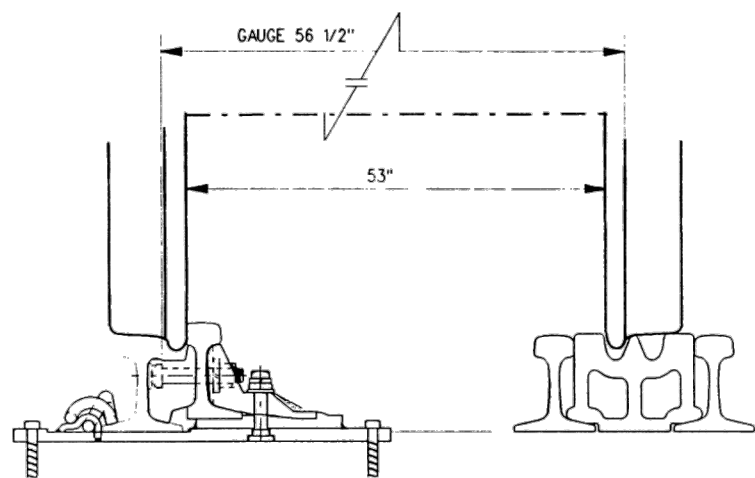
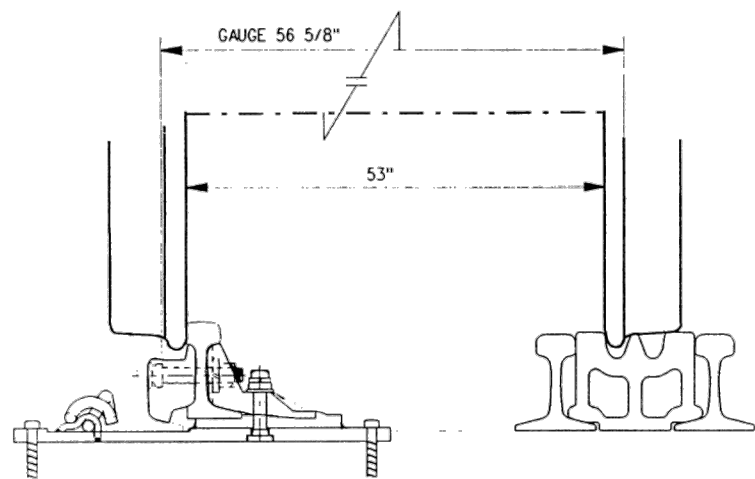


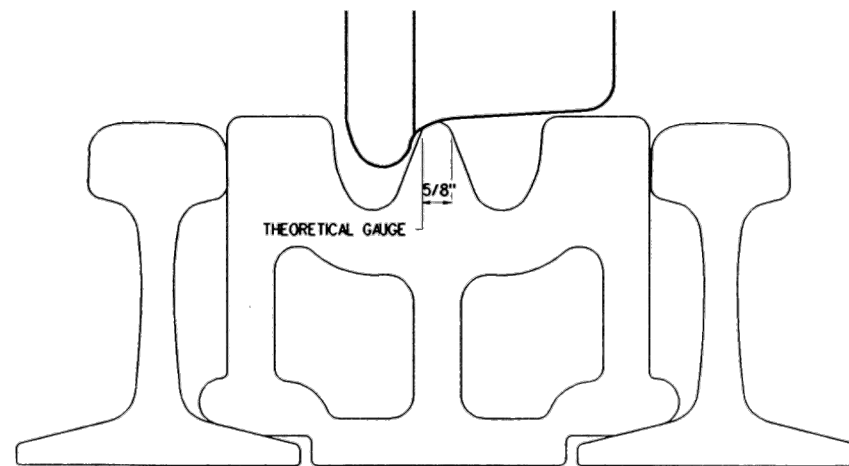
MINIMUM BACK TO BACK DISTANCE OF WHEEL SETS-GAUGE 1/8" NARROW



MINIMUM BACK TO BACK DISTANCE OF WHEEL SETS-GAUGE EXACT

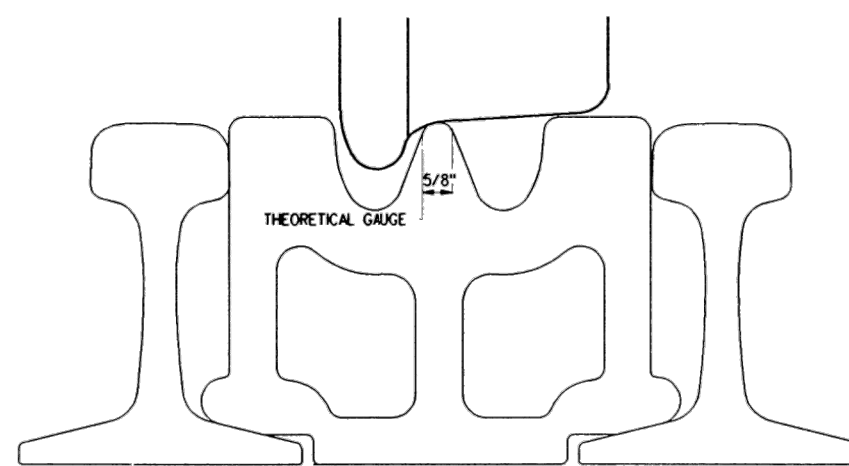


MINIMUM BACK TO BACK DISTANCE OF WHEEL SETS-GAUGE 1/8" WIDE



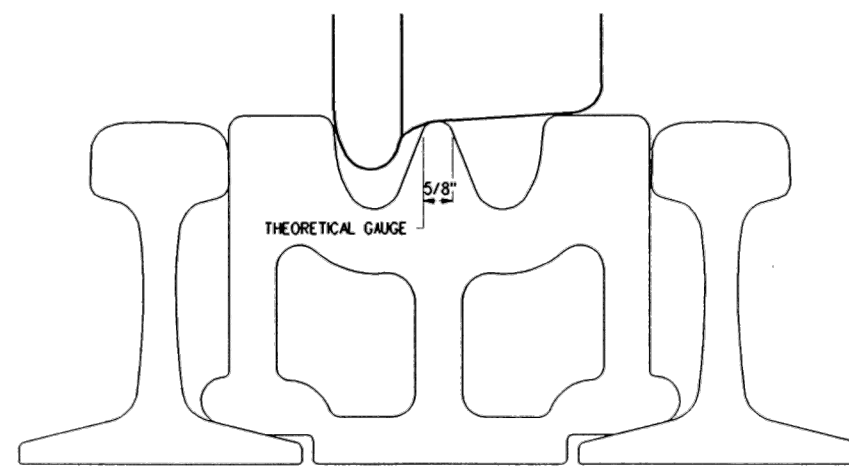
THEORETICAL GAUGE

5/8"



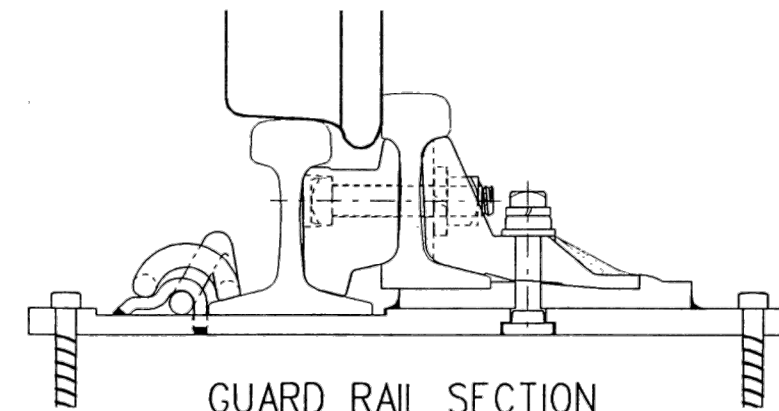
THEORETICAL GAUGE

5/8"

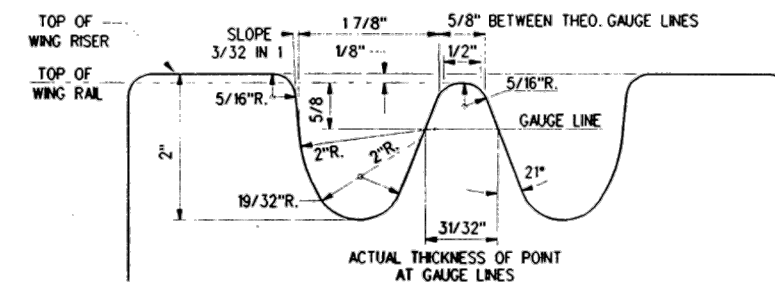


THEORETICAL GAUGE

5/8"



GUARD RAIL SECTION



TYPICAL SECTION OF HEAVY POINT R.B.M. FROG AT 5/8" POINT OF FROG

NOTES:

- FOR 36" DIAMETER HEUMANN TREAD AND FLANGE CONTOURS SEE JOINT CN/CP DRAWING NO. 4E-JF-35-J.
- FOR MINIMUM AND MAXIMUM BACK TO BACK WHEEL SET DIMENSIONS SEE CN EQUIPMENT DEPT. DRAWING NO. 6653-13-A.

METRIC CONVERSION: 1 inch=25.4mm, 1 foot=304.8mm

No.	Date	Revision	By	Approved
1	18/07/27	ADDED IMPERIAL TO METRIC CONVERSION NOTE		

Standard / INTERACTION
36" DIA. HEUMANN WHEEL / FROG
 FOR 136 LB. R.E. RAILS

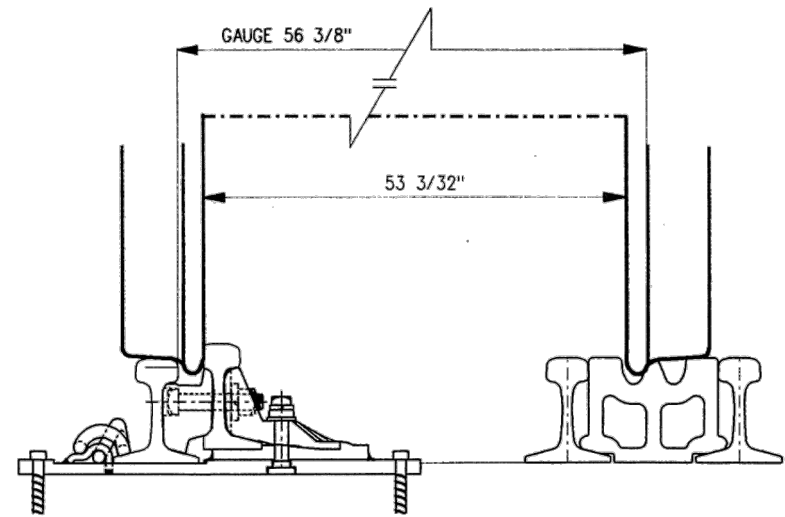
Drawn MG Checked GGS Approved *[Signature]*
 VP Engineering & Asset Management



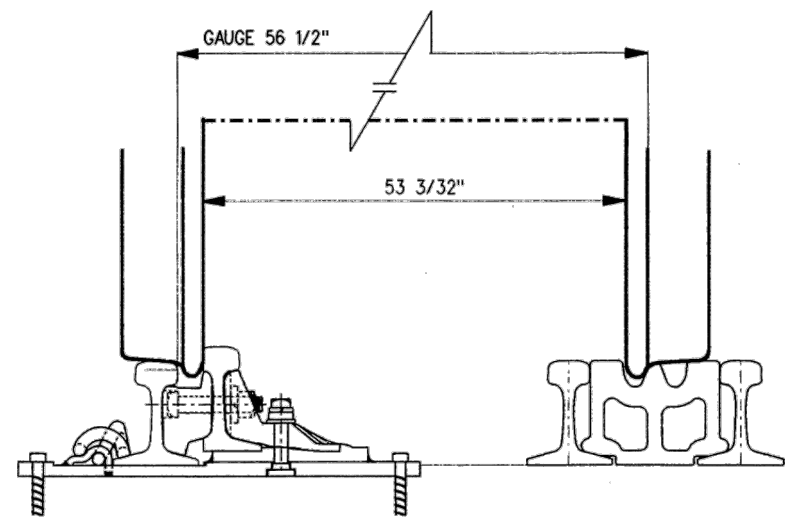
METROLINX

Date DEC 15, 2017 Plan Number GTS-0852 Rev 1

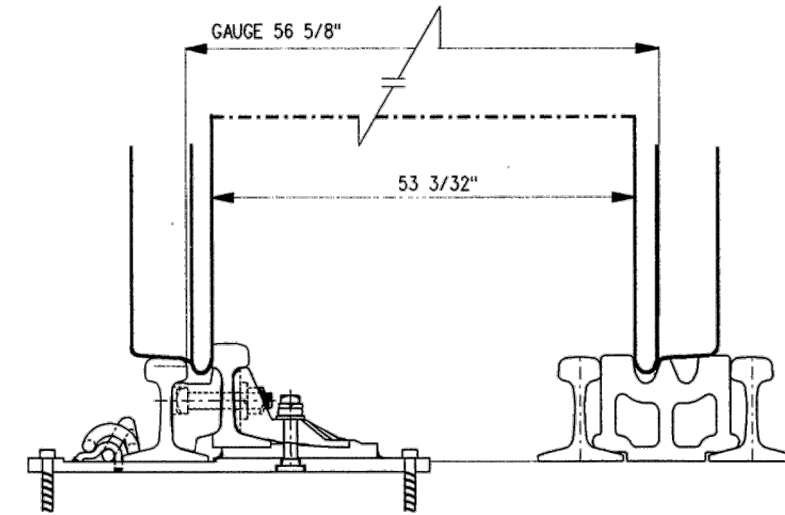
REFERENCE: TS-852 Sheet 1 OF 2



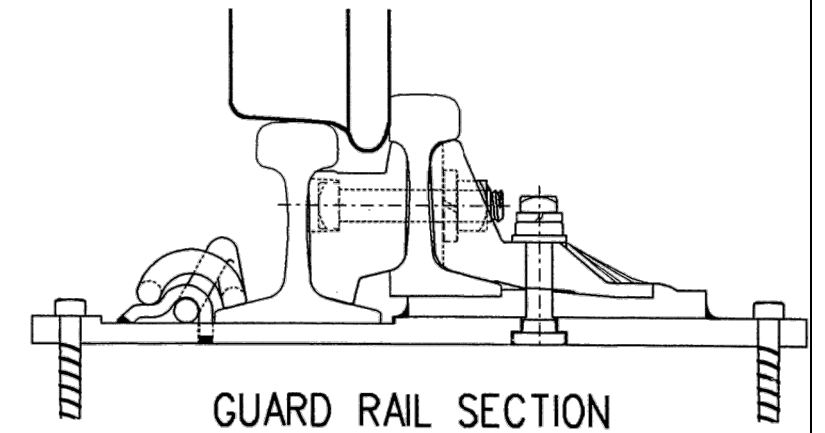
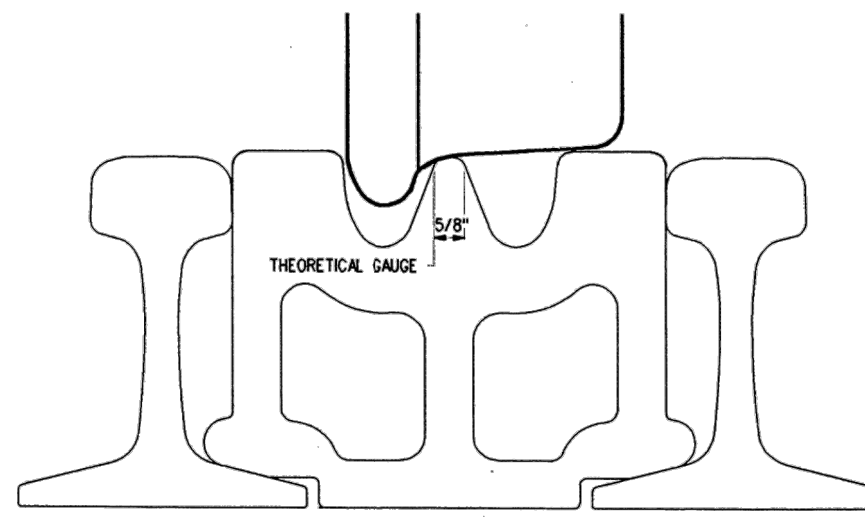
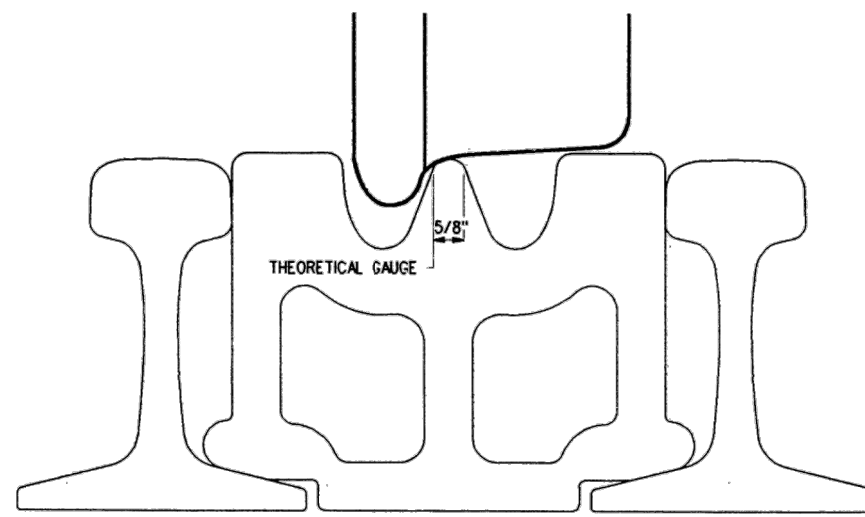
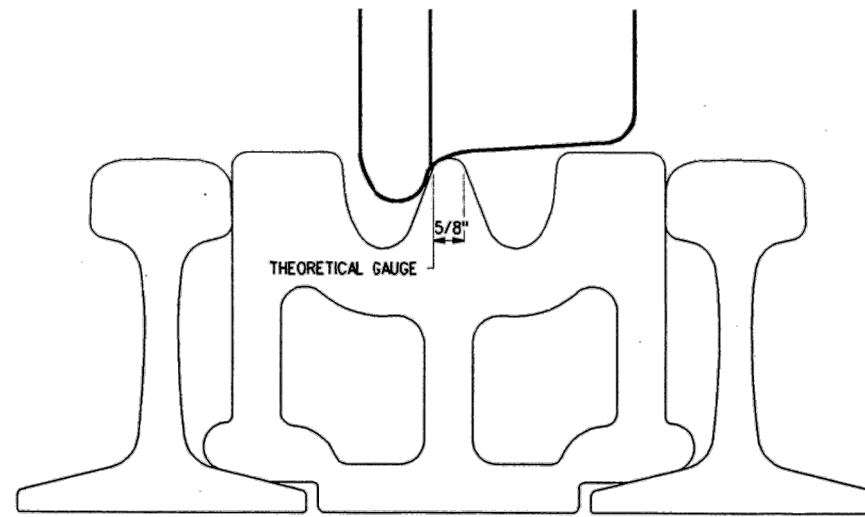
MAXIMUM BACK TO BACK DISTANCE OF WHEEL SETS-GAUGE 1/8" NARROW



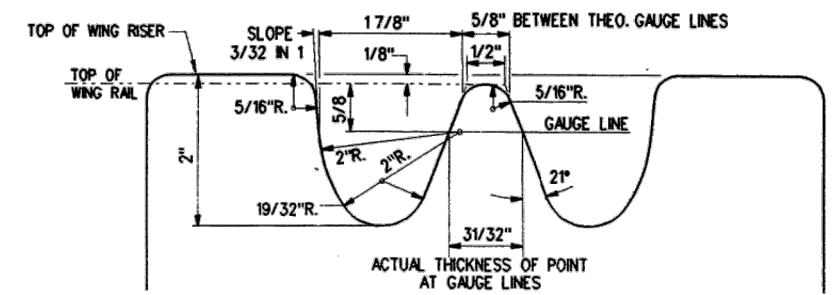
MAXIMUM BACK TO BACK DISTANCE OF WHEEL SETS-GAUGE EXACT



MAXIMUM BACK TO BACK DISTANCE OF WHEEL SETS-GAUGE 1/8" WIDE



GUARD RAIL SECTION



TYPICAL SECTION OF HEAVY POINT R.B.M. FROG AT 5/8" POINT OF FROG

NOTES:

- FOR 36" DIAMETER HEUMANN TREAD AND FLANGE CONTOURS SEE JOINT CN/CP DRAWING NO. 4E-JF-35-J.
- FOR MINIMUM AND MAXIMUM BACK TO BACK WHEEL SET DIMENSIONS SEE CN EQUIPMENT DEPT. DRAWING NO. 6653-13-A.

METRIC CONVERSION: 1 inch=25.4mm, 1 foot=304.8mm

No.	Date	Revision	By	Approved
1	18/07/27	ADDED IMPERIAL TO METRIC CONVERSION NOTE		

Standard / INTERACTION
36" DIA. HEUMANN WHEEL / FROG
 FOR 136 LB. R.E. RAILS

Drawn MG Checked GGS Approved *[Signature]*
 VP Engineering & Asset Management



METROLINX

Date DEC 15, 2017 Plan Number GTS-0852 Rev 1

REFERENCE: TS-852 Sheet 2 OF 2