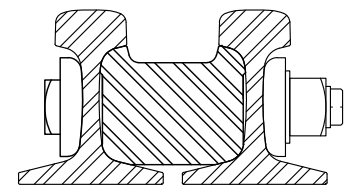
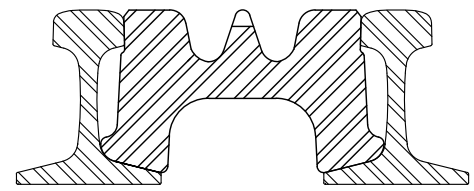


FROG USE	TOE LENGTH	HEEL LENGTH	OVERALL LENGTH	TOE SPREAD	HEEL SPREAD
TURNOUT	10'-2"	13'-10"	24'-0"	11 <sup>11</sup> / <sub>16</sub> "	17 <sup>1</sup> / <sub>16</sub> "
MAINTENANCE	13'-10"	17'-6"	31'-4"	16 <sup>3</sup> / <sub>32</sub> "	21 <sup>19</sup> / <sub>32</sub> "

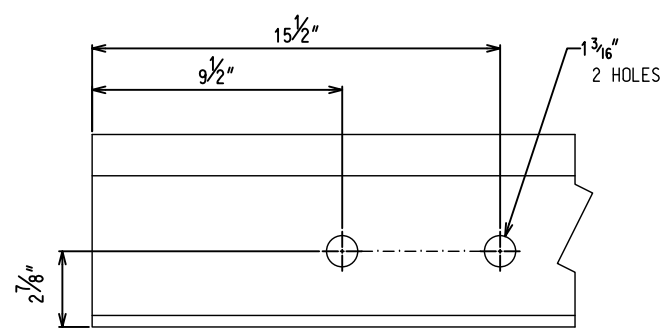
- NOTES:
1. RUNNING SURFACES OF INSERT TO BE EXPLOSIVE DEPTH HARDENED AS PER GO SPEC. 12-9 (LATEST REVISION).
  2. FROGS ARE TO BE MANUFACTURED IN ACCORDANCE WITH ALL REQUIREMENTS OF GO SPEC. 12-9 (LATEST REVISION).
  3. FROG TO BE MANUFACTURED WITHIN TOLERANCES SPECIFIED ON GO TOLERANCE PLAN GO-21.
  4. FROG TO BE MADE TO AREMA STANDARD PLAN 623 EXCEPT AS SPECIFIED ON THIS STANDARD.
  5. SEE GTS-0899 FOR FROG HEAVY POINT DETAILS.



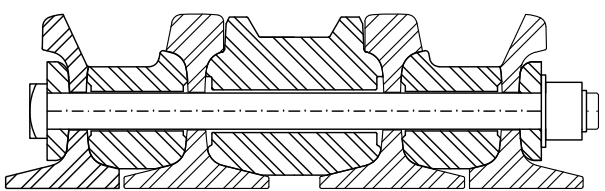
SECTION A-A



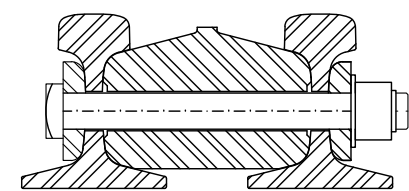
SECTION B-B



TYPICAL END DRILLING DETAILS  
(TURNOUT LENGTH FROGS ONLY)



SECTION C-C



SECTION D-D

METRIC CONVERSION: 1 inch=25.4mm, 1 foot=304.8mm

No.	Date	Revision	By Approved
1	18/07/27	ADDED IMPERIAL TO METRIC CONVERSION NOTE	

Standard / **ASSEMBLY**  
**NO. 10 LOW IMPACT HEEL RBM FROG**  
**115 LB. RE RAIL**

Drawn DPK Checked LJA Approved *[Signature]*  
VF Engineering & Asset Management



Date SEPT 15/2017 Plan Number GTS-0884 Rev 1