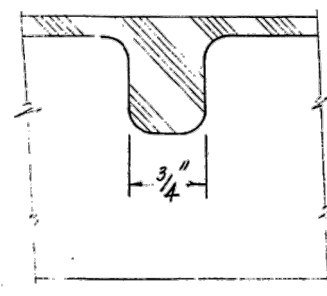
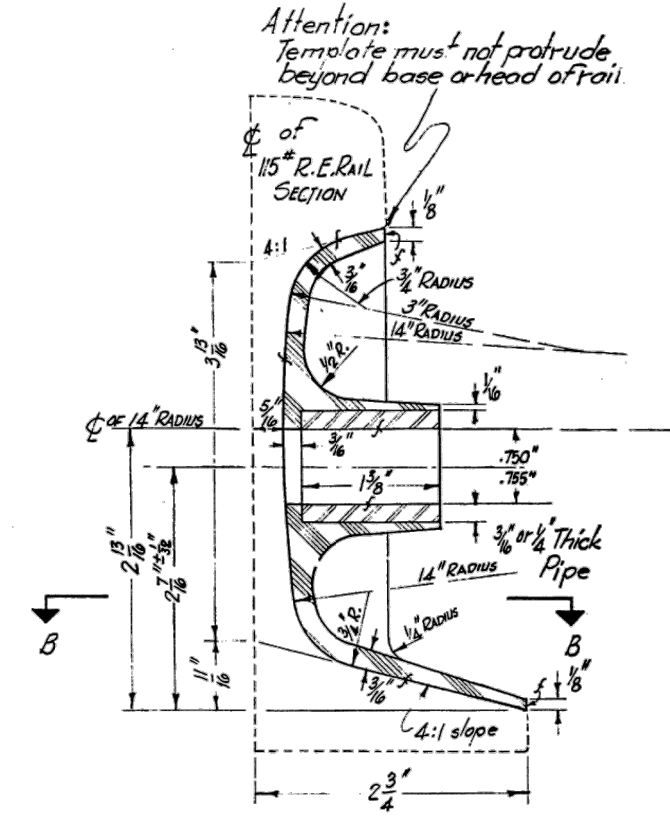


SIDEVIEW OF TEMPLATE  
SCALE - FULL SIZE  
Material: Reinforced Fiberglass Plastic  
General Purpose Polyester Resin



RIS Detail  
SECTION B-B  
SCALE - FULL SIZE



SECTION A-A  
SCALE - FULL SIZE

**General Notes:**  
f - indicates finished surfaces  
Inside thickness dimensions are minimum required.  
Template to be finished in orange colour  
For detail of centre punch see dwg. no. GTS-1104

METRIC CONVERSION: 1 inch=25.4mm, 1 foot=304.8mm

1	18/07/27	ADDED IMPERIAL TO METRIC CONVERSION NOTE	
No.	Date	Revision	By Approved
Standard		DRILLING TEMPLATE FOR 115* R.E. RAIL	
Drawn	MG	Checked	Approved GGS
		Approved <i>[Signature]</i> VP Engineering & Asset Management	



**METROLINX**

Date DEC 15, 2017 Plan Number GTS-1102 Rev 1

REFERENCE: TS-1102 Sheet 1 OF 1