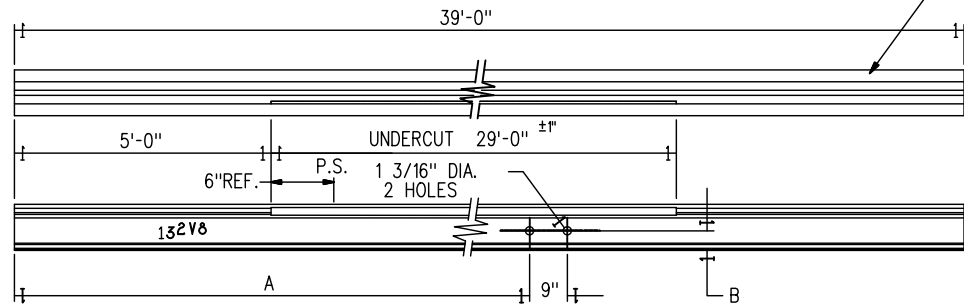


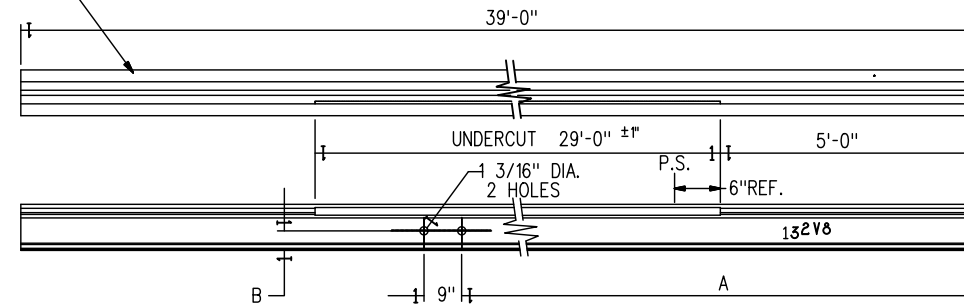
39'-0" UNDERCUT STOCK RAIL (LEFT HAND)



DRAWING NO.	DESCRIPTION	A	B
GTS-1105J	NO.10 115 LB. R.E. RAIL	28'-3 1/2"	2 7/8"
GTS-1105K	NO.10 136 LB. R.E. RAIL	28'-3 1/2"	3 9/32"
GTS-1105L	NO.12 115 LB. R.E. RAIL	32'-5 1/2"	2 7/8"
GTS-1105M	NO.12 136 LB. R.E. RAIL	32'-5 1/2"	3 9/32"

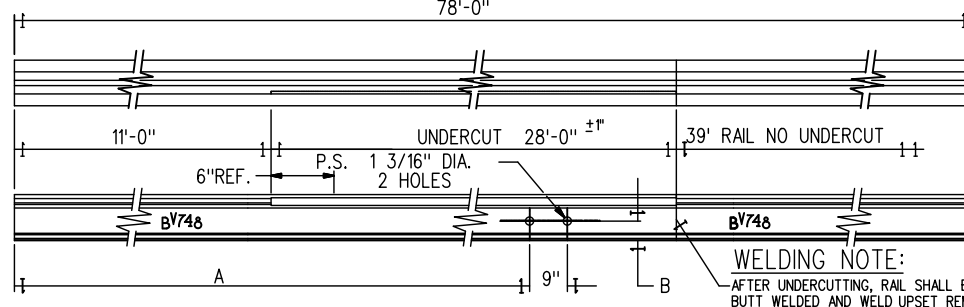
SEE NOTE 4

39'-0" UNDERCUT STOCK RAIL (RIGHT HAND)



DRAWING NO.	DESCRIPTION	A	B
GTS-1105N	NO.10 115 LB. R.E. RAIL	28'-3 1/2"	2 7/8"
GTS-1105O	NO.10 136 LB. R.E. RAIL	28'-3 1/2"	3 9/32"
GTS-1105P	NO.12 115 LB. R.E. RAIL	32'-5 1/2"	2 7/8"
GTS-1105Q	NO.12 136 LB. R.E. RAIL	32'-5 1/2"	3 9/32"

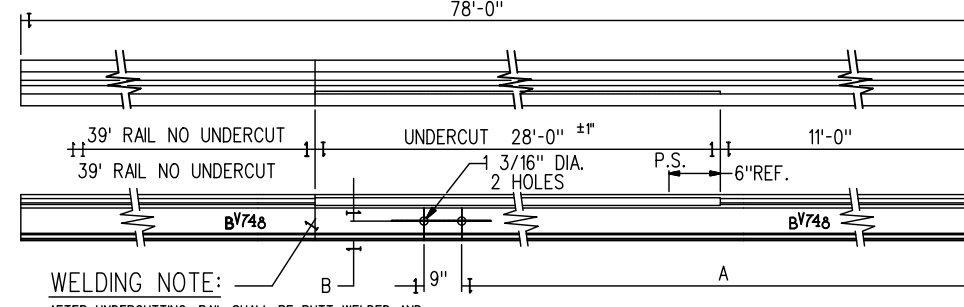
78'-0" UNDERCUT STOCK RAIL (LEFT HAND)



DRAWING NO.	DESCRIPTION	A	B
GTS-1105R	NO.16 136 LB. R.E. RAIL	37'-6 1/2"	3 9/32"
GTS-1105S	NO.20L 136 LB. R.E. RAIL	50'-1 1/2"	3 9/32"

WELDING NOTE:
AFTER UNDERCUTTING, RAIL SHALL BE BUTT WELDED AND WELD UPSET REMOVED.

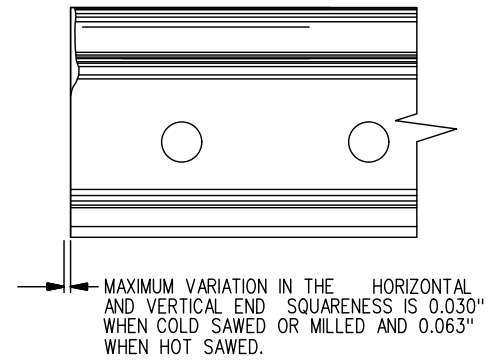
78'-0" UNDERCUT STOCK RAIL (RIGHT HAND)



DRAWING NO.	DESCRIPTION	A	B
GTS-1105T	NO.16 136 LB. R.E. RAIL	37'-6 1/2"	3 9/32"
GTS-1105U	NO.20L 136 LB. R.E. RAIL	50'-1 1/2"	3 9/32"

WELDING NOTE:
AFTER UNDERCUTTING, RAIL SHALL BE BUTT WELDED AND WELD UPSET REMOVED.

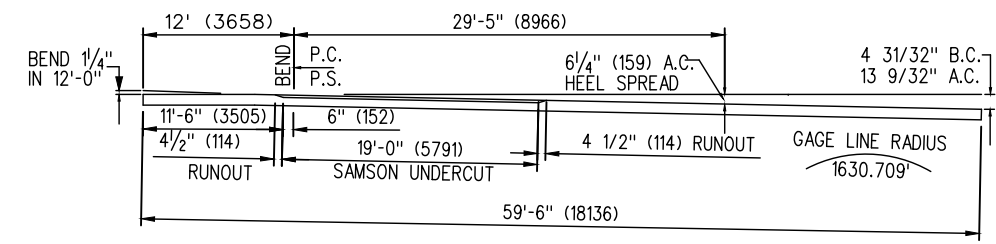
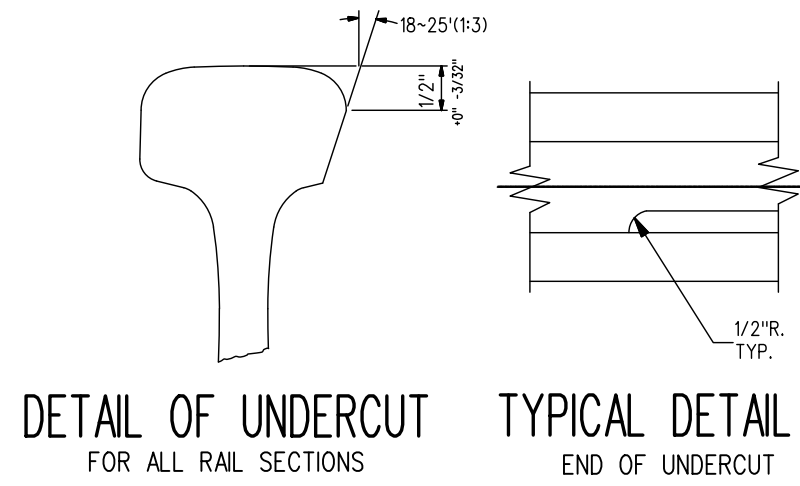
ALL WELDED TURNOUTS	DESCRIPTION	STOCK RAIL LENGTH	POINT RAIL LENGTH	TURNOUT	
				RIGHT HAND	LEFT HAND
	NO.10 115 LB. R.E.	39'-0"	31'-6"	1105J 109BB	109CC 1105N
	NO.10 136 LB. R.E.	39'-0"	31'-6"	1105K 1109DD	1109EE 1105O
	NO.12 115 LB. R.E.	39'-0"	36'-5"	1105L 109FF	1109GG 1105P
	NO.12 136 LB. R.E.	39'-0"	36'-7"	1105M 109HH	1109JJ 1105Q
	NO.16 136 LB. R.E.	78'-0"	38'-9"	1105R 1109KK	1109LL 1105T
	NO.20L 136 LB. R.E.	78'-0"	58'-10"	1105S 1109MM	1109NN 1105U
	NO.20E 136 LB. R.E.	78'-0"	63'-2"	1109PP 110900	



MAXIMUM VARIATION IN THE HORIZONTAL AND VERTICAL END SQUARENESS IS 0.030" WHEN COLD SAWED OR MILLED AND 0.063" WHEN HOT SAWED.

NOTES:

- UNDERCUT AND HEAT NUMBERS MUST BE ON SIMILAR SIDE (GAUGE SIDE).
- WHEN REFERRING TO STOCK RAILS, DRAWING NUMBER MUST BE STATED AS J,K,L,M,N,O,P,Q,R,S,T OR U TO INDICATE SPECIFIC STOCK RAIL REQUIRED.
- THE USE OF ACETYLENE TORCH OR OTHER BURNING METHOD FOR THE CUTTING OR MAKING OF HOLES IN THE RAIL IS ABSOLUTELY PROHIBITED. ALL HOLES MUST BE DRILLED.
- SPECIALS- FOR MAINTENANCE REPLACEMENT ONLY & NEW CONSTRUCTION SITES WHERE A 39 FOOT CANNOT BE INSTALLED, SPECIAL SHORT STOCK RAILS (30',33',36') MAY BE ORDERED. THESE SPECIALS WILL HAVE A 5 FOOT MINIMUM UNMACHINED LENGTH AT EACH END OF THE RAIL AND THE REMAINING PORTION OF THE RAIL WILL BE UNDERCUT.
- ORDERING- WHEN REQUISITIONING UNDERCUT STOCK RAILS, REFER TO THE M.R.S. CATALOGUE LISTING TO OBTAIN STOCK NUMBER FOR APPROPRIATE RAIL OR METALLURGY REQUIRED.



METRIC CONVERSION: 1 inch=25.4mm, 1 foot=304.8mm

1	18/07/27	ADDED IMPERIAL TO METRIC CONVERSION NOTE	
No.	Date	Revision	By Approved

Standard / **MACHINING UNDERCUT STOCK RAILS FOR ALL WELDED TURNOUTS**

Drawn RFP Checked GGS Approved VP Engineering & Asset Management



Date SEPT 15/2017 Plan Number GTS-1105 Rev 1