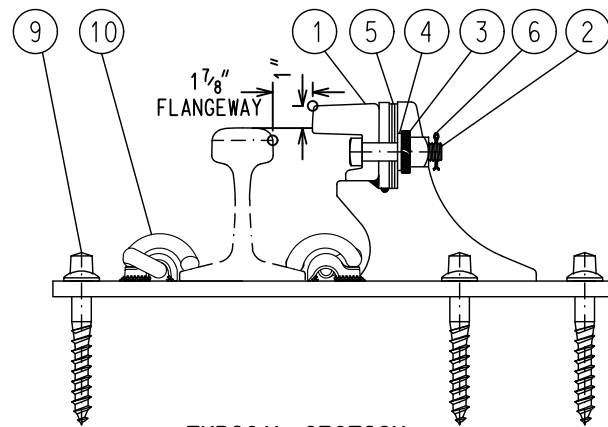
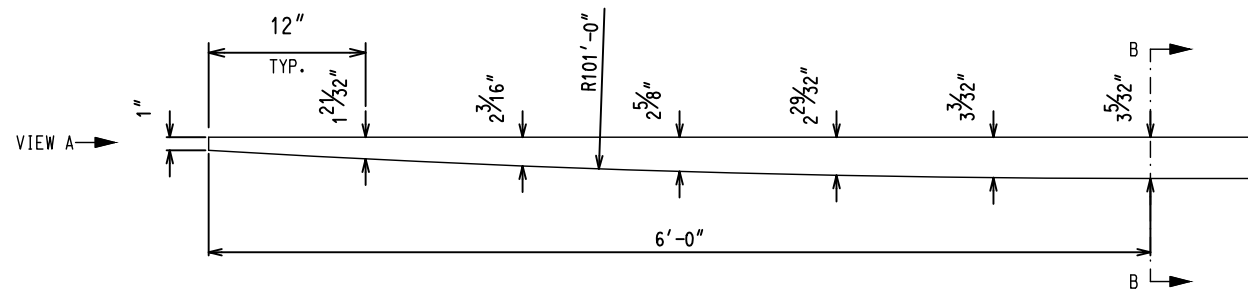


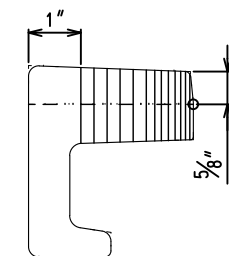
TYPICAL GUARD RAIL ASSEMBLY
(NO. 12 LEFT SIDE FOR RIGHT HAND TURNOUT TS1122-0 SHOWN)



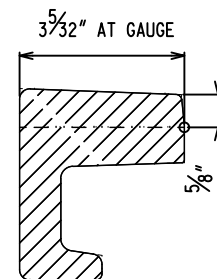
TYPICAL SECTION



FLARE MACHINING DETAIL



VIEW "A"



SECTION B-B

NOTES

WHEN REFERRING TO GUARD RAILS, PLAN AND TURNOUT NUMBER MUST BE STATED TO INDICATE SPECIFIC GUARD RAIL REQUIRED:

- A.- NO.8 GUARD RAIL ASSY. - LEFT SIDE FOR LEFT HAND TURNOUT
- B.- NO.8 GUARD RAIL ASSY. - RIGHT SIDE FOR LEFT HAND TURNOUT
- C.- NO.10 GUARD RAIL ASSY. - LEFT SIDE FOR LEFT HAND TURNOUT
- D.- NO.10 GUARD RAIL ASSY. - RIGHT SIDE FOR LEFT HAND TURNOUT
- E.- NO.12 GUARD RAIL ASSY. - LEFT SIDE FOR LEFT HAND TURNOUT
- F.- NO.12 GUARD RAIL ASSY. - RIGHT SIDE FOR LEFT HAND TURNOUT
- G.- NO.16 GUARD RAIL ASSY. - LEFT SIDE FOR LEFT HAND TURNOUT
- H.- NO.16 GUARD RAIL ASSY. - RIGHT SIDE FOR LEFT HAND TURNOUT
- I.- NO.20L GUARD RAIL ASSY. - LEFT SIDE FOR LEFT HAND TURNOUT
- J.- NO.20L GUARD RAIL ASSY. - RIGHT SIDE FOR LEFT HAND TURNOUT
- K.- NO.8 GUARD RAIL ASSY. - LEFT SIDE FOR RIGHT HAND TURNOUT
- L.- NO.8 GUARD RAIL ASSY. - RIGHT SIDE FOR RIGHT HAND TURNOUT
- M.- NO.10 GUARD RAIL ASSY. - LEFT SIDE FOR RIGHT HAND TURNOUT
- N.- NO.10 GUARD RAIL ASSY. - RIGHT SIDE FOR RIGHT HAND TURNOUT
- O.- NO.12 GUARD RAIL ASSY. - LEFT SIDE FOR RIGHT HAND TURNOUT
- P.- NO.12 GUARD RAIL ASSY. - RIGHT SIDE FOR RIGHT HAND TURNOUT
- Q.- NO.16 GUARD RAIL ASSY. - LEFT SIDE FOR RIGHT HAND TURNOUT
- R.- NO.16 GUARD RAIL ASSY. - RIGHT SIDE FOR RIGHT HAND TURNOUT
- S.- NO.20L GUARD RAIL ASSY. - LEFT SIDE FOR RIGHT HAND TURNOUT
- T.- NO.20L GUARD RAIL ASSY. - RIGHT SIDE FOR RIGHT HAND TURNOUT
- U.- NO.20E GUARD RAIL ASSY. - LEFT SIDE FOR EQUILATERAL TURNOUT
- V.- NO.20E GUARD RAIL ASSY. - RIGHT SIDE FOR EQUILATERAL TURNOUT
- W.- GUARD RAIL ASSY. - FOR ADVANCE GUARD RAILS (EITHER SIDE)
- X.- NO.16E GUARD RAIL ASSY. - LEFT SIDE FOR EQUILATERAL TURNOUT
- Y.- NO.16E GUARD RAIL ASSY. - RIGHT SIDE FOR EQUILATERAL TURNOUT

2. ALL BOLTED GUARD RAIL ASSEMBLIES HAVE BEEN REPLACED WITH THE BOLTLESS ASSEMBLIES SHOWN ON GTS-1123. (REPLACEMENT COMPONENTS FOR EXISTING BOLTED TURNOUTS ARE LISTED IN THE BILL OF MATERIALS ON SHEET 2.

METRIC CONVERSION: 1 inch=25.4mm, 1 foot=304.8mm

No.	Date	Revision	By Approved
1	18/07/27	ADDED IMPERIAL TO METRIC CONVERSION NOTE	

Standard / **GUARD RAIL ASSEMBLY FOR 136 LB. TURNOUTS**

Drawn MG Checked RLB Approved *[Signature]*
VP Engineering & Asset Management



Date SEPT 15/2017 Plan Number GTS-1122 Rev 1