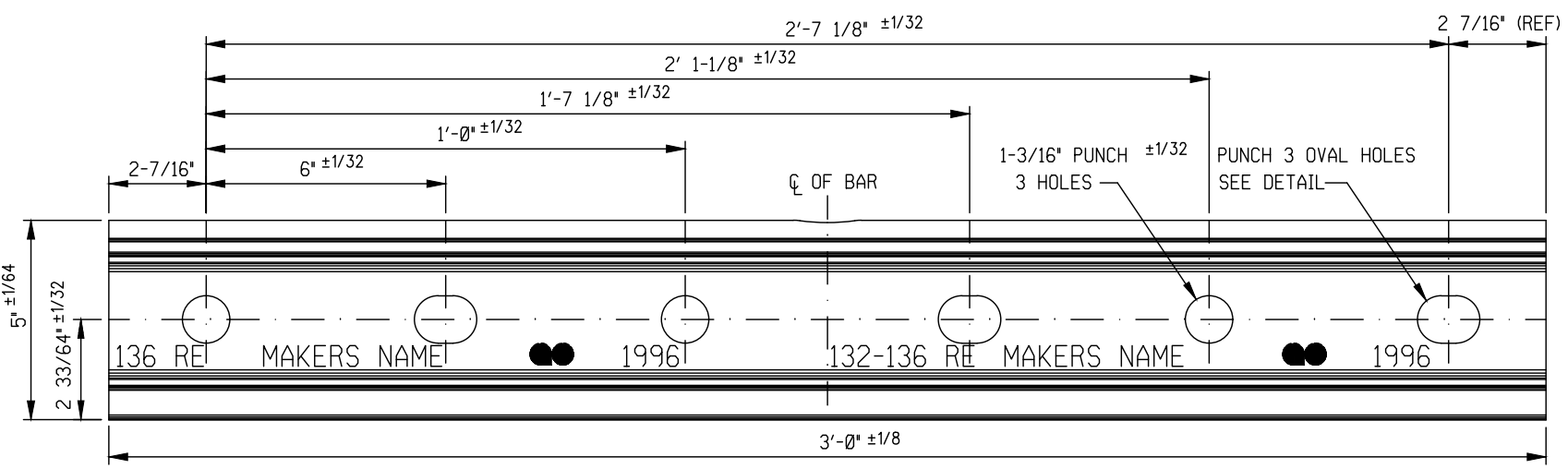
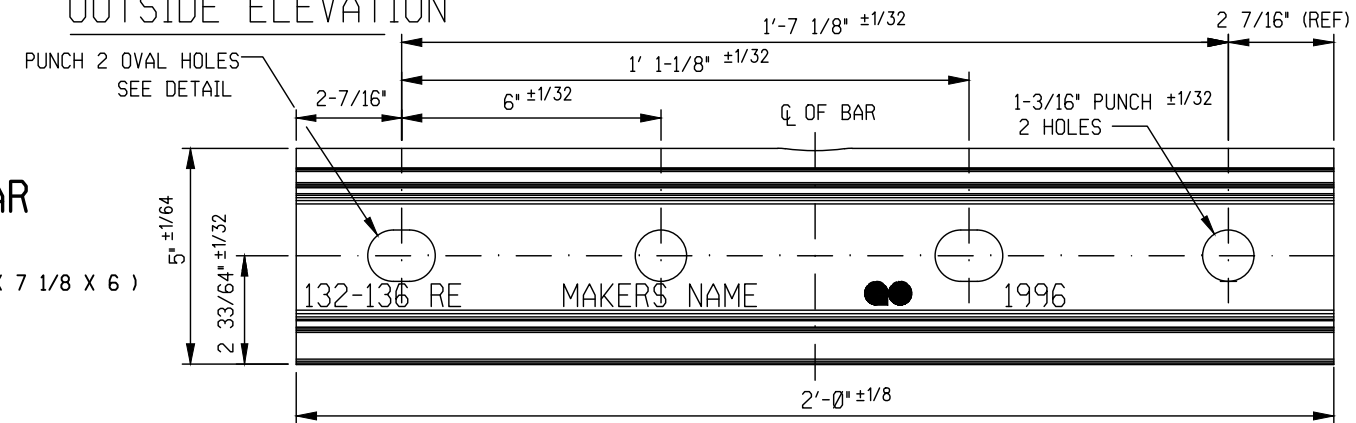


6 HOLE BAR
 (ISSUED AS PAIR)
 (HOLE SPACING 6 X 6 X
 7 1/8 X 6 X 6)



OUTSIDE ELEVATION

4 HOLE BAR
 (ISSUED AS PAIR)
 (HOLE SPACING 6 X 7 1/8 X 6)



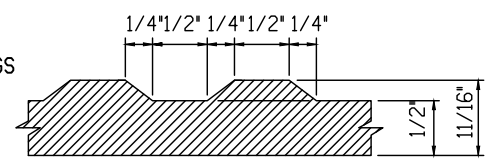
OUTSIDE ELEVATION

NOTES:

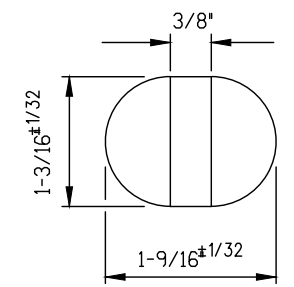
- ALTERNATE OVAL AND ROUND BOLT HOLES SHALL BE PUNCHED IN THE ORDER SHOWN.
- BOLT HOLES SHALL BE PUNCHED FROM THE INSIDE OF SPLICE BAR.
- THE USE OF ACETYLENE TORCH OR OTHER BURNING METHOD FOR THE CUTTING OR MAKING OF HOLES IN THE MANUFACTURE OF SPLICE BARS IS ABSOLUTELY PROHIBITED.
- 3/8" MIN. IDENTIFICATION MARK SHALL BE ROLLED IN RAISED CHARACTERS (1/32" MIN.) ON THE OUTSIDE OF THE BARS.
- EACH FINISHED SPLICE BAR MUST HAVE A TOTAL MARKING SHOWN.

TOLERANCE NOTE:
 THE SPLICE BARS MUST FIT PERFECTLY WITH THE HEAD, BASE, AND DRILLINGS OF SAMPLE RAIL ENDS WHICH WILL BE SUPPLIED BY THE RAILWAY COMPANY AT THE MANUFACTURER'S REQUEST.

END VIEW



SECTION A-A

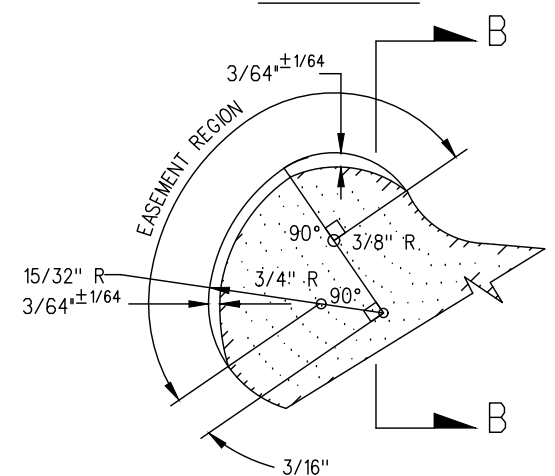


OVAL HOLE DETAIL

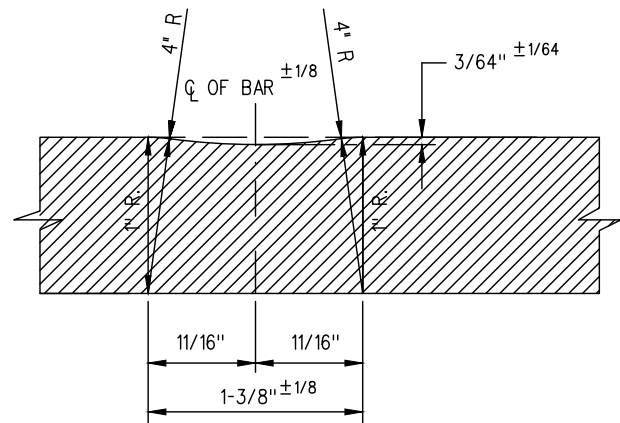
DIMENSIONS AT INSIDE FACE

PHYSICAL PROPERTIES OF ONE BAR			
GROSS AREA:	MAXIMUM	5.59	IN ²
	MINIMUM	5.12	IN ²
	AVERAGE	5.355	IN ²
MOMENT OF INERTIA		13.726	IN ⁴
SECTION MODULUS:	TOP	5.48	IN ³
	BOTTOM	5.46	IN ³
NEUTRAL AXIS:	FROM TOP	2.507	IN
	FROM BOTTOM	2.516	IN
NET WEIGHT OF 6 HOLE BAR		53.27	LBS
NET WEIGHT OF 4 HOLE BAR		35.51	LBS

MATERIAL: SPLICE BARS SHALL BE MADE OF BASIC OPEN-HEARTH OR BASIC OXYGEN CARBON STEEL



HEAD EASEMENT DETAIL



SECTION B-B

METRIC CONVERSION: 1 inch=25.4mm, 1 foot=304.8mm

No.	Date	Revision	By Approved
1	18/07/27	ADDED IMPERIAL TO METRIC CONVERSION NOTE	

Standard / **HEAD FREE RAIL SPLICE BAR FOR 132 & 136 LB. R.E. RAILS**

Drawn MG Checked GGS Approved *[Signature]*
 VP Engineering & Asset Management



Date SEPT 15/2017 Plan Number GTS-1203 Rev 1