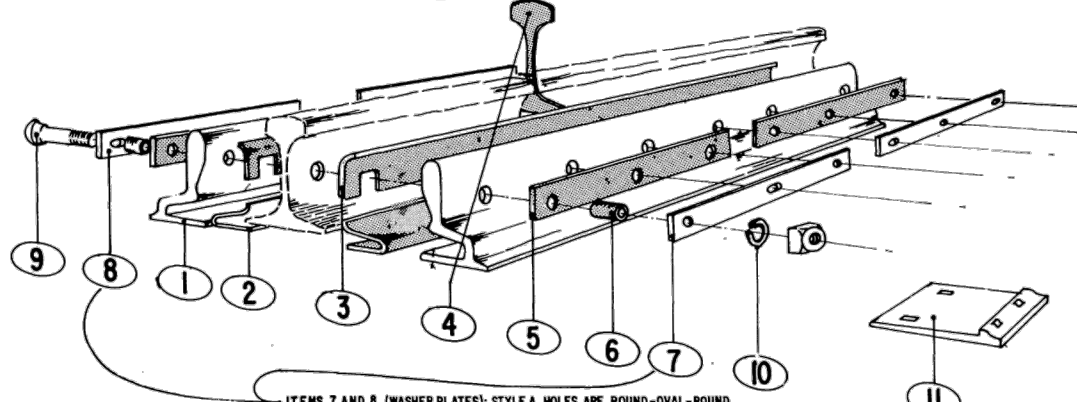


STOCK NUMBER	ITEM NO	DESCRIPTION	PLAN NUMBER	QTY.
NEW	P.W.			
	1	CONTINUOUS JOINT BAR (80025)		2
	2	BASE PIECE-FIBRE		2
	3	HEAD PIECE-FIBRE		2
	4	END POST-FIBRE		1
	5	WASHER PLATE-FIBRE		4
	6	BUSHING-FIBRE		8
	7 & 8	WASHER PLATE-STEEL		4
	9	1" DIA OVAL NECK TRACK BOLT X 6-3/8" C/W SQ. NUT	GTS-1319/3	4
	10	SPRING WASHER FOR 1" DIA. BOLT	GTS-1301	4
	11	ABRASION PLATE	GTS-0502	2

100*ARA-A RAIL
(4 HOLE)



ITEMS 7 AND 8 (WASHER PLATES): STYLE A HOLES ARE ROUND-OVAL-ROUND
STYLE B HOLES ARE OVAL-ROUND-OVAL
(ITEMS 7 AND 8 SIMILAR ON FOUR HOLE JOINTS)

ABRASION PLATES ARE NOT INCLUDED IN JOINT KIT AND MUST BE REQUESTED.
ABRASION PLATES ARE NOT REQUIRED WHEN INSULATED JOINT IS INSTALLED ON SWITCH TIES IN TURNOUT.

STOCK NUMBER	ITEM NO	DESCRIPTION	PLAN NUMBER	QTY.
NEW	P.W.			
	1	CONTINUOUS JOINT BAR (80025)		2
	2	BASE PIECE-FIBRE		2
	3	HEAD PIECE-FIBRE		2
	4	END POST-FIBRE		1
	5	WASHER PLATE-FIBRE		4
	6	BUSHING-FIBRE		12
	7	WASHER PLATE-STEEL (STYLE A)		2
	8	WASHER PLATE-STEEL (STYLE B)		2
	9	1" DIA OVAL NECK TRACK BOLT X 6-3/8" LG. C/W SQ. NUT	GTS-1319/3	6
	10	SPRING WASHER FOR 1" DIA BOLT	GTS-1301	6
	11	ABRASION PLATE	GTS-0502	2

100*ARA-A RAIL
(6 HOLE)

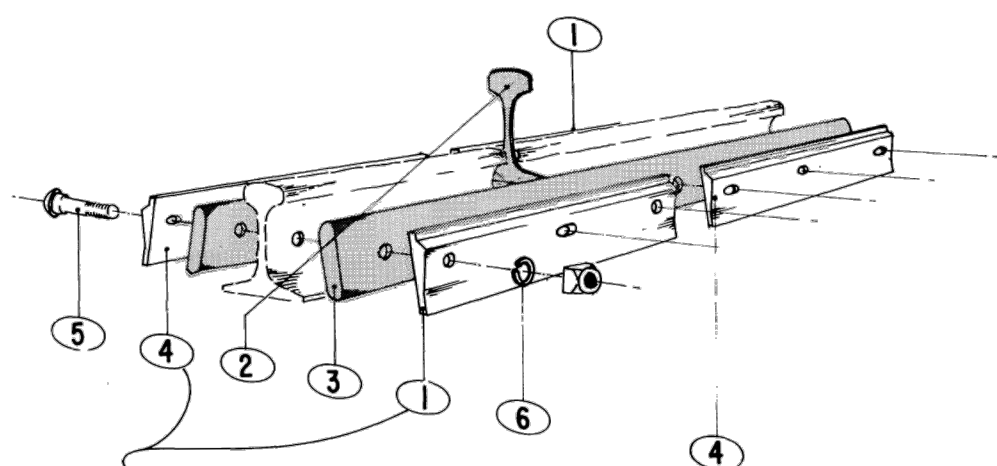
STOCK NUMBER	ITEM NO	DESCRIPTION	PLAN NUMBER	QTY.
NEW	P.W.			
	1	CONTINUOUS JOINT BAR (94501)		2
	2	BASE PIECE-FIBRE		2
	3	HEAD PIECE-FIBRE		1
	4	END POST-FIBRE		4
	5	WASHER PLATE-FIBRE		12
	6	BUSHING-FIBRE		2
	7	WASHER PLATE-STEEL (STYLE A)		2
	8	WASHER PLATE-STEEL (STYLE B)		2
	9	1" DIA OVAL NECK TRACK BOLT X 7" LG. C/W SQ. NUT	GTS-1319/4	6
	10	SPRING WASHER FOR 1" DIA. BOLT	GTS-1301	6
	11	ABRASION PLATE	GTS-0502	2

115*RE RAIL

STOCK NUMBER	ITEM NO	DESCRIPTION	PLAN NUMBER	QTY.
NEW	P.W.			
	1	CONTINUOUS JOINT BAR (94511)		2
	2	BASE PIECE-FIBRE		2
	3	HEAD PIECE-FIBRE		2
	4	END POST-FIBRE		1
	5	WASHER PLATE-FIBRE		4
	6	BUSHING-FIBRE		12
	7	WASHER PLATE-STEEL (STYLE A)		2
	8	WASHER PLATE-STEEL (STYLE B)		2
	9	1 1/8" DIA OVAL NECK TRACK BOLT X 7" LG. C/W SQ. NUT	GTS-1320/9	6
	10	SPRING WASHER FOR 1-1/8" DIA. BOLT	GTS-1301	6
	11	ABRASION PLATE	GTS-0502	2

132*RE RAIL

TYPICAL CONTINUOUS INSULATED JOINT ASSEMBLY



ITEMS 1 AND 4 (BACK-UP PLATES): STYLE A HOLES ARE ROUND-OVAL-ROUND
STYLE B HOLES ARE OVAL-ROUND-OVAL

STOCK NUMBER	ITEM NO	DESCRIPTION	"3M PLAN NO."	PLAN NUMBER	QTY.
NEW	P.W.				
	1	BACK UP PLATE-STEEL (STYLE A)	B-1377-2574		2
	2	END POST-PLASTIC	B-1377-1796		1
	3	INSULATOR BAR-PLASTIC	B-1377-2382		2
	4	BACK UP PLATE-STEEL (STYLE B)	B-1377-2573		2
	5	1" DIA OVAL NECK TRACK BOLT X 7" LG. C/W SQ. NUT	GTS-1319/4		6
	6	SPRING WASHER FOR 1" DIA. BOLT	GTS-1301		6

100*ARA-A RAIL

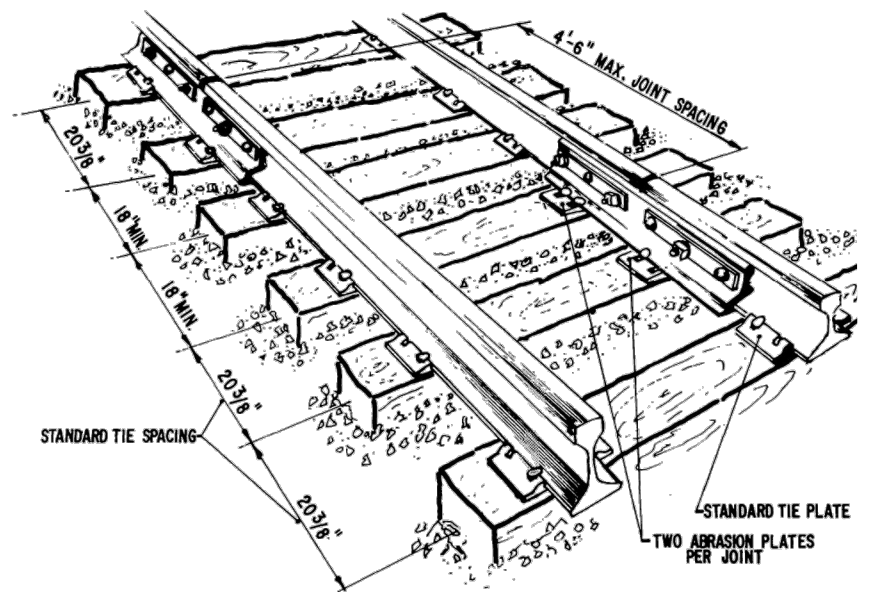
STOCK NUMBER	ITEM NO	DESCRIPTION	"3M PLAN NO."	PLAN NUMBER	QTY.
NEW	P.W.				
	1	BACK UP PLATE-STEEL (STYLE A)	12-1377-0981-7		2
	2	END POST-PLASTIC	A 1377-645		1
	3	INSULATOR BAR-PLASTIC	B 1377-1151		2
	4	BACK UP PLATE-STEEL (STYLE B)	12-1377-0982-5		2
	5	1" DIA OVAL NECK TRACK BOLT X 7" LG. C/W SQ. NUT	GTS-1319/4		6
	6	SPRING WASHER FOR 1" DIA. BOLT	GTS-1301		6

115*RE RAIL

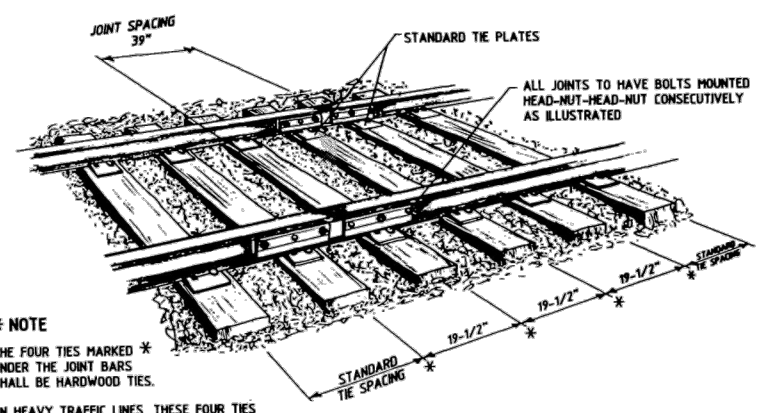
STOCK NUMBER	ITEM NO	DESCRIPTION	"3M PLAN NO."	PLAN NUMBER	QTY.
NEW	P.W.				
	1	BACK UP PLATE-STEEL (STYLE A)	12-1377-0941-1		2
	2	END POST-PLASTIC	A 1377-646		1
	3	INSULATOR BAR-PLASTIC	B 1377-750		2
	4	BACK UP PLATE-STEEL (STYLE B)	12-1377-0942-9		2
	5	1-1/8" OVAL NECK TRACK BOLT X 7-1/2" LG. C/W SQ. NUT	GTS-1320/10		6
	6	SPRING WASHER FOR 1-1/8" DIA. BOLT	GTS-1301		6

132*RE RAIL

NON CONTINUOUS INSULATED JOINT ASSEMBLY



TIE SPACING CONTINUOUS INSULATED JOINT
(END POST BETWEEN TIES)



* NOTE

THE FOUR TIES MARKED * UNDER THE JOINT BARS SHALL BE HARDWOOD TIES.

ON HEAVY TRAFFIC LINES, THESE FOUR TIES MAY BE 9'-0" LONG WHERE AUTHORIZED BY RAIL CORRIDORS SENIOR MANAGER OF TRACK AND STRUCTURES

TIE SPACING NON-CONTINUOUS INSULATED JOINT
(END POST BETWEEN TIES)

NOTES

1. THE ABOVE TIE SPACING SIMILAR FOR 4 AND 6 HOLE BARS.
2. INSULATED RAIL JOINTS TO BE INSTALLED IN ACCORDANCE WITH RM NO. 3602, LATEST ISSUE.

METRIC CONVERSION: 1 inch=25.4mm, 1 foot=304.8mm

1	18/07/27	ADDED IMPERIAL TO METRIC CONVERSION NOTE
No.	Date	Revision
		By Approved
Standard / CONTINUOUS & NON CONTINUOUS INSULATED RAIL JOINTS JOINT ASSEMBLY - TIE SPACING		
Drawn	MG	Checked GGS
		Approved <i>[Signature]</i>
VP Engineering & Asset Management		



METROLINX

Date DEC 15, 2017 Plan Number GTS-1205 Rev 1

REFERENCE: TS-1205 Sheet 1 OF 1