

NOTES:

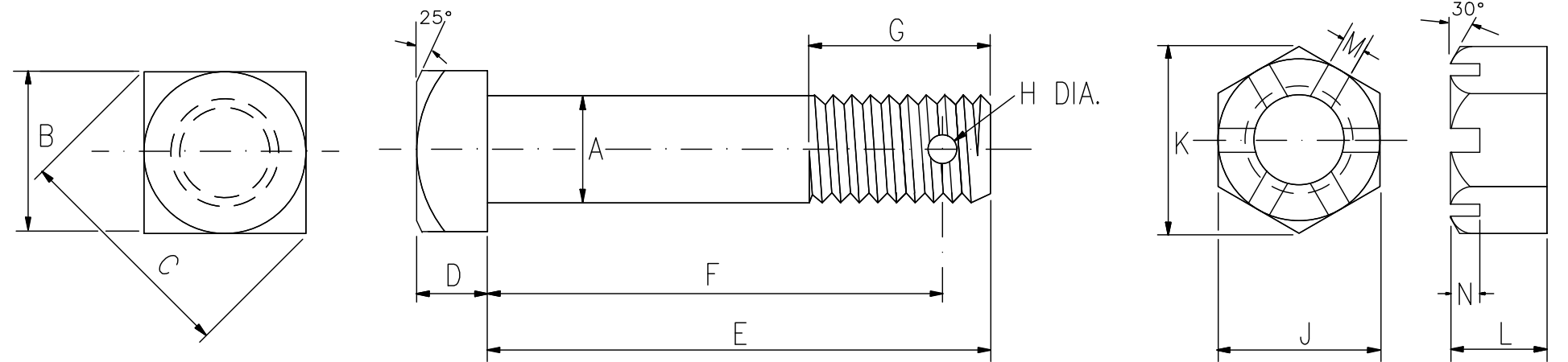
- ALL DIMENSIONS ARE IN INCHES.
- STANDARD BOLT AND NUT DIMENSIONS OBTAINED FROM CANADIAN STANDARDS ASSOCIATION.
- ✓ - INDICATES A "SPECIAL" NON-STANDARD DIMENSION.
- BOLTS AND NUTS ARE TO BE MANUFACTURED AS DIMENSIONED AND IN ACCORDANCE WITH THE CORRESPONDING SPECIFICATION:

| ITEM NO. | NOMINAL SIZE | BODY DIAMETER | | WIDTH ACROSS FLATS | | WIDTH ACROSS CORNERS | | HEIGHT OF HEAD UNFINISHED | | LENGTH OF BOLT | HOLE POSITION | | LENGTH OF THREAD | THDS. INCH | HOLE DIA. | WIDTH ACROSS FLATS | | | WIDTH ACROSS CORNERS | | THICKNESS OF NUT | | | SLOT WIDTH | SLOT DEPTH | SPEC. KEY NO. | | |
|----------|--------------|---------------|-------|--------------------|-------|----------------------|-------|---------------------------|-------|----------------|---------------|------------|------------------|------------|-------------|--------------------|-------|-------|----------------------|-------|------------------|-------|-------|------------|------------|---------------|------|---|
| | | MAX. | MIN. | NOM. | MAX. | MIN. | MAX. | MIN. | NOM. | | MAX. | MIN. | | | | MAX. | MIN. | MAX. | MIN. | MAX. | MIN. | NOM. | MAX. | | | | MIN. | |
| | | | | | | | | | | | | | | | | | | | | | | | | | | | | |
| 1 | 3/4 | 0.768 | 0.737 | 1-1/8 | 1.125 | 1.088 | 1.591 | 1.494 | 3/8✓ | 0.395 | 0.355 | 5 ±1/8 | 4.644 | 4.594 | 1-3/4 +1/4 | 10 | 0.199 | 1-1/4 | 1.250 | 1.212 | 1.443 | 1.382 | 47/64 | 0.758 | 0.710 | 3/16 | 7/32 | 1 |
| 2 | 3/4 | 0.768 | 0.737 | 1-1/8 | 1.125 | 1.088 | 1.591 | 1.494 | 3/8✓ | 0.395 | 0.355 | 6 ±1/8 | 5.519 | 5.469 | 1-3/4 +1/4 | 10 | 0.199 | 1-1/4 | 1.250 | 1.212 | 1.443 | 1.382 | 47/64 | 0.758 | 0.710 | 3/16 | 7/32 | 1 |
| 3 | 3/4 | 0.768 | 0.737 | 1-1/8 | 1.125 | 1.088 | 1.591 | 1.494 | 1/2 | 0.524 | 0.476 | 3-1/4 ±1/8 | 2.935 | 2.873 | 1-3/4 +1/4 | 10 | 0.199 | 1-1/4 | 1.250 | 1.212 | 1.443 | 1.382 | 47/64 | 0.758 | 0.710 | 3/16 | 7/32 | 1 |
| 4 | 3/4 | 0.768 | 0.737 | 1-1/8 | 1.125 | 1.088 | 1.591 | 1.494 | 3/8✓ | 0.395 | 0.355 | 5-3/4 ±1/8 | 5.290 | 5.240 | 1-3/4 +1/4 | 10 | 0.199 | 1-1/4 | 1.250 | 1.212 | 1.443 | 1.382 | 47/64 | 0.758 | 0.710 | 3/16 | 7/32 | 1 |
| 5 | | | | | | | | | | | | | | | | | | | | | | | | | | | | |
| 6 | 1 | 1.022 | 0.986 | 1-1/2 | 1.500 | 1.450 | 2.121 | 1.991 | 21/32 | 0.684 | 0.628 | 4-1/4 ±1/8 | 3.751 | 3.688 | 2-1/4 +5/16 | 8 | 1/4 | 1-5/8 | 1.625 | 1.575 | 1.876 | 1.796 | 63/64 | 1.012 | 0.956 | 1/4 | 9/32 | 1 |
| 7 | 1 | 1.022 | 0.986 | 1-1/2 | 1.500 | 1.450 | 2.121 | 1.991 | 3/8✓ | 0.395 | 0.355 | 5-1/2 ±1/8 | 5.063 | 5.000 | 2-1/4 +5/16 | 8 | 1/4 | 1-5/8 | 1.625 | 1.575 | 1.876 | 1.796 | 63/64 | 1.012 | 0.956 | 1/4 | 9/32 | 1 |
| 8 | 1 | 1.022 | 0.986 | 1-1/2 | 1.500 | 1.450 | 2.121 | 1.991 | 3/8✓ | 0.395 | 0.355 | 6-1/4 ±1/8 | 5.813 | 5.750 | 2-1/2 +5/16 | 8 | 1/4 | 1-5/8 | 1.625 | 1.575 | 1.876 | 1.796 | 63/64 | 1.012 | 0.956 | 1/4 | 9/32 | 1 |
| 9 | 1 | 1.022 | 0.986 | 1-1/2 | 1.500 | 1.450 | 2.121 | 1.991 | 3/8✓ | 0.395 | 0.355 | 6-1/2 ±1/8 | 6.063 | 6.000 | 2-1/2 +5/16 | 8 | 1/4 | 1-5/8 | 1.625 | 1.575 | 1.876 | 1.796 | 63/64 | 1.012 | 0.956 | 1/4 | 9/32 | 1 |
| 10 | 1 | 1.022 | 0.986 | 1-1/2 | 1.500 | 1.450 | 2.121 | 1.991 | 21/32 | 0.684 | 0.628 | 3-3/4 ±1/8 | 3.313 | 3.250 | 2-1/4 +5/16 | 8 | 1/4 | 1-5/8 | 1.625 | 1.575 | 1.876 | 1.796 | 63/64 | 1.012 | 0.956 | 1/4 | 9/32 | 1 |
| 11 | 1 | 1.022 | 0.986 | 1-1/2 | 1.500 | 1.450 | 2.121 | 1.991 | 3/8✓ | 0.395 | 0.355 | 5-3/4 ±1/8 | 5.290 | 5.240 | 2-1/2 +5/16 | 8 | 1/4 | 1-5/8 | 1.625 | 1.575 | 1.876 | 1.796 | 63/64 | 1.012 | 0.956 | 1/4 | 9/32 | 1 |
| 12 | 1 | 1.022 | 0.986 | 1-1/2 | 1.500 | 1.450 | 2.121 | 1.991 | 21/32 | 0.684 | 0.628 | 4-3/4 ±1/8 | 4.419 | 4.357 | 2-1/4 +5/16 | 8 | 1/4 | 1-5/8 | 1.625 | 1.575 | 1.876 | 1.796 | 63/64 | 1.012 | 0.956 | 1/4 | 9/32 | 1 |
| 13 | | | | | | | | | | | | | | | | | | | | | | | | | | | | |
| 14 | | | | | | | | | | | | | | | | | | | | | | | | | | | | |
| 15 | | | | | | | | | | | | | | | | | | | | | | | | | | | | |

| SPEC. KEY NO. | SPEC. NO. | DATED | DESCRIPTION |
|---------------|-----------|-----------|--|
| 1 | 11-1C | FEB. '83- | HEAT TREATED CARBON STEEL BOLTS AND CARBON STEEL NUTS |
| 2 | 11-2B | FEB. '83- | NON HEAT TREATED BOLTS |
| 3 | 12-1C | FEB. '83- | HEAT TREATED CARBON STEEL TRACK BOLTS AND CARBON STEEL NUTS. |

NUMBER LEGEND

TRACK STANDARDS-DRAWING NUMBER.
 ITEM NUMBER
 (SPECIFIC BOLT SIZE REQUIRED).
 GTS-1306/8



SQUARE BOLT

SLOTTED HEXAGON NUT

METRIC CONVERSION: 1 inch=25.4mm, 1 foot=304.8mm

| No. | Date | Revision | By Approved |
|-----|----------|--|-------------|
| 1 | 18/07/27 | ADDED IMPERIAL TO METRIC CONVERSION NOTE | |

Standard / SQUARE BOLT / SLOTTED HEXAGON NUT AND DRILLED FOR COTTER PIN

Drawn **GEK** Checked **GWM** Approved VP Engineering & Asset Management



Date **SEPT 15/2017** Plan Number **GTS-1306** Rev **1**