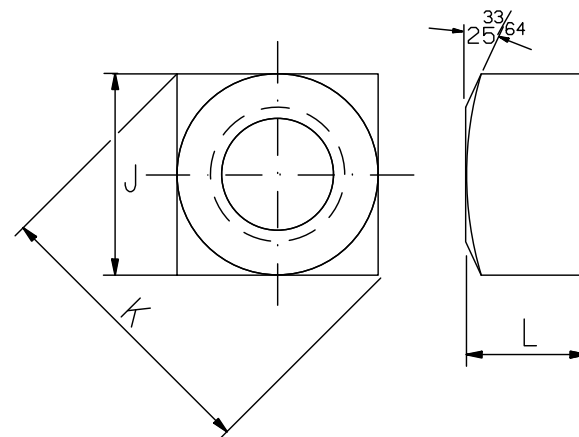


SQUARE NECK BOLT



SQUARE NUT

NOTES:

- ALL DIMENSIONS ARE IN INCHES.
- BOLTS AND NUTS ARE TO BE MANUFACTURED AS DIMENSIONED AND IN ACCORDANCE WITH THE CORRESPONDING SPECIFICATION:

SPEC. KEY NO.	SPEC. NO.	DATED	DESCRIPTION
1	11-1C	FEB. '83	HEAT TREATED CARBON STEEL BOLTS AND CARBON STEEL NUTS

ITEM NO.	NOMINAL SIZE	BODY DIAMETER		WIDTH ACROSS FLATS		WIDTH ACROSS CORNERS		HEIGHT OF HEAD UNFINISHED		LENGTH OF BOLT	SQUARE DEPTH		SQUARE WIDTH		LENGTH OF THREAD	THDS. INCH	WIDTH ACROSS FLATS			WIDTH ACROSS CORNERS		THICKNESS OF NUT			SPEC. KEY NO.			
		MAX.	MIN.	NOM.	MAX.	MIN.	MAX.	MIN.	NOM.		MAX.	MIN.	MAX.	MIN.			MAX.	MIN.	MAX.	MIN.	NOM.	MAX.	MIN.	MAX.		MIN.		
1	1	1.022	0.986	1-1/2	1.500	1.450	2.121	1.991	1/4	0.278	0.222	3-1/2 ±1/8	0.531	0.500	1.022	0.986	2	+5/16	8	1-5/8	1.625	1.575	2.298	2.162	1	1.028	0.956	1
2	1	1.022	0.986	1-1/2	1.500	1.450	2.121	1.991	1/4	0.278	0.222	4 ±1/8	0.531	0.500	1.022	0.986	2	+5/16	8	1-5/8	1.625	1.575	2.298	2.162	1	1.028	0.956	1
3	1	1.022	0.986	1-1/2	1.500	1.450	2.121	1.991	1/4	0.278	0.222	5 ±1/8	0.531	0.500	1.022	0.986	2	+5/16	8	1-5/8	1.625	1.575	2.298	2.162	1	1.028	0.956	1

NUMBER LEGEND

- TRACK STANDARDS-DRAWING NUMBER.
  - ITEM NUMBER (SPECIFIC BOLT SIZE REQUIRED).
- GTS-1307/3

METRIC CONVERSION: 1 inch=25.4mm, 1 foot=304.8mm

1	18/07/27	ADDED IMPERIAL TO METRIC CONVERSION NOTE
No.	Date	Revision
		By Approved

Standard / **CARRIAGE BOLT  
SQUARE HEAD & NECK, SQUARE NUT**

Drawn **GEK** Checked **GWM** Approved **[Signature]**  
VP Engineering & Asset Management



Date **SEPT 15/2017** Plan Number **GTS-1307** Rev **1**